

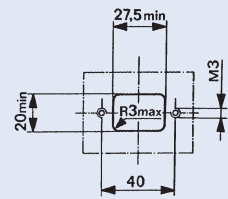
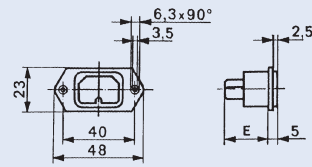
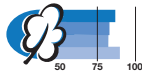
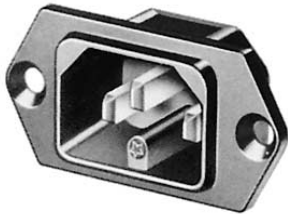
## APPLIANCE COUPLERS

Appliance inlets/-outlets

6110-3, 6110-4

### Appliance inlet Type 6110-3

Screw-on mounting  
from front or rear  
Solder terminals or quick  
connect terminals  
Pin temperature 120 °C  
Protection class I



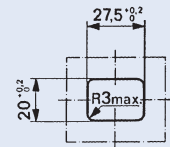
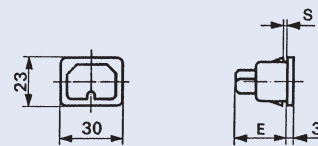
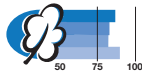
E: solder terminals  
E: quick connect terminals

20,5 mm  
23,5 mm

Mounting screw torque 0,5 Nm

### Appliance inlet Type 6110-4

Snap-in mounting from front  
Solder terminals or  
quick connect terminals  
Pin temperature 120 °C  
Protection class I



E: solder terminals  
E: quick connect terminals  
S: 1,0; 1,2; 1,5; 2,0; 2,5; 3,0 mm

22,5 mm  
25,5 mm

#### Technical data:

- Rated current/voltage:  
10 A/250 VAC
- Insulation resistance:  
> 10 MΩ (500 VDC, 1 Min.)
- Dielectric strength:  
2 kV (50 Hz, 1 Min.), to  
accessible surfaces
- Material:  
– Socket:  
thermoplastic, black,  
UL 94V-0

#### Standards

IEC/EN 60320-1/C16

#### Approvals

- SEV (10 A / 250 VAC)
- VDE (10 A / 250 VAC)
- SEMKO (10 A / 250 VAC)
- UL (15 A / 250 VAC)
- CSA (15 A / 250 VAC)

#### Order Numbers

Screw-on mounting	Snap-in mounting	Terminals
6110.3100	6110.41XX	Solder terminals 3,5 x 0,8 mm
6110.3200	6110.42XX	Quick connect terminals 4,8 x 0,8 mm
6110.3300	6110.43XX	Quick connect terminals 6,3 x 0,8 mm
Rivet mount types available on request Therefore change the fifth digit in the order number from a "3" to a "9" (e.g. 6110.9300)	"XX" panel thickness (s) in 1/10 mm 10, 12, 15, 20, 25, 30 e.g. 6110.4330 for 3,0 mm	

Additional types on request

Cord retaining clamp see page 171