

# HT Series



UL Recognized  
CSA Certified  
VDE Approved



## HT Series

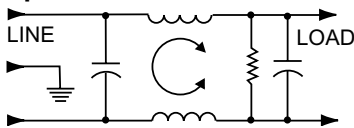
The HT series power line filters provide superior common-mode and premium differential-mode attenuation to RFI noise on the frequency range from 10kHz to 30MHz, for IEC 60601 and UL2601 patient-connected equipment, as well as all other electronic equipment that cannot tolerate leakage current.

They are a size- and cost-effective solution to the problem of meeting both medical leakage current limits and conducted emissions limits in equipment with high noise sources (such as switching power supplies). HT series filters can meet the following Conducted Emissions standards:

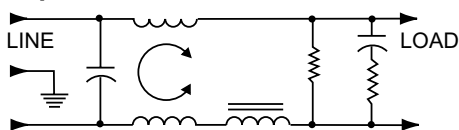
- European Normalized Standards based on EN55022, Level A (in many cases, Level B also).
- FCC Part 15, Computing Devices, Class B.
- FCC Part 18, ISM Equipment, Industrial and Consumer.

## Electrical Schematics

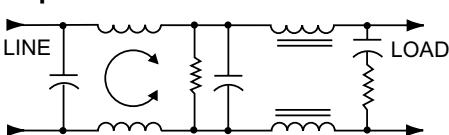
### 6 Amp



### 10 Amp



### 15 Amp



## Specifications

**Maximum leakage current, each line-to-ground**  
 @ 120 VAC 60 Hz: 2µA  
 @ 250 VAC 50 Hz: 5µA

**Hipot rating (one minute):**  
 line-to-ground: 1500 VAC  
 line-to-line: 1450 VDC

**Operating frequency:** 50/60 Hz

**Rated voltage (max.):** 250 VAC

**Rated current:**  
 6EHT: 6A  
 10EHT: 10A  
 15EHT: 15A

### Minimum insertion loss in dB:

Line-to-ground in 50 ohm circuit

Current Rating	Frequency-MHz											
	.01	.02	.05	.08	.15	.5	1	2	5	10	20	30
6A	16	23	32	41	46	41	33	26	15	9	6	2
10A	9	15	24	30	36	42	34	22	11	12	8	8
15A	4	9	18	22	27	41	34	22	12	12	5	2

Line-to-line in 50 ohm circuit

Current Rating	Frequency-MHz											
	.01	.02	.05	.08	.15	.5	1	2	5	10	20	30
6A	4	1	14	45	51	70	70	65	55	47	37	37
10A	7	8	17	32	52	70	70	70	65	55	40	35
15A	12	16	15	10	51	70	70	70	70	70	65	55

## Line Cord

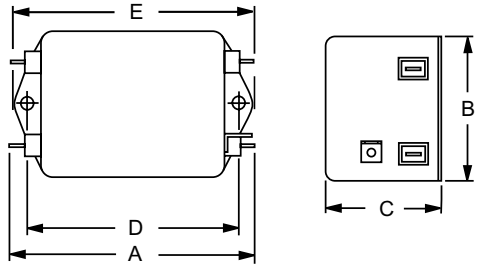
Line Cord No. GA400:

7 1/2 foot, 3-conductor line cord to mate with T7 models.

# HT Series

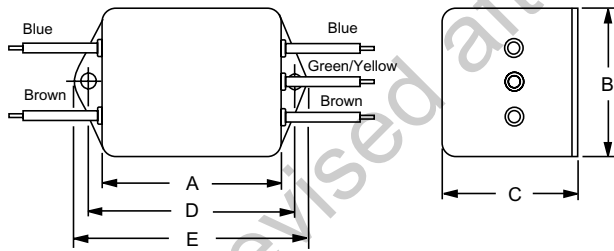
## Case Styles

### HT1 (6 and 10 Amp)



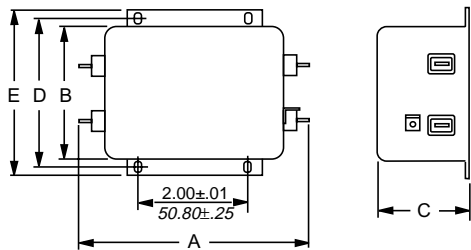
Typical dimensions:  
 Terminals: .250 [6.35] (5) Holes: .07 [1.8] Dia.(4) Slot: .07 x .16 [1.8 x 4.1]  
 Mounting holes: .188 [4.78] Dia. (2)

### HT3

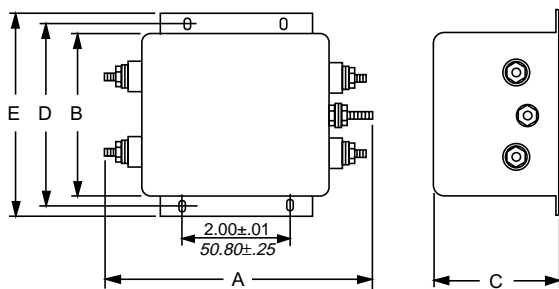


Typical dimensions:  
 Wire leads: 4.0 [101.6] Min. Mounting holes: .188 [4.78] Dia. (2)

### HT1 (15 Amp)

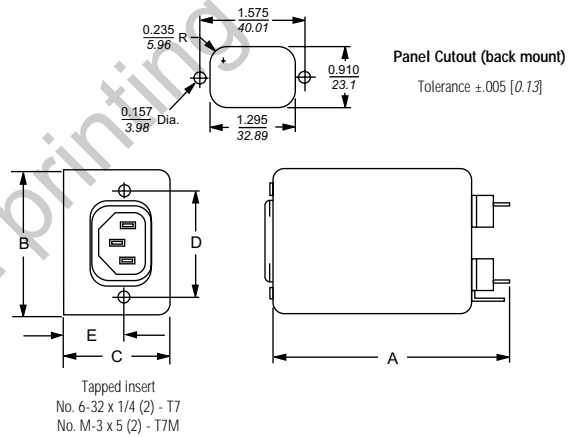


### HT6



Typical dimensions:  
 Terminals: No. 8-32 (5) Mounting holes: .203 x .156 [5.16 x 3.96] Dia. (4)  
 Torque: 18±2 in.lb

### HT7 & HT7M (with metric insert)



## Case Dimensions

Part No.	A (max)	B (max)	C (max)	D $\frac{+.015}{-.38}$	E (max)
6EHT1	<b>3.56</b> 90.4	<b>2.15</b> 54.6	<b>1.81</b> 46.0	<b>2.938</b> 74.63	<b>3.38</b> 85.9
6EHT3	<b>2.55</b> 64.8	<b>2.15</b> 54.6	<b>1.81</b> 46.0	<b>2.938</b> 74.63	<b>3.38</b> 85.9
6EHT7, 6EHT7M	<b>3.52</b> 89.4	<b>2.25</b> 57.2	<b>1.78</b> 45.2	<b>1.575</b> 40.01	<b>0.63</b> 16.0 †
10EHT1	<b>4.69</b> 119.1	<b>2.27</b> 57.7	<b>1.8</b> 45.7	<b>4.063</b> 103.2	<b>4.47</b> 113.5
10EHT3	<b>3.69</b> 93.7	<b>2.27</b> 57.7	<b>1.8</b> 45.7	<b>4.063</b> 103.2	<b>4.47</b> 113.5
15EHT1	<b>5.45</b> 138.4	<b>3.12</b> 79.2	<b>2.18</b> 55.4	<b>3.5</b> 88.9	<b>3.96</b> 100.6
15EHT6	<b>5.95</b> 151.1	<b>3.12</b> 79.2	<b>2.18</b> 55.4	<b>3.5</b> 88.9	<b>3.96</b> 100.6

† ±.02 [±.5]

## Part Numbers

6EHT1	10EHT1
6EHT3	10EHT3
6EHT7	15EHT1
6EHT7M	15EHT6
Line Cord No.	GA400