

# N Series



UL Recognized  
CSA Certified  
VDE Approved



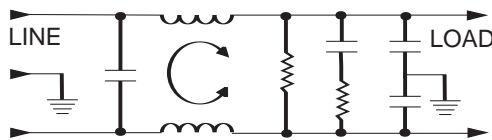
## N Series

The N series RFI filters are designed to provide superior common-mode and differential-mode attenuation for most digital electronic equipment (particularly switching power supplies) over the frequency range of 10kHz to 30MHz.

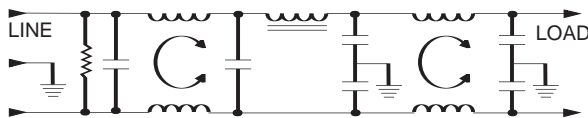
These filters are a cost-effective solution for very noisy equipment that must meet the conducted emission limits of the very stringent EN55022 Level B requirements, as well as FCC Part 15J, Class B.

## Electrical Schematics

### 6VN1 Model



### 10VN1 Model



Resistor location for reference only.

## Specifications

<b>Maximum leakage current, each line-to-ground</b>	
@ 120 VAC 60 Hz:	1.2mA
@ 250 VAC 50 Hz:	2.0mA
<b>Hipot rating (one minute):</b>	
line-to-ground	2250 VDC
line-to-line	1450 VDC
<b>Operating frequency:</b>	50/60 Hz
<b>Rated voltage (max.):</b>	250 VAC
<b>Rated current:</b>	
6VN1	6A
10VN1	10A

### Minimum insertion loss in dB:

Line-to-ground in 50 ohm circuit

Current Rating	Frequency-MHz								
	.01	.05	.1	.15	.5	1	5	10	30
<b>6VN1</b>	6	20	28	34	58	54	53	53	43
<b>10VN1</b>	8	8	44	55	75	70	70	70	55

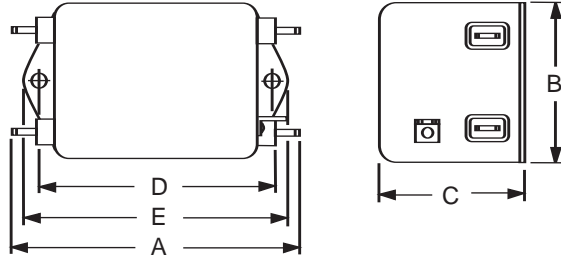
Line-to-line in 50 ohm circuit

Current Rating	Frequency-MHz								
	.01	.05	.1	.15	.5	1	5	10	30
<b>6VN1</b>	6	14	41	52	66	77	72	60	60
<b>10VN1</b>	6	6	35	45	72	70	72	75	70

# N Series

## Case Style

### 6VN1 & 10VN1



Typical dimensions:

Terminals: .250 [6.35] (5)      Holes: .07 [1.8] Dia.(4)  
 Mounting Holes: .188 [4.78] Dia. (2)      Slot: .07 x .16 [1.8 x 4.1]

## Case Dimensions

Part No.	A (max)	B (max)	C (max)	D $\frac{\pm .015}{\pm .38}$	E (max)
6VN1	<b>3.56</b> 90.4	<b>2.15</b> 54.6	<b>1.81</b> 45.9	<b>2.938</b> 74.63	<b>3.38</b> 85.8
10VN1	<b>4.69</b> 119.1	<b>2.27</b> 57.7	<b>1.8</b> 45.7	<b>4.063</b> 103.2	<b>4.47</b> 113.5

## Part Numbers

6VN1	10VN1
------	-------