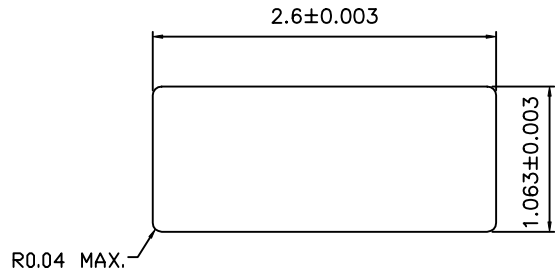
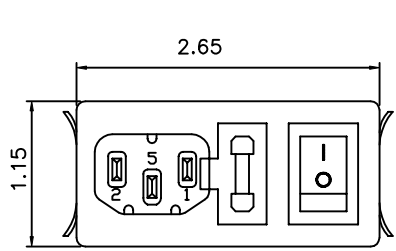
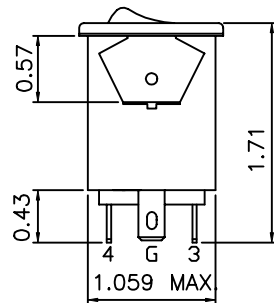
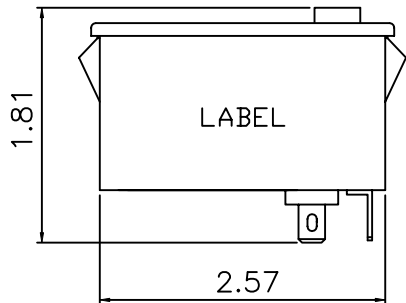


1. MECHANICAL DIMENSIONS :

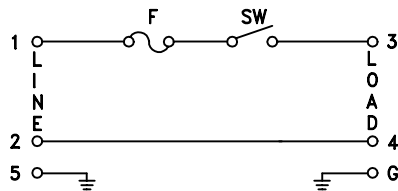
SUGGESTED MOUNTING CUTOUT



Recommended panel thickness 0.04 to 0.07 in



2. ELECTRICAL SCHEMATIC :



3. ELECTRICAL CHARACTERISTICS :

- 3-1. VOLTAGE RATING..... 115/250V
- 3-2. CURRENT RATING
 - A. AT 115VAC 6 A RMS MAX.
 - B. AT 250VAC..... 6 A RMS MAX.
- 3-3. OPERATING FREQUENCY 50-60Hz
- 3-4. LEAKAGE CURRENT EACH LINE TO GROUND
 - A. AT 115VAC 60Hz 2 uA MAX.
 - B. AT 250VAC 50Hz 5 uA MAX.
- 3-5. HIPOT RATING (FOR ONE MINUTE)
 - A. LINE TO GROUND 2000 VAC
 - B. LINE TO LINE 2000 VAC
- 3-6. MINIMUM INSULATION RESISTANCE : @ 500 VDC
 - A. LINE & NEUTRAL TO GROUND..... 100 M OHM.
 - B. LINE TO NEUTRAL..... 100 M OHM.
- 3-7. AMBIENT TEMPERATURE 25°C
- 3-8. OPERATING TEMPERATURE -25°C TO +85°C

Revision			
Rev.	Description	Date	Approved

Dim range (mm)	Tolerance +/- (mm)	Qualtek Electronics Corp. PPC DIVISION		
		Part Number: 762-18/002		
0-1	0.15	Description: MULTI-FUNCTION MODULE		
1-6	0.20	UNIT : INCH	Rev A	
6-18	0.30		Drawn/Date	Checked/Date
18-50	0.50	B.ZHANG		
50-120	0.70	03-19-04		
120-250	0.90			
250-500	1.20			