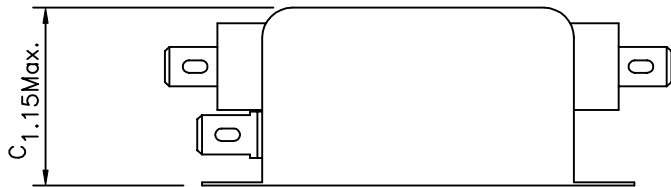
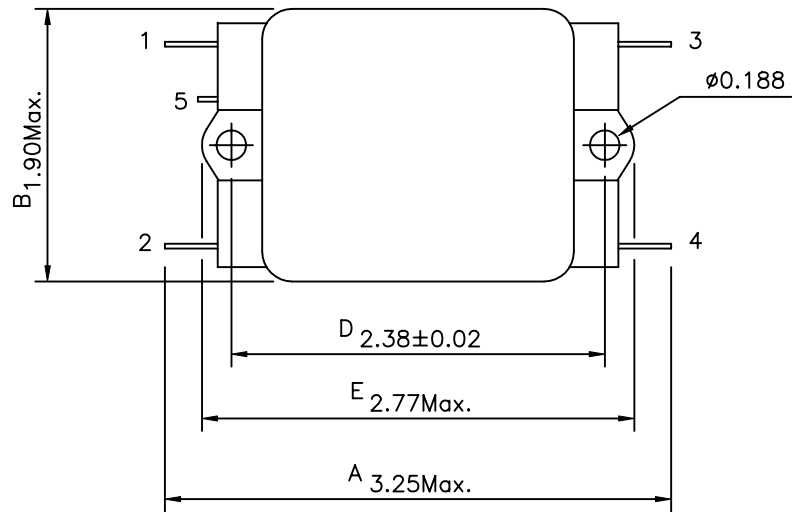
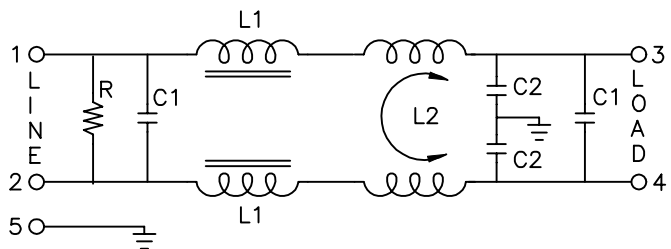


PHYSICAL DIMENSIONS:



SCHEMATIC:



- L1: 30.0uH
- L2: 1.0mH
- C1: 0.22uF
- C2: 3300+2200pF
- R: 330KΩ

Revision			
Rev.	Description	Date	Approved

1. ELECTRICAL CHARACTERISTICS:

- 1-1. VOLTAGE RATING 115/250VAC
- 1-2. CURRENT RATING
 - A. AT 115VAC 3 A RMS Max.
 - B. AT 250VAC 3 A RMS Max.
- 1-3. OPERATING FREQUENCY..... 50/60 Hz
- 1-4. LEAKAGE CURRENT: EACH LINE TO GROUND
 - A. @115VAC 60Hz 0.45 mA Max.
 - B. @250VAC 50Hz 0.90 mA Max.
- 1-5. HIPOT RATING (FOR ONE MINUTE)
 - A. LINE TO GROUND 2250VDC
 - B. LINE TO LINE 1450VDC
- 1-6. TEMPERATURE RANGE: -25 TO +85 DEGREE C
- 1-7. MINIMUM INSERTION LOSS IN dB: (AT 50 OHM SYSTEM)

FREQ. MHz	.01	.05	.10	.15	.50	1.0	5.0	10	30
COM. MODE dB	1	7	10	12	25	30	45	60	35
DIF. MODE dB	0	1	10	20	50	60	45	45	45

1-8. SAFETY



Dim range (mm)	Tolerance +/- (mm)	Qualtek Electronics Corp.		
		PPC DIVISION		
Part Number:		848-03/001		
Description:		EMI FILTER		
0-1	0.15	UNIT: INCH		Approved/Date
1-6	0.20			
6-18	0.30			
18-50	0.50			
50-120	0.70	Drawn/Date	Checked/Date	Approved/Date
120-250	0.90	B.ZHANG	02-07-03	
250-500	1.20	02-07-03		