

GENERAL PURPOSE 2W TO 25 WATT CERAMIC ENCASED RESISTORS PW SERIES



FEATURES

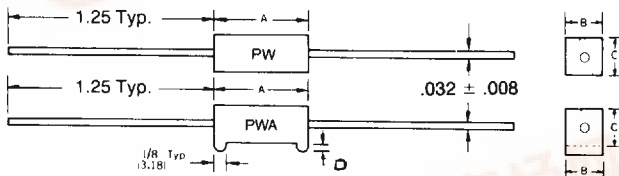
- Low cost, fireproof construction
- **Delivery from stock! (Refer to p. 4). Non-stock items are available on exclusive 'SWIFT' delivery program.**
- $\pm 5\%$ tolerance is standard (available to $\pm 1\%$)
- Wide resistance range: $.05\Omega$ to $100K\Omega$.
- Improved TCR: ± 100 PPM Typ.

SPECIAL MODIFICATIONS

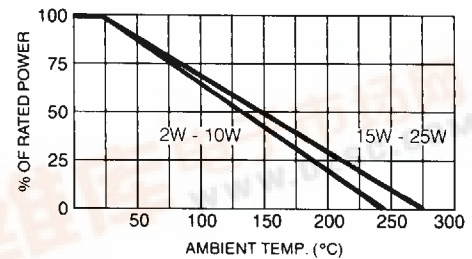
- **STAND-OFFS** (built into ceramic case): Option A
- **STAND-OFFS** (built into radial leads): Option LL
- **NON-INDUCTIVE**: Option X
- **SURGE RESISTORS**: Option P
- **INCREASED WATTAGE**: Option B
- **FUSE RESISTORS**: Option FF
- **POSITIVE T.C.'s**: Option T
- **MOISTURE SEAL**: Option HC

Economical power resistors feature the industry's widest resistance range, up to $100K\Omega$!

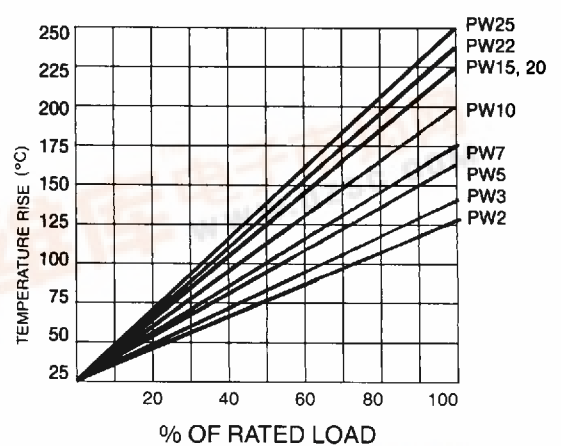
RCD Series PW commercial-grade resistors provide highly reliable continuous operation, far superior to industry standard. Welded cap/lead assembly results in reduced noise levels and improved stability. Proprietary inorganic potting compound was developed for optimum thermal conductivity reducing hot spots commonly found in conventional designs. Construction is completely fireproof, and resistant to solvents.



DERATING CURVE



TEMPERATURE RISE AT 25°C



RCD Type	Wattage		Max.** Resis.	Max. Working Voltage ¹	DIMENSIONS (Numbers in brackets are mm)			
	Std.	Opt. 'B'			A	B	C	D
PW2	2	3	100K	100	$\pm .04$ [1.0]	$\pm .032$ [.81]	$\pm .05$ [1.3]	$\pm .025$ [.64]
PW3	3	5	100K	150	.69 [17.5]	.25 [6.4]	25 [6.4]	.06 [1.5]
PW5	5	7	100K	200	.88 [22.4]	.31 [7.9]	31 [7.9]	.06 [1.5]
PW7	7	10	27K	350	1.39 [35.3]	.38 [9.7]	35 [8.9]	.12 [3.0]
PW10	10	—	30K	500	1.88 [47.8]	.38 [9.7]	38 [9.7]	.12 [3.0]
PW15	15	—	30K	540	1.88 [47.8]	.50 [12.7]	50 [12.7]	.12 [3.0]
PW20	20	—	40K	600	2.50 [63.5]	.50 [12.7]	50 [12.7]	.12 [3.0]
PW22	22	—	40K	650	2.50 [63.5]	.50 [12.7]	50 [12.7]	.12 [3.0]
PW25	25	—	40K	700	2.50 [63.5]	.50 [12.7]	50 [12.7]	.12 [3.0]
PW25S	25	—	40K	650	2.35 [59.7]	.56 [14.2]	56 [14.2]	N/A

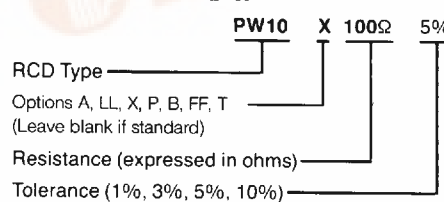
** Power film resistor element used to achieve high resistance values and non-inductive performance.
¹ Max. voltage rating is determined by $E = \sqrt{PR}$, E should not exceed the value listed.

PERFORMANCE SPECIFICATIONS*

Temp.	1 Ω and above	100ppm typ., 300 ppm max.
Coefficient	below 1 Ω	200 pm typ., 600 ppm max.
Terminal Strength		5 lbs. minimum
Operating Temp. -55°C to:		+235° (2W-10W), +275°C (15-250)
Dielectric Strength		1000V
Short-time Overload		2.0% + .05 Ω
Moisture Resistance		5.0% + .05 Ω
High Temp. Exposure		2.0% + .05 Ω
Load Life (1000 hours)		5.0% + .05 Ω
Temperature Cycling		3.0% + .05 Ω
Shock and Vibration		2.0% + .05 Ω

*Consult factory for a detailed Engineering report.

HOW TO ORDER:



Note: RCD utilizes both wirewound and film elements in the construction of PW resistors. Please specify at the time of ordering if a specific type is preferred.