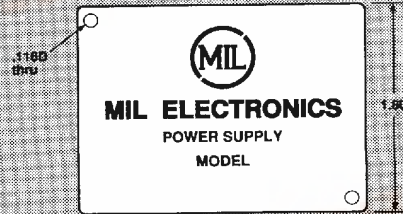


查询SS2100供应商

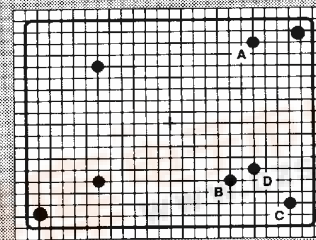
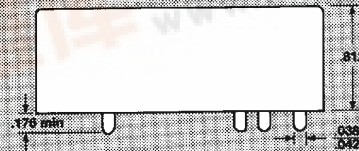
捷多邦 专业PCB打样工厂 24小时加急出货

# SERIES S

- 3 WATTS OF ISOLATED OUTPUT POWER
- TRIPLE, DUAL OR SINGLE OUTPUTS
- PRINTED CIRCUIT MOUNTING
- REGULATED
- ECONOMICAL



T-57-11



Bottom View (Grid Spacing 0.1")

Outputs	A	B	C	D
Single	-		+	
Dual	Com	-	+	
Triple	Com	+5	+15	-15

## ELECTRICAL SPECIFICATIONS

Regulation for Input..... ± .5%  
 Regulation for Load (1/2 to full) ..... ± 1 1/4%  
 All single output units 5, 6, 7V..... ± 2%  
 Output Ripple ..... .3% pp  
 Temp. Stability..... .05%/°C  
 Temp. (operating, Case)..... - 20 to +100°C

Temp. (Storage) ..... - 55 to 100°C  
 Efficiency (Typical) ..... 65%  
 Reverse Polarity..... 100 Volts\*  
 Input Overvoltage..... 50%  
 Isolation (Input-Output) ..... 250 Volts  
 Adjustability..... None

## PHYSICAL SPECIFICATIONS

Weight..... 85 gms  
 Acceleration ..... 45 G's  
 Shock ..... 50 G's  
 Vibration ..... 20 G's  
 Altitude ..... Sea level to space  
 Thermal Shock ..... MIL STD 810/503

Mounting ..... 2 thru holes  
 Terminals ..... Printed circuit pins  
 Case, Finish..... Diallyl phthalate, black  
 Volume ..... 3 cubic inches  
 Semiconductors ..... All silicon  
 Encapsulation ..... 100%

**F.O.B. FACTORY  
 NET 30 DAYS**

\* Reverse polarity not applicable to 5 volt input models

**STANDARD MODELS****SERIES S**  
**DC to DC POWER SUPPLY****SINGLE OUTPUT SUPPLIES**

OUTPUT VOLTAGE VDC	MAXIMUM OUTPUT CURRENT milliamps	MODEL NUMBER			
		INPUT VOLTAGE			
		5 ± .5 VDC	12 ± 2 VDC	24 ± 4 VDC	28 ± 4 VDC
5	600	SS55	SS25	SS45	SS85
6	500	SS56	SS26	SS46	SS86
7	430	SS57	SS27	SS47	SS87
8	380	SS58	SS28	SS48	SS88
9	335	SS59	SS29	SS49	SS89
10	300	SS510	SS210	SS410	SS810
12	250	SS512	SS212	SS412	SS812
14	220	SS514	SS214	SS414	SS814
15	200	SS515	SS215	SS415	SS815
16	190	SS516	SS216	SS416	SS816
18	170	SS518	SS218	SS418	SS818
20	150	SS520	SS220	SS420	SS820
24	125	SS524	SS224	SS424	SS824
28	110	SS528	SS228	SS428	SS828
40	76	SS540	SS240	SS440	SS840
50	60	SS550	SS250	SS450	SS850
70	44	SS570	SS270	SS470	SS870
90	34	SS590	SS290	SS490	SS890
100	30	SS5100	SS2100	SS4100	SS8100
120	26	SS5120	SS2120	SS4120	SS8120
130	23	SS5130	SS2130	SS4130	SS8130
150	20	SS5150	SS2150	SS4150	SS8150
200	15	SS5200	SS2200	SS4200	SS8200
250	12	SS5250	SS2250	SS4250	SS8250

**DUAL OUTPUT SUPPLIES**

OUTPUT VOLTAGE VDC	MAXIMUM OUTPUT CURRENT milliamps	MODEL NUMBER			
		INPUT VOLTAGE			
		5 ± .5 VDC	12 ± 2 VDC	24 ± 4 VDC	28 ± 4 VDC
± 5	± 300	SD55	SD25	SD45	SD85
± 6	± 250	SD56	SD26	SD46	SD86
± 7	± 215	SD57	SD27	SD47	SD87
± 8	± 190	SD58	SD28	SD48	SD88
± 9	± 167	SD59	SD29	SD49	SD89
± 10	± 150	SD510	SD210	SD410	SD810
± 12	± 125	SD512	SD212	SD412	SD812
± 14	± 110	SD514	SD214	SD414	SD814
± 15	± 100	SD515	SD215	SD415	SD815
± 16	± 94	SD516	SD216	SD416	SD816
± 18	± 84	SD518	SD218	SD418	SD818
± 20	± 75	SD520	SD220	SD420	SD820
± 24	± 63	SD524	SD224	SD424	SD824
± 30	± 50	SD530	SD230	SD430	SD830
± 35	± 43	SD535	SD235	SD435	SD835
± 40	± 38	SD540	SD240	SD440	SD840
± 45	± 34	SD545	SD245	SD445	SD845
± 50	± 30	SD550	SD250	SD450	SD850
± 60	± 25	SD560	SD260	SD460	SD860
± 70	± 22	SD570	SD270	SD470	SD870
± 80	± 19	SD580	SD280	SD480	SD880
± 90	± 17	SD590	SD290	SD490	SD890
± 100	± 15	SD5100	SD2100	SD4100	SD8100
± 110	± 14	SD5110	SD2110	SD4110	SD8110

**TRIPLE OUTPUT SUPPLIES**

OUTPUT VOLTAGE VDC	MAXIMUM OUTPUT CURRENT milliamps	MODEL NUMBER			
		INPUT VOLTAGE			
		5 ± .5 VDC	12 ± 2 VDC	24 ± 4 VDC	28 ± 4 VDC
± 15	± 70	ST5	ST2	ST4	ST8
± 5	± 200	CALL FACTORY FOR OTHER TRIPLE OUTPUTS			