

2-WAY POWER DIVIDER

SURFACE MOUNT MODEL: SDL-4

WIDE BANDWIDTH

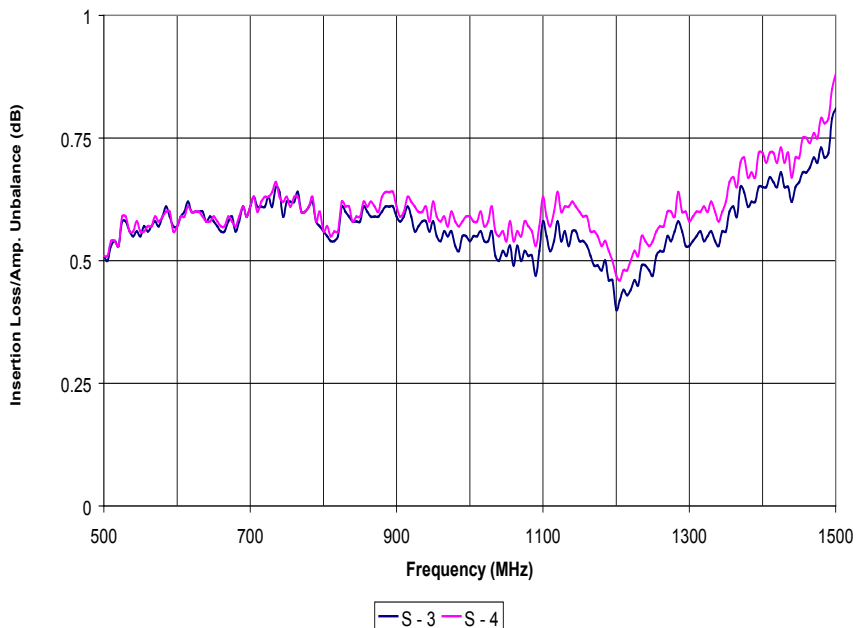
500 - 1500 MHz

FEATURES:

- ▶ Excellent Performance
- ▶ Wide Bandwidth
- ▶ Small Size, Surface Mount
- ▶ Moderate Power

APPLICATIONS:

- ▶ Signal Splitting & Low Power Combining



SPECIFICATIONS (Rev. C 12/18/06)

Frequency	500 - 1500 MHz		
Insertion Loss*	Freq. (MHz)	dB (Typ.)	dB (Max.)
	500-1000	0.6	0.8
	1000-1500	0.7	1.2
Isolation	Freq. (MHz)	dB (Typ.)	dB (Min.)
	500-1000	22	15
	1000-1500	18	13
Phase Unbalance	Freq. (MHz)	Degrees (Max.)	
	500-1000	3°	
	1000-1500	5°	
Amplitude Unbalance	Freq. (MHz)	dB (Max.)	
	500-1000	0.3	
	1000-1500	0.5	
Input Power Rating	1 Watt (Max.)		
Output Impedance	50 Ohms (Nom.)		
Operating Temperature Range	-40 to +85 °C		

* Above the 3dB theoretical split loss.

Package # 159

PIN CONFIGURATION

Input	Output	Ext. Gnd.
6	3,4	1,2,5

LAYOUT FOR PRINTED CIRCUIT DESIGN.



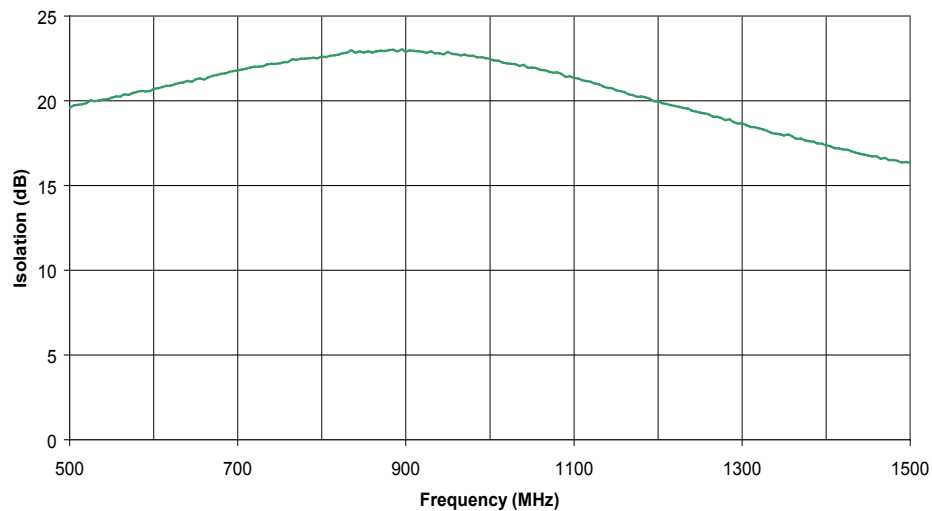
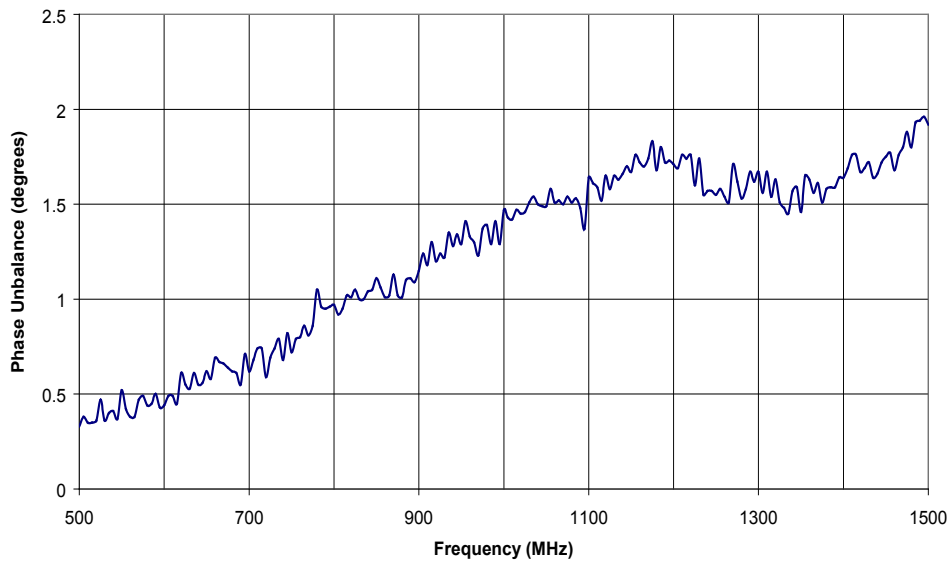
2-WAY POWER DIVIDER

SURFACE MOUNT MODEL: SDL-4

WIDE BANDWIDTH

500 - 1500 MHz

PERFORMANCE PLOTS



2-WAY POWER DIVIDER

SURFACE MOUNT MODEL: SDL-4

WIDE BANDWIDTH

500 - 1500 MHz

PERFORMANCE PLOTS

