

查询AFS8600供应商

AuthenTec FingerLoc 8600

Secure Mid-Size Touch Sensor for Access Control Solutions

捷多邦，专业PCB打样工厂，24小时加急出货



The FingerLoc 8600 provides AuthenTec's advanced security in a low cost, medium-size touch sensor for the physical access control market.

Widely used in door locks and time and attendance devices, the **FingerLoc 8600** features ultra-hard surface coating, ruggedized packaging, and superior electrostatic discharge (ESD) protection – enabling the sensor to perform even in harsh outdoor environments.

The **FingerLoc 8600**'s wide image area is capable of supporting AuthenTec and third-party matching technology – enabling manufacturers to design the sensor into new or existing biometric solutions. The **FingerLoc 8600**'s multiple interfaces also make it easy for developers to integrate with existing industry standard microprocessors.

KEY FEATURES AND BENEFITS

SUPERIOR TECHNOLOGY

- TruePrint technology provides the most accurate fingerprint image.
- TrueMatch pattern matching technology runs on high-performing embedded or host processor.

EASY TO USE

- Able to read virtually every fingerprint
- Pattern matching technology delivers the industry's best enroll, verify and reject performance (false accept/false reject)

EASY INTEGRATION

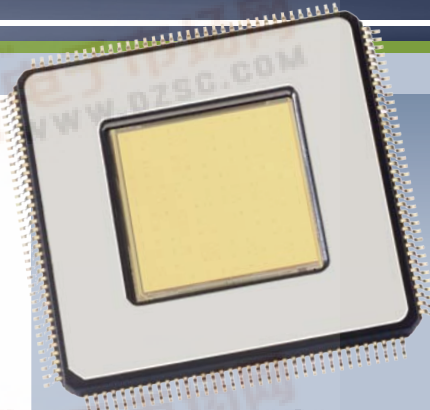
- Turnkey access control development kits
- Software development kit support popular embedded processors
- Sensor size permits use of third-party matchers

DURABILITY

- Ultra hard surface coating withstands greater than 1 million touches
- Ruggedized packaging, includes stainless steel bezel
- Superior 15KV ESD resistance

LOW SOLUTION COST

- Highly integrated sensor
- Minimal bill of materials



DOORS



SAFES



AUTOMOTIVE



ATMS

The Power of Touch



AuthenTec FingerLoc 8600

THE AUTHENTEC DIFFERENCE

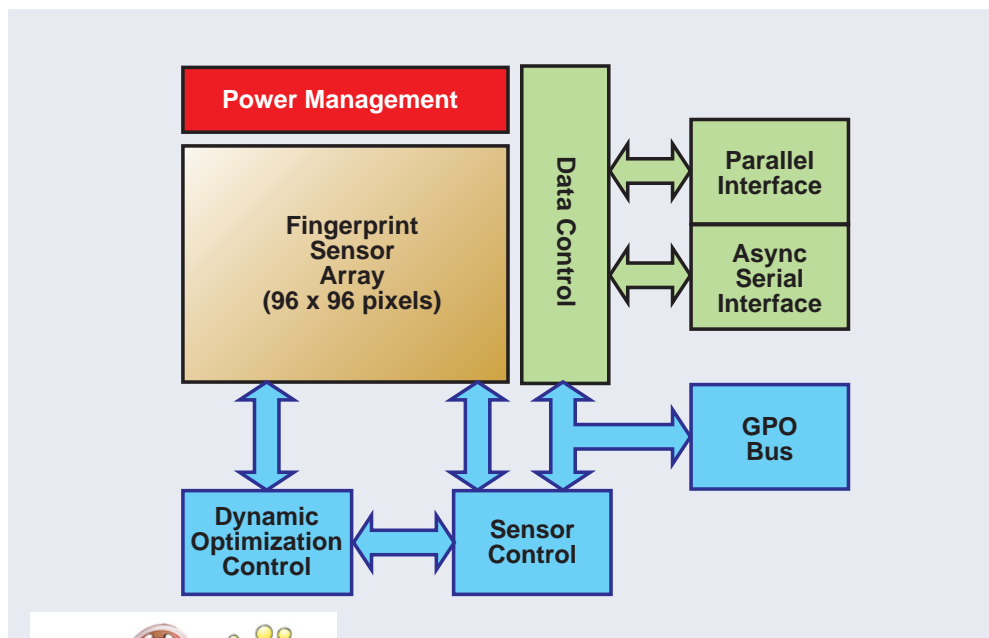
SUPERIOR TRUEPRINT AND TRUEMATCH TECHNOLOGIES

The FingerLoc 8600 employs AuthenTec's award winning TruePrint® and TrueMatch technologies, the most accurate sensor and pattern matching technologies in the industry. These combined technologies capture the highest quality fingerprint images – resulting in significantly better performance than any other solution on the market today.

FingerLoc 8600 SPECIFICATIONS

High Performance Features	Advanced security
	Ruggedized packaging
	Multiple systems interfaces
	Superior ESD resistance
Form Factor	Standard JEDEC 144-pin LQFP package
	20mm x 20mm x 1.55mm
Robust Packaging	Scratch and impact resistant
	Ultra hard surface coating withstands greater than 1 million touches
	RoHS compliant / Lead free
Detection Matrix	96 x 96 pixels
	9.75mm x 9.75mm
	250 ppi resolution images
SelectaBus	Asynchronous serial interface
	8-bit parallel interface
Selectable Operating Voltage Range	3.3V or 5.0V
Commercial Temperature Range	-20C to +70C
Current Consumption @ 3.3V	65mA imaging
	30mA finger detect
	25uA sleep mode
ESD Resistance	IEC 61000-4-2 Level 4 (+/- 15KV)

FingerLoc 8600 APPLICATION BLOCK DIAGRAM



THE AUTHENTEC TOTAL SOLUTION

AuthenTec offers the most complete and flexible solution to enable manufacturers to design in advanced biometric fingerprint sensors. Our total solution approach includes a complete family of sensors; hardware and software kits for easy evaluation and integration; proven solutions from more than 50 hardware, software and design partners; and end-to-end integration support from an experienced technical staff.

CONTACT US

NORTH AMERICA

AuthenTec | U.S. Headquarters
709 South Harbor City Blvd.
Melbourne, FL 32901 USA
phone: 321-308-1300

San Jose, CA

phone: 408-879-2383

EUROPE

Germany | Munich

phone: 49 (8444) 918290

ASIA

China | Asia Headquarters
4000 Wen Xiang Road
Songjiang Shanghai 201616
phone: 86-21-5776-3300

Japan | Tokyo

phone: 81-80-5026-9710

Taiwan | Taipei

phone: 886-932 309 181

Korea | Seoul

phone: 82-11-380-6164

WORLDWIDE

REPRESENTATIVES NETWORK

A complete listing of AuthenTec's network of representatives is available at our web site.

www.authentec.com