

TOSHIBA

TD6304,08AP

TOSHIBA BIPOLAR DIGITAL INTEGRATED CIRCUIT SILICON MONOLITHIC

TD6304AP, TD6308AP

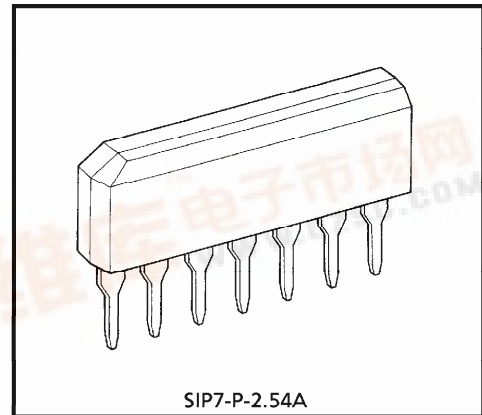
AUTO REVERSE & AUTO EJECT PLUNGER DRIVER

TD6304AP, TD6308AP are IC developed for auto reverse / auto eject on a car stereo.

There are two methods for driving the plunger ; one is to drive it after motor rotation detecting signal is stopped and the other is to drive it optionally by program switch. Further, this IC can be used as a solenoid driver in the control circuit of a stereo, remote control system and other electric accessories.

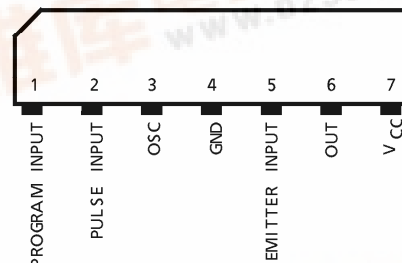
FEATURES

- Plunger driving output transistor is built in.
No.6 pin output $I_{OUT} = 200mA$ ($V_{CE(sat)} = 0.7V$ (Max.))
- Manual operation by program switch is possible.
- Time for output pulse generation after rotation detecting signal is stopped and output pulse width are variable by external mounted capacitor and resistor. (Duty cycle of output pulse is set inside IC)
- A load dump circuit is built in for protection from overvoltage.
- Operating supply voltage $V_{CC(opr)} = 8 \sim 16V$
(7 pin voltage)
- TD6304AP is 1/4 duty cycle.
- TD6308AP is 1/8 duty cycle.



Weight : 0.7g (Typ.)

PIN CONNECTION (Side view)

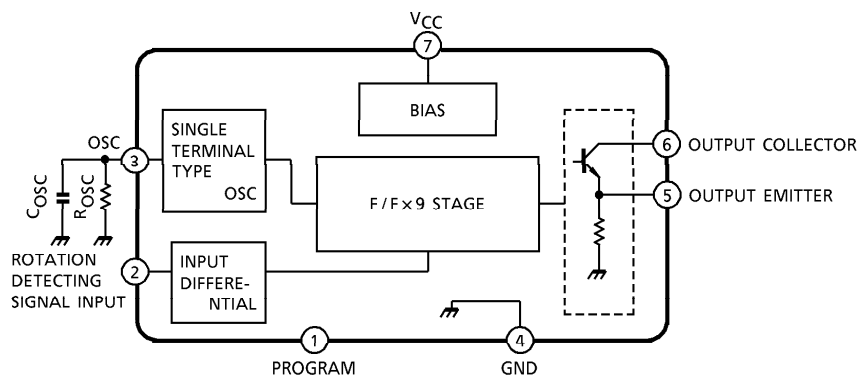


961001EBA1

- TOSHIBA is continually working to improve the quality and the reliability of its products. Nevertheless, semiconductor devices in general can malfunction or fail due to their inherent electrical sensitivity and vulnerability to physical stress. It is the responsibility of the buyer, when utilizing TOSHIBA products, to observe standards of safety, and to avoid situations in which a malfunction or failure of a TOSHIBA product could cause loss of human life, bodily injury or damage to property. In developing your designs, please ensure that TOSHIBA products are used within specified operating ranges as set forth in the most recent products specifications. Also, please keep in mind the precautions and conditions set forth in the TOSHIBA Semiconductor Reliability Handbook.
- The products described in this document are subject to foreign exchange and foreign trade control laws.
- The information contained herein is presented only as a guide for the applications of our products. No responsibility is assumed by TOSHIBA CORPORATION for any infringements of intellectual property or other rights of the third parties which may result from its use. No license is granted by implication or otherwise under any intellectual property or other rights of TOSHIBA CORPORATION or others.
- The information contained herein is subject to change without notice.



BLOCK DIAGRAM



PIN DESCRIPTION

PIN NO.	SYMBOL	DESIGNATION	FUNCTION
1	PROG	Program Switch Terminal	Terminal used for forcing plunger output ON regardless of state of rotation detecting output / input. However, one output only is transmitted per operation.
2	INPUT	Rotation Detecting Signal Input Terminal	Rotation detecting pulse input terminal. Plunger output is transmitted at certain time after input is stopped.
3	OSC	Oscillator Terminal	Terminal used for connecting oscillation capacitor and resistor for setting response time and driving time of plunger output, when $C_{OSC} = 0.22\mu F$, $R_{OSC} = 30k\Omega$, $f_{OSC} \doteq 500Hz$ is attained.
5	E-OUT	Emitter Output Terminal	Emitter output of output transistor is transmitted. Further, this terminal is used for Darlington connection with an externally mounted transistor. This terminal is normally earthed to GND through a resistor.
6	OUT	Plunger Output Terminal	Plunger driving output terminal. $V_{sat} = 0.7V$ and $I_{OUT} = 200mA$ are transmitted when 5 pin is earthed. (Open collector)
7	V _{CC}	Power Terminal	Supply Voltage $V_{CC} = 8.0 \sim 16.0V$ is applied.
4	GND	Earth Terminal	For grounding

OUTLINE OF FUNCTION

- (1) How to decide oscillator frequency

Oscillator wave form



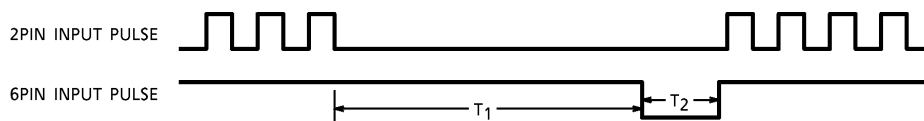
$$T_{OSC} = C_{OSC} (0.247R_{OSC} + 1435) \text{ (ms)}$$

C_{OSC} and R_{OSC} are an externally mounted resistor and capacitor deciding oscillator frequency, respectively.

T_{OSC} can be calculated from above calculating formula, but when T_{OSC} - R_{OSC} graph is used, C_{OSC} and R_{OSC} deciding desired oscillator frequency can be selected easily.

- (2) Plunger output when pulse input is stopped.

Output wave form and timing are as follows.



- (a) In case of TD6304AP

T_1 : Plunger response time typical 0.75s (When $f_{OSC} \cong 500\text{Hz}$)

T_2 : Plunger drive time typical 0.25s (When $f_{OSC} \cong 500\text{Hz}$)

Above T_1 and T_2 can be calculated from the following formula :

$$T_1 = \frac{3}{4} \times 512 \times T_{OSC} \text{ (s)}$$

$$T_2 = \frac{1}{4} \times 512 \times T_{OSC} \text{ (s)}$$

- (b) In case of TD6308AP

T_1 : Plunger response time typical 0.88s (When $f_{OSC} \cong 500\text{Hz}$)

T_2 : Plunger drive time typical 0.12s (When $f_{OSC} \cong 500\text{Hz}$)

T_1 and T_2 can be calculated from the following formula :

$$T_1 = \frac{7}{8} \times 512 \times T_{OSC} \text{ (s)}$$

$$T_2 = \frac{1}{8} \times 512 \times T_{OSC} \text{ (s)}$$

(c) Method for selecting T_1 and T_2 from graphs.

Externally mounted capacitor and resistor for plunger response time T_1 and plunger drive time T_2 can be easily selected when $T_1, T_2 - C_{OSC}, R_{OSC}$ graphs are used. For instance, in case of TD6304AP, if it is desired to set plunger response time T_1 at 1s, when $C_{OSC} = 0.47\mu F$ is used at plunger response time shown by dotted line, R_{OSC} is approx. $20k\Omega$ and the plunger drive time T_2 shown by solid line will be 0.34s.

Other C_{OSC} can also be selected in the same manner.

When $C_{OSC} = 0.33\mu F$, $R_{OSC} \doteq 30k\Omega$, $T_2 \doteq 0.34s$

When $C_{OSC} = 0.22\mu F$, $R_{OSC} \doteq 47k\Omega$, $T_2 \doteq 0.34s$

and values of T_1 and T_2 do not change even when C and R constants are changed.

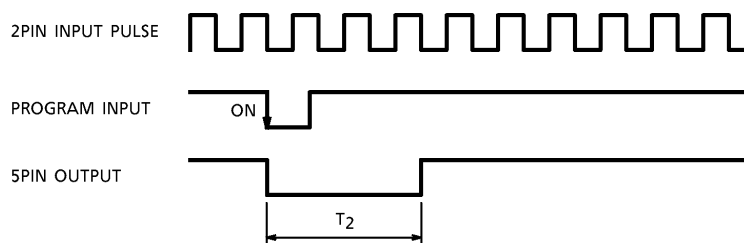
T_1 and T_2 of TD6308AP can be selected in the same manner as in TD6304AP.

Duty cycle is, TD6304AP $T_1 : T_2 = 3 : 1$

TD6308AP $T_1 : T_2 = 7 : 1$

(3) Plunger output when program switch is operated.

Output wave form and timing are as follows.



T_2 : Plunger drive time

In case of TD6304AP, T_2 is 0.25s (When $f_{OSC} \doteq 500Hz$)

In case of TD6308AP, T_2 is 0.12s (When $f_{OSC} \doteq 500Hz$)

Actually, output is transmitted only one time within 50ms after program switch is operated.

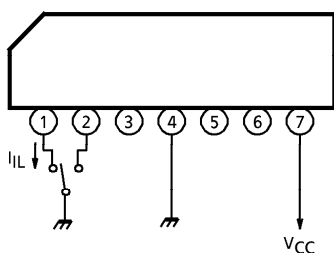
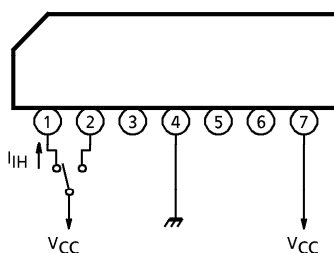
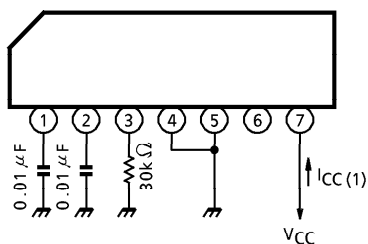
MAXIMUM RATINGS (Ta = 25°C)

CHARACTERISTIC	SYMBOL	RATING	UNIT
Supply Voltage	V _{CC}	30	V
Output Voltage	V _{OUT}	30	V
Output Current	I _{OUT}	400	mA
Power Dissipation	P _D	400	mW
Operating Temperature	T _{opr}	– 30~75	°C
Storage Temperature	T _{stg}	– 55~150	°C

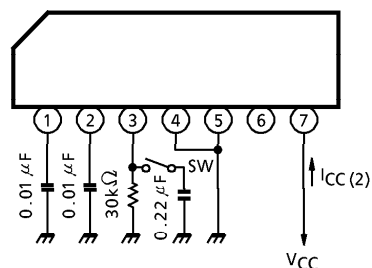
ELECTRICAL CHARACTERISTICS (Unless otherwise specified, V_{CC} = 13.2V, Ta = 25°C)

CHARACTERISTIC		SYMBOL	TEST CIR- CUIT	TEST CONDITION	MIN.	TYP.	MAX.	UNIT
Operating Supply Voltage		V _{CC}	—	Ta = – 30~75°C	8.0	—	16.0	V
Supply Current		I _{CC1}	3	Plunger ON	7.5	13.0	20.0	mA
		I _{CC2}	4	Plunger OFF	3.6	5.0	8.0	mA
Plunger Output Current		I _{OUT}	5	V _{CE (sat)} = 0.7V	200	—	—	mA
Saturation Voltage Between Collector and Emitter		V _{CE (sat)}	—	Test for pins No.6 & No.5 I _{OUT} = 400mA	—	—	1.5	V
Input Current	"L" Level	I _{IL}	1	Test for Pins V _{IL} = 0	60	—	130	μA
	"H" Level	I _{IH}	2	No.1 & No2 V _{IH} = 13.2V	—	—	5.0	μA
Rotary detecting Input Voltage	"H" Level	V _{IH}	6	Input Signals of No.2 pins	2.5	—	V _{CC}	V
	"L" Level	V _{IL}	6		—	—	0.8	V
Oscillator Frequency		f _{OSC}	—	C = 0.22μF, R = 30kΩ	—	500	—	Hz
Plunger Response Time	TD6304AP	T ₁	—	f _{OSC} = 500Hz	—	0.75	—	s
	TD6308AP				—	0.88	—	
Plunger Driving Time	TD6304AP	T ₂	—	f _{OSC} = 500Hz	—	0.25	—	s
	TD6308AP				—	0.12	—	

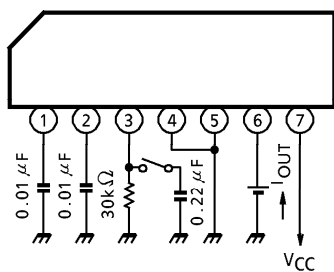
TEST CIRCUIT

1. I_{IL} 2. I_{IH} 3. $I_{CC(1)}$ 

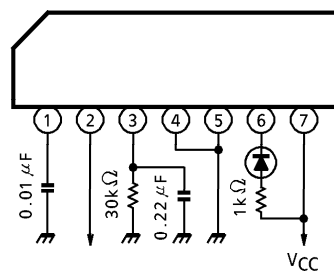
(Note) Output should be OFF

4. $I_{CC(2)}$ 

(Note) When output is ON, take a measurement with switch "S" opened.

5. I_{OUT} 

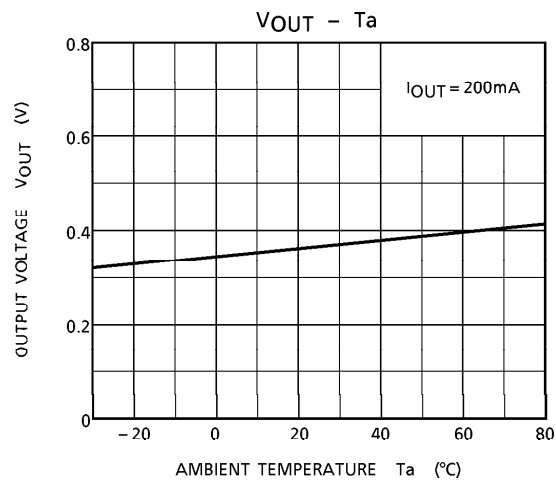
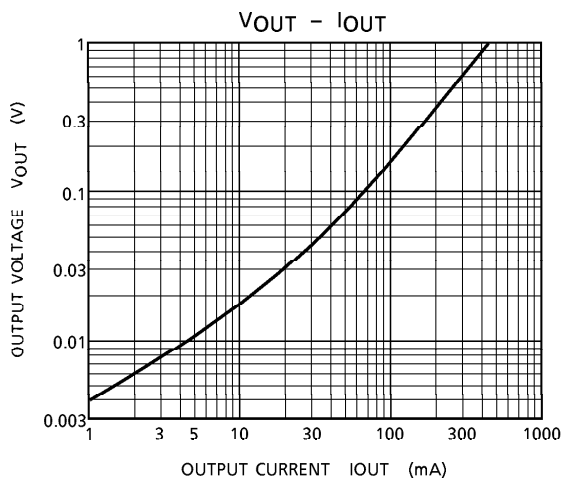
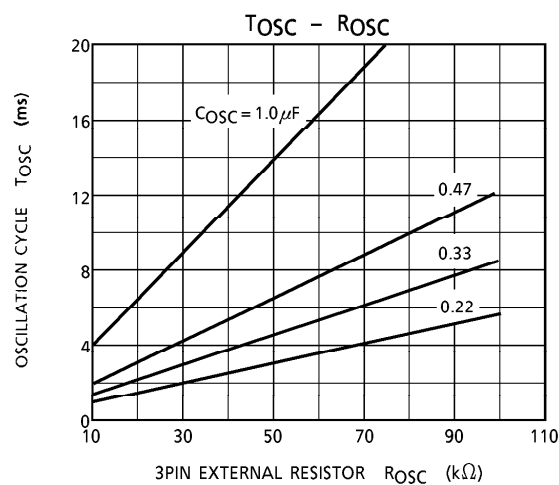
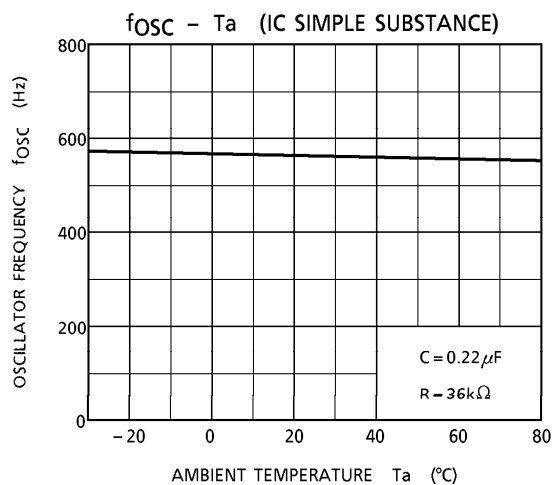
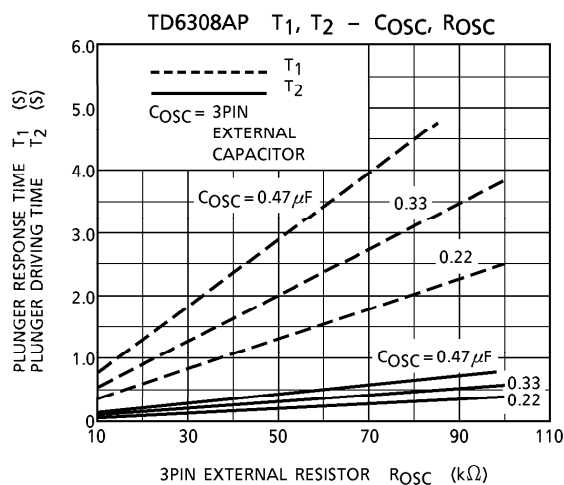
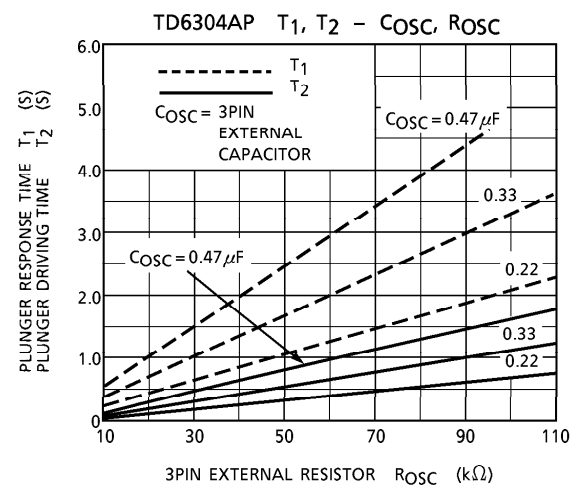
(Note) When output is ON, open switch "S" and measure current I_{OUT} that flows when $V = 0.7V$ is applied to No.6 pin.

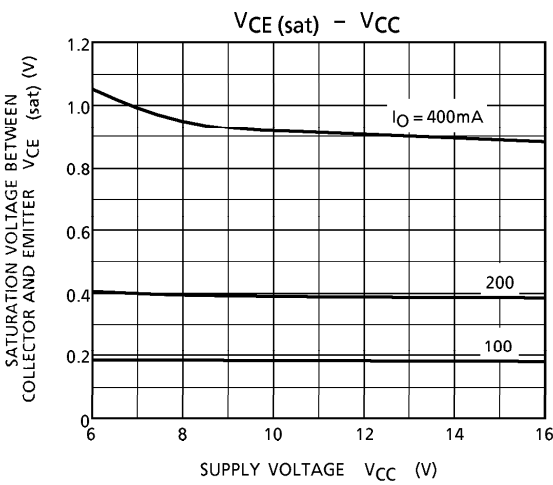
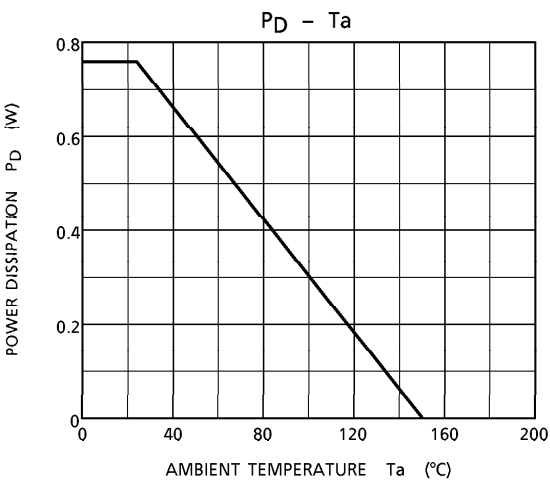
6. V_{IH} , V_{IL} 

(Note) Add the following pulse to V_{IN} .



Adding V_{IN} pulse to No.2 pin, check if LED is illuminated.

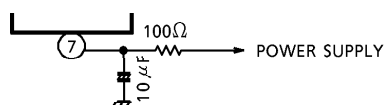




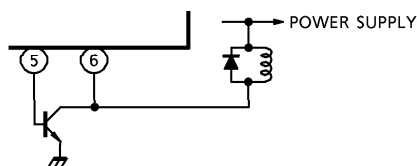
CAUTIONS IN USE

To prevent troubles during use and improve reliability, following cautions shall be observed.

1. This IC shall be used within max. rating. In particular, when there is the possibility for applying of surge voltage, this IC shall be so protected that it is kept in max. rating.
2. Except No.4 pin (GND Terminal), all terminals shall be used in a range of positive potential against No.4 pin.
3. A capacitor externally mounted to No.3 pin (OSC Terminal) should have excellent temperature and frequency characteristics.
4. To protect IC from surge voltage on power line, a resistor (100Ω or above) and capacitor ($10\mu\text{F}$ or above) shall be connected to No.7 pin.

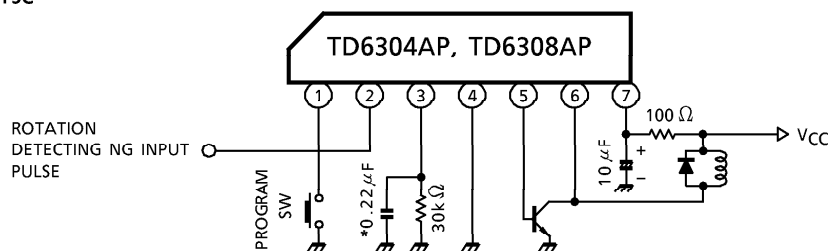


5. When the plunger is connected to the output circuit, diode shall be connected to both leads of the plunger to protect IC from counter electromotive force when power is turned OFF.

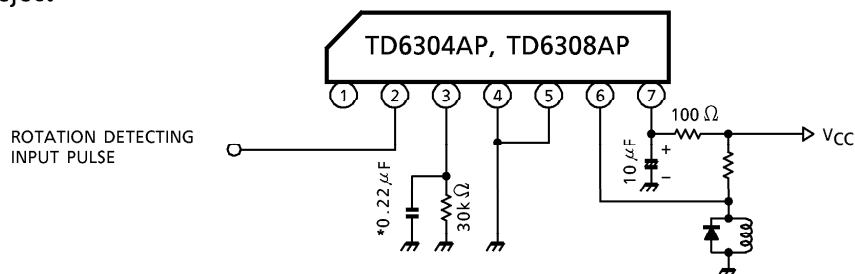


APPLICATION CIRCUIT

1. Auto reverse



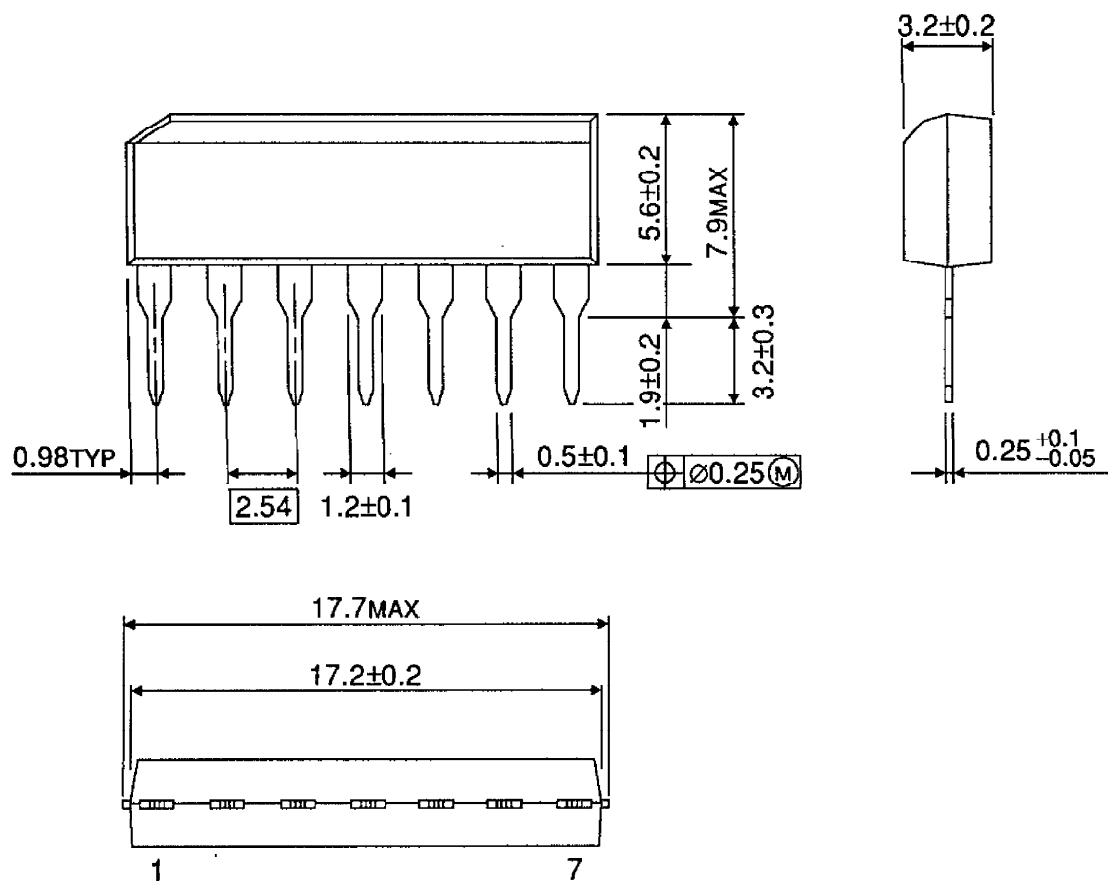
2. Auto eject



(*) External mounted capacitor with less equivalent series resistance is recommended.

OUTLINE DRAWING
SIP7-P-2.54A

Unit : mm



Weight : 0.7g (Typ.)