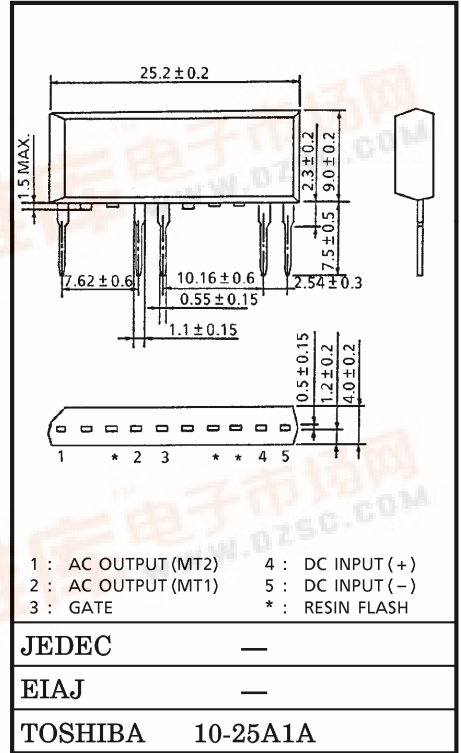


TOSHIBA AC SWITCH OPTICALLY ISOLATED AC SWITCH WITH ZERO VOLTAGE TURN-ON FUNCTION

TSA3001G, TSA3001J

Unit in mm

- R.M.S. ON-STATE CURRENT : I_T (RMS) = 0.2~3A
- Repetitive Peak Off-State Voltage : V_{DRM} = 400, 600V
- Isolation Voltage between input to output : 3000VAC (t=1min.)
- Thickness of inner insulation material : 0.8mm (min.)
- Creepage distances, Clearances for insulation between input and output side : 6mm (min.)
- TTL drive is available

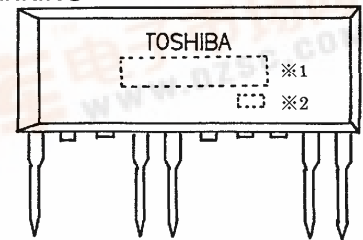


MAXIMUM RATINGS (Ta = 25°C)

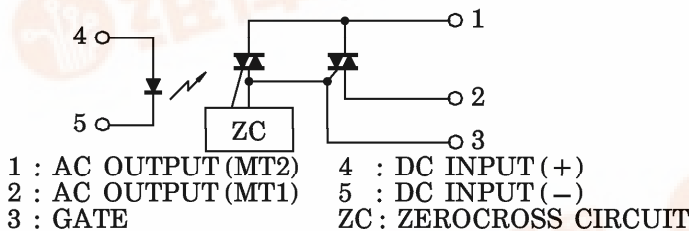
CHARACTERISTIC		SYMBOL	RATING	UNIT
INPUT	Forward Current	I_F (IN)	50	mA
	Forward Current Derating (Ta ≥ 53°C)	$\Delta I_F / ^\circ C$	-0.7	mA / °C
	Peak Forward Current (100μs pulse, 100pps)	I_{FP}	1	A
	Reverse Voltage	V_R	5	V
OUTPUT	Repetitive Peak Off-State Voltage	TSA3001G	400	V
		TSA3001J	600	
	Nominal AC Line Voltage (Note 1)	TSA3001G	80~125	V
		TSA3001J	80~250	
	R.M.S. On-State Current (Sine Waveform, R.M.S.)	I_T (RMS)	0.2~3	A
	Peak One Cycle Surge On-State Current (Non-Repetitive)	I_{TSM}	80 (50Hz)	A
88 (60Hz)				
I^2t Limit Value	I^2t	32	A ² s	
Operating Frequency Range	f	45~65	Hz	
Operating Temperature Range	T _{opr}	-40~100	°C	
Storage Temperature Range	T _{stg}	-40~100	°C	
Isolation Voltage (Input to Output) Note 2	BV_s	3000	V	

Weight : 2g (TYP.)

MARKING



EQUIVALENT CIRCUIT



(The cutted pins near by Pin No.1 & No.3 is connecting in electrically with output terminal)

Note 1 : When the voltage larger than applied AC voltage is applied to the device such as 2 phase motor and others, please derating for this maximum rating value.

Note 2 : TEST CONDITION... AC, t = 60s, RH ≤ 60%

Note 3 : Soldering of printed wiring board should be used under 260°C and 10 seconds.

NUMBER	SYMBOL	MARK
※1	TYPE	TYPE
	TSA3001G	TSA3001G
	TSA3001J	TSA3001J
※2	Lot Number	Example
	Month (Starting from Alphabet A) Year (Last Number of the Christian era)	3A : January 1993 3B : February 1993 3L : December 1993

961001EAA2

● TOSHIBA is continually working to improve the quality and the reliability of its products. Nevertheless, semiconductor devices in general can malfunction or fail due to their inherent electrical sensitivity and vulnerability to physical stress. It is the responsibility of the buyer, when utilizing TOSHIBA products, to observe standards of safety, and to avoid situations in which a malfunction or failure of a TOSHIBA product could cause loss of human life, bodily injury or damage to property. In developing your designs, please ensure that TOSHIBA products are used within specified operating ranges as set forth in the most recent products specifications. Also, please keep in mind the precautions and conditions set forth in the TOSHIBA Semiconductor Reliability Handbook.



ELECTRICAL CHARACTERISTICS (Ta = 25°C)

CHARACTERISTIC		SYMBOL	TEST CONDITION	MIN.	TYP.	MAX.	UNIT
INPUT	Forward Voltage	V_F	$I_F = 10\text{mA}$	1.0	1.15	1.3	V
	Reverse Current	I_R	$V_R = 5\text{V}$	—	—	10	μA
	Capacitance	C_T	$V_T = 0\text{V}, f = 1\text{MHz}$	—	20	—	pF
OUTPUT	Peak Off-State Current	I_{DRM}	$V_{DRM} = \text{Rated}$	—	—	10	μA
	Peak On-State Voltage	V_{TM}	$I_{TM} = 12\text{A}$	—	—	1.5	V
	Holding Current	I_H	$V_D = 6\text{V}, \text{Beginning Current} = 1\text{A}$	—	—	25	mA
	Critical Rate of Rise of Off-State Voltage	dv/dt	$V_{DRM} = \text{Rated}$	—	2000	—	$\text{V}/\mu\text{s}$
	Critical Rate of Rise of Commutating Voltage	$(dv/dt)_c$	$V_D = 400\text{V}$ $-di/dt = 30\text{A/ms}$	—	30	—	$\text{V}/\mu\text{s}$
	Thermal Resistance	Junction to Lead	$R_{th(j-l)}$	AC	—	—	20
Junction to Ambient		$R_{th(j-a)}$	AC	—	—	85	$^\circ\text{C}/\text{W}$

COUPLED ELECTRICAL CHARACTERISTICS (Ta = 25°C)

CHARACTERISTIC	SYMBOL	TEST CONDITION	MIN.	TYP.	MAX.	UNIT
Trigger LED Current	I_{FT}	$V_D = 6\text{V}, R_L = 20\Omega$	—	—	10	mA
Inhibit Voltage	V_{IH}	$I_F = 10\text{mA}, R_L = 20\Omega$	—	38	50	V
Capacitance (Input to output)	C_S	$V_S = 0\text{V}, f = 1\text{MHz}$	—	0.5	—	pF
Isolation Resistance	R_S	$V = 500\text{V}, R_H \leq 60\%$	10^9	—	—	Ω
Turn-off Time	t_{off}	OUTPUT : Sine Waveform	—	—	3/4	cycle

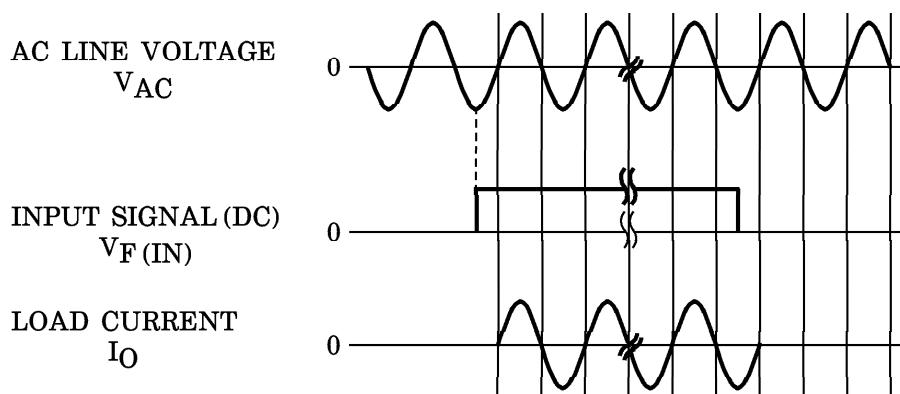


Fig.1 ZERO VOLTAGE SWITCHING WAVEFORM

961001EAA2'

● The information contained herein is presented only as a guide for the applications of our products. No responsibility is assumed by TOSHIBA CORPORATION for any infringements of intellectual property or other rights of the third parties which may result from its use. No license is granted by implication or otherwise under any intellectual property or other rights of TOSHIBA CORPORATION or others.
 ● The information contained herein is subject to change without notice.

