

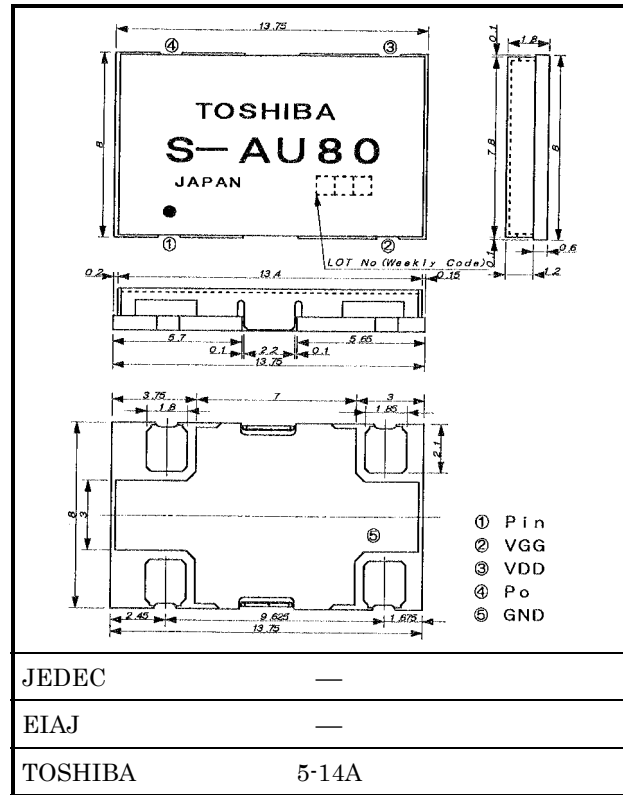
TOSHIBA RF Power Amplifier Module

S - A U 8 0

900 MHz Band Amplifier Applications (GSM)

Unit: mm

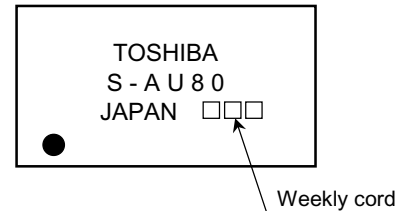
- Output Power: $P_o = 35.0$ dBmW (typ.)
- Power Gain: $G_p = 35.0$ dB (typ.)
- Total Efficiency: $\eta_T = 43\%$ (typ.)



Maximum Ratings (Ta = 25°C)

Characteristic	Symbol	Rating	Unit
DC Supply Voltage	V _{DD}	8 (Note1)	V
DC Supply Voltage	V _{GG}	5 (Note2)	V
DC Current	I _{DD}	5	A
Input Power	P _i	6	dBmW
Output Power	P _o	36 (Note3)	dBmW
Operating Case Temperature Range	T _{c (opr)}	-30~85	°C
Storage Temperature Range	T _{stg}	-40~110	°C

Type Name



- Note1: This value is specified at no operation (V_{GG} = 0 V, P_i = none)
- Note2: This value is specified at no operation (V_{DD} = 0 V, P_i = none)
- Note3: This value is specified at no 50 Ω load operation

961001EAA1

• TOSHIBA is continually working to improve the quality and the reliability of its products. Nevertheless, semiconductor devices in general can malfunction or fail due to their inherent electrical sensitivity and vulnerability to physical stress. It is the responsibility of the buyer, when utilizing TOSHIBA products, to observe standards of safety, and to avoid situations in which a malfunction or failure of a TOSHIBA product could cause loss of human life, bodily injury or damage to property. In developing your designs, please ensure that TOSHIBA products are used within specified operating ranges as set forth in the most recent products specifications. Also, please keep in mind the precautions and conditions set forth in the TOSHIBA Semiconductor Reliability Handbook.

• The information contained herein is presented only as a guide for the applications of our products. No responsibility is assumed by TOSHIBA CORPORATION for any infringements of intellectual property or other rights of the third parties which may result from its use. No license is granted by implication or otherwise under any intellectual property or other rights of TOSHIBA CORPORATION or others.

• The information contained herein is subject to change without notice.

Electrical Characteristics (Ta = 25°C)

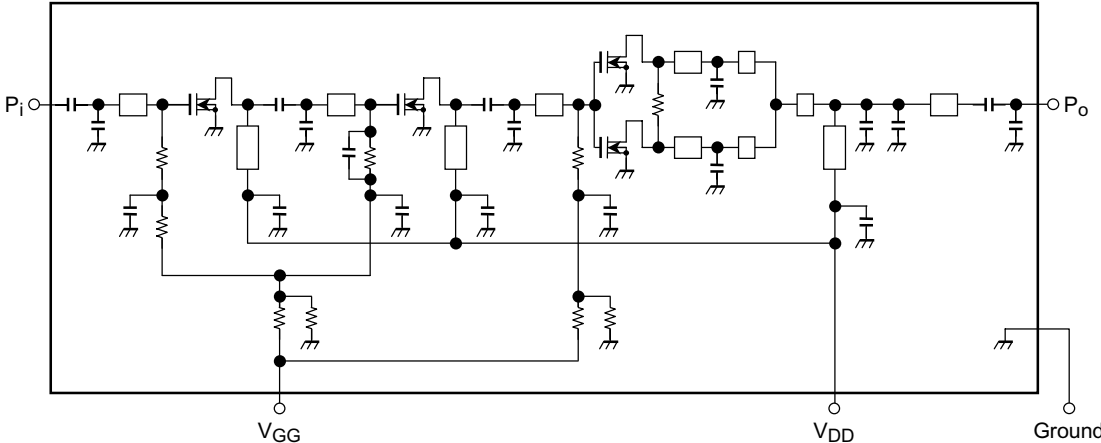
Characteristic	Symbol	Test Condition	Min	Typ.	Max	Unit	
Frequency range	f_{range}	—	880	—	915	MHz	
Leakage current	I_{leak}	$V_{\text{DD}} = 6.0, V_{\text{GG}} = 0 \text{ V}$	—	500	—	μA	
Output power	P_{o}	$P_{\text{i}} = 0 \text{ dBmW}, V_{\text{DD}} = 3.6 \text{ V}, V_{\text{GG}} \leq 2.5 \text{ V}$	34.5	35.0	—	dBmW	
Power gain	G_{p}	$Z_{\text{G}} = Z_{\text{L}} = 50 \Omega$	34.5	35.0	—	dB	
Total efficiency (Note4)	Eff	$P_{\text{i}} = 0 \text{ dBmW}, V_{\text{DD}} = 3.6 \text{ V}, V_{\text{GG}} \leq 2.5 \text{ V}$ $P_{\text{o}} = 34.5 \text{ dBmW}, Z_{\text{G}} = Z_{\text{L}} = 50 \Omega$	37	43	—	%	
Input VSWR	VSWR		—	—	3.0	—	
Control current	I_{cont}	$P_{\text{i}} = 0 \text{ dBmW}, V_{\text{DD}} = 3.6 \text{ V}, V_{\text{GG}} \leq 2.5 \text{ V}$	—	0.5	1.0	mA	
2nd harmonics	2 nd HRM	$P_{\text{o}} = 34.5 \text{ dBmW}, Z_{\text{G}} = Z_{\text{L}} = 50 \Omega$	—	-45	-35	dB	
3rd harmonics	3 rd HRM		—	-50	-40	dB	
Low voltage power	$P_{\text{o-L}}$	$P_{\text{i}} = 0 \text{ dBmW}, V_{\text{DD}} = 3.2 \text{ V}, V_{\text{GG}} \leq 2.5 \text{ V}$ $Z_{\text{G}} = Z_{\text{L}} = 50 \Omega, T_{\text{c}} = 85^{\circ}\text{C}$	33.5	34.0	—	dBmW	
Isolation	$P_{\text{o-iso}}$	$P_{\text{i}} = 0 \text{ dBmW}, V_{\text{DD}} = 3.6 \text{ V}, V_{\text{GG}} = 0.3 \text{ V}$ $Z_{\text{G}} = Z_{\text{L}} = 50 \Omega$	—	-40	-37	dBmW	
AM-AM conversion	AM _{con}	$P_{\text{i}1} = 0 \text{ dBmW}, P_{\text{i}2} = -40 \text{ dBmW}$ $P_{\text{in}2} = P_{\text{i}1} + 200 \text{ kHz}, V_{\text{DD}} = 3.6 \text{ V}$ $P_{\text{o}} = 7 \sim 34.5 \text{ dBmW} (V_{\text{GG}} = \text{adjust})$ $Z_{\text{G}} = Z_{\text{L}} = 50 \Omega$	$f_0 - 200 \text{ kHz}$	—	-30	—	dB
			$f_0 + 200 \text{ kHz}$	—	-30	—	dB
Switching time (Note5)	$t_{\text{r}}/t_{\text{f}}$	$V_{\text{DD}} = 3.6 \text{ V}$ $P_{\text{o}} = 0 \sim 34.5 \text{ dBmW} (V_{\text{GG}} = \text{adjust})$ $P_{\text{i}} = 0 \text{ dBmW}, Z_{\text{G}} = Z_{\text{L}} = 50 \Omega$	—	1.0	—	μs	
Noise Power	NRB	$f_0 = 915 \text{ MHz}, P_{\text{in}} = 0 \text{ dBmW}$ $P_{\text{o}} = 34.5 \text{ dBmW}, \text{RBW} = 100 \text{ kHz}$ $V_{\text{DD}} = 3.6 \text{ V}, V_{\text{GG}} = \text{adjust}$	$f_0 + 20 \text{ MHz}$	—	-82	—	dBmW
			$f_0 + 10 \text{ MHz}$	—	-78	—	dBmW
Load Mismatch	—	$P_{\text{i}} = 0 \text{ dBmW}, V_{\text{DD}} = 3.2 \sim 4.3 \text{ V}$ $P_{\text{o}} \leq 34.5 \text{ dBmW} (V_{\text{GG}} = \text{adjust}), Z_{\text{G}} = 50 \Omega$ VSWR LOAD 6:1 ALL PHASE	No degradation			—	
Stability	—	$P_{\text{i}} = 0 \text{ dBmW}, V_{\text{DD}} = 3.2 \sim 4.3 \text{ V}$ $V_{\text{GG}} = 0 \sim 2.5 \text{ V}, Z_{\text{G}} = 50 \Omega$ $P_{\text{o}} \leq 34.5 \text{ dBmW} (@Z_{\text{L}} = 50 \Omega)$ VSWR LOAD 6:1 ALL PHASE	All spurious output than 60 dB below desired signal			—	

Note4: Output power P_{o} is defined at the root point of the module output pin P_{o} .
The coefficient of output power loss in the P.C.B. output is showed as follows:
 $1/(S21)^2 = 1/(0.9809)^2 = 1.04$

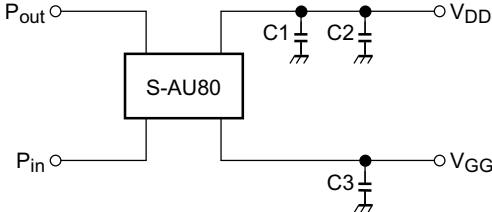
Note5: GSM pulse is applied to V_{GG} (1/8 duty 575 μs)

*: This transistor is the electrostatic sensitive device. Please handle with caution.

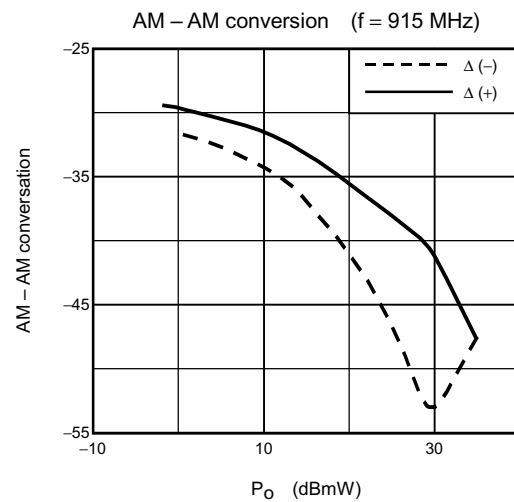
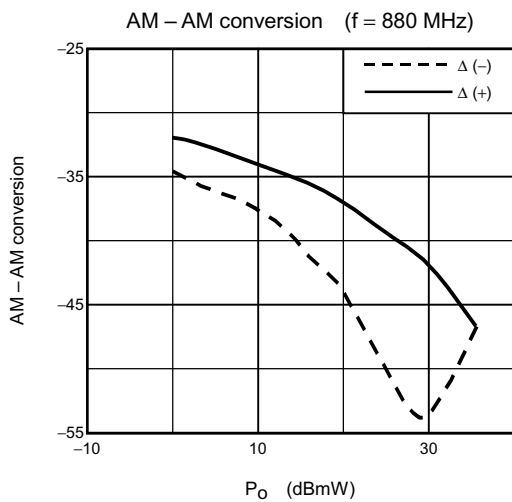
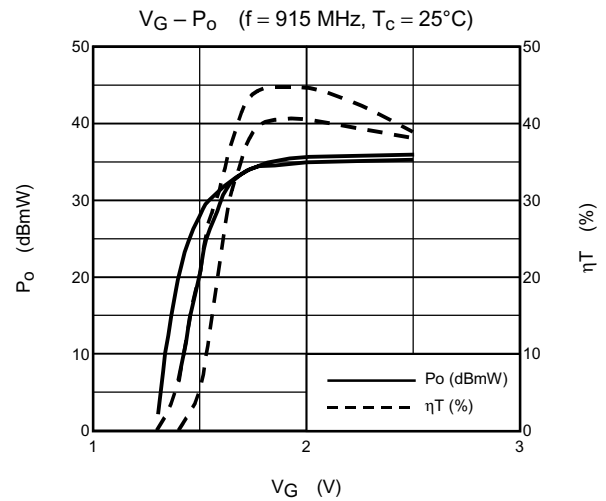
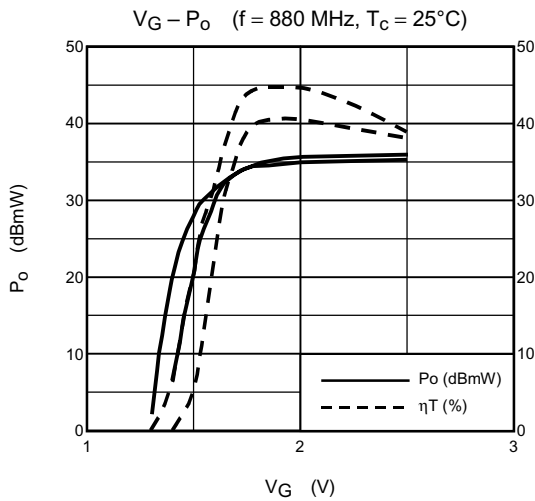
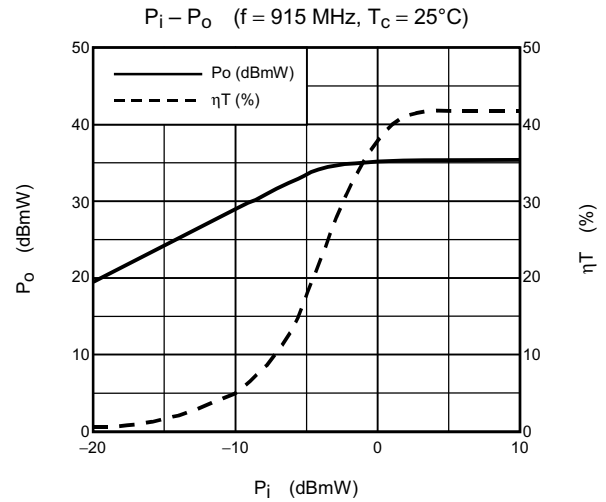
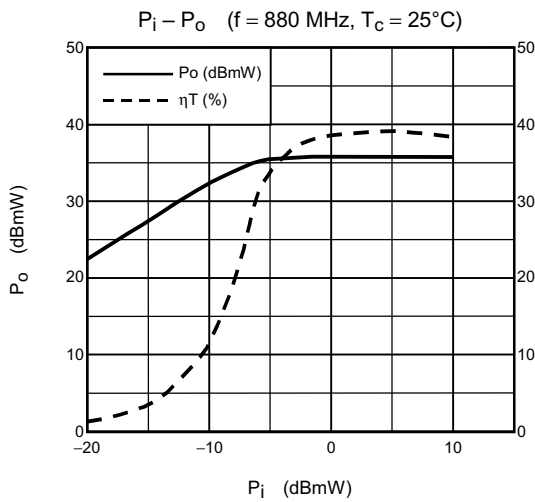
Schematic



Test Circuit



- C1: 10000 pF
- C2: 10 μ F
- C3: 100 pF



*: These are only typical curves and devices are not necessarily guaranteed at these curves.