

## 25-Ω OCTAL BUFFER/DRIVER WITH 3-STATE OUTPUTS

SDFS095B – NOVEMBER 1993 – REVISED JANUARY 1996

- 3-State Outputs Drive Bus Lines or Buffer-Memory Address Registers
- Package Options Include Plastic Small-Outline (DW) Packages and Standard Plastic (N) 300-mil DIPs

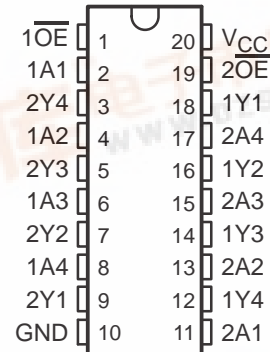
### description

This octal buffer and line driver is designed specifically to improve both the performance and density of 3-state memory address drivers, clock drivers, and bus-oriented receivers and transmitters.

The 25-Ω resistors in the lower output circuit reduce ringing and eliminate the need for external resistors.

The SN74F2244 is characterized for operation from 0°C to 70°C.

DW OR N PACKAGE  
(TOP VIEW)



FUNCTION TABLE  
(each buffer)

INPUTS		OUTPUT
$\overline{OE}$	A	Y
L	H	H
L	L	L
H	X	Z

Please be aware that an important notice concerning availability, standard warranty, and use in critical applications of Texas Instruments semiconductor products and disclaimers thereto appears at the end of this data sheet.

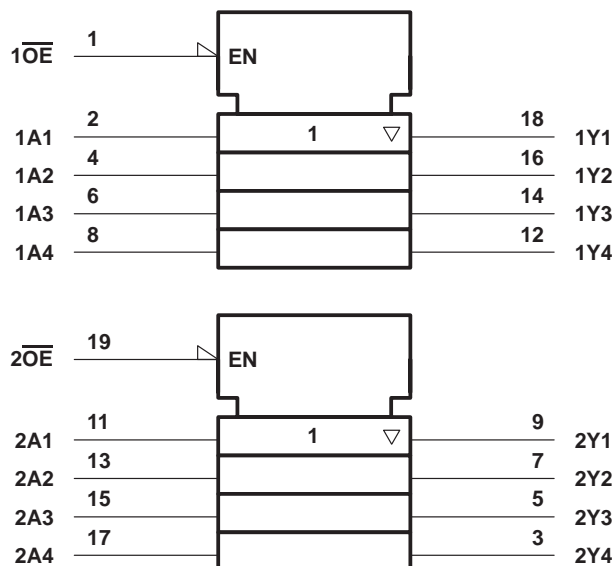
# SN74F2244

## 25-Ω OCTAL BUFFER/DRIVER

### WITH 3-STATE OUTPUTS

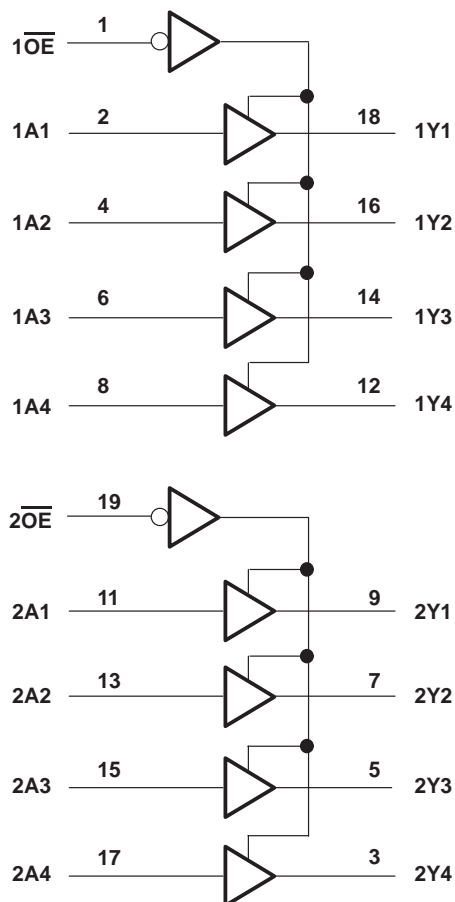
SDFS095B – NOVEMBER 1993 – REVISED JANUARY 1996

#### logic symbol†



† This symbol is in accordance with ANSI/IEEE Std 91-1984 and IEC Publication 617-12.

#### logic diagram (positive logic)



#### absolute maximum ratings over operating free-air temperature range (unless otherwise noted)‡

Supply voltage range, $V_{CC}$	-0.5 V to 7 V
Input voltage range, $V_I$ (see Note 1)	-1.2 V to 7 V
Input current range, $I_I$	-30 mA to 5 mA
Voltage range applied to any output in the disabled or power-off state, $V_O$	-0.5 V to 5.5 V
Voltage range applied to any output in the high state, $V_O$	-0.5 V to $V_{CC}$
Current into any output in the low state, $I_O$	30 mA
Operating free-air temperature range, $T_A$	0°C to 70°C
Storage temperature range, $T_{stg}$	-65°C to 150°C

‡ Stresses beyond those listed under "absolute maximum ratings" may cause permanent damage to the device. These are stress ratings only, and functional operation of the device at these or any other conditions beyond those indicated under "recommended operating conditions" is not implied. Exposure to absolute-maximum-rated conditions for extended periods may affect device reliability.

NOTE 1: The input voltage ratings may be exceeded if the input current ratings are observed.

# SN74F2244

## 25-Ω OCTAL BUFFER/DRIVER WITH 3-STATE OUTPUTS

SDFS095B – NOVEMBER 1993 – REVISED JANUARY 1996

### recommended operating conditions

		MIN	NOM	MAX	UNIT
$V_{CC}$	Supply voltage	4.5	5	5.5	V
$V_{IH}$	High-level input voltage	2			V
$V_{IL}$	Low-level input voltage			0.8	V
$I_{IK}$	Input clamp current			–18	mA
$I_{OH}$	High-level output current			–15	mA
$I_{OL}$	Low-level output current			12	mA
$T_A$	Operating free-air temperature	0		70	°C

### electrical characteristics over recommended operating free-air temperature range (unless otherwise noted)

PARAMETER		TEST CONDITIONS†		MIN	TYP†	MAX	UNIT
$V_{IK}$		$V_{CC} = 4.5\text{ V}$ ,	$I_I = -18\text{ mA}$			–1.2	V
$V_{OH}$		$V_{CC} = 4.5\text{ V}$ ,	$I_{OH} = -3\text{ mA}$	2.4	2.8		V
		$V_{CC} = 4.5\text{ V}$	$I_{OH} = -15\text{ mA}$	2	2.3		
		$V_{CC} = 4.75\text{ V}$ ,	$I_{OH} = -3\text{ mA}$	2.7			
$V_{OL}$		$V_{CC} = 4.5\text{ V}$ ,	$I_{OL} = 1\text{ mA}$		0.2	0.5	V
		$V_{CC} = 4.5\text{ V}$ ,	$I_{OL} = 12\text{ mA}$		0.5	0.75	
$I_I$		$V_{CC} = 5.5\text{ V}$ ,	$V_I = 0.5\text{ V}$			0.1	mA
$I_{OZH}$		$V_{CC} = 5.5\text{ V}$ ,	$V_O = 7\text{ V}$			50	μA
$I_{OZL}$		$V_{CC} = 5.5\text{ V}$ ,	$V_O = 2.7\text{ V}$			–50	μA
$I_{IH}$		$V_{CC} = 5.5\text{ V}$ ,	$V_I = 2.7\text{ V}$			20	μA
$I_{IL}$	Any $\overline{OE}$ input	$V_{CC} = 5.5\text{ V}$ ,	$V_I = 0.5\text{ V}$			–1	mA
	Any A input					–1.6	
$I_{OS}‡$		$V_{CC} = 5.5\text{ V}$ ,	$V_O = 0$	–100		–225	mA
$I_{CC}$		$V_{CC} = 5.5\text{ V}$ , Outputs open	Outputs high		40	60	mA
			Outputs low		60	90	
			Outputs disabled		60	90	

† All typical values are at  $V_{CC} = 5\text{ V}$ ,  $T_A = 25^\circ\text{C}$ .

‡ Not more than one output should be shorted at a time, and the duration of the short circuit should not exceed one second.

### switching characteristics (see Figure 1)

PARAMETER	FROM (INPUT)	TO (OUTPUT)	$V_{CC} = 5\text{ V}$ , $C_L = 50\text{ PF}$ , $R_1 = 500\ \Omega$ , $R_2 = 500\ \Omega$ , $T_A = 25^\circ\text{C}$		$V_{CC} = 4.5\text{ V TO } 5.5\text{ V}$ , $C_L = 50\text{ PF}$ , $R_1 = 500\ \Omega$ , $R_2 = 500\ \Omega$ , $T_A = \text{MIN TO MAX}\S$		UNIT
			MIN	MAX	MIN	MAX	
$t_{PLH}$	A	Y	1.5	7	1.5	7	ns
$t_{PHL}$			2.5	8	2	8	
$t_{PZH}$	$\overline{OE}$	Y	1.5	9	1	9.5	ns
$t_{PZL}$			2.5	11.5	2.5	12	
$t_{PHZ}$	$\overline{OE}$	Y	1.5	9	1	9.5	ns
$t_{PLZ}$			1.5	8.5	1.5	9.5	

§ For conditions shown as MIN or MAX, use the appropriate value specified under recommended operating conditions.

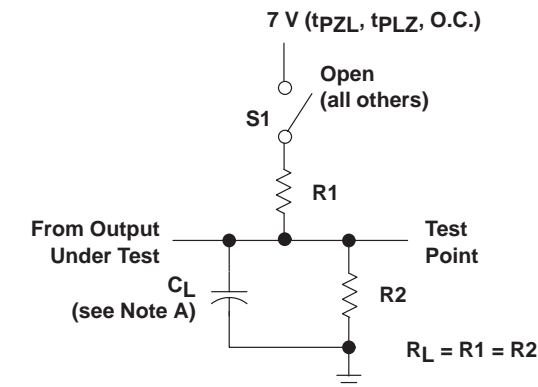
# SN74F2244

## 25-Ω OCTAL BUFFER/DRIVER

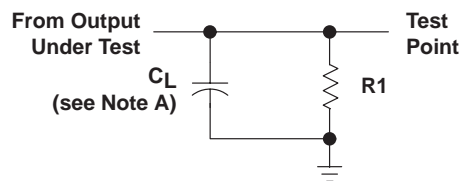
### WITH 3-STATE OUTPUTS

SDFS095B – NOVEMBER 1993 – REVISED JANUARY 1996

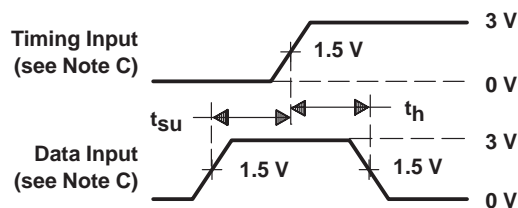
#### PARAMETER MEASUREMENT INFORMATION



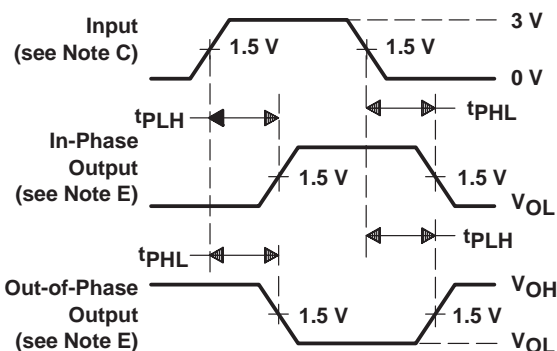
LOAD CIRCUIT FOR 3-STATE AND OPEN-COLLECTOR OUTPUTS



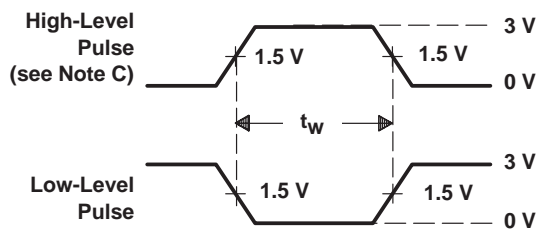
LOAD CIRCUIT FOR TOTEM-POLE OUTPUTS



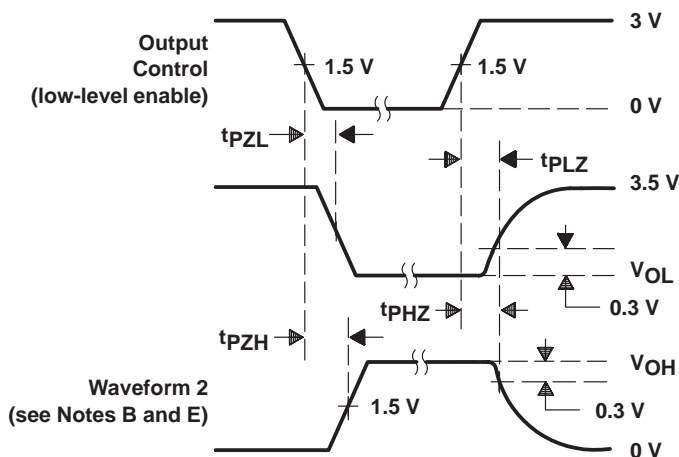
VOLTAGE WAVEFORMS SETUP AND HOLD TIMES



VOLTAGE WAVEFORMS PROPAGATION DELAY TIMES (see Note D)



VOLTAGE WAVEFORMS PULSE DURATION



VOLTAGE WAVEFORMS ENABLE AND DISABLE TIMES, 3-STATE OUTPUTS

- NOTES: A.  $C_L$  includes probe and jig capacitance.
- B. Waveform 1 is for an output with internal conditions such that the output is low except when disabled by the output control. Waveform 2 is for an output with internal conditions such that the output is high except when disabled by the output control.
- C. All input pulses are supplied by generators having the following characteristics:  $PRR \leq 1$  MHz,  $t_r = t_f \leq 2.5$  ns, duty cycle = 50%.
- D. When measuring propagation delay times of 3-state outputs, switch S1 is open.
- E. The outputs are measured one at a time with one transition per measurement.

Figure 1. Load Circuit and Voltage Waveforms

## **IMPORTANT NOTICE**

Texas Instruments and its subsidiaries (TI) reserve the right to make changes to their products or to discontinue any product or service without notice, and advise customers to obtain the latest version of relevant information to verify, before placing orders, that information being relied on is current and complete. All products are sold subject to the terms and conditions of sale supplied at the time of order acknowledgement, including those pertaining to warranty, patent infringement, and limitation of liability.

TI warrants performance of its semiconductor products to the specifications applicable at the time of sale in accordance with TI's standard warranty. Testing and other quality control techniques are utilized to the extent TI deems necessary to support this warranty. Specific testing of all parameters of each device is not necessarily performed, except those mandated by government requirements.

CERTAIN APPLICATIONS USING SEMICONDUCTOR PRODUCTS MAY INVOLVE POTENTIAL RISKS OF DEATH, PERSONAL INJURY, OR SEVERE PROPERTY OR ENVIRONMENTAL DAMAGE ("CRITICAL APPLICATIONS"). TI SEMICONDUCTOR PRODUCTS ARE NOT DESIGNED, AUTHORIZED, OR WARRANTED TO BE SUITABLE FOR USE IN LIFE-SUPPORT DEVICES OR SYSTEMS OR OTHER CRITICAL APPLICATIONS. INCLUSION OF TI PRODUCTS IN SUCH APPLICATIONS IS UNDERSTOOD TO BE FULLY AT THE CUSTOMER'S RISK.

In order to minimize risks associated with the customer's applications, adequate design and operating safeguards must be provided by the customer to minimize inherent or procedural hazards.

TI assumes no liability for applications assistance or customer product design. TI does not warrant or represent that any license, either express or implied, is granted under any patent right, copyright, mask work right, or other intellectual property right of TI covering or relating to any combination, machine, or process in which such semiconductor products or services might be or are used. TI's publication of information regarding any third party's products or services does not constitute TI's approval, warranty or endorsement thereof.