

●Characteristics

Parameter	Symbol	Typical	Unit
Effective printing width	—	112	mm
Dot pitch	—	0.125	mm
Total dot number	—	896	dots
Average resistance value	Rave	550	Ω
Applied voltage	V _H	24	V
Applied power	P _o	0.906	W / dot
Print cycle	SLT	0.98	ms
Pulse width	T _{ON}	0.265	ms
Maximum number of dots energized simultaneously	—	896	dots
Maximum clock frequency	—	10	MHz
Maximum roller diameter	—	20	mm
Running life / pulse life	—	50 / 10 ⁸	km / pulses
Operating temperature	—	5~45	°C

●Pin assignments

HIROSE

No.	Circuit	No.	Circuit
1	V _{DD}	2	BEO
3	GND	4	DI4
5	DI3	6	CLK
7	\overline{LA}	8	GND
9	GND	10	DI2
11	DI1	12	GND
13	V _{DD}	14	$\overline{STB2}$
15	$\overline{STB1}$	16	TM
17	TM	18	SENS1
19	SENS2	20	SENS3

JST

No.	Circuit
1	VH
2	VH
3	VH
4	GND
5	GND
6	GND

● Timing chart

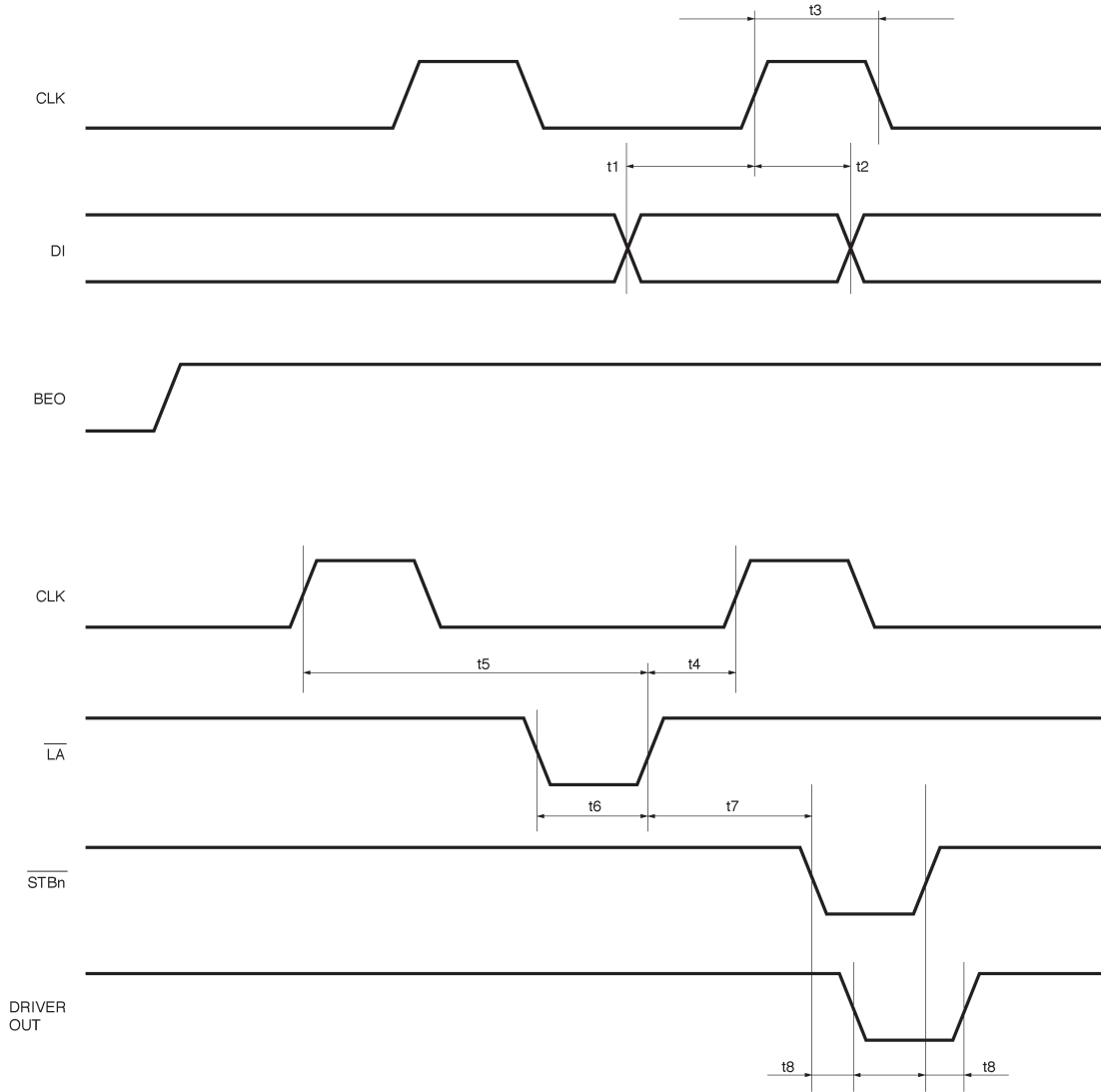
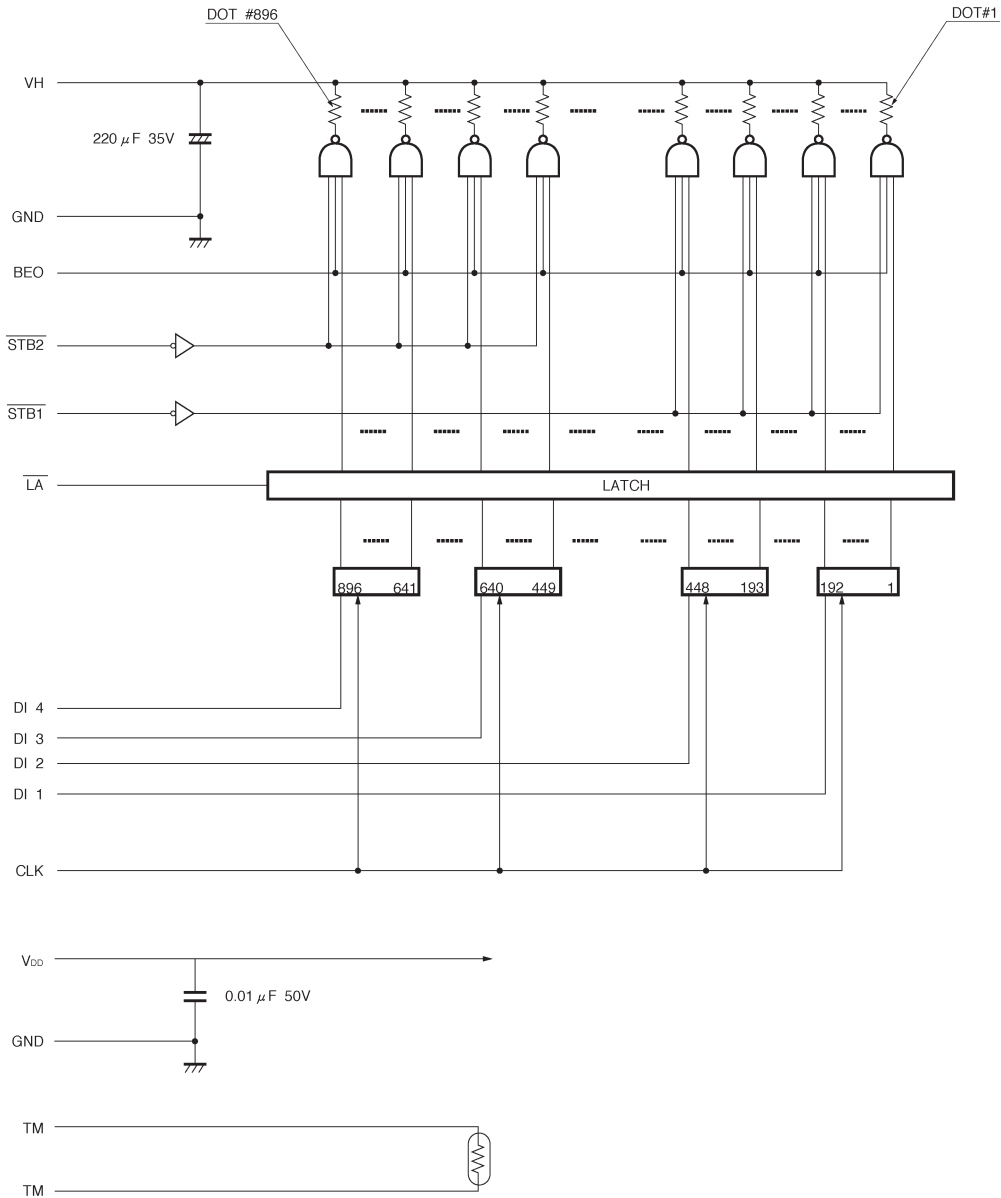


Fig.1

●Equivalent circuit



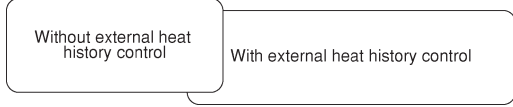
DI No.	DOT No.
DI 4	896~641
DI 3	640~449
DI 2	448~193
DI 1	192~ 1

STB No.	DOT No.
STB 2	896~449
STB 1	448~ 1

Fig. 2

●Supported speeds chart

Inch / second [IPS]											
0	1	2	3	4	5	6	7	8	9	10	OVER



●Electrical characteristic curves

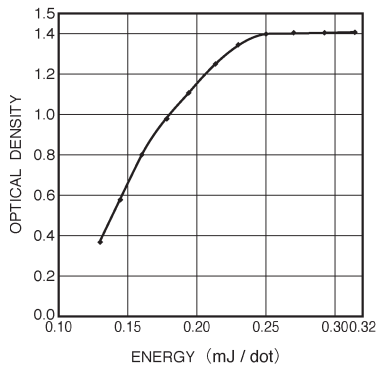


Fig. 3 Representative density curve

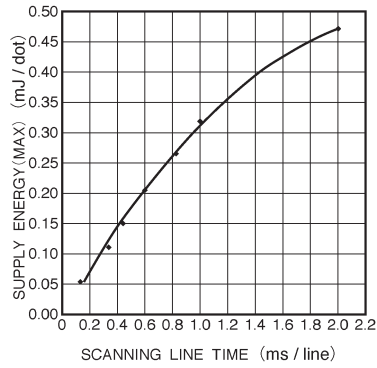


Fig. 4 Maximum energy curve

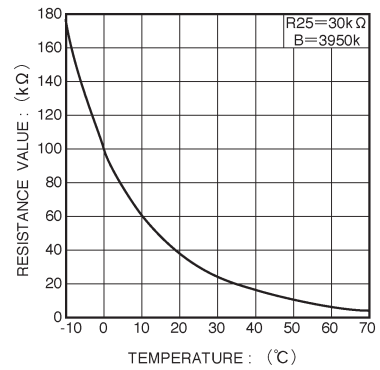


Fig. 5 Thermistor curve