

Panasonic

For optical disc drives

IEEE1394 Interface LSI MN864411GT

Overview

The MN864411GT is an IEEE1394 interface LSI for optical disc drives. This LSI incorporates an IEEE1394 physical layer circuit and a bridge circuit that is used for data conversion between ATAPI and IEEE1394 interfaces.

This LSI makes it possible to connect optical disc drives, such as DVDs, to IEEE1394 interfaces as promising interfaces for PC peripheral devices in a space-saving manner. Furthermore, the LSI is applicable to a variety of PC peripheral devices, such as printers and DSCs.

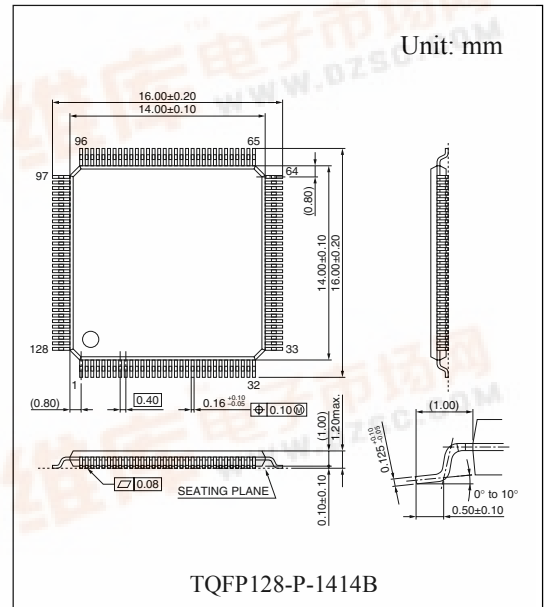
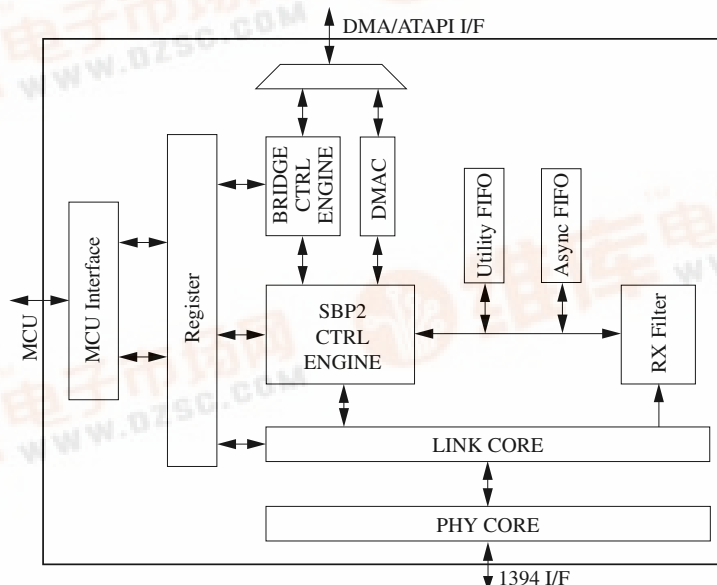
Feature

- Directly connecting to the host PC at the maximum data transfer rate of 400 Mbits per second.
- Incorporates a link layer circuit conforming to IEEE1394a standards, SBP2 processing circuit, and 2-port physical layer.
- Converts the ATAPI interface data of optical disc drives into IEEE1394 data.
- Incorporates hardware that executes protocols conforming to ATA-66 (Ultra DMA mode 4) standards at high speed.
- Supports transfer rates of S400, S200, and S100.
- Supply voltage: 3.3 V (I/O) / 2.5V (Internal)
- 128-pin QFP package

Applications

- Optical disc drives, DSCs, printers

Block diagram



The products and specification are subject to change without any notice. Please ask for the latest Product Standards to guarantee the satisfaction of your product requirements.



Semiconductor Company, Matsushita Electric Industrial Co., Ltd.

1. Kofari Yakemachi, Nagaokakyo, Kyoto, 617-8520 Japan

Tel. (075)951-8151

http://www.panasonic.co.jp/semicon

New publication, effective from Oct.1 2001.