

COLLECTOR CURRENT = 5 AMPS NPN TYPES—Continued

Device No	Case	VCBO Volts	VCEO (sus) Volts	VEBO Volts	hFE		VCE	IC	VCE (sat)	VBE (sat)	@ IC	@ IB	θ_{JC} °C/W	F _t MHz
					Min	Max								
2N5002	TO-111/1	100	80	6	30	90	5	2.5	1.5	2.2	5	.5	1	60
2N5004	TO-111/1	100	80	6	70	200	5	2.5	1.5	2.2	5	.5	1	70
2N5074	TO-111/1	200	200	6	30	110	5	.5	2	2.2	3	.3	3.33	60
2N5075	TO-111/1	200	200	6	90	250	5	.5	2	2.2	3	.3	3.33	60
2N5076	TO-111/1	250	250	6	30	110	5	.5	2	2.2	3	.3	3.33	60
2N5077	TO-111/1	250	250	6	90	250	5	.5	2	2.2	3	.3	3.33	60
2N5148	TO-5	100	80	6	30	90	5	1	.85	1.5	2	.2	25	50
2N5150	TO-5	100	80	6	70	200	5	1	.85	1.5	2	.2	25	60
2N5284	TO-111/1	120	100	6	30	90	5	2.5	1.5	2.2	5	.5	3	60
2N5285	TO-111/1	120	100	6	70	200	5	2.5	1.5	2.2	5	.5	3	60
2N5336	TO-39	80	80	6	30	120	2	2	1.2	1.8	5	.5	29	60
2N5337	TO-39	80	80	6	60	240	2	2	1.2	1.8	5	.5	20	60
2N5338	TO-39	100	100	6	30	120	2	2	1.2	1.8	5	.5	20	60
2N5339	TO-39	100	100	6	60	240	2	2	1.2	1.8	5	.5	20	60
2N5427	TO-66	80	80	6	30	120	2	2	.7	1.2	2	.2	4	60
2N5428	TO-66	80	80	6	60	240	2	2	.7	1.2	2	.2	4	60
2N5429	TO-66	100	100	6	30	120	2	2	.7	1.2	2	.2	4	60
2N5430	TO-66	100	100	6	60	240	2	2	.7	1.2	2	.2	4	60
2N5541	TO-5	175	130	8	30	90	5	5	.6	1.5	5	.5	25	60
2N5598	TO-66	80	60	6	70	200	5	1	.85	1.5	2	.2	5	60
2N5600	TO-66	100	80	6	30	90	5	1	.85	1.5	2	.2	5	60
2N5602	TO-66	100	80	6	70	200	5	1	.85	1.5	2	.2	5	60
2N5604	TO-66	120	100	6	30	90	5	1	.85	1.5	2	.2	6	60
2N5606	TO-66	80	60	6	70	200	5	2.5	1.5	2.2	5	.5	5	60
2N5608	TO-66	100	80	6	30	90	5	2.5	1.5	2.2	5	.5	5	60
2N5610	TO-66	100	80	6	70	200	5	2.5	1.5	2.2	5	.5	5	60
2N5612	TO-66	120	100	6	30	90	5	2.5	1.5	2.2	5	.5	5	60
2N5614	TO-3	80	60	6	70	200	5	2.5	1.5	2.2	5	.5	3	50
2N5616	TO-3	100	80	6	30	90	5	2.5	1.5	2.2	5	.5	3	50
2N5618	TO-3	100	80	6	70	200	5	2.5	1.5	2.2	5	.5	3	50
2N5620	TO-3	120	100	6	30	90	5	2.5	1.5	2.2	5	.5	3	50
2N5664*	TO-66	250	200	6	40	120	5	1	.4	1.2	3	.3	3.33	60
2N5665*	TO-66	400	300	6	25	75	5	1	.4	1.2	3	.6	3.33	60
2N5666*	TO-5	250	200	6	40	120	5	1	.4	1.2	3	.3	20	60
2N5667*	TO-5	400	300	6	25	75	5	1	.4	1.2	3	.6	20	60
2N5729	TO-5	100	80	5	30	300	2	2	1.5	1.5	5	.5	20	60
2N5804	TO-3	300	225	6	10	100	4	5	2	2	5	.5	1.6	15
2N5805	TO-3	375	300	6	10	100	4	5	2	2	5	.5	1.6	15
2N5838	TO-3	275	250	6	8	40	2	3	1	2	3	.375	1.75	5
2N5839	TO-3	300	275	6	10	50	3	2	1.5	2	2	.2	1.75	5
2N5840	TO-3	375	350	6	10	50	3	2	1.5	2	2	.2	1.75	5
2N5970	TO-3	80	80	5	20	100	4	1.5	2	2.5	5	1.25	2	4
2N6233	TO-66	250	225	6	25	125	5	1	.5	1	1	.1	3.5	20
2N6234	TO-66	300	275	6	25	125	5	1	.5	1	1	.1	3.5	20
2N6235	TO-66	350	325	6	25	125	5	1	.5	1	1	.1	3.5	20

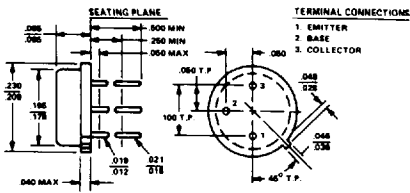
COLLECTOR CURRENT = 5 AMPS PNP TYPES

Device No	Case	VCBO Volts	VCEO (sus) Volts	VEBO Volts	hFE		VCE	IC	VCE (sat)	VBE (sat)	@ IC	@ IB	θ_{JC} °C/W	F _t MHz
					Min	Max								
2N3021	TO-3	30	30	4	20	60	2	1	1.5	1.5	3	.3	2.3	60
2N3022	TO-3	45	45	4	20	60	2	1	1.5	1.5	3	.3	2.3	60
2N3023	TO-3	60	60	4	20	60	2	1	1.5	1.5	3	.3	2.3	60
2N3024	TO-3	30	30	4	50	180	2	1	1	1.5	3	.3	2.3	60
2N3025	TO-3	45	45	4	50	180	2	1	1	1.5	3	.3	2.3	60
2N3026	TO-3	60	60	4	50	180	2	1	1	1.5	3	.3	2.3	60
2N3163	TO-61	40	40	10	12	36	3	1	.75	1.8	1	.14	2	60
2N3164	TO-61	60	60	10	12	36	3	1	.75	1.8	1	.14	2	60
2N3165	TO-61	80	80	10	12	36	3	1	.75	1.8	1	.14	2	60
2N3166	TO-61	100	100	10	12	36	3	1	.75	1.8	1	.14	2	60

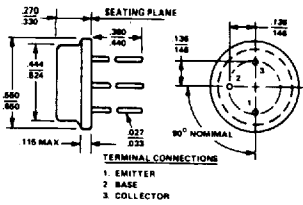
*(JTX & JTXV)

PHYSICAL DIMENSIONS - PACKAGES

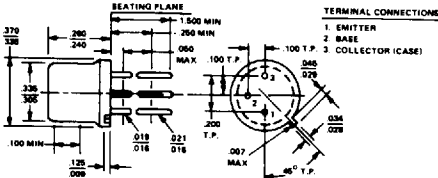
TO-46



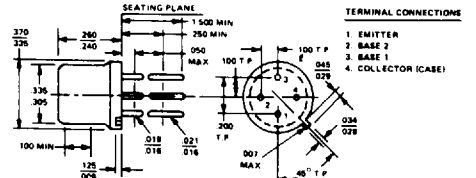
TO-8



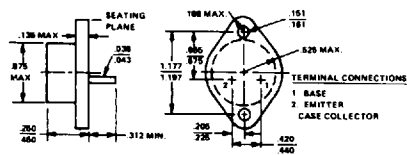
TO-5



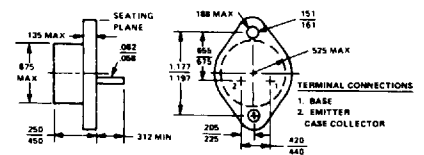
TO-33



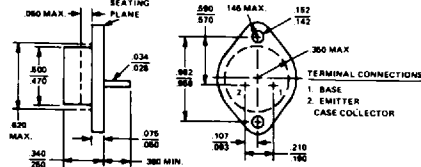
TO-3



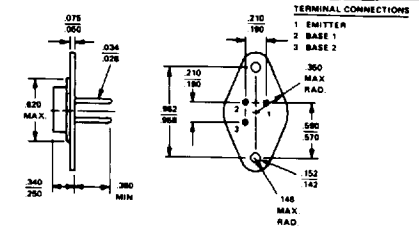
TO-3 (60 mil pins)



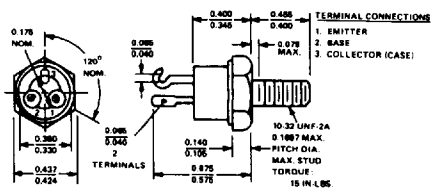
TO-66



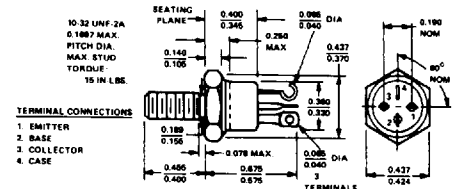
3 PIN TO-66



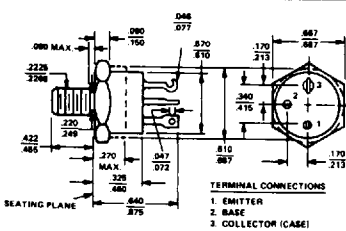
TO-111



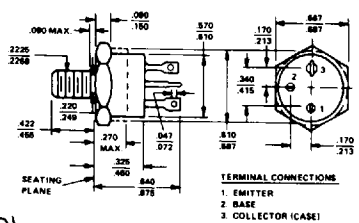
TO-111 (ISOLATED)



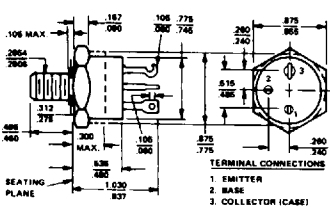
TO-61



TO-61 (ISOLATED)



TO-63



TO-114

