

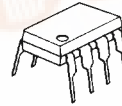


PRECISION VOLTAGE COMPARATOR

■ GENERAL DESCRIPTION

The NJM311 is a voltage comparator that has low input currents. It is also designed to operate covering a wider range of supply voltages from Standard $\pm 15V$ op amp supplies down to the single 5V supply used for IC logic. Its output is compatible with RTL, DTL and TTL as well as MOS circuits. Further more, it can drive lamps or relays, switching voltages up to 40V at currents as high as 50mA. Offset balancing is provided, and the outputs can be OR wired.

■ PACKAGE OUTLINE



NJM311D

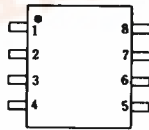


NJM311M

■ FEATURES

- Operating Voltage (+5V~+36V)
- Single Supply Operation
- Single Circuit
- With V_{IO} Trim Terminal
- Response Time (200ns typ.)
- Package Outline DIP8, DMP8
- Bipolar Technology

■ PIN CONFIGURATION

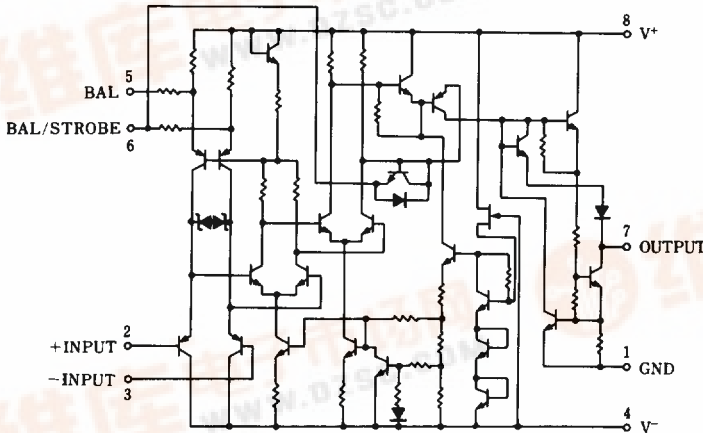


NJM311D
NJM311M

PIN FUNCTION

1. GND
2. +INPUT
3. -INPUT
4. V-
5. BAL
6. BAL/STROBE
7. OUTPUT
8. V+

■ EQUIVALENT CIRCUIT





■ ABSOLUTE MAXIMUM RATINGS

(Ta=25°C)

PARAMETER	SYMBOL	RATINGS	UNIT
Supply Voltage	V ⁺ /V ⁻	36(±18)	V
Output to Negative Supply Voltage	V7-4	40	V
Ground to Negative Supply Voltage	V1-4	30	V
Differential Input Voltage	V _{ID}	±30	V
Input Voltage	V _{IN}	±15 (note 1)	V
Power Dissipation	P _D	(DIP8) 500	mW
		(DMP8) 300	mW
Operating Temperature Range	T _{opr}	-20 ~ +75	°C
Storage Temperature Range	T _{stg}	-40 ~ +125	°C

(note) For supply voltage less than ±15V, the absolute input voltage is equal to the supply voltage.

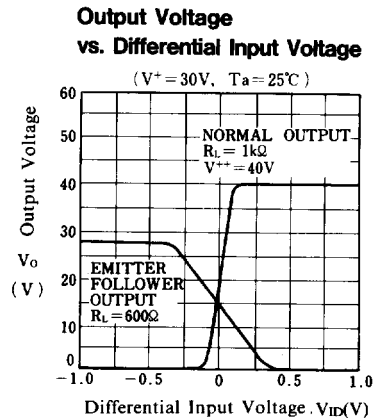
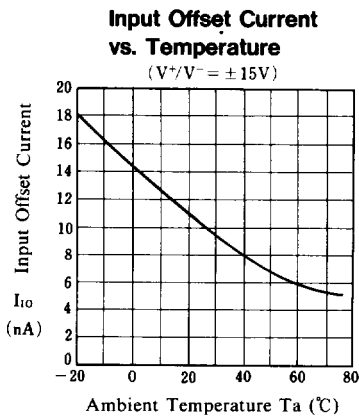
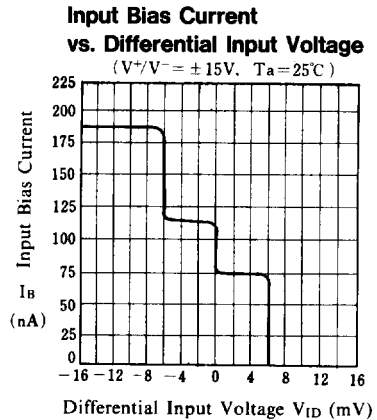
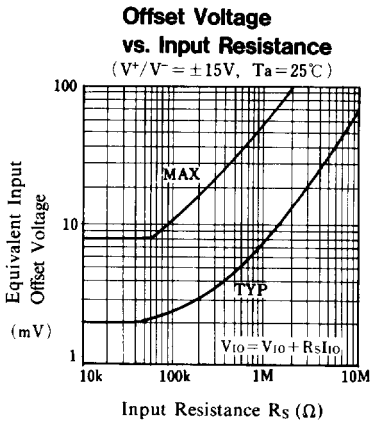
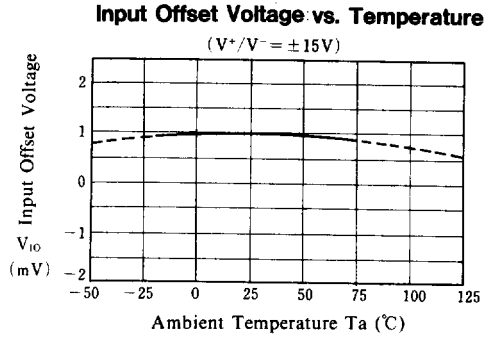
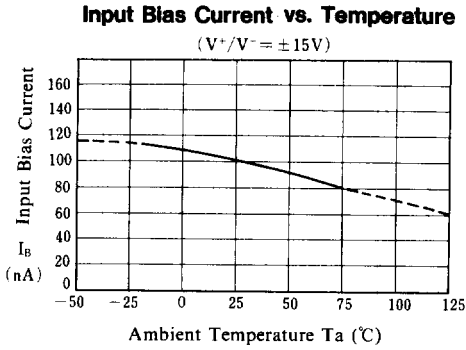
■ ELECTRICAL CHARACTERISTICS

(V⁺/V⁻ = ±15V, Ta=25°C)

PARAMETER	SYMBOL	TEST CONDITION	MIN.	TYP.	MAX.	UNIT
Input Offset Voltage	V _{IO}	R _S ≤ 50kΩ	—	2.0	7.5	mV
Input Offset Current	I _{IO}		—	6.0	50	nA
Input Bias Current	I _B		—	100	250	nA
Voltage Gain	A _V		—	106	—	dB
Response Time	t _R		—	200	—	ns
Saturation Voltage	V _{SAT}	V _{IN} ≤ -10mV, I _O = 50mA	—	0.75	1.5	V
Strobe ON Current	I _{STR}		—	3.0	—	mA
Output Leakage Current	I _{LEAK}	V _{IN} ≥ 10mV, V _O = 35V	—	0.2	50	nA
Input Common Mode Voltage Range	V _{ICM}		—	±14	—	V
Positive Quiescent Current	I ⁺		—	5.1	7.5	mA
Negative Quiescent Current	I ⁻		—	4.1	5.0	mA



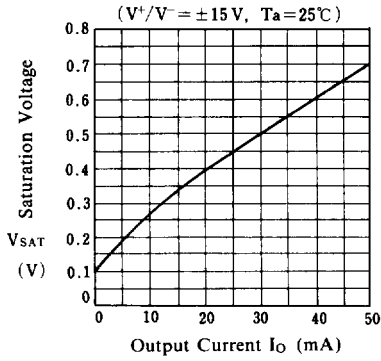
■ TYPICAL CHARACTERISTICS



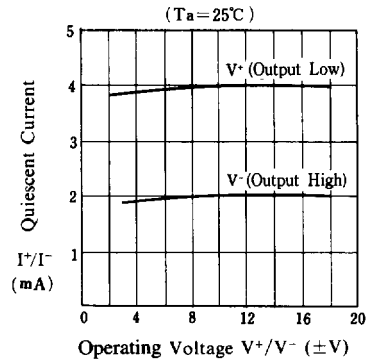


■ TYPICAL CHARACTERISTICS

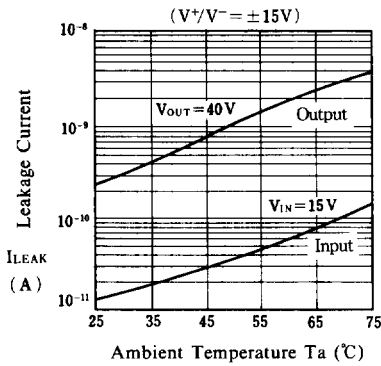
Saturation Voltage vs. Output Current



Quiescent Current vs. Operating Voltage



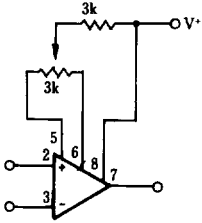
leakage Current vs. Temperature



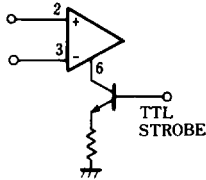


■ TYPICAL APPLICATIONS

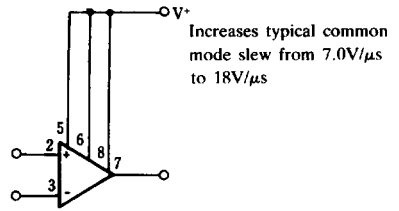
Offset Null Circuit



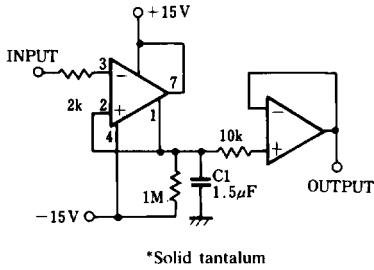
Strobing



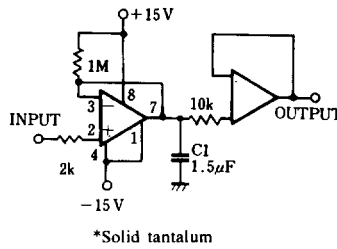
Increasing Input Stage Current



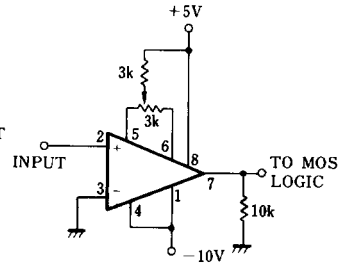
Positive Peak Detector



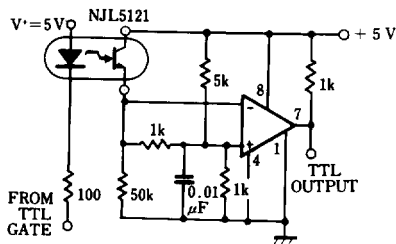
Negative Peak Detector



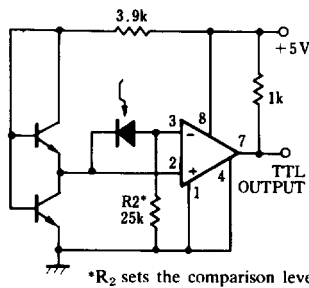
Zero Crossing Detector driving MOS Logic



Digital Transmission Isolator



Precision Photodiode Comparator



Relay Driver with Strobe

