



SAW Components

Data Sheet B9016





SAW Components

B9016

Low-Loss Filter

1575,42 MHz

Data Sheet

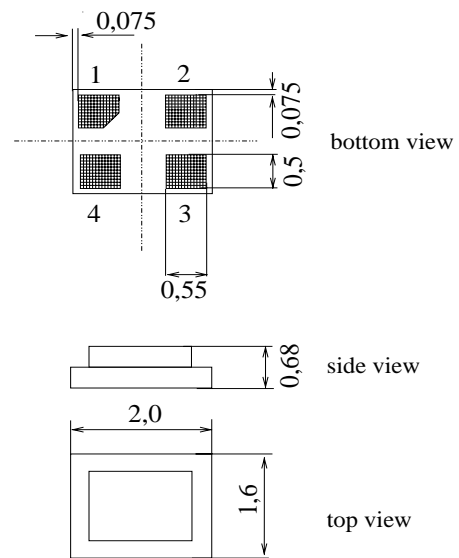
Features

- Low loss RF filter for GPS receivers
- Unbalanced to unbalanced operation
- Low amplitude ripple
- Package for **Surface Mounted Technology (SMT)**

Terminals

- Ni, gold-plated

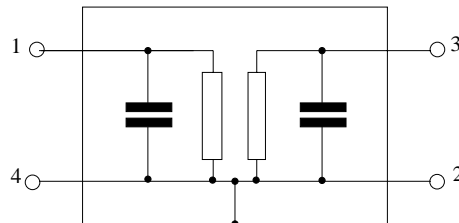
Chip Sized SAW Package DCS4F



Dimensions in mm, approx. weight 0,007g.

Pin configuration

- 1 Input
- 3 Output
- 2,4 Ground



Type	Ordering code	Marking and Package according to	Packing according to
B9016	B39162-B9016-E610	C61157-A7-A113	F61074-V8152-Z000

Electrostatic Sensitive Device (ESD)

Maximum ratings

Operable temperature range	T	- 30/+ 85	°C	machine model, 10 pulses
Storage temperature range	T_{stg}	- 40/+ 85	°C	
DC voltage	V_{DC}	3	V	
ESD voltage	V_{ESD}^*	50*	V	
Input power max. 1573,42 ... 1577,42 MHz	P_{IN}	3	dBm	
50,0...1460 and 1710 ... 4000 MHz	P_{IN}	13	dBm	

* acc. to JESD22-A115A (Machine Model), 10 negative & 10 positive pulses



SAW Components

B9016

Low-Loss Filter

1575,42 MHz

Data Sheet

Characteristics

Operating temperature range: $T_A = -30 \dots +85 \text{ }^\circ\text{C}$
 Terminating source impedance: $Z_S = 50 \text{ } \Omega \text{ unbal.}$
 Terminating load impedance: $Z_L = 50 \text{ } \Omega \text{ unbal.}$

			min.	typ.	max.	
Nominal frequency	f_N		—	1575,42	—	MHz
Maximum insertion attenuation	α_{\max}	1574,67MHz ... 1576,17 MHz	—	1,4	2,0	dB
Amplitude ripple in passband (p-p)	$\Delta\alpha$	1574,67MHz ... 1576,17 MHz	—	0,05	0,3	dB
Phase linearity		1574,67MHz ... 1576,17 MHz	—	0,05	0,3	deg
Attenuation	α					
		0,1 MHz ... 915,0 MHz	35	42	—	dB
		915,0 MHz ... 1400,0 MHz	30	42	—	dB
		1648,0 MHz ... 1698,0 MHz	36	39	—	dB
		1698,0 MHz ... 1850,0 MHz	28	46	—	dB
		1850,0 MHz ... 1980,0 MHz	35	46	—	dB
		1980,0 MHz ... 2245,0 MHz	25	36	—	dB
		2245,0 MHz ... 3555,0 MHz	25	50	—	dB
		5275,0 MHz ... 5535,0 MHz	5	45	—	dB
VSWR		1574,67MHz ... 1576,17 MHz	—	1,3	1,8	



SAW Components

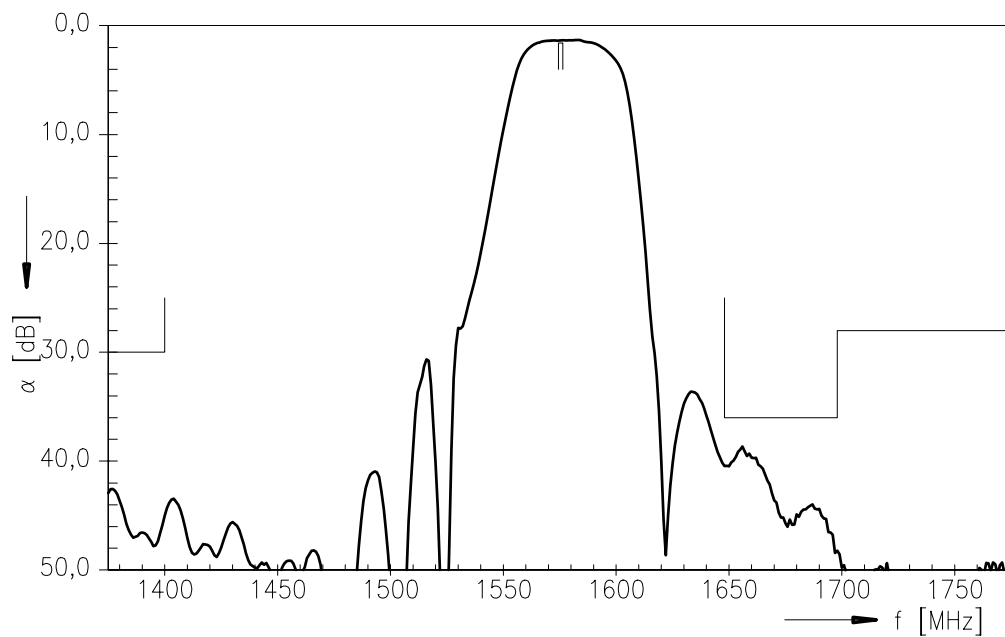
B9016

Low-Loss Filter

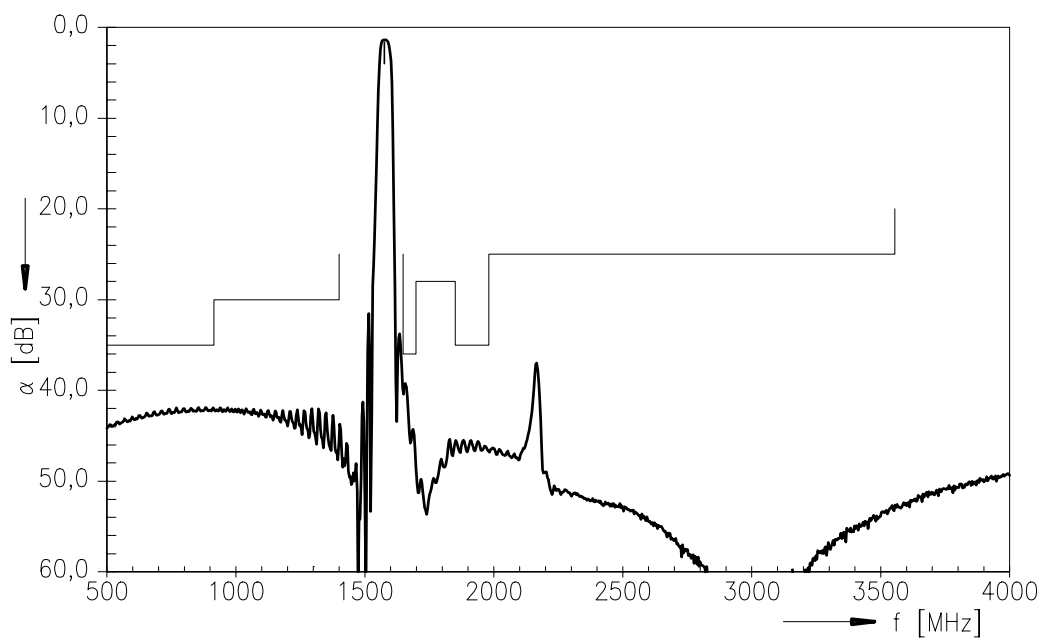
1575,42 MHz

Data Sheet

Transfer function (pass band) :



Transfer function :





SAW Components

B9016

Low-Loss Filter

1575,42 MHz

Data Sheet

Published by EPCOS AG

SAW MC WT, P.O. Box 80 17 09, 81617 Munich, GERMANY

TEL ++49 89 636 09, FAX ++49 89 636 2 26 89

© EPCOS AG 2004. Reproduction, publication and dissemination of this brochure and the information contained therein without EPCOS' prior express consent is prohibited.

Purchase orders are subject to the General Conditions for the Supply of Products and Services of the Electrical and Electronics Industry recommended by the ZVEI (German Electrical and Electronic Manufacturers' Association), unless otherwise agreed.

This brochure replaces the previous edition.

For questions on technology, prices and delivery please contact the Sales Offices of EPCOS AG or the international Representatives.

Due to technical requirements components may contain dangerous substances. For information on the type in question please also contact one of our Sales Offices.



中发网 WWW.ZFA.CN

全球最大的PDF中文下载站



中发网
www.zfa.cn

PDF 资料下载尽在中发网