



SAW Components

Data Sheet B7828

Data Sheet

EPCOS



SAW Components

B7828

Low-Loss Filter for Mobile Communication

1489,0 MHz

Data Sheet



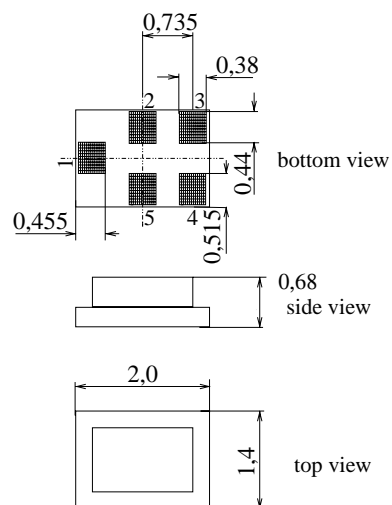
Chip sized SAW package

Features

- Low-loss RF filter for PDC system, receive path
- Small insertion attenuation
- Low amplitude ripple
- Package for Surface Mounted Technology (SMT)
- Chip Sized SAW Package (CSSP)

Terminals

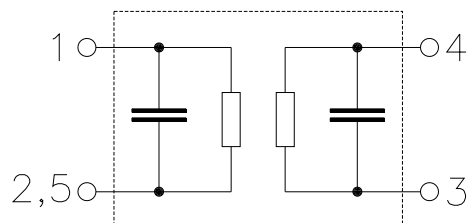
- Gold-plated Ni



Dimensions in mm, approx. weight 0,007 g

Pin configuration

- | | |
|---------|----------------|
| 1 | Input |
| 4, | Output |
| 2, 3, 5 | To be grounded |



Type	Ordering code	Marking and Package according to	Packing according to
B7828	B39152-B7828-C710	C61157-A7-A111	F61074-V8151-Z000

Electrostatic Sensitive Device (ESD)

Maximum ratings

Operating temperature range	T	- 20/+ 85	°C	
Storage temperature range	T_{stg}	- 40/+ 85	°C	
DC voltage	V_{DC}	3	V	
Source power	P_S	13	dBm	duty cycle 1:3, source and load impedance 50 Ω



SAW Components

B7828

Low-Loss Filter for Mobile Communication

1489,0 MHz

Data Sheet



Characteristics

Operating temperature range: $T = -20$ to $+85$ °C

Terminating source impedance: $Z_S = 50 \Omega$

Terminating load impedance: $Z_L = 50 \Omega$

		min.	typ.	max.	
Center frequency	f_C	—	1489,0	—	MHz
Maximum insertion attenuation	α_{\max}				
1477,0 ... 1501,0 MHz		—	1,4	2,5	dB
1477,0 ... 1501,0 MHz*)		—	1,4	1,9	dB
Amplitude ripple (p-p)	$\Delta\alpha$				
1477,0 ... 1501,0 MHz		—	0,3	1,0	dB
Absolute attenuation	α				
1217,0 ... 1241,0 MHz		30	36	—	dB
1217,0 ... 1241,0 MHz*)		32	36	—	dB
1347,0 ... 1371,0 MHz		25	30	—	dB
1412,0 ... 1436,0 MHz		19	23	—	dB
1429,0 ... 1453,0 MHz		10	15	—	dB
1542,0 ... 1566,0 MHz		13	18	—	dB
1607,0 ... 1631,0 MHz		22	27	—	dB
1737,0 ... 1761,0 MHz		28	33	—	dB

*) $T = 25$ °C



SAW Components

B7828

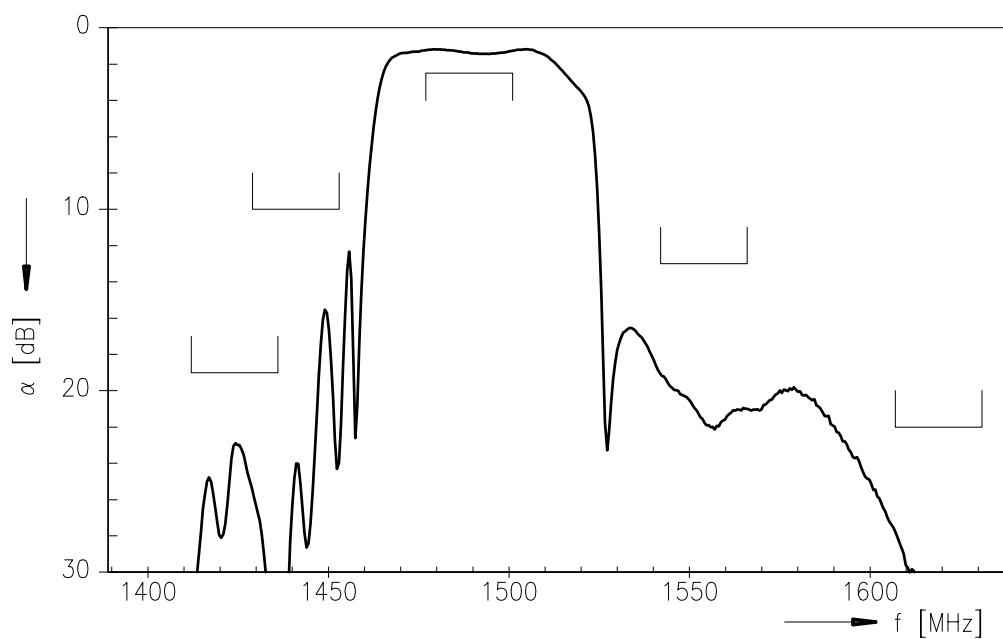
Low-Loss Filter for Mobile Communication

1489,0 MHz

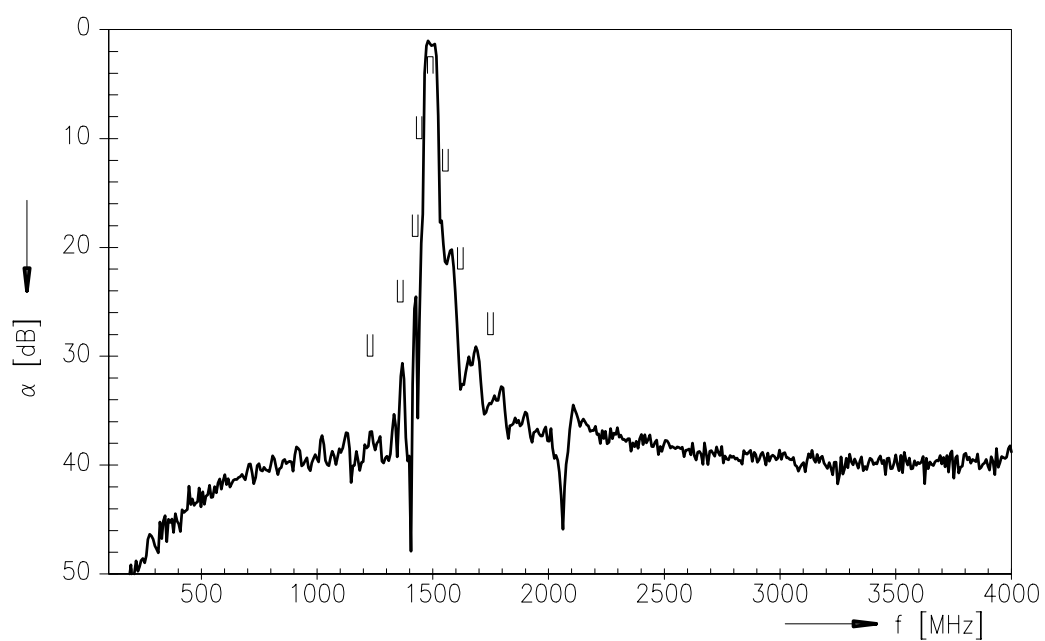
Data Sheet



Transfer function (pass band) :



Transfer function :





SAW Components		B7828
Low-Loss Filter for Mobile Communication		1489,0 MHz
Data Sheet		

Published by EPCOS AG

SAW MC WT, P.O. Box 80 17 09, 81617 Munich, GERMANY

TEL ++49 89 636 09, FAX ++49 89 636 2 26 89

© EPCOS AG 2002. Reproduction, publication and dissemination of this brochure and the information contained therein without EPCOS' prior express consent is prohibited.

Purchase orders are subject to the General Conditions for the Supply of Products and Services of the Electrical and Electronics Industry recommended by the ZVEI (German Electrical and Electronic Manufacturers' Association), unless otherwise agreed.

This brochure replaces the previous edition.

For questions on technology, prices and delivery please contact the Sales Offices of EPCOS AG or the international Representatives.

Due to technical requirements components may contain dangerous substances. For information on the type in question please also contact one of our Sales Offices.



中发网 WWW.ZFA.CN

全球最大的PDF中文下载站



中发网
www.zfa.cn

PDF 资料下载尽在中发网