

VFM Step-up DC/DC Converter

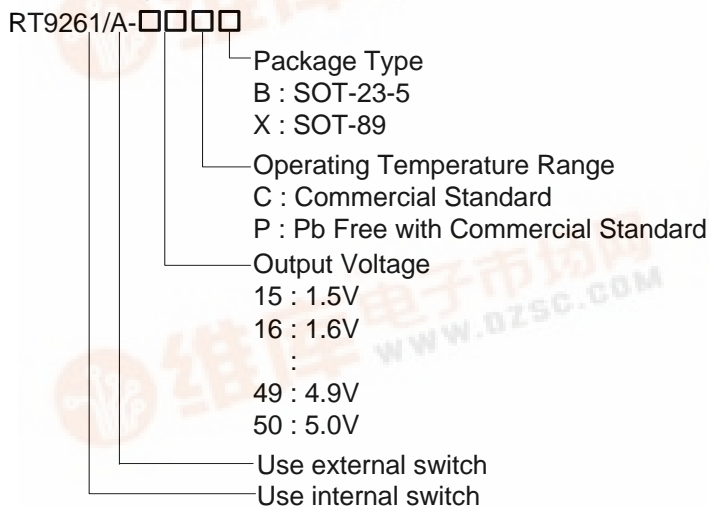
General Description

The RT9261 Series are VFM Step-up DC/DC ICs with ultra low supply current by CMOS process and suitable for use with battery-powered instruments.

The RT9261 IC consists of an oscillator, a VFM control circuit, a driver transistor (LX switch), a reference voltage unit, an error amplifier, resistors for voltage detection, and a LX switch protection circuit. A low ripple and high efficiency step-up DC/DC converter can be constructed of this RT9261 IC with only three external components.

The RT9261A IC provides with a drive pin (EXT) for an external transistor, so that a power transistor can be externally applied. Therefore, the RT9261A IC is recommended for applications where large currents are required. EN pin enables circuit to set the standby supply current at a maximum of 0.5μA.

Ordering Information



Note :

RichTek Pb-free products are :

- RoHS compliant and compatible with the current requirements of IPC/JEDEC J-STD-020.
- Suitable for use in SnPb or Pb-free soldering processes.
- 100% matte tin (Sn) plating.

Features

- Minimal Number of External Components (Only an Inductor, a Diode, and a Capacitor)
- Ultra Low Input Current (5μA at Switch Off)
- ± 2% High Output Voltage Accuracy
- Low Ripple and Low Noise
- Low Start-up Voltage, 0.85V at 1mA
- 75% Efficiency with Low Cost Inductor
- +50 ppm/ °C Low Temperature-Drift
- SOT-89 and SOT-23-5 Small Packages
- RoHS Compliant and 100% Lead (Pb)-Free

Applications

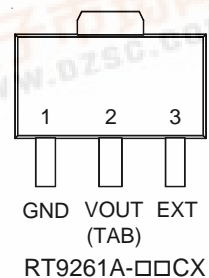
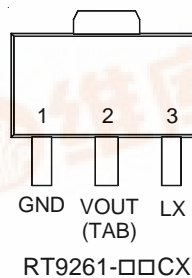
- Power source for battery-powered equipment
- Power source for cameras, camcorders, VCRs, PDAs, pagers, electronic data banks, and hand-held communication equipment
- Power source for applications, which require higher voltage than that of batteries used in the appliances

Marking Information

For marking information, contact our sales representative directly or through a RichTek distributor located in your area, otherwise visit our website for detail.

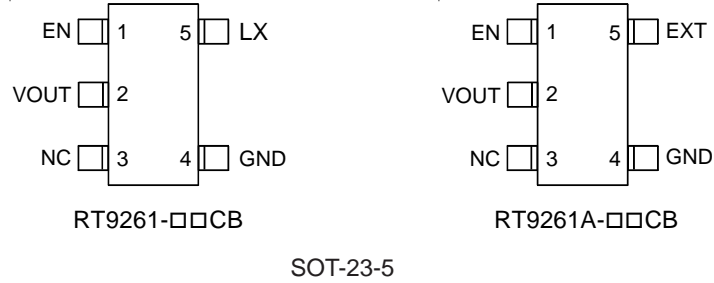
Pin Configurations

(TOP VIEW)



SOT-89





Typical Application Circuit

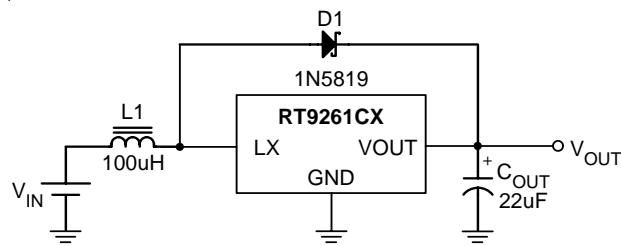


Figure 1

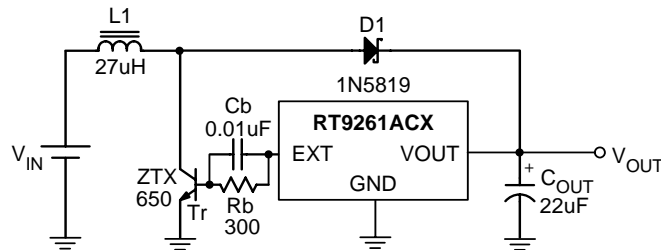


Figure 2

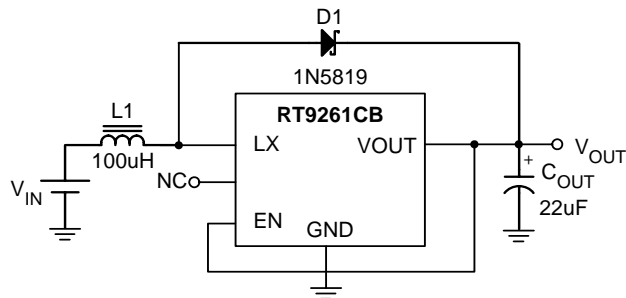


Figure 3

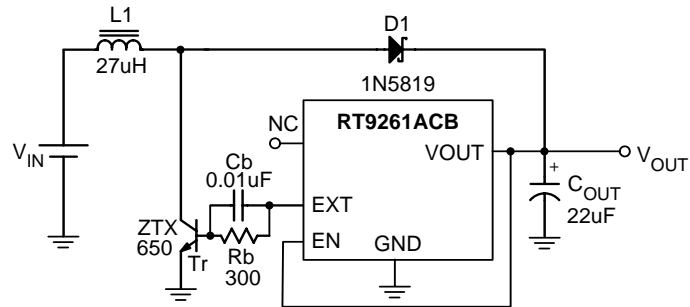


Figure 4

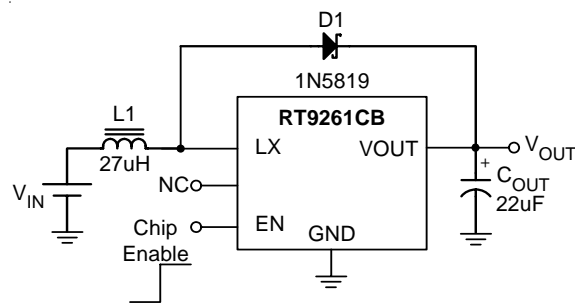
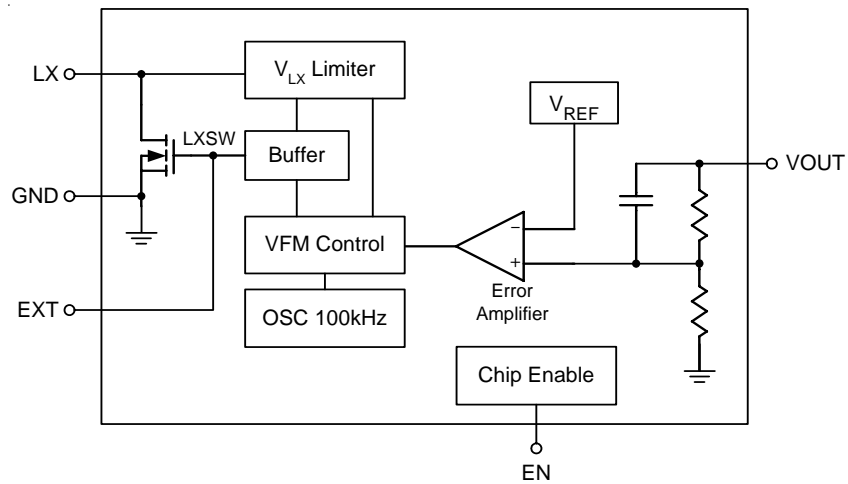


Figure 5

Functional Pin Description

| Pin No. | | | | Pin Name | Pin Function |
|---------|--------|-------|--------|----------|---------------------------|
| -xxCX | A-xxCX | -xxCB | A-xxCB | | |
| 1 | 1 | 4 | 4 | GND | Ground |
| 2 | 2 | 2 | 2 | VOUT | Output Voltage |
| 3 | -- | 5 | -- | LX | Pin for Switching |
| -- | 3 | -- | 5 | EXT | Drive External Device |
| -- | -- | 1 | 1 | EN | Chip Enable (Active High) |
| -- | -- | 3 | 3 | NC | No Connected |

Function Block Diagram



Notes:

- (1) LX Pin..... only for 9261-□□CX and 9261-□□CB
- (2) EXT Pin.... only for 9261A-□□CX and 9261A-□□CB
- (3) EN Pin..... only for 9261-□□CB and 9261A-□□CB

Absolute Maximum Ratings

- Output Voltage ----- 8V
- LX Pin Voltage ⁽¹⁾ ----- 8V
- EXT Pin Voltage ⁽²⁾ ----- - 0.3 to V_{OUT} +0.3V
- EN Pin Voltage ⁽³⁾ ----- - 0.3 to V_{OUT} +0.3V
- LX Pin Output Current ⁽¹⁾ ----- 250mA
- EXT Pin Current ⁽²⁾ ----- ± 50mA
- Power Dissipation, P_D @ T_A = 25°C
 - SOT-89 ----- 0.5W
 - SOT-23-5 ----- 0.25W
- Package Thermal Resistance
 - SOT-89, θ_{JC} ----- 100°C/W
 - SOT-89, θ_{JA} ----- 300°C/W
 - SOT-23-5, θ_{JA} ----- 250°C/W
- Operating Temperature Range ----- - 20 to +85°C
- Storage Temperature Range ----- 165°C
- Lead Temperature (Soldering, 10 sec.) ----- 260°C

Notes:

- (1) Applicable to RT9261-□□CX and RT9261-□□CB
- (2) Applicable to RT9261A-□□CX and RT9261A-□□CB
- (3) Applicable to RT9261-□□CB and RT9261A-□□CB

Electrical Characteristics (Refer to Figure 1)

| Parameter | Symbol | Test Conditions | Min | Typ | Max | Units |
|-------------------------------|---|--|------|------|-----|-------|
| Output Voltage Accuracy | ΔV _{OUT} | | -2 | -- | +2 | % |
| Input Voltage | V _{IN} | | -- | -- | 7 | V |
| Start-up Voltage | V _{ST} | I _{OUT} = 1mA, V _{IN} : 0 → 2V | -- | 0.85 | 1.0 | V |
| Hold-on Voltage | V _{HO} | I _{OUT} = 1mA, V _{IN} : 2 → 0V | 0.7 | -- | -- | V |
| Input Current 1 | V _{OUT} ≤ 3.5V ⁽¹⁾ | To be measured at V _{IN} at no load | -- | 15 | 18 | μA |
| | 3.5V < V _{OUT} ≤ 5V ⁽²⁾ | | -- | 18 | 24 | |
| Input Current 2 | | To be measured at V _{OUT} in switch off condition | -- | 5 | 8 | μA |
| LX Switching Current | V _{OUT} ≤ 3.5V ⁽¹⁾ | I _{SWITCHING} V _{LX} = 0.4V | 60 | -- | -- | mA |
| | 3.5V < V _{OUT} ≤ 5V ⁽²⁾ | | 80 | -- | -- | |
| LX Leakage Current | I _{LEAKAGE} | V _{LX} = 6V | -- | -- | 0.5 | μA |
| Maximum Oscillator | F _{MAX} | | 80 | 120 | 160 | kHz |
| Oscillator Duty Cycle | D _{OSC} | On (V _{LX} " L ") side | 65 | 75 | 85 | % |
| Efficiency | | | -- | 75 | -- | % |
| V _{LX} Voltage Limit | | L _X switch on | 0.65 | 0.8 | 1.0 | V |

Notes:

- (1) Unless otherwise provided, V_{IN} = 1.8V, V_{SS} = 0V, I_{OUT} = 10mA, T_{OPT} = 25°C, and External Circuit of Typical Application
- (2) Unless otherwise provided, V_{IN} = 3V, V_{SS} = 0V, I_{OUT} = 10mA, T_{OPT} = 25°C, and External Circuit of Typical Application

Electrical Characteristics (Refer to Figure 2)

| Parameter | Symbol | Test Conditions | Min | Typ | Max | Units |
|------------------------------|--|--|------|------|-----|---------------|
| Output Voltage Accuracy | ΔV_{OUT} | | -2 | -- | +2 | % |
| Input Voltage | V_{IN} | | -- | -- | 7 | V |
| Start-up Voltage | V_{ST} | $I_{OUT} = 1\text{mA}$, $V_{IN}: 0 \rightarrow 2\text{V}$ | -- | 0.85 | 1.0 | V |
| Input Current 1 | $V_{OUT} \leq 3.5\text{V}^{(1)}$ | To be measured at V_{IN} at no load | -- | 30 | 50 | μA |
| | $3.5\text{V} < V_{OUT} \leq 5\text{V}^{(2)}$ | | -- | 60 | 90 | |
| Input Current 2 | $V_{OUT} \leq 3.5\text{V}^{(1)}$ | To be measured at V_{OUT} in switch off condition | -- | 6 | 10 | μA |
| | $3.5\text{V} < V_{OUT} \leq 5\text{V}^{(2)}$ | | -- | 6 | 10 | |
| EXT "H" Output Current | $V_{OUT} \leq 3.5\text{V}^{(1)}$ | $V_{EXT} = V_{OUT} - 0.4\text{V}$ | -1.5 | -- | -- | mA |
| | $3.5\text{V} < V_{OUT} \leq 5\text{V}^{(2)}$ | | -2 | -- | -- | |
| EXT "L" Output Current | $V_{OUT} \leq 3.5\text{V}^{(1)}$ | $V_{EXT} = 0.4\text{V}$ | 1.5 | -- | -- | mA |
| | $3.5\text{V} < V_{OUT} \leq 5\text{V}^{(2)}$ | | 2 | -- | -- | |
| Maximum Oscillator Frequency | F_{MAX} | | 80 | 120 | 160 | kHz |
| Oscillator Duty Cycle | D_{OSC} | V_{EXT} "H" side | 65 | 75 | 85 | % |

Notes:

(1)Unless otherwise provided, $V_{IN} = 1.8\text{V}$, $V_{SS} = 0\text{V}$, $I_{OUT} = 10\text{mA}$, $T_{OPT} = 25^\circ\text{C}$, and use External Circuit of Typical Application(2)Unless otherwise provided, $V_{IN} = 3\text{V}$, $V_{SS} = 0\text{V}$, $I_{OUT} = 10\text{mA}$, $T_{OPT} = 25^\circ\text{C}$, and External Circuit of Typical Application

Electrical Characteristics (Refer to Figure 3)

| Parameter | Symbol | Test Conditions | Min | Typ | Max | |
|------------------------------|--------------------------------|---|----------------------|------|-----|---------|
| Output Voltage Accuracy | ΔV_{OUT} | | -2 | -- | +2 | % |
| Input Voltage | V_{IN} | | -- | -- | 7 | V |
| Start-up Voltage | V_{ST} | $I_{OUT} = 1mA, V_{IN} : 0 \rightarrow 2V$ | -- | 0.85 | 1.0 | V |
| Hold-on Voltage | V_{HO} | $I_{OUT} = 1mA, V_{IN} : 2 \rightarrow 0V$ | 0.7 | -- | -- | V |
| Efficiency | $V_{OUT} \leq 3.5V^{(1)}$ | | -- | 75 | -- | % |
| | $3.5V < V_{OUT} \leq 5V^{(2)}$ | | -- | 85 | -- | |
| Input Current 1 | $V_{OUT} \leq 3.5V^{(1)}$ | To be measured at V_{IN} at no load | -- | 15 | 18 | μA |
| | $3.5V < V_{OUT} \leq 5V^{(2)}$ | | -- | 18 | 24 | |
| Input Current 2 | $V_{OUT} \leq 3.5V^{(1)}$ | To be measured at V_{OUT} in switch off condition | -- | 5 | 8 | μA |
| | $3.5V < V_{OUT} \leq 5V^{(2)}$ | | -- | 6 | 10 | |
| LX Switching Current | $V_{OUT} \leq 3.5V^{(1)}$ | $I_{SWITCHING}$ $V_{LX} = 0.4V$ | 60 | -- | -- | mA |
| | $3.5V < V_{OUT} \leq 5V^{(2)}$ | | 80 | -- | -- | |
| LX Leakage Current | $I_{LEAKAGE}$ | $V_{LX} = 6V$ | -- | -- | 0.5 | μA |
| EN "H" Level | | $V_{IN} = V_{OUT} \times 0.9$ | $0.4 \times V_{OUT}$ | -- | -- | V |
| EN "L" Level | | $V_{IN} = V_{OUT} \times 0.9$ | -- | -- | 0.2 | V |
| EN "H" Input Current | | $EN = V_{OUT}$ | -- | -- | 0.5 | μA |
| EN "L" Input Current | | $EN = 0V$ | -0.5 | -- | -- | μA |
| Maximum Oscillator Frequency | F_{MAX} | | 80 | 120 | 160 | kHz |
| Oscillator Duty Cycle | D_{OSC} | On (V_{LX} "L") side | 65 | 75 | 85 | % |
| V_{LX} Voltage Limit | | LX switch on | 0.65 | 0.8 | 1.0 | V |

Notes:

(1)Unless otherwise provided, $V_{IN} = 1.8V, V_{SS} = 0V, I_{OUT} = 10mA, T_{OPT} = 25^{\circ}C$, and use External Circuit of Typical Application

(2)Unless otherwise provided, $V_{IN} = 3V, V_{SS} = 0V, I_{OUT} = 10mA, T_{OPT} = 25^{\circ}C$, and External Circuit of Typical Application

Electrical Characteristics (Refer to Figure 4)

| Parameter | Symbol | Test Conditions | Min | Typ | Max | Units |
|------------------------------|--|---|----------------------|------|-----|---------------|
| Output Voltage Accuracy | ΔV_{OUT} | | -2 | -- | +2 | % |
| Input Voltage | V_{IN} | | -- | -- | 7 | V |
| Start-up Voltage | V_{ST} | $I_{OUT} = 1\text{mA}$, $V_{IN} : 0 \rightarrow 2\text{V}$ | -- | 0.85 | 1.0 | V |
| Efficiency | $V_{OUT} \leq 3.5\text{V}^{(1)}$ | | | 75 | -- | % |
| | $3.5\text{V} < V_{OUT} \leq 5\text{V}^{(2)}$ | | | 85 | -- | |
| Input Current 1 | $V_{OUT} \leq 3.5\text{V}^{(1)}$ | To be measured at V_{IN} at no load | | 30 | 50 | μA |
| | $3.5\text{V} < V_{OUT} \leq 5\text{V}^{(2)}$ | | | 60 | 90 | |
| Input Current 2 | $V_{OUT} \leq 3.5\text{V}^{(1)}$ | To be measured at V_{OUT} in switch off condition | | 6 | 10 | μA |
| | $3.5\text{V} < V_{OUT} \leq 5\text{V}^{(2)}$ | | | | | |
| EXT "H" Output Current | $V_{OUT} \leq 3.5\text{V}^{(1)}$ | $V_{EXT} = V_{OUT} - 0.4\text{V}$ | | -1.5 | -- | mA |
| | $3.5\text{V} < V_{OUT} \leq 5\text{V}^{(2)}$ | | | -2 | -- | |
| EXT "L" Output Current | $V_{OUT} \leq 3.5\text{V}^{(1)}$ | $V_{EXT} = 0.4\text{V}$ | | 1.5 | -- | mA |
| | $3.5\text{V} < V_{OUT} \leq 5\text{V}^{(2)}$ | | | 2 | -- | |
| EN "H" Level | | $V_{IN} = V_{OUT} \times 0.9$ | $0.4 \times V_{OUT}$ | -- | -- | V |
| EN "L" Level | | $V_{IN} = V_{OUT} \times 0.9$ | -- | -- | 0.2 | V |
| EN "H" Input Current | | $EN = V_{OUT}$ | -- | -- | 0.5 | μA |
| EN "L" Input Current | | $EN = 0\text{V}$ | -0.5 | -- | -- | μA |
| Maximum Oscillator Frequency | F_{MAX} | | 80 | 120 | 160 | kHz |
| Oscillator Duty Cycle | D_{OSC} | On (V_{LX} "L") side | 65 | 75 | 85 | % |
| V_{LX} Voltage Limit | | LX switch on | 0.65 | 0.8 | 1.0 | V |

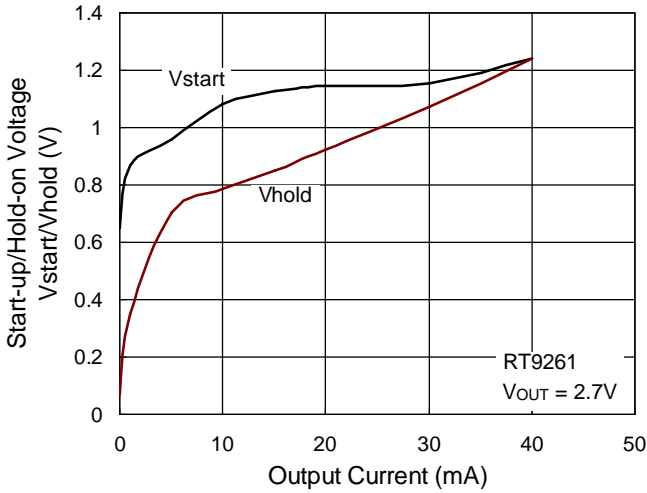
Notes:

(1) Unless otherwise provided, $V_{IN} = 1.8\text{V}$, $V_{SS} = 0\text{V}$, $I_{OUT} = 10\text{mA}$, $T_{OPT} = 25^\circ\text{C}$, and use External Circuit of Typical Application

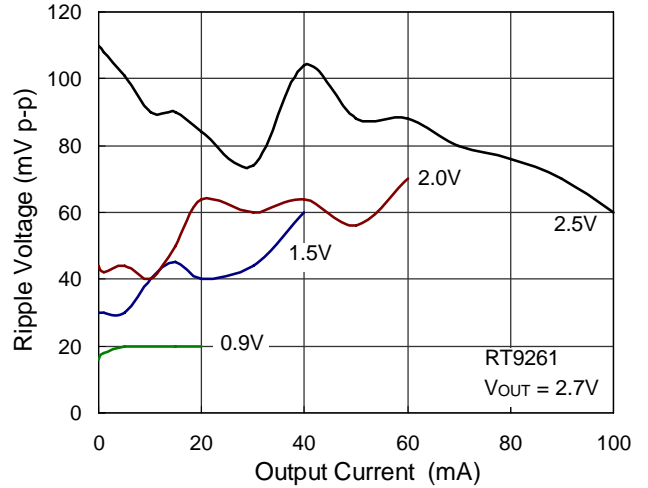
(2) Unless otherwise provided, $V_{IN} = 3\text{V}$, $V_{SS} = 0\text{V}$, $I_{OUT} = 10\text{mA}$, T_{OPT}

Typical Operating Characteristics

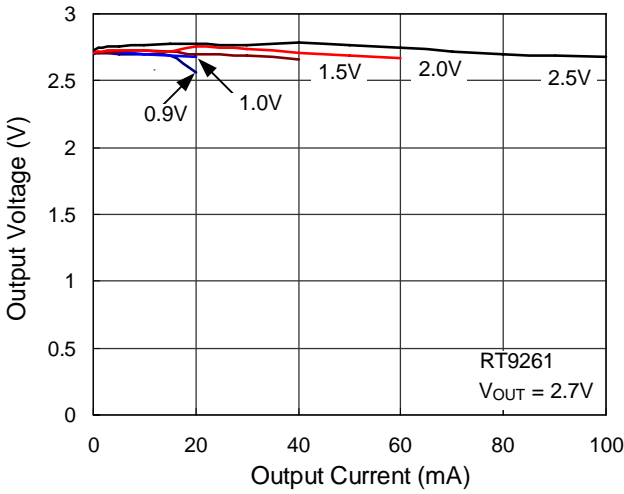
Start-up/Hold-on Voltage vs. Output Current



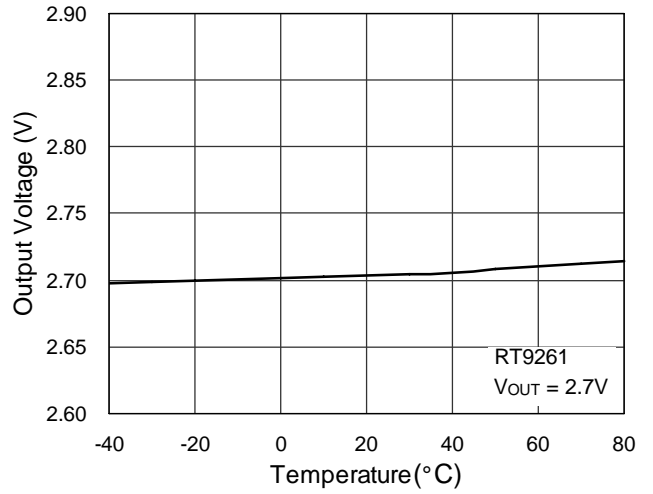
Output Current vs. Ripple Voltage



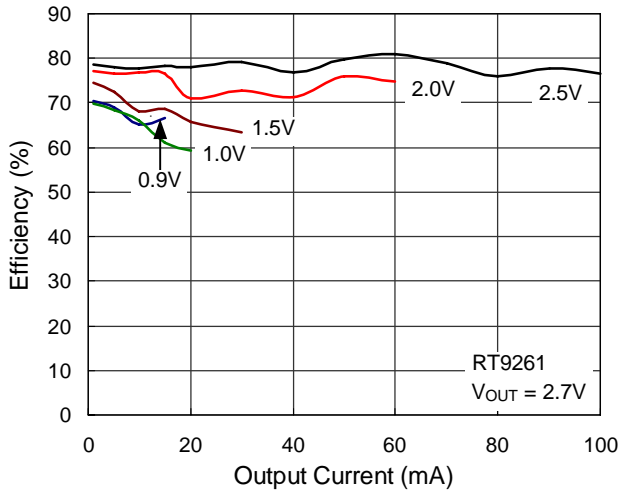
Output Voltage vs. Output Current



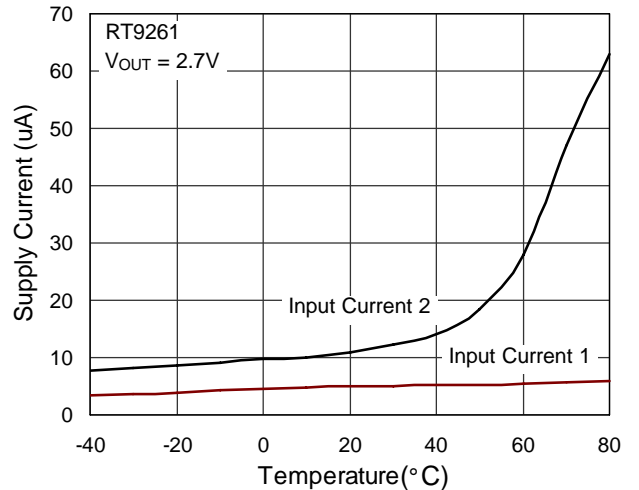
Output Voltage vs. Temperature



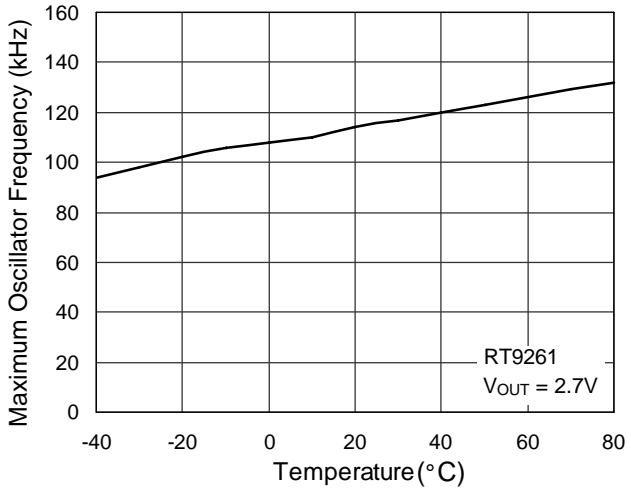
Efficiency vs. Output Current



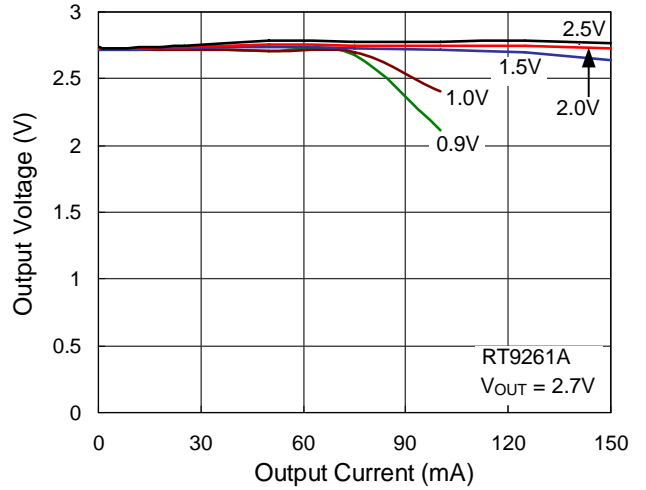
Supply Current vs. Temperature



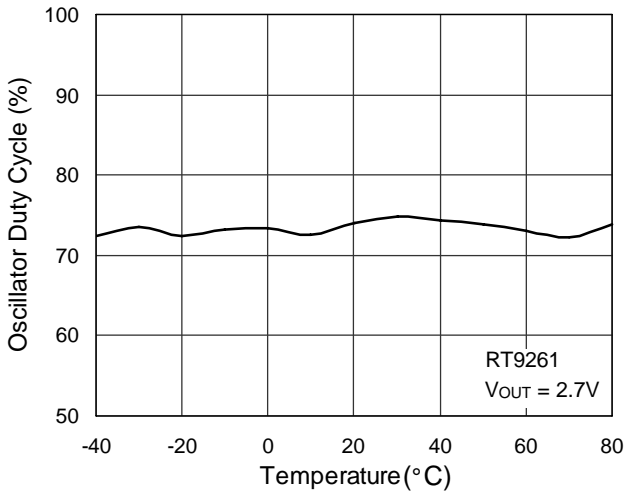
Maximum Oscillator Frequency vs. Temperature



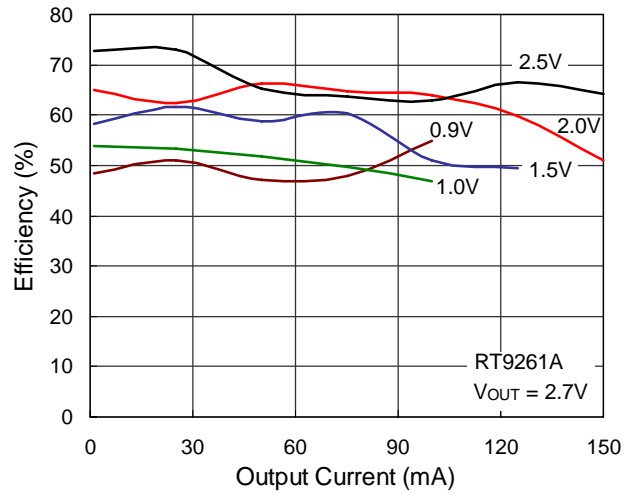
Output Voltage vs. Output Current



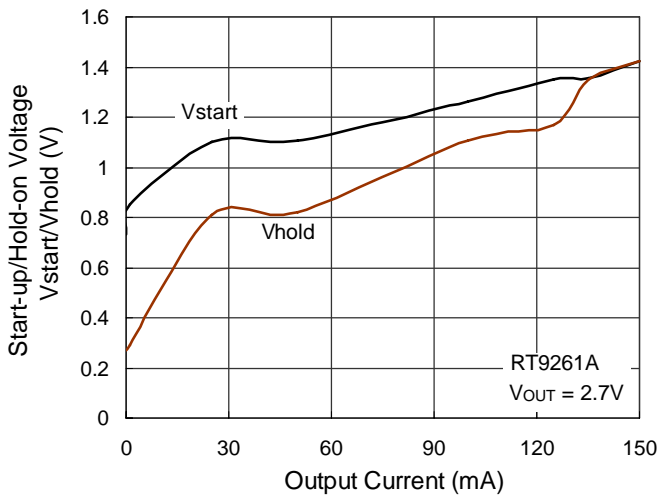
Oscillator Duty Cycle vs. Temperature



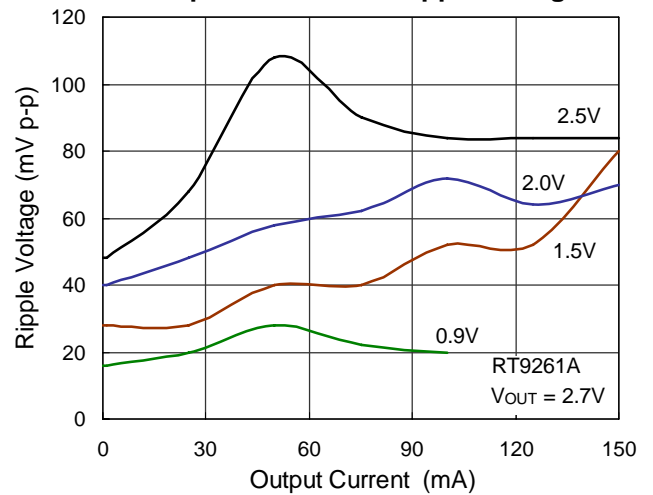
Efficiency vs. Output Current



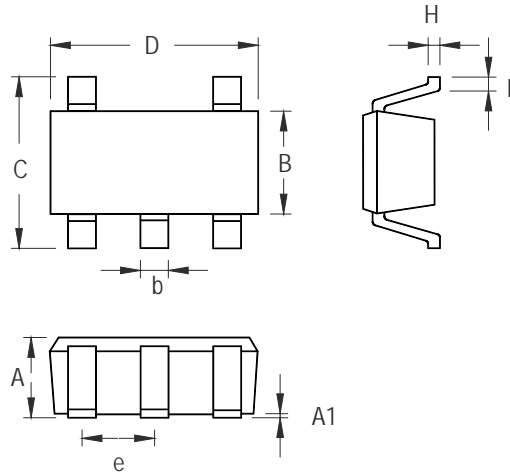
Start-up/Hold-on Voltage vs. Output Current



Output Current vs. Ripple Voltage

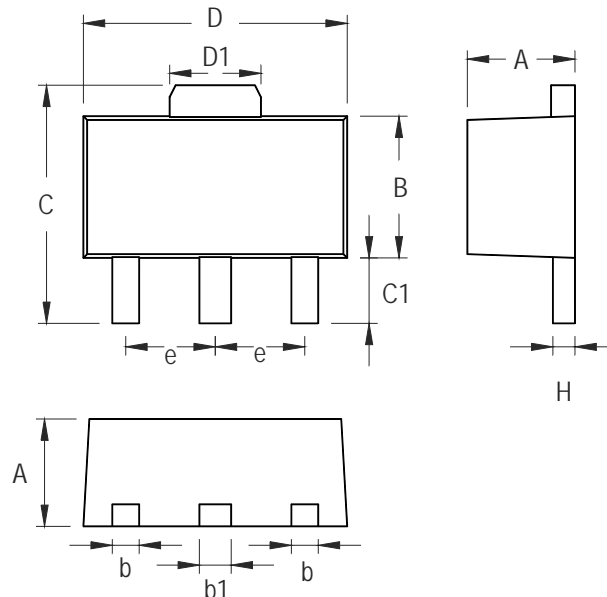


Outline Dimension



| Symbol | Dimensions In Millimeters | | Dimensions In Inches | |
|--------|---------------------------|-------|----------------------|-------|
| | Min | Max | Min | Max |
| A | 0.889 | 1.295 | 0.035 | 0.051 |
| A1 | 0.000 | 0.152 | 0.000 | 0.006 |
| B | 1.397 | 1.803 | 0.055 | 0.071 |
| b | 0.356 | 0.559 | 0.014 | 0.022 |
| C | 2.591 | 2.997 | 0.102 | 0.118 |
| D | 2.692 | 3.099 | 0.106 | 0.122 |
| e | 0.838 | 1.041 | 0.033 | 0.041 |
| H | 0.080 | 0.254 | 0.003 | 0.010 |
| L | 0.300 | 0.610 | 0.012 | 0.024 |

SOT-23-5 Surface Mount Package



| Symbol | Dimensions In Millimeters | | Dimensions In Inches | |
|--------|---------------------------|-------|----------------------|-------|
| | Min | Max | Min | Max |
| A | 1.397 | 1.600 | 0.055 | 0.063 |
| b | 0.356 | 0.483 | 0.014 | 0.019 |
| B | 2.388 | 2.591 | 0.094 | 0.102 |
| b1 | 0.406 | 0.533 | 0.016 | 0.021 |
| C | 3.937 | 4.242 | 0.155 | 0.167 |
| C1 | 0.787 | 1.194 | 0.031 | 0.047 |
| D | 4.394 | 4.597 | 0.173 | 0.181 |
| D1 | 1.397 | 1.753 | 0.055 | 0.069 |
| e | 1.448 | 1.549 | 0.057 | 0.061 |
| H | 0.356 | 0.432 | 0.014 | 0.017 |

3-Lead SOT-89 Surface Mount

RICHTEK TECHNOLOGY CORP.

Headquarter

5F, No. 20, Taiyuen Street, Chupei City
Hsinchu, Taiwan, R.O.C.

Tel: (8863)5526789 Fax: (8863)5526611

RICHTEK TECHNOLOGY CORP.

Taipei Office (Marketing)

8F-1, No. 137, Lane 235, Paochiao Road, Hsintien City
Taipei County, Taiwan, R.O.C.

Tel: (8862)89191466 Fax: (8862)89191465

Email: marketing@richtek.com