



## 4.5Msps/4Msps, 5V/3V, 2-Channel, True-Differential, 10-Bit ADCs

### General Description

The MAX1334/MAX1335 2-channel, serial-output, 10-bit, analog-to-digital converters (ADCs) feature two true-differential analog inputs and offer outstanding noise immunity and dynamic performance. Both devices easily interface with SPI™/QSPI™/MICROWIRE™ and standard digital signal processors (DSPs).

The MAX1334 operates from a single +4.75V to +5.25V supply with sampling rates up to 4.5Msps. The MAX1335 operates from a single +2.7V to +3.6V supply with sampling rates up to 4Msps. These devices feature a partial power-down mode and a full power-down mode that reduce the supply current to 3.3mA and 0.2μA, respectively. Also featured is a separate power-supply input (DVDD) that allows direct interfacing to +2.7V to +3.6V digital logic. The fast conversion speed, low power dissipation, excellent AC performance, and DC accuracy ( $\pm 0.4$  LSB INL) make the MAX1334/MAX1335 ideal for industrial process control, motor control, and base-station applications.

The MAX1334/MAX1335 are available in a space-saving (3mm x 3mm), 16-pin, TQFN package and operate over the extended ( $-40^{\circ}\text{C}$  to  $+85^{\circ}\text{C}$ ) temperature range.

### Applications

Data Acquisition  
Bill Validation  
Motor Control  
Base Stations  
High-Speed Modems  
Optical Sensors  
Industrial Process Control

### Features

- ◆ 4.5Msps Sampling Rate (+5V, MAX1334)
- ◆ 4Msps Sampling Rate (+3V, MAX1335)
- ◆ Separate Logic Supply: +2.7V to +3.6V
- ◆ Two True-Differential Analog Input Channels
- ◆ Bipolar/Unipolar Selection Input
- ◆ Only 40mW (typ) Power Consumption
- ◆ Only 2μA (max) Shutdown Current
- ◆ High-Speed, SPI-Compatible, 3-Wire Serial Interface
- ◆ 2.6MHz Full-Linear Bandwidth
- ◆ 61dB SINAD at 525kHz Input Frequency
- ◆ No Pipeline Delays
- ◆ Space-Saving (3mm x 3mm), 16-Pin TQFN Package

### Ordering Information

| PART         | TEMP RANGE                                     | PIN-PACKAGE                | PKG CODE |
|--------------|--|----------------------------|----------|
| MAX1334ETE** | $-40^{\circ}\text{C}$ to $+85^{\circ}\text{C}$ | 16 TQFN-EP*<br>(3mm x 3mm) | T1633F-3 |
| MAX1335ETE   | $-40^{\circ}\text{C}$ to $+85^{\circ}\text{C}$ | 16 TQFN-EP*<br>(3mm x 3mm) | T1633F-3 |

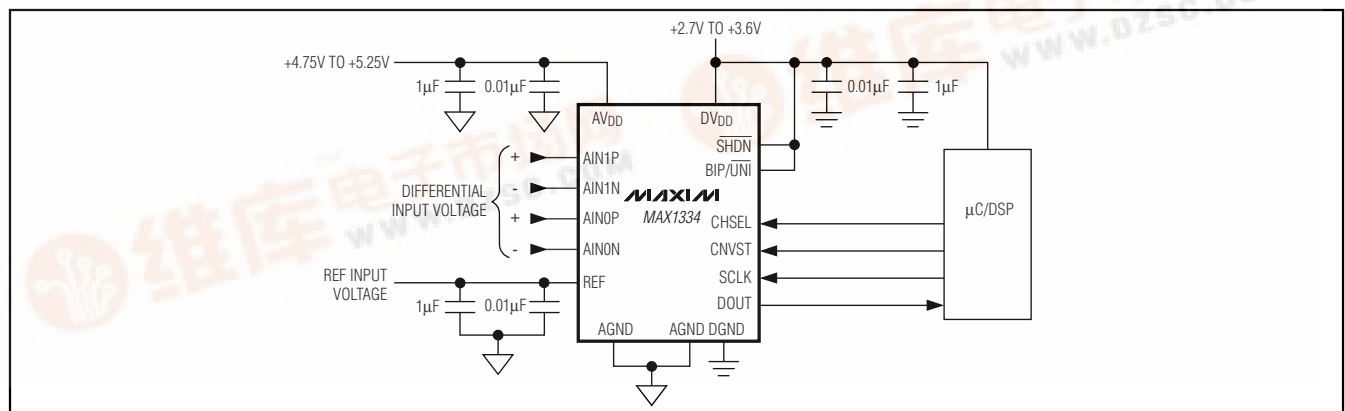
\*EP = Exposed paddle.

\*\*Future product—contact factory for availability.

Selector Guide appears at end of data sheet.

Pin Configuration appears at end of data sheet.

### Typical Operating Circuit



SPI/QSPI are trademarks of Motorola, Inc.

MICROWIRE is a trademark of National Semiconductor Corp.

MAXIM

Maxim Integrated Products 1

For pricing, delivery, and ordering information, please contact Maxim/Dallas Direct! at

MAX1334/MAX1335

## 4.5Msps/4Msps, 5V/3V, 2-Channel, True-Differential, 10-Bit ADCs

### ABSOLUTE MAXIMUM RATINGS

|   |                        |
|---|------------------------|
| AVDD to AGND (MAX1334)                          | -0.3V to +6V           |
| AVDD to AGND (MAX1335)                          | -0.3V to +4V           |
| DVDD to DGND                                    | -0.3V to +4V           |
| AGND to DGND                                    | -0.3V to +0.3V         |
| SCLK, CNVST, SHDN, CHSEL, BIP/UNI, DOUT to DGND | -0.3V to (DVDD + 0.3V) |
| AIN0P, AIN0N, AIN1P, AIN1N, REF to AGND         | -0.3V to (AVDD + 0.3V) |
| Maximum Current into Any Pin                    | ±50mA                  |

|  |                 |
|--|-----------------|
| Continuous Power Dissipation (TA = +70°C)  |                 |
| 16-Pin TQFN (derate 17.5mW/°C above +70°C) | 1398.6mW        |
| Operating Temperature Range                | -40°C to +85°C  |
| Junction Temperature                       | +150°C          |
| Storage Temperature Range                  | -60°C to +150°C |
| Lead Temperature (soldering, 10s)          | +300°C          |

Stresses beyond those listed under "Absolute Maximum Ratings" may cause permanent damage to the device. These are stress ratings only, and functional operation of the device at these or any other conditions beyond those indicated in the operational sections of the specifications is not implied. Exposure to absolute maximum rating conditions for extended periods may affect device reliability.

### ELECTRICAL CHARACTERISTICS (MAX1334)

(AVDD = +4.75V to +5.25V, DVDD = +2.7V to +3.6V, fSCLK = 76MHz, VREF = 4.096V, TA = TMIN to TMAX, unless otherwise noted. Typical values are at TA = +25°C.)

| PARAMETER   | SYMBOL | CONDITIONS   | MIN  | TYP  | MAX  | UNITS  |
|---|--------|--|------|------|------|--------|
| <b>DC ACCURACY (Note 1) (BIP/UNI = DGND)</b>  |        |  |      |      |      |        |
| Resolution  | N      |  | 10   |      |      | Bits   |
| Integral Nonlinearity   | INL    |  |      | ±0.4 | ±1.0 | LSB    |
| Differential Nonlinearity   | DNL    |  |      | ±0.4 | ±1.0 | LSB    |
| Offset Error  |        |  |      | ±1.0 | ±1.5 | LSB    |
| Gain Error  |        |  |      | ±1.5 | ±4.0 | LSB    |
| Offset-Error Temperature Coefficient  |        |  |      | ±1.1 |      | ppm/°C |
| Gain-Error Temperature Coefficient  |        |  |      | ±4.5 |      | ppm/°C |
| <b>DYNAMIC SPECIFICATIONS (AIN = -0.2dBFS, fIN = 525kHz, BIP/UNI = DVDD, unless otherwise noted) (Note 1)</b> |        |  |      |      |      |        |
| Signal-to-Noise Ratio   | SNR    |  | 66   | 61   |      | dB     |
| Signal-to-Noise Plus Distortion   | SINAD  |  | 59.5 | 61   |      | dB     |
| Total Harmonic Distortion   | THD    |  |      | -77  | -68  | dBc    |
| Spurious-Free Dynamic Range   | SFDR   |  | 68   | 78   |      | dBc    |
| Intermodulation Distortion  | IMD    | fIN1 = 103.5kHz, AIN1 = <b>TBD</b> dBFS<br>fIN2 = 113.5kHz, AIN2 = <b>TBD</b> dBFS |      | -72  |      | dB     |
| Channel-to-Channel Isolation  |        |  |      | 76   |      | dB     |
| Full-Linear Bandwidth   |        | SINAD > 56dB   |      | 2.6  |      | MHz    |
| Full-Power Bandwidth  |        |  |      | 5.4  |      | MHz    |
| Small-Signal Bandwidth  |        |  |      | 5    |      | MHz    |
| <b>CONVERSION RATE</b>  |        |  |      |      |      |        |
| Minimum Conversion Time   | tCONV  | Figure 5   |      |      | 171  | ns     |
| Maximum Throughput Rate   |        |  | 4.5  |      |      | Msps   |
| Minimum Track-and-Hold Acquisition Time   | tACQ   | Figure 5   |      |      | 32   | ns     |

## 4.5MSPS/4MSPS, 5V/3V, 2-Channel, True-Differential, 10-Bit ADCs

### ELECTRICAL CHARACTERISTICS (MAX1334) (continued)

(AVDD = +4.75V to +5.25V, DVDD = +2.7V to +3.6V, fSCLK = 76MHz, VREF = 4.096V, TA = TMIN to TMAX, unless otherwise noted. Typical values are at TA = +25°C.)

| PARAMETER  | SYMBOL | CONDITIONS  | MIN            | TYP  | MAX               | UNITS |
|--|--------|---|----------------|------|-------------------|-------|
| Aperture Delay   | tAD    | Figure 21   |                | < 10 |                   | ns    |
| Aperture Jitter  | tAJ    | Figure 21   |                | < 10 |                   | ps    |
| <b>DIFFERENTIAL ANALOG INPUTS (AIN0P, AIN0N, AIN1P, AIN1N)</b> |        |   |                |      |                   |       |
| Differential Input Voltage Range (VAIN_P - VAIN_N)             | VIN    | BIP/UNI = DGND  | 0              |      | VREF              | V     |
|  |        | BIP/UNI = DVDD  | -VREF / 2      |      | +VREF / 2         |       |
| Absolute Input Voltage Range                                   |        |   | AGND<br>- 50mV |      | AVDD<br>+<br>50mV | V     |
| DC Leakage Current   | ILKG   |   |                |      | ±10               | µA    |
| Input Capacitance  | CIN    |   |                | 14   |                   | pF    |
| <b>REFERENCE INPUT (REF)</b>                                   |        |   |                |      |                   |       |
| REF Input Voltage Range  | VREF   |   | 1.0            |      | AVDD<br>+<br>50mV | V     |
| REF Input Capacitance  | CREF   |   |                | 14   |                   | pF    |
| REF DC Leakage Current   | IREF   |   |                |      | ±10               | µA    |
| <b>DIGITAL INPUTS (SCLK, CNVST, SHDN, CHSEL, BIP/UNI)</b>      |        |   |                |      |                   |       |
| Input-Voltage Low  | VIL    |   |                |      | 0.3 x<br>DVDD     | V     |
| Input-Voltage High   | VIH    |   |                |      | 0.7 x<br>DVDD     | V     |
| Input Hysteresis   |        |   |                | 100  |                   | mV    |
| Input Leakage Current  | ILKG   |   |                | ±0.2 | ±5                | µA    |
| Input Capacitance  | CIN    |   |                | 15   |                   | pF    |
| <b>DIGITAL OUTPUT (DOUT)</b>                                   |        |   |                |      |                   |       |
| Output-Voltage Low   | VOL    | ISINK = 5mA   |                |      | 0.4               | V     |
| Output-Voltage High  | VOH    | ISOURCE = 1mA   |                |      | DVDD -<br>0.5     | V     |
| Tri-State Leakage Current                                      | ILKGT  | Between conversions, CNVST = DVDD                                       |                |      | ±1                | µA    |
| Tri-State Output Capacitance                                   | COUT   | Between conversions, CNVST = DVDD                                       |                | 15   |                   | pF    |
| <b>POWER REQUIREMENTS</b>                                      |        |   |                |      |                   |       |
| Analog Supply Voltage  | AVDD   |   | 4.75           |      | 5.25              | V     |
| Digital Supply Voltage   | DVDD   |   | 2.7            |      | 3.6               | V     |
| Analog Supply Current  | IAVDD  | Normal mode; average unloaded current (fSAMPLE = 4.0MHz, fSCLK = 64MHz) |                | 11   | 12                | mA    |
|  |        | Partial power-down mode   |                | 3.3  | 4                 |       |
|  |        | Full power-down mode  |                | 0.1  | 2                 | µA    |

## 4.5Msps/4Msps, 5V/3V, 2-Channel, True-Differential, 10-Bit ADCs

### ELECTRICAL CHARACTERISTICS (MAX1334) (continued)

(AVDD = +4.75V to +5.25V, DVDD = +2.7V to +3.6V, fSCLK = 76MHz, VREF = 4.096V, TA = TMIN to TMAX, unless otherwise noted. Typical values are at TA = +25°C.)

| PARAMETER              | SYMBOL | CONDITIONS   | MIN  | TYP | MAX  | UNITS |
|------------------------|--------|--|------|-----|------|-------|
| Digital Supply Current | IDVDD  | Average unloaded current (fSAMPLE = 4.5MHz, fSCLK = 76MHz, zero-scale input) |      | 5   | 8    | mA    |
|                        |        | Power-down (fSCLK = 76MHz)   |      | 18  | 45   | μA    |
|                        |        | Static or power-down, all digital inputs are connected to DVDD or DGND       |      | 0.2 | 2    |       |
| Power-Supply Rejection | PSR    | AVDD = 4.75V to 5.25V, full-scale input                                      | ±0.5 |     | ±0.3 | mV    |

### TIMING CHARACTERISTICS (MAX1334) (Figure 4)

(AVDD = +4.75V to +5.25V, DVDD = +2.7V to +3.6V, TA = TMIN to TMAX, unless otherwise noted. Typical values are at TA = +25°C.)

| PARAMETER                                  | SYMBOL | CONDITIONS                                       | MIN  | TYP | MAX | UNITS |
|--|--------|--|------|-----|-----|-------|
| SCLK Clock Period                          | tCP    |  | 13.1 |     |     | ns    |
| SCLK Pulse Width                           | tSPW   |  | 6    |     |     | ns    |
| CNVST Rise to DOUT Disable                 | tCRDD  |  | 15   |     |     | ns    |
| CNVST Fall to DOUT Enable                  | tCFDE  |  | 15   |     |     | ns    |
| CHSEL to CNVST Fall Setup                  | tCHCF  |  | 32   |     |     | ns    |
| BIP/UN $\bar{I}$ to CNVST Fall Setup       | tBUCF  |  | 32   |     |     | ns    |
| CNVST Fall to CHSEL Hold                   | tCFCH  |  | 0    |     |     | ns    |
| CNVST Fall to BIP/UN $\bar{I}$ Hold        | tCFBU  |  | 0    |     |     | ns    |
| DOUT Remains Valid After SCLK              | tDHOLD | CLOAD = 0pF (Note 2)                             | 1    | 2   |     | ns    |
| SCLK Rise to DOUT Transition               | tDOT   | CLOAD = 30pF                                     |      |     | 6   | ns    |
| CNVST to SCLK Rise                         | tSETUP |  | 6    |     |     | ns    |
| SCLK Rise to CNVST                         | tHOLD  |  | 0    |     |     | ns    |
| CNVST Pulse Width                          | tCSW   |  | 6    |     |     | ns    |
| Minimum Recovery Time (Full Power-Down)    | tFPD   | From CNVST fall or $\overline{\text{SHDN}}$ rise |      |     | 4   | μs    |
| Minimum Recovery Time (Partial Power-Down) | tPPD   | From CNVST fall                                  |      |     | 500 | ns    |

**Note 1:** Tested with AVDD = 4.75V and DVDD = +2.7V.

**Note 2:** Guaranteed by design, not production tested.

## 4.5MSPS/4MSPS, 5V/3V, 2-Channel, True-Differential, 10-Bit ADCs

### ELECTRICAL CHARACTERISTICS (MAX1335)

(AVDD = +2.7V to +3.6V, DVDD = +2.7V to +3.6V, fSCLK = 64MHz, VREF = 2.5V, TA = TMIN to TMAX, unless otherwise noted. Typical values are at TA = +25°C.)

| PARAMETER   | SYMBOL | CONDITIONS     | MIN         | TYP         | MAX  | UNITS  |
|---|--------|----------------|-------------|-------------|------|--------|
| <b>DC ACCURACY (Note 3) (BIP/UNI = DGND)</b>  |        |                |             |             |      |        |
| Resolution  | N      |                | 10          |             |      | Bits   |
| Relative Accuracy   | INL    |                |             | ±0.4        | ±1.0 | LSB    |
| Differential Nonlinearity   | DNL    |                |             | ±0.4        | ±1.0 | LSB    |
| Offset Error  |        |                |             | ±1.0        | ±1.5 | LSB    |
| Gain Error  |        |                |             | ±1.5        | ±4.0 | LSB    |
| Offset-Error Temperature Coefficient  |        |                |             | ±1.1        |      | ppm/°C |
| Gain-Error Temperature Coefficient  |        |                |             | ±4.5        |      | ppm/°C |
| <b>DYNAMIC SPECIFICATIONS (AIN = -0.2dBFS, fIN = 525kHz, BIP/UNI = DVDD, unless otherwise noted) (Note 3)</b> |        |                |             |             |      |        |
| Signal-to-Noise Ratio   | SNR    |                | 60          | 61          |      | dB     |
| Signal-to-Noise Plus Distortion   | SINAD  |                | 59.5        | 61          |      | dB     |
| Total Harmonic Distortion   | THD    |                |             | -77         | -68  | dBc    |
| Spurious-Free Dynamic Range   | SFDR   |                | 68          | 78          |      | dBc    |
| Channel-to-Channel Isolation  |        |                |             | 76          |      | dB     |
| Full-Linear Bandwidth   |        | SINAD > 56dB   |             | 2.6         |      | MHz    |
| Full-Power Bandwidth  |        |                |             | 5.4         |      | MHz    |
| Small-Signal Bandwidth  |        |                |             | 5           |      | MHz    |
| <b>CONVERSION RATE</b>  |        |                |             |             |      |        |
| Minimum Conversion Time   | tCONV  | Figure 5       |             |             | 203  | ns     |
| Maximum Throughput Rate   |        |                | 4           |             |      | MSPS   |
| Minimum Track-and-Hold Acquisition Time   | tACQ   | Figure 5       |             |             | 39   | ns     |
| Aperture Delay  | tAD    | Figure 21      |             | < 10        |      | ns     |
| Aperture Jitter   | tAJ    | Figure 21      |             | < 10        |      | ps     |
| <b>DIFFERENTIAL ANALOG INPUTS (AIN0P, AIN0N, AIN1P, AIN1N)</b>  |        |                |             |             |      |        |
| Differential Input Voltage Range (VAIN_P - VAIN_N)  | VIN    | BIP/UNI = DGND | 0           | VREF        |      | V      |
|   |        | BIP/UNI = DVDD | -VREF / 2   | +VREF / 2   |      |        |
| Absolute Input Voltage Range  |        |                | AGND - 50mV | AVDD + 50mV |      | V      |
| DC Leakage Current  | ILKG   |                |             | ±1          |      | μA     |

## 4.5Msps/4Msps, 5V/3V, 2-Channel, True-Differential, 10-Bit ADCs

### ELECTRICAL CHARACTERISTICS (MAX1335) (continued)

(AVDD = +2.7V to +3.6V, DVDD = +2.7V to +3.6V, fSCLK = 64MHz, VREF = 2.5V, TA = TMIN to TMAX, unless otherwise noted. Typical values are at TA = +25°C.)

| PARAMETER   | SYMBOL | CONDITIONS   | MIN        | TYP  | MAX         | UNITS |
|---|--------|--|------------|------|-------------|-------|
| Input Capacitance   | CIN    |  |            | 14   |             | pF    |
| <b>REFERENCE INPUT (REF)</b>                              |        |  |            |      |             |       |
| REF Input Voltage   | VREF   |  | 1.0        |      | AVDD + 50mV | V     |
| REF Input Capacitance                                     | CREF   |  |            | 14   |             | pF    |
| REF DC Leakage Current                                    | IREF   |  |            |      | ±10         | μA    |
| <b>DIGITAL INPUTS (SCLK, CNVST, SHDN, CHSEL, BIP/UNI)</b> |        |  |            |      |             |       |
| Input-Voltage Low   | VIL    |  |            |      | 0.3 x DVDD  | V     |
| Input-Voltage High  | VIH    |  | 0.7 x DVDD |      |             | V     |
| Input Hysteresis  |        |  |            | 100  |             | mV    |
| Input Leakage Current                                     | ILKG   |  |            | ±0.2 | ±5          | μA    |
| Input Capacitance   | CIN    |  |            | 15   |             | pF    |
| <b>DIGITAL OUTPUT (DOUT)</b>                              |        |  |            |      |             |       |
| Output-Voltage Low  | VOL    | ISINK = 5mA  |            |      | 0.4         | V     |
| Output-Voltage High                                       | VOH    | ISOURCE = 1mA  | DVDD - 0.5 |      |             | V     |
| Tri-State Leakage Current                                 | ILKGT  | Between conversions, CNVST = DVDD  |            |      | ±1          | μA    |
| Tri-State Output Capacitance                              | COUT   | Between conversions, CNVST = DVDD  |            | 15   |             | pF    |
| <b>POWER REQUIREMENTS</b>                                 |        |  |            |      |             |       |
| Analog Supply Voltage                                     | AVDD   |  | 2.7        |      | 3.6         | V     |
| Digital Supply Voltage                                    | DVDD   |  | 2.7        |      | AVDD        | V     |
| Analog Supply Current                                     | IAVDD  | Normal mode; average unloaded current (fSAMPLE = 4MHz, fSCLK = 64MHz)      |            | 9.6  | 12          | mA    |
|   |        | Partial power-down mode  |            | 3.3  | 4           |       |
|   |        | Full power-down mode   |            | 0.1  | 2           | μA    |
| Digital Supply Current                                    | IDVDD  | Average unloaded current (fSAMPLE = 4MHz, fSCLK = 64MHz, zero-scale input) |            | 5.0  | 8.0         | mA    |
|   |        | Power-down (fSCLK = 40MHz)   |            | 18   | 45          |       |
|   |        | Static or power-down; all digital inputs are connected to DVDD or DGND     |            | 0.2  | 2           | μA    |
| Positive Supply Rejection                                 | PSR    | AVDD = 2.7V to 3.6V, full-scale input                                      |            |      | ±6          | mV    |

## 4.5MSPS/4MSPS, 5V/3V, 2-Channel, True-Differential, 10-Bit ADCs

### TIMING CHARACTERISTICS (MAX1335) (Figure 4)

( $AV_{DD} = +2.7V$  to  $+3.6V$ ,  $DV_{DD} = +2.7V$  to  $+3.6V$ ,  $T_A = T_{MIN}$  to  $T_{MAX}$ , unless otherwise noted. Typical values are at  $T_A = +25^{\circ}C$ .)

| PARAMETER                                  | SYMBOL      | CONDITIONS                                | MIN  | TYP | MAX | UNITS   |
|--|-------------|---|------|-----|-----|---------|
| SCLK Clock Period                          | $t_{CP}$    |   | 15.6 |     |     | ns      |
| SCLK Pulse Width                           | $t_{CPW}$   |   | 6    |     |     | ns      |
| CNVST Rise to DOUT Disable                 | $t_{CRDD}$  |   | 15   |     |     | ns      |
| CNVST Fall to DOUT Enable                  | $t_{CFDE}$  |   | 15   |     |     | ns      |
| CHSEL to CNVST Fall Setup                  | $t_{CHCF}$  |   | 36   |     |     | ns      |
| BIP/ $\overline{UNI}$ to CNVST Fall Setup  | $t_{BUCF}$  |   | 36   |     |     | ns      |
| CNVST Fall to CHSEL Hold                   | $t_{CFCH}$  |   | 0    |     |     | ns      |
| CNVST Fall to BIP/ $\overline{UNI}$ Hold   | $t_{CFBU}$  |   | 0    |     |     | ns      |
| DOUT Remains Valid After SCLK              | $t_{DHOLD}$ | $C_{LOAD} = 0pF$ (Note 4)                 | 1    | 2   |     | ns      |
| SCLK Rise to DOUT Transition               | $t_{DOT}$   | $C_{LOAD} = 30pF$                         |      |     | 6   | ns      |
| CNVST to SCLK Rise                         | $t_{SETUP}$ |   | 6    |     |     | ns      |
| SCLK Rise to CNVST                         | $t_{HOLD}$  |   | 0    |     |     | ns      |
| CNVST Pulse Width                          | $t_{CSW}$   |   | 6    |     |     | ns      |
| Minimum Recovery Time (Full Power-Down)    | $t_{FPD}$   | From CNVST fall or $\overline{SHDN}$ rise |      |     | 4   | $\mu s$ |
| Minimum Recovery Time (Partial Power-Down) | $t_{PPD}$   | From CNVST fall                           |      |     | 500 | ns      |

**Note 3:** Tested with  $AV_{DD} = DV_{DD} = +2.7V$ .

**Note 4:** Guaranteed by design, not production tested.

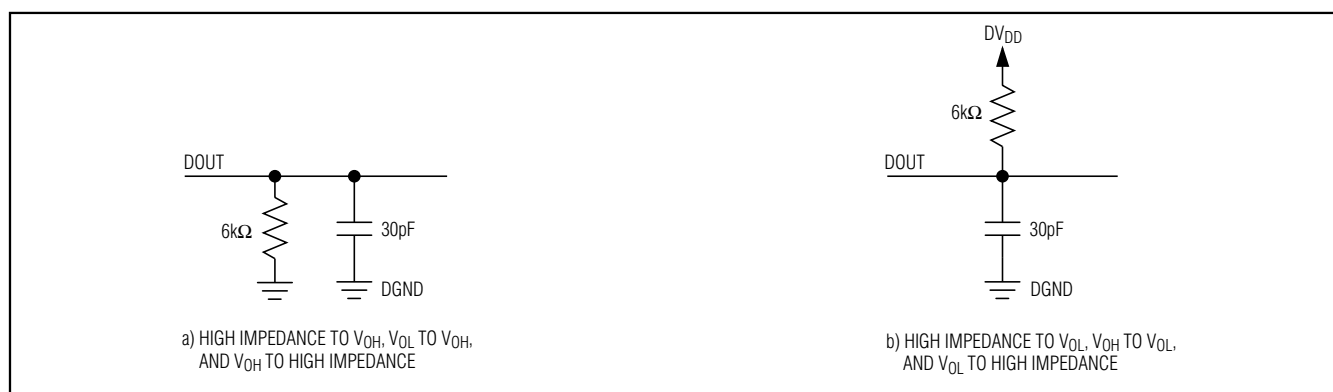


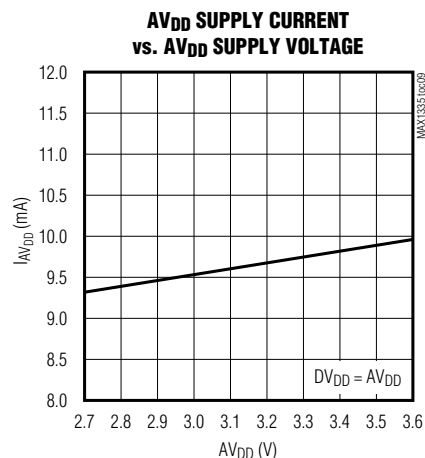
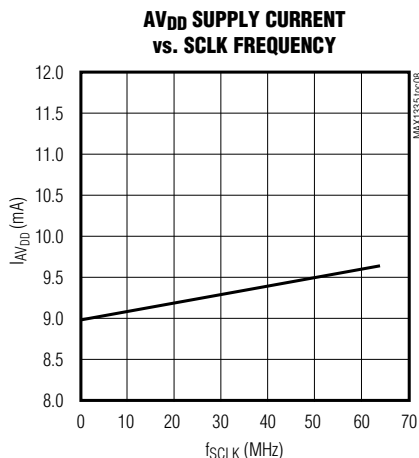
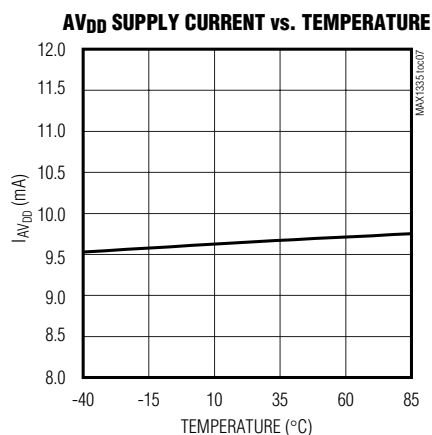
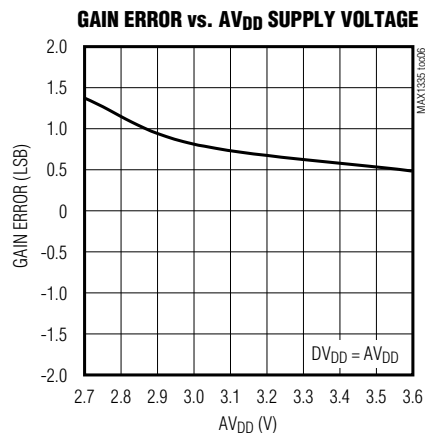
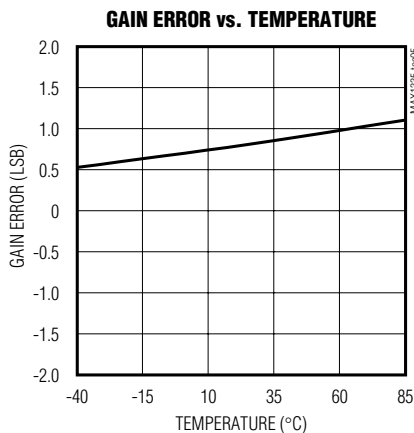
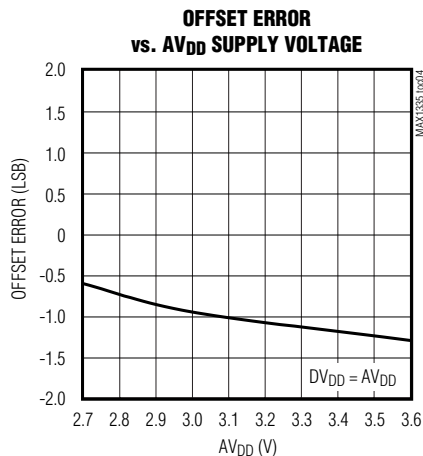
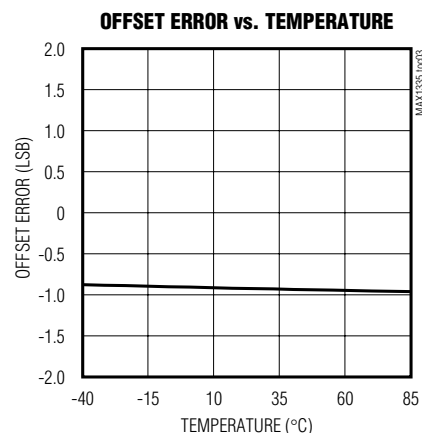
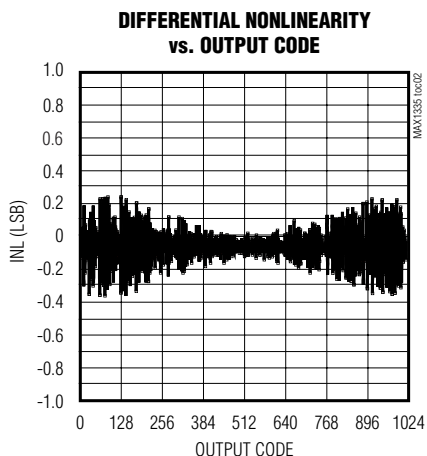
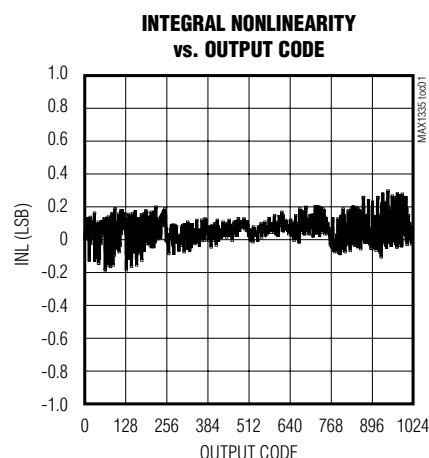
Figure 1. Load Circuits for Enable/Disable Times

# 4.5Msps/4Msps, 5V/3V, 2-Channel, True-Differential, 10-Bit ADCs

## Typical Operating Characteristics

( $AV_{DD} = +3V$ ,  $DV_{DD} = +3V$ ,  $V_{REF} = 2.048V$ ,  $f_{SCLK} = 40MHz$ ,  $T_A = +25^\circ C$ , unless otherwise noted.)

### MAX1335





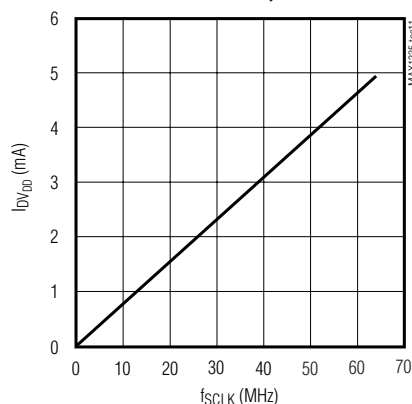
## 4.5MSPS/4MSPS, 5V/3V, 2-Channel, True-Differential, 10-Bit ADCs

### Typical Operating Characteristics (continued)

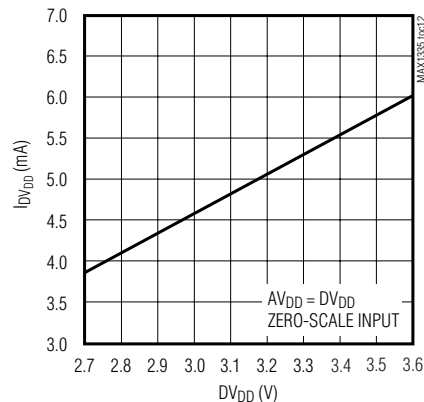
( $AV_{DD} = +3V$ ,  $DV_{DD} = +3V$ ,  $V_{REF} = 2.048V$ ,  $f_{SCLK} = 40MHz$ ,  $T_A = +25^{\circ}C$ , unless otherwise noted.)

#### MAX1335

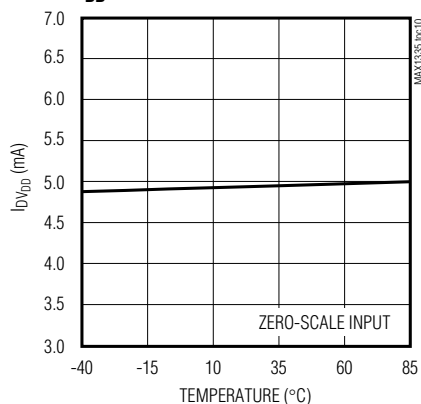
##### $DV_{DD}$ SUPPLY CURRENT vs. SCLK FREQUENCY



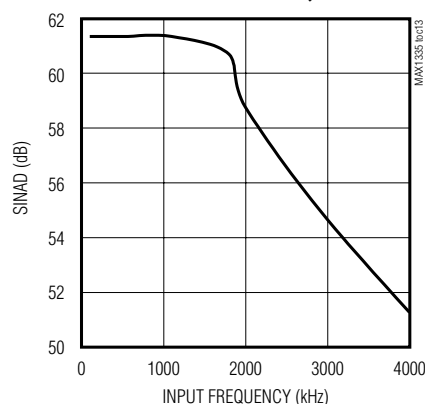
##### $DV_{DD}$ SUPPLY CURRENT vs. $DV_{DD}$ SUPPLY VOLTAGE



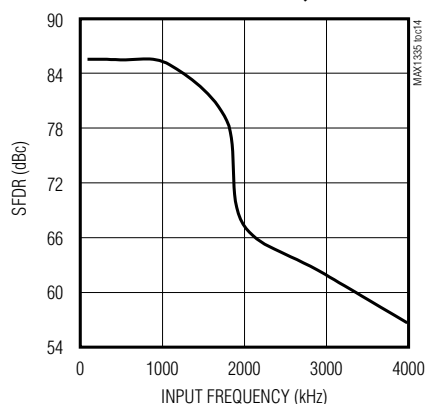
##### $DV_{DD}$ SUPPLY CURRENT vs. TEMPERATURE



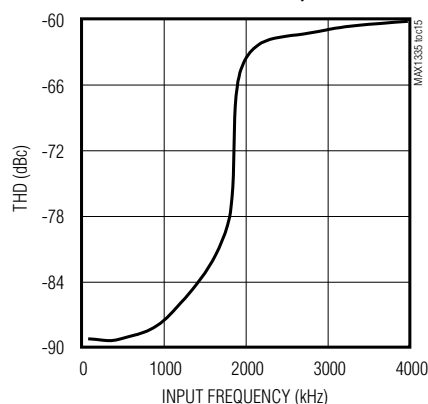
##### SINAD vs. INPUT FREQUENCY



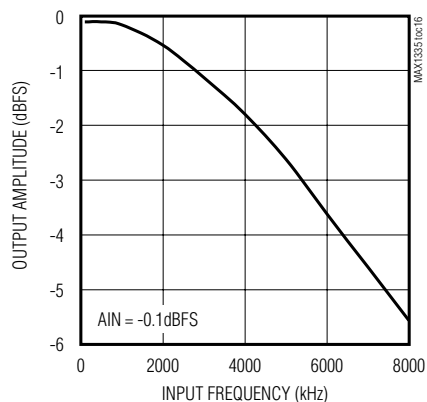
##### SFDR vs. INPUT FREQUENCY



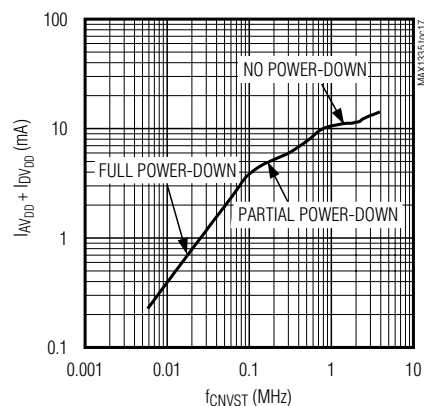
##### THD vs. INPUT FREQUENCY



##### OUTPUT AMPLITUDE vs. INPUT FREQUENCY



##### TOTAL SUPPLY CURRENT vs. THROUGHPUT RATE



## 4.5Msps/4Msps, 5V/3V, 2-Channel, True-Differential, 10-Bit ADCs

### Pin Description

| PIN   | NAME                  | FUNCTION  |
|-------|-----------------------|---|
| 1     | AIN0P                 | Positive Analog-Input Channel 0   |
| 2     | AIN0N                 | Negative Analog-Input Channel 0   |
| 3     | AIN1P                 | Positive Analog-Input Channel 1   |
| 4     | AIN1N                 | Negative Analog-Input Channel 1   |
| 5     | REF                   | External Reference Voltage Input. $V_{REF} = 1V$ to $(AV_{DD} + 50mV)$ . Bypass REF to AGND with a $0.1\mu F$ and a $1\mu F$ .  |
| 6     | $\overline{SHDN}$     | Shutdown Input. Pull $\overline{SHDN}$ low to enter full power-down mode. Drive $\overline{SHDN}$ high to resume normal operation regardless of previous software entered into power-down mode.   |
| 7     | BIP/ $\overline{UNI}$ | Analog-Input-Mode Select. Drive BIP/ $\overline{UNI}$ high to select bipolar-input mode. Pull BIP/ $\overline{UNI}$ low to select unipolar-input mode.  |
| 8, 16 | AGND                  | Analog Ground. Connect all AGNDs and EP to the same potential.  |
| 9     | CHSEL                 | Channel-Select Input. Drive CHSEL high to select channel 1. Pull CHSEL low to select channel 0.   |
| 10    | CNVST                 | Conversion-Start Input. The first rising edge of CNVST powers up the MAX1334/MAX1335 and begins acquiring the analog input. A falling edge samples the analog input and starts a conversion. CNVST also controls the power-down mode of the device (see the <i>Partial Power-Down (PPD) and Full Power-Down (FPD) Mode</i> section).  |
| 11    | SCLK                  | Serial-Clock Input. Clocks data out of the serial interface. SCLK also sets the conversion speed.   |
| 12    | DOUT                  | Serial-Data Output. Data is clocked out on the rising edge of SCLK (see the <i>Starting a Conversion</i> section).  |
| 13    | DVDD                  | Positive-Digital-Supply Input. $DV_{DD}$ is the positive supply input for the digital section of the MAX1334/MAX1335. Connect $DV_{DD}$ to a 2.7V to 3.6V power supply. Bypass $DV_{DD}$ to DGND with a $0.1\mu F$ capacitor in parallel with a $1\mu F$ capacitor. Place the bypass capacitors as close to the device as possible.   |
| 14    | DGND                  | Digital Ground. Ensure that the potential difference between AGND and DGND is less than $\pm 0.3V$ .  |
| 15    | AVDD                  | Positive-Analog-Supply Input. $AV_{DD}$ is the positive supply input for the analog section of the MAX1334/MAX1335. Connect $AV_{DD}$ to a 4.75V to 5.25V power supply for the MAX1334. Connect $AV_{DD}$ to a 2.7V to 3.6V power supply for the MAX1335. Bypass $AV_{DD}$ to AGND with a $0.1\mu F$ capacitor in parallel with a $1\mu F$ capacitor. Place the bypass capacitors as close to the device as possible. |
| —     | EP                    | Exposed Paddle. Internally connected to AGND. Connect the exposed paddle to the analog ground plane.  |

## 4.5MSPS/4MSPS, 5V/3V, 2-Channel, True-Differential, 10-Bit ADCs

### Detailed Description

The MAX1334/MAX1335 use an input track-and-hold (T/H) circuit along with a successive-approximation register (SAR) to convert a differential analog input signal to a digital 10-bit output. The serial interface requires only three digital lines (SCLK, CNVST, and DOUT) and provides easy interfacing to microcontrollers ( $\mu$ Cs) and DSPs. Figure 2 shows the block diagram for the MAX1334/MAX1335.

### Power Supplies

The MAX1334/MAX1335 accept two power supplies that allow the digital noise to be isolated from sensitive analog circuitry. For both the MAX1334 and MAX1335, the digital power supply input accepts a +2.7V to +3.6V supply voltage. However, the supply voltage range for the analog power supply is different for each device. The MAX1334 accepts a +4.75V to +5.25V analog power supply, and the MAX1335 accepts a +2.7V to +3.6V analog power supply. See the *Layout, Grounding, and Bypassing* section for information on how to isolate digital noise from the analog power input.

The MAX1334/MAX1335's analog power supply consists of one  $AV_{DD}$  input, two AGND inputs, and the exposed paddle (EP). The digital power input consists of one  $DV_{DD}$  input and one DGND input. Ensure that the potential on both AGND inputs is the same. Furthermore, ensure that the potential between AGND and DGND is limited to  $\pm 0.3V$ . Ideally, there should be no potential difference between AGND and DGND. There are no power-sequencing issues between  $AV_{DD}$  and  $DV_{DD}$ .

### True-Differential Analog Input T/H

The equivalent input circuit of Figure 3 shows the MAX1334/MAX1335's input architecture, which is composed of a T/H, a comparator, and a switched-capacitor DAC. On power-up, the MAX1334/MAX1335 enter full power-down mode. Drive CNVST high to exit full power-down mode and to start acquiring the input. The positive input capacitor is connected to AIN\_P and the negative input capacitor is connected to AIN\_N. The T/H enters its hold mode on the falling edge of CNVST and the ADC starts converting the sampled difference between the analog inputs. Once a conversion has been initiated, the T/H enters acquisition mode for the next conversion on the 13th falling edge of SCLK after CNVST has been transitioned from high to low.

The time required for the T/H to acquire an input signal is determined by how quickly its input capacitance is charged. If the input signal's source impedance is high, the acquisition time lengthens. The acquisition time,

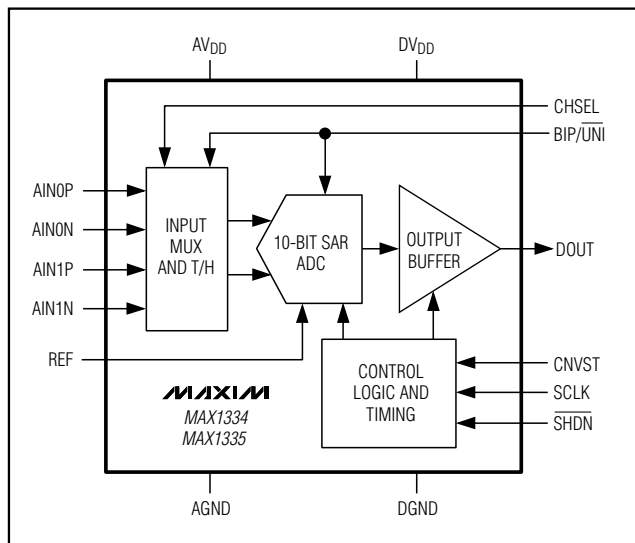


Figure 2. Block Diagram

$t_{ACQ}$ , is the minimum time needed for the signal to be acquired. It is calculated by the following equation:

$$t_{ACQ} \geq k \times (R_{SOURCE} + R_{IN}) \times C_{IN}$$

where:

$$k = 7.6 \approx \ln(2 \times 2^N)$$

The constant  $k$  is the number of RC time constants required so that the voltage on the internal sampling capacitor reaches  $N$ -bit accuracy, i.e., so that the difference between the input voltage and the sampling capacitor voltage is equal to 0.5 LSB.  $N = 10$  for the MAX1334/MAX1335.

$R_{IN} = 250\Omega$  is the equivalent differential analog input resistance,  $C_{IN} = 14pF$  is the equivalent differential analog input capacitance, and  $R_{SOURCE}$  is the source impedance of the input signal. Note that  $t_{ACQ}$  is never less than 32ns for the MAX1334 and 39ns for the MAX1335 and any source impedance below  $116\Omega$  does not significantly affect the ADC's AC performance.

### Input Bandwidth

The ADC's input-tracking circuitry has a 5MHz small-signal bandwidth, making it possible to digitize high-speed transient events and measure periodic signals with bandwidths exceeding the ADC's sampling rate by using undersampling techniques. To avoid high-frequency signals being aliased into the frequency band of interest, lowpass or bandpass filtering is recommended to limit the bandwidth of the input signal.

## 4.5Msps/4Msps, 5V/3V, 2-Channel, True-Differential, 10-Bit ADCs

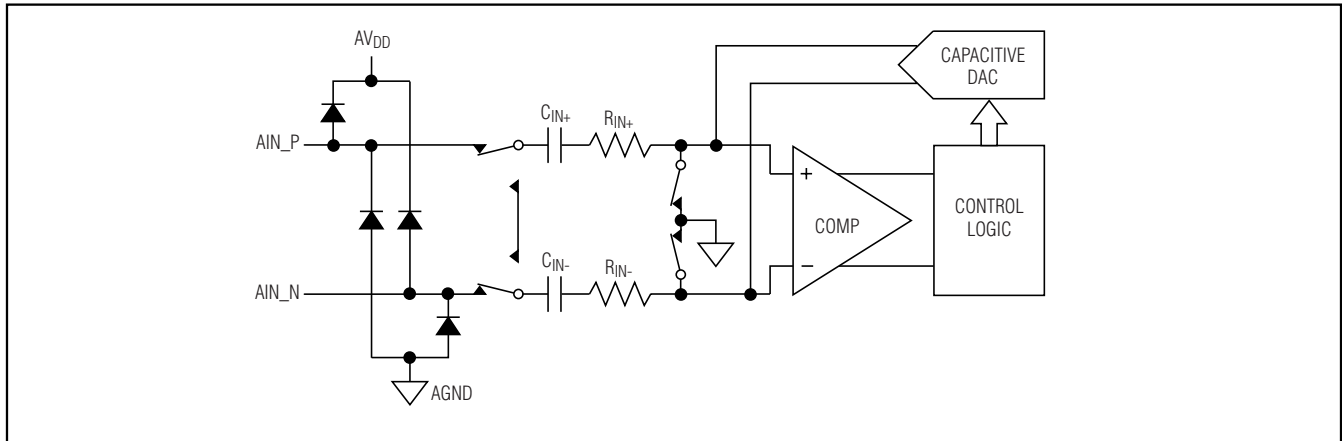


Figure 3a. Equivalent Input Circuit (Acquisition Mode)

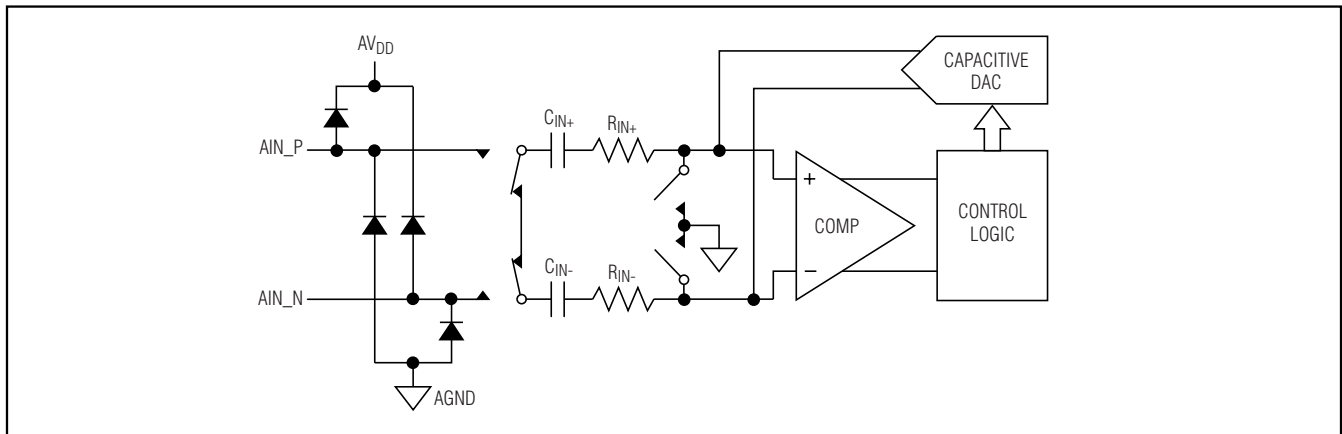


Figure 3b. Equivalent Input Circuit (Hold/Conversion Mode)

### Input Buffer

To improve the input signal bandwidth under AC conditions, drive the input with a wideband buffer (> 50MHz) that can drive the ADC's input capacitance (14pF) and settle quickly. Most applications require an input buffer to achieve 10-bit accuracy. Although slew rate and bandwidth are important, the most critical input buffer specification is settling time. The sampling requires an acquisition time of 32ns for the MAX1334 and 39ns for the MAX1335. At the beginning of the acquisition, the ADC internal sampling capacitors connect to the analog inputs, causing some disturbance. Ensure the amplifier is capable of settling to at least 10-bit accuracy during this interval. Use a low-noise, low-distortion, wideband amplifier that settles quickly and is stable with the ADC's 14pF input capacitance.

Refer to the Maxim website ([www.maxim-ic.com](http://www.maxim-ic.com)) for application notes on how to choose the optimum buffer amplifier for an ADC application. The MAX4430 is one of the devices that are ideal for this application.

### Differential Analog Input Range and Protection

The MAX1334/MAX1335 produce a digital output that corresponds to the differential analog input voltage as long as the differential analog inputs are within the specified range. When operating in unipolar mode ( $BIP/UNI = 0$ ), the usable differential analog input range is from 0 to  $V_{REF}$ . When operating in bipolar mode ( $BIP/UNI = 1$ ), the differential analog input range is from  $-V_{REF} / 2$  to  $+V_{REF} / 2$ . In both unipolar and bipolar modes, the input common-mode voltage can vary as long as the voltage at any single analog input ( $V_{AIN\_P}$ ,

## 4.5MSPS/4MSPS, 5V/3V, 2-Channel, True-Differential, 10-Bit ADCs

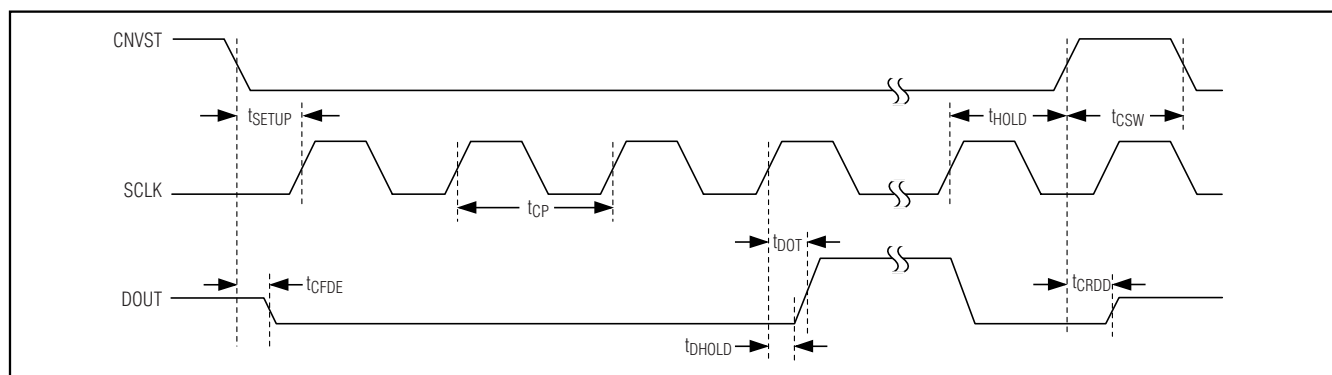


Figure 4. Detailed Serial-Interface Timing

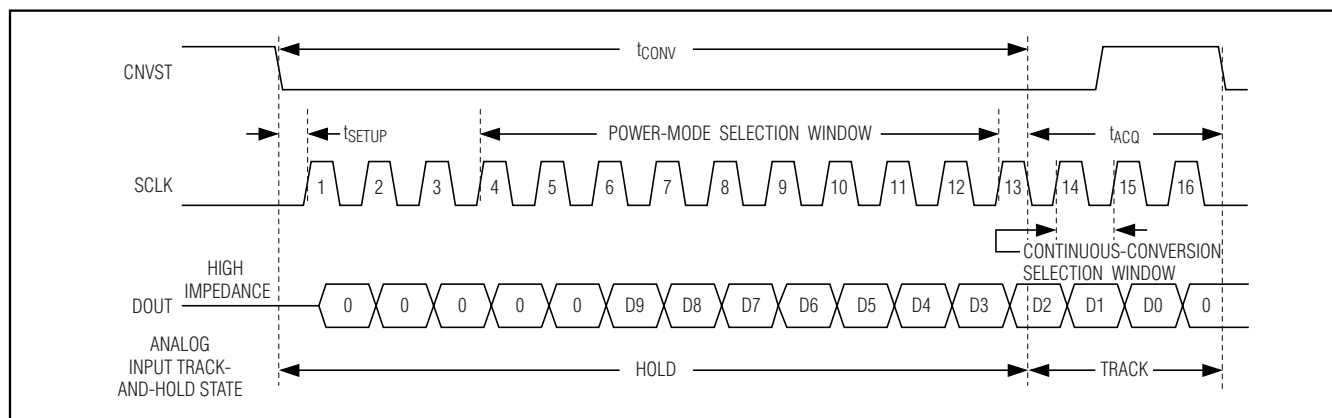


Figure 5. Interface Timing Sequence

VAIN\_N) remains within 50mV of the analog power-supply rails (AVDD, AGND).

As shown in Figure 3, internal protection diodes confine the analog input voltage within the region of the analog power-supply rails (AVDD, AGND) and allow the analog input voltage to swing from AGND - 0.3V to AVDD + 0.3V without damage. Input voltages beyond AGND - 0.3V and AVDD + 0.3V forward bias the internal protection diodes. In this situation, limit the forward diode current to 50mA to avoid damaging the MAX1334/MAX1335.

### Serial Digital Interface

#### Timing and Control

Conversion-start and data-read operations are controlled by the CNVST and SCLK digital inputs. CNVST controls the state of the T/H as well as when a conversion is initiated. CNVST also controls the power-down mode of the device (see the *Partial Power-Down (PPD)* and *Full Power-Down (FPD)* Mode section). SCLK clocks data out of the serial interface and sets the con-

version speed. Figures 4 and 5 show timing diagrams that outline the serial-interface operation.

#### Starting a Conversion

On power-up, the MAX1334/MAX1335 enter full power-down mode. The first rising edge of CNVST exits the full power-down mode and the MAX1334/MAX1335 begin acquiring the analog input. A CNVST falling edge initiates a conversion sequence. The T/H stage holds the input voltage; DOUT changes from high impedance to logic-low; and the ADC begins to convert at the first SCLK rising edge. SCLK is used to drive the conversion process, and it shifts data out of DOUT. SCLK begins shifting out the data after the 6th rising edge of SCLK. DOUT transitions  $t_{DOT}$  after each SCLK's rising edge and remains valid for  $t_{DOUT}$  after the next rising edge. The 6th rising clock edge produces the MSB of the conversion result at DOUT, and the MSB remains valid  $t_{DOUT}$  after the 7th rising edge of SCLK. Sixteen rising SCLK edges are needed to clock out the five leading zeros, 10 data bits, and a trailing zero. For

## 4.5Msps/4Msps, 5V/3V, 2-Channel, True-Differential, 10-Bit ADCs

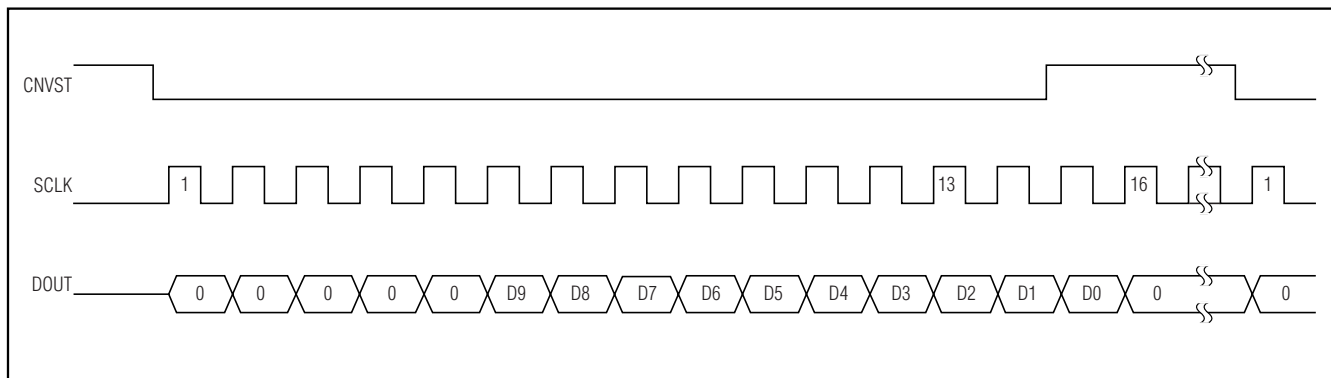


Figure 6. Continuous Conversion with Burst or Continuous Clock

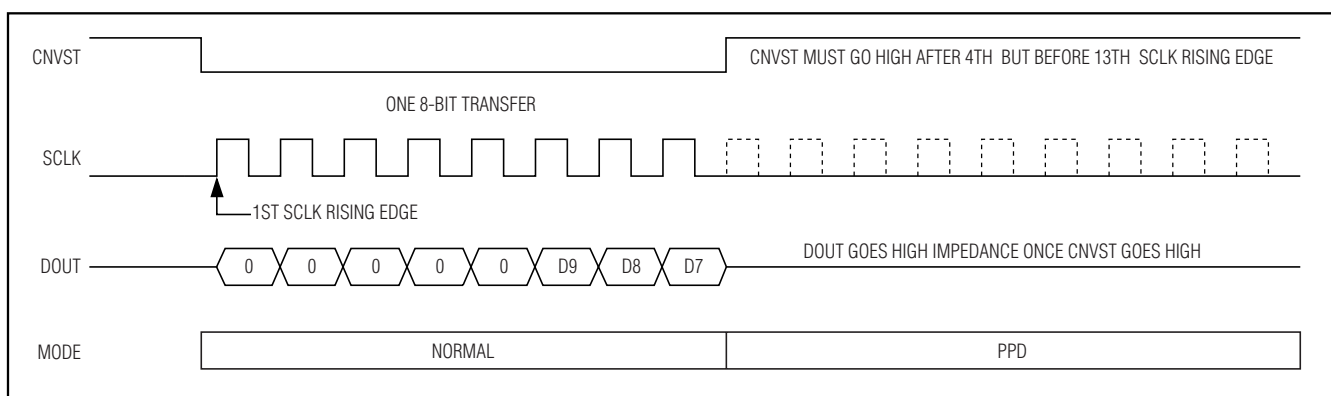


Figure 7. SPI Interface—Partial Power-Down

continuous operation, pull CNVST high between the 14th and the 15th rising edges of SCLK. The highest throughput is achieved when performing continuous conversions. If CNVST is low during the rising edge of the 16th SCLK, the DOUT line goes to a high-impedance state on either CNVST's rising edge or the next SCLK's rising edge, enabling the serial interface to be shared by multiple devices. Figure 6 illustrates a conversion using a typical serial interface.

### Partial Power-Down (PPD) and Full Power-Down (FPD) Mode

Power consumption is reduced significantly by placing the MAX1334/MAX1335 in either partial power-down mode or full power-down mode. Partial power-down mode is ideal for infrequent data sampling and fast wake-up time applications. Once CNVST is transitioned from high to low, pull CNVST high any time after the 4th rising edge of the SCLK but before the 13th rising edge of the SCLK to enter partial power-down mode (see Figure 7). Drive CNVST low and then drive high before

the 4th SCLK to remain in partial power-down mode. This reduces the supply current to 3.3mA. Drive CNVST low and allow at least 13 SCLK cycles to elapse before driving CNVST high to exit partial power-down mode.

Full power-down mode reduces the supply current to 0.2μA and is ideal for infrequent data sampling. To enter full power-down mode, the MAX1334/MAX1335 must first be in partial power-down mode. While in partial power-down mode, repeat the sequence used to enter partial power-down mode to enter full power-down mode (see Figure 8). Drive CNVST low and allow at least 13 SCLK cycles to elapse before driving CNVST high to exit full power-down mode.

Maintain a logic-low or a logic-high on SCLK and all digital inputs at DVDD or DGND while in either partial power-down or full power-down mode to minimize power consumption.

Another way of entering the full power-down mode is using the SHDN input. Drive SHDN to a logic-low to put the device into the full power-down mode. Drive SHDN

## 4.5MSPS/4MSPS, 5V/3V, 2-Channel, True-Differential, 10-Bit ADCs

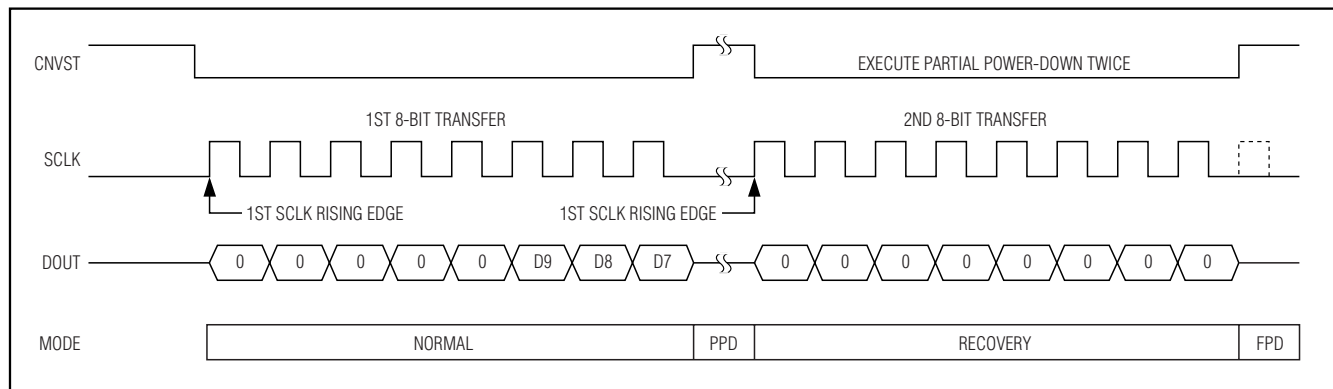


Figure 8. SPI Interface—Full Power-Down

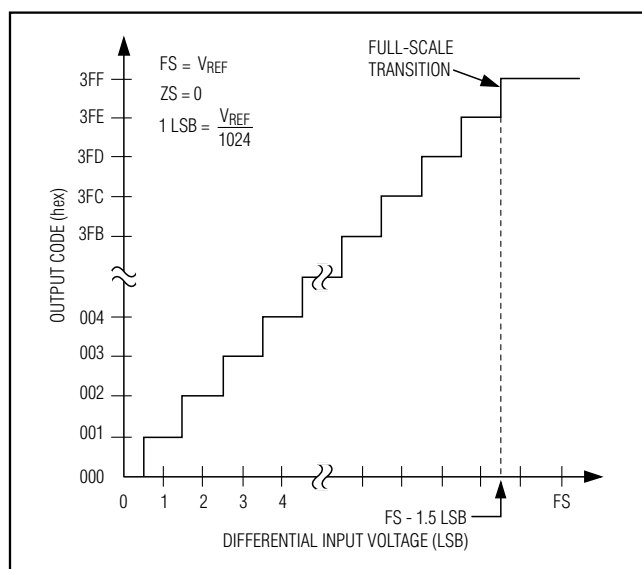


Figure 9. Unipolar Transfer Function

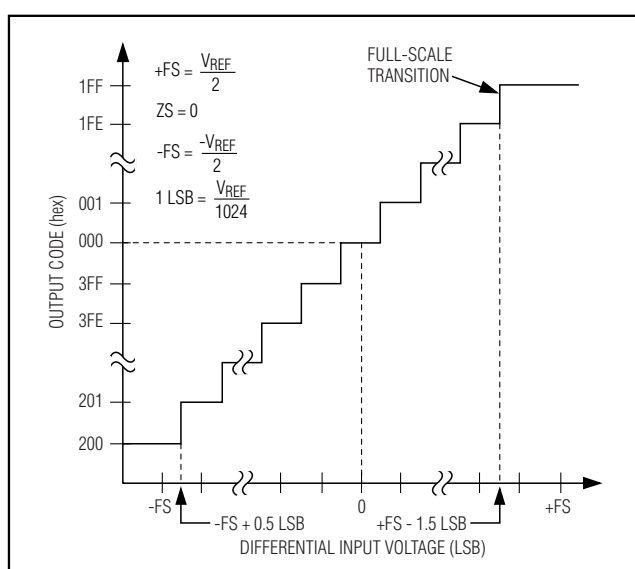


Figure 10. Bipolar Transfer Function

high to exit full power-down mode and return to normal operating mode. SHDN overrides any software-controlled power-down mode and every time it is deasserted, it places the MAX1334/MAX1335 in its normal mode of operation regardless of its previous state.

### Transfer Function

The MAX1334/MAX1335 output is straight binary in unipolar mode and is two's complement in bipolar mode. Figure 9 shows the unipolar transfer function for the MAX1334/MAX1335. Table 1 shows the unipolar relationship between the differential analog input voltage and the digital output code. Figure 10 shows the bipolar transfer function for the MAX1334/MAX1335. Table 2

shows the bipolar relationship between the differential analog input voltage and the digital output code.

Determine the differential analog input voltage as a function of  $V_{REF}$  and the digital output code with the following equation:

$$\Delta V_{AIN} = \text{LSB} \times \text{CODE}_{10} \pm 0.5 \times \text{LSB}$$

where:

$$\Delta V_{AIN} = V_{AIN\_P} - V_{AIN\_N}$$

$$\text{LSB} = \frac{V_{REF}}{2^{10}} = \frac{V_{REF}}{1024}$$



## 4.5Msps/4Msps, 5V/3V, 2-Channel, True-Differential, 10-Bit ADCs

Table 1. Unipolar Code Table (MAX1334)

| BINARY DIGITAL OUTPUT CODE D9–D0 | HEXADECIMAL EQUIVALENT OF D9–D0 | DECIMAL EQUIVALENT OF D9–D0 (CODE <sub>10</sub> ) | DIFFERENTIAL INPUT VOLTAGE (V) (V <sub>REF</sub> = 4.096V) |
|----------------------------------|---------------------------------|---|--|
| 11 1111 1111                     | 0x3FF                           | 1023  | +4.092 ±0.5 LSB  |
| 11 1111 1110                     | 0x3FF                           | 1022  | +4.088 ±0.5 LSB  |
| 10 0000 0001                     | 0x201                           | 513   | +2.052 ±0.5 LSB  |
| 10 0000 0000                     | 0x200                           | 512   | +2.048 ±0.5 LSB  |
| 01 1111 1111                     | 0x1FF                           | 511   | +2.044 ±0.5 LSB  |
| 00 0000 0001                     | 0x001                           | 1   | +0.004 ±0.5 LSB  |
| 00 0000 0000                     | 0x000                           | 0   | +0.000 ±0.5 LSB  |

Table 2. Bipolar Code Table (MAX1335)

| TWO's COMPLEMENT DIGITAL OUTPUT CODE D9–D0 | HEXADECIMAL EQUIVALENT OF D9–D0 | DECIMAL EQUIVALENT OF D9–D0 (CODE <sub>10</sub> ) | DIFFERENTIAL INPUT VOLTAGE (V) (V <sub>REF</sub> = 4.096V) |
|--|---------------------------------|---|--|
| 01 1111 1111                               | 0x1FF                           | +511  | +2.044 ±0.5 LSB  |
| 01 1111 1110                               | 0x1FE                           | +510  | +2.040 ±0.5 LSB  |
| 00 0000 0001                               | 0x001                           | +1  | +0.004 ±0.5 LSB  |
| 00 0000 0000                               | 0x000                           | 0   | 0 ±0.5 LSB   |
| 11 1111 1111                               | 0x3FF                           | -1  | -0.004 ±0.5 LSB  |
| 10 0000 0001                               | 0x201                           | -511  | -2.004 ±0.5 LSB  |
| 10 0000 0000                               | 0x200                           | -512  | -2.048 ±0.5 LSB  |

CODE<sub>10</sub> = the decimal equivalent of the digital output code (see Tables 1 and 2).

±0.5 × LSB represents the quantization error that is inherent to any ADC.

When using a 4.096V reference, 1 LSB equals 4.0mV. When using a 2.5V reference, 1 LSB equals 2.44mV.

### Applications Information

#### External Reference

The MAX1334/MAX1335 use an external reference between 1V and (AV<sub>DD</sub> + 50mV). Bypass REF with a 1μF capacitor in parallel with a 0.1μF capacitor to AGND for best performance (see the *Typical Operating Circuit*).

#### Connection to Standard Interfaces

The MAX1334/MAX1335 serial interface is fully compatible with SPI, QSPI, and MICROWIRE (see Figure 11). If a serial interface is available, set the μC's serial interface in master mode so the μC generates the serial clock. Choose a clock frequency based on the AV<sub>DD</sub> and DV<sub>DD</sub> amplitudes.

#### SPI and MICROWIRE

When using SPI or MICROWIRE, the MAX1334/MAX1335 are compatible with all four modes programmed with the CPHA and CPOL bits in the SPI or MICROWIRE control register. (This control register is in the bus master, not the MAX1334/MAX1335.) Conversion begins with a CNVST falling edge. DOUT goes low, indicating a conversion is in progress. Two consecutive 1-byte reads are required to get the full 10 bits from the ADC. DOUT transitions on SCLK rising edges and is guaranteed to be valid t<sub>DOUT</sub> later and remain valid until t<sub>DHOLD</sub> after the following SCLK rising edge. When using CPOL = 0 and CPHA = 0 or CPOL = 1 and CPHA = 1, the data is clocked into the μC on the



## 4.5MSPS/4MSPS, 5V/3V, 2-Channel, True-Differential, 10-Bit ADCs

following or next SCLK rising edge. When using CPOL = 0 and CPHA = 1 or CPOL = 1 and CPHA = 0, the data is clocked into the  $\mu$ C on the next falling edge. See Figure 11 for connections and Figures 12 and 13 for timing. See the *Timing Characteristics* table to determine the best mode to use.

### QSPI

Unlike SPI, which requires two 1-byte reads to acquire the 10 bits of data from the ADC, QSPI allows acquiring the conversion data with a single 16-bit transfer. The MAX1334/MAX1335 require 16 clock cycles from the  $\mu$ C to clock out the 10 bits of data. Figure 14 shows a transfer using CPOL = 1 and CPHA = 1. The conversion result contains three zeros, followed by the 10 data bits and three trailing zeros with the data in MSB-first format.

### DSP Interface to the TMS320C54\_

The MAX1334/MAX1335 can be directly connected to the TMS320C54\_ family of DSPs from Texas Instruments. Set the DSP to generate its own clocks or use external clock signals. Use either the standard or buffered serial port. Figure 15 shows the simplest interface between the MAX1334/MAX1335 and the TMS320C54\_, where the transmit serial clock (CLKX) drives the receive serial clock (CLKR) and SCLK, and the transmit frame sync (FSX) drives the receive frame sync (FSR) and CNVST.

For continuous conversion, set the serial port to transmit a clock and pulse the frame sync signal for a clock period before data transmission. Use the serial port configuration (SPC) register to set up with internal frame sync (TXM = 1), CLKX driven by an on-chip clock source (MCM = 1), burst mode (FSM = 1), and 16-bit word length (FO = 0).

This setup allows continuous conversions provided that the data-transmit register (DXR) and the data-receive register (DRR) are serviced before the next conversion. Alternately, autobuffering can be enabled when using the buffered serial port to execute conversions and read the data without  $\mu$ C intervention. Connect DVDD to the TMS320C54\_ supply voltage. The word length can be set to 8 bits with FO = 1 to implement the power-down modes. The CNVST pin must idle high to remain in either power-down state.

Another method of connecting the MAX1334/MAX1335 to the TMS320C54\_ is to generate the clock signals external to either device. This connection is shown in Figure 16 where serial clock (CLOCK) drives the receive serial clock (CLKR) and SCLK, and the convert signal (CONVERT) drives the receive frame sync (FSR) and CNVST.

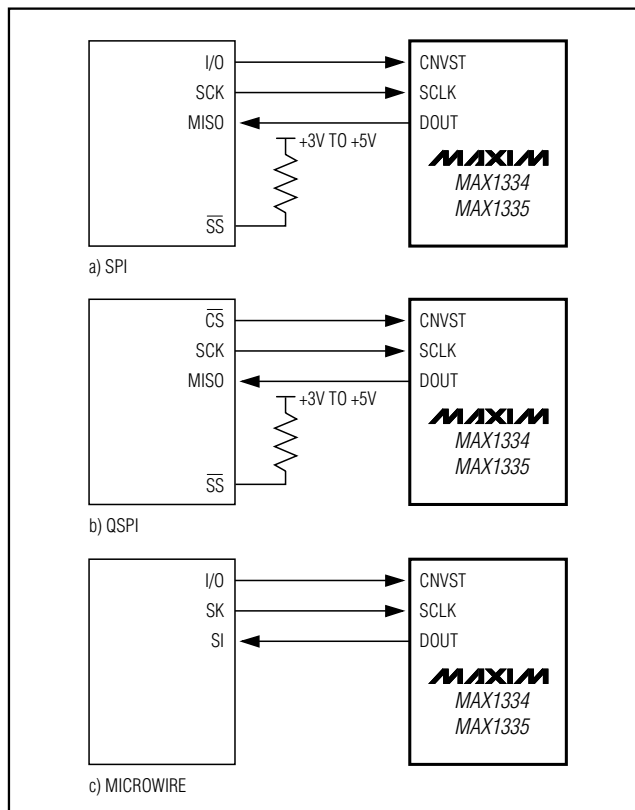


Figure 11. Common Serial-Interface Connections to the MAX1334/MAX1335

The serial port must be set up to accept an external receive clock and external receive frame sync. Write the serial port configuration (SPC) register as follows:

TXM = 0, external frame sync

MCM = 0, CLKX is taken from the CLKX pin

FSM = 1, burst mode

FO = 0, data transmitted/received as 16-bit words

This setup allows continuous conversion provided that the data-receive register (DRR) is serviced before the next conversion. Alternately, autobuffering can be enabled when using the buffered serial port to read the data without  $\mu$ C intervention. Connect DVDD to the TMS320C54\_ supply voltage.

## 4.5Msps/4Msps, 5V/3V, 2-Channel, True-Differential, 10-Bit ADCs

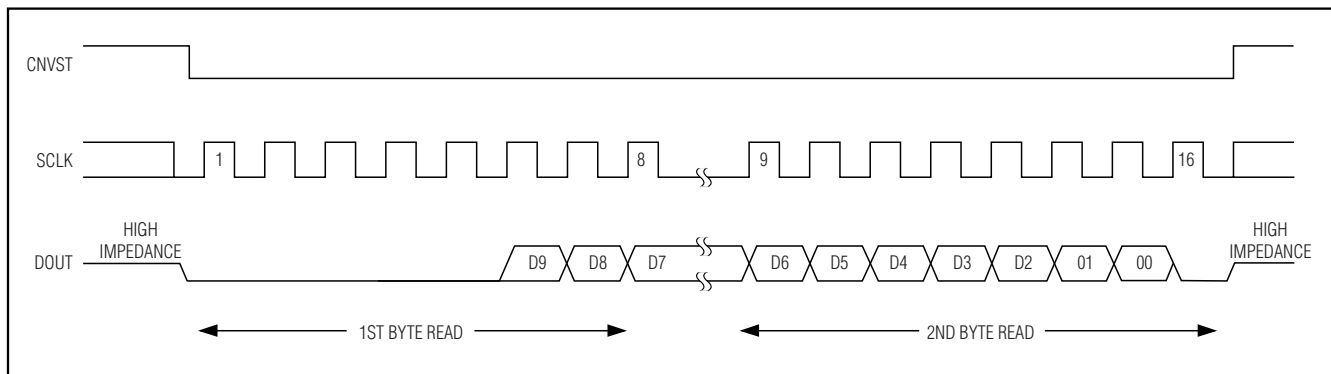


Figure 12. SPI/MICROWIRE Serial-Interface Timing—Single Conversion

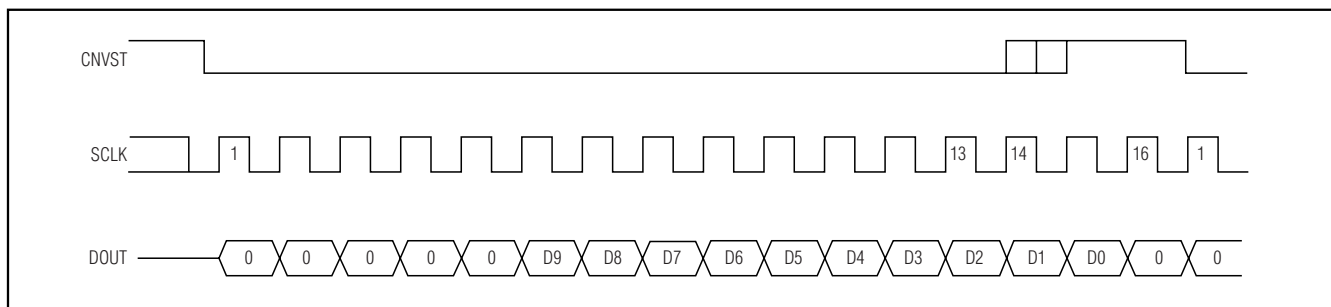


Figure 13. SPI/MICROWIRE Serial-Interface Timing—Continuous Conversion

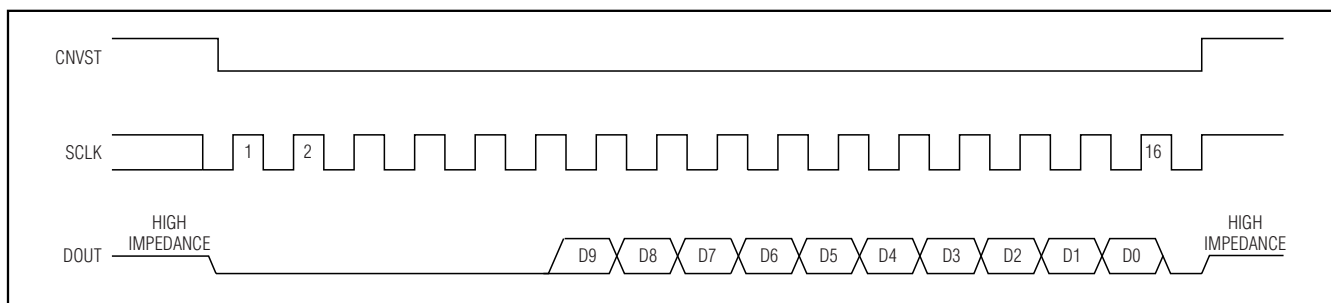


Figure 14. QSPI Serial-Interface Timing

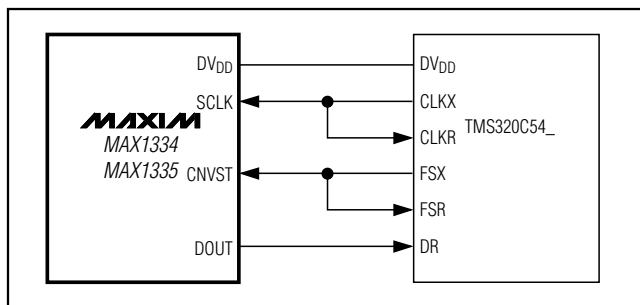


Figure 15. Interfacing to the TMS320C54\_ Internal Clocks

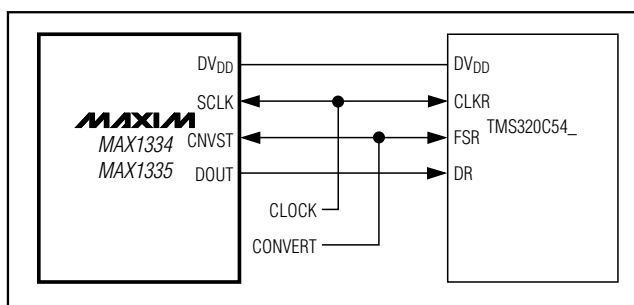


Figure 16. Interfacing to the TMS320C54\_ External Clocks

## 4.5MSPS/4MSPS, 5V/3V, 2-Channel, True-Differential, 10-Bit ADCs

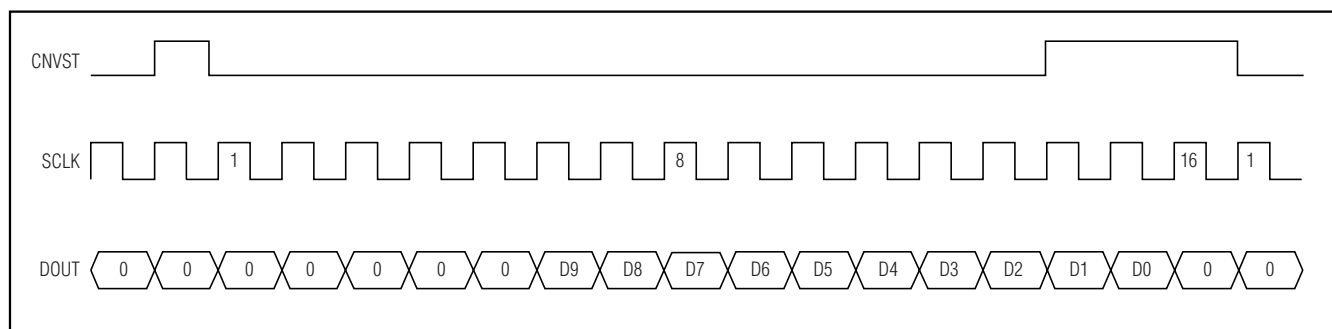


Figure 17. DSP Interface—Continuous Conversion

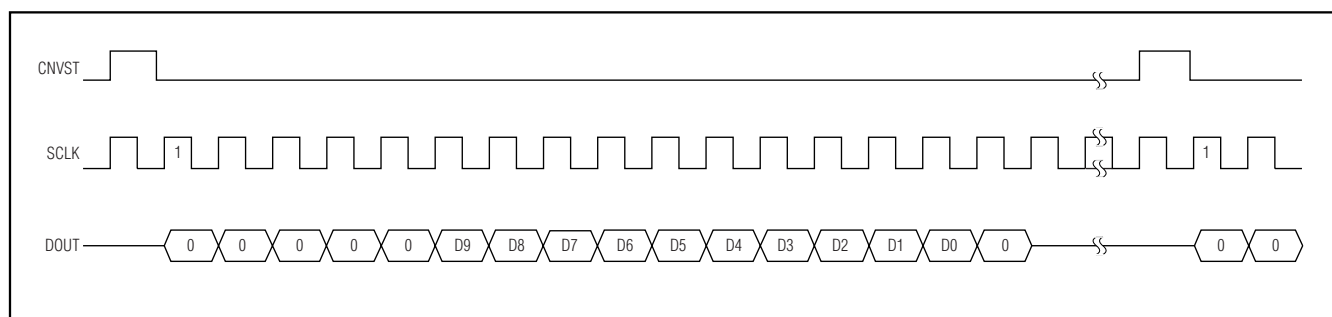


Figure 18. DSP Interface—Single Conversion—Continuous/Burst Clock

The MAX1334/MAX1335 can also be connected to the TMS320C54\_ by using the data-transmit (DX) pin to drive CNVST and the transmit clock (CLKX) generated internally to drive SCLK. A pullup resistor is required on the CNVST signal to keep it high when DX goes high impedance and write (0001)h to the data-transmit register (DXR) continuously for continuous conversions. The power-down modes can be entered by writing (00FF)h to the DXR (see Figures 17 and 18).

### DSP Interface to the ADSP21\_ \_ \_

The MAX1334/MAX1335 can be directly connected to the ADSP21\_ \_ \_ family of DSPs from Analog Devices. Figure 19 shows the direct connection of the MAX1334/MAX1335 to the ADSP21\_ \_ \_. There are two modes of operation that can be programmed to interface with the MAX1334/MAX1335. For continuous conversions, idle CNVST low and pulse it high for one clock cycle during the LSB of the previous transmitted word. Configure the ADSP21\_ \_ \_ STCTL and SRCTL registers for early framing (LAFR = 0) and for an active-high frame (LTFS = 0, LRFS = 0) signal. In this mode, the data-independent frame-sync bit (DITFS = 1) can be selected to eliminate the need for writing to the transmit data register more than once. For single con-

versions, idle CNVST high and pulse it low for the entire conversion. Configure the ADSP21\_ \_ \_ STCTL and SRCTL registers for late framing (LAFR = 1) and for an active-low frame (LTFS = 1, LRFS = 1) signal. This is also the best way to enter the power-down modes by setting the word length to 8 bits (SLEN = 0111). Connect the DVDD pin to the ADSP21\_ \_ \_ supply voltage (see Figures 17 and 18).

### Layout, Grounding, and Bypassing

For best performance, use PC boards. Wire-wrap boards must not be used. Board layout must ensure that digital and analog signal lines are separated from each other. Do not run analog and digital (especially clock) lines parallel to one another, or digital lines underneath the ADC package.

Figure 20 shows the recommended system ground connections. Establish an analog ground point at AGND and a digital ground point at DGND. Connect all other analog grounds to the analog ground point. Connect all digital grounds to the digital ground point. For lowest noise operation, make the power-supply returns as low impedance and as short as possible. Connect the analog ground point to the digital ground

## 4.5Msps/4Msps, 5V/3V, 2-Channel, True-Differential, 10-Bit ADCs

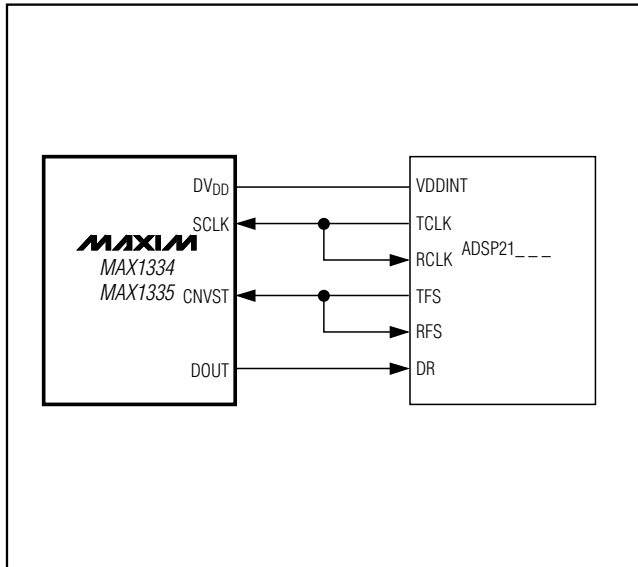


Figure 19. Interfacing to the ADSP21\_...

point together at the IC. Refer to the MAX1334/MAX1335 evaluation kit for a PC board layout example.

High-frequency noise in the power supplies degrades the ADC's performance. Bypass  $AV_{DD}$  to AGND with 0.1 $\mu$ F and 1 $\mu$ F bypass capacitors. Likewise, bypass  $DV_{DD}$  to DGND with 0.1 $\mu$ F and 1 $\mu$ F bypass capacitors. Minimize capacitor lead lengths for best supply noise rejection. To reduce the effects of supply noise, a 10 $\Omega$  resistor can be connected as a lowpass filter to attenuate supply noise (see Figure 20).

### Exposed Paddle

The MAX1334/MAX1335 TQFN package has an exposed paddle on the bottom of the package, providing a very low thermal resistance path for heat removal from the IC, as well as a low inductance path to ground. The pad is electrically connected to AGND on the MAX1334/MAX1335 and must be soldered to the circuit board analog ground plane for proper thermal and electrical performance. Refer to the Maxim Application Note HFAN-08.1: *Thermal Considerations for QFN and Other Exposed Paddle Packages*, for additional information.

### Definitions

#### Integral Nonlinearity (INL)

INL is the deviation of the values on an actual transfer function from a straight line. For the MAX1334/MAX1335, this straight line is between the end points of the transfer function once offset and gain errors have been nullified. INL deviations are measured at every

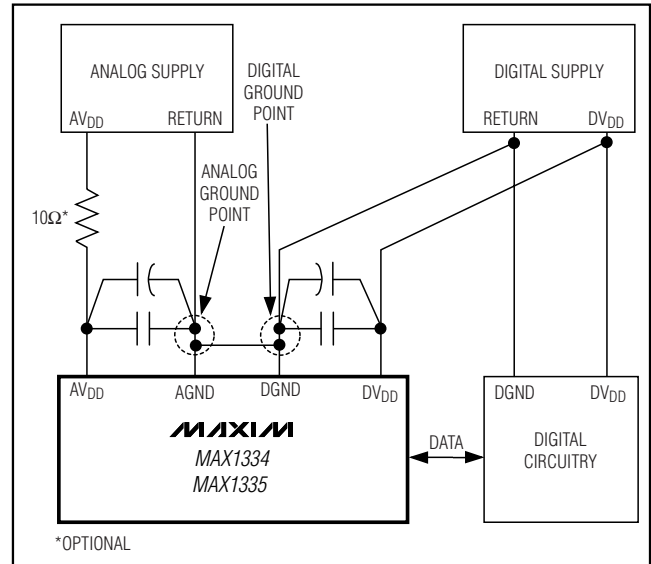


Figure 20. Power-Supply Grounding Condition

step and the worst-case deviation is reported in the *Electrical Characteristics* table.

### Differential Nonlinearity (DNL)

DNL is the difference between an actual step width and the ideal value of 1 LSB. A DNL error specification of less than 1 LSB guarantees no missing codes and a monotonic transfer function. For the MAX1334/MAX1335, DNL deviations are measured at every step and the worst-case deviation is reported in the *Electrical Characteristics* table.

### Offset Error

Offset error is a figure of merit that indicates how well the actual transfer function matches the ideal transfer function at a single point. Typically, the point at which the offset error is specified is at or near the zero-scale of the transfer function or at or near the midscale of the transfer function.

For the MAX1334/MAX1335, operating with a unipolar transfer function, the ideal zero-scale digital output transition from 0x000 to 0x001 occurs at 0.5 LSB above AGND. Unipolar offset error is the amount of deviation between the measured zero-scale transition point and the ideal zero-scale transition point.

For the MAX1334/MAX1335, operating with a bipolar transfer function, the ideal midscale digital output transition from 0x3FF to 0x000 occurs at 0.5 LSB below AGND. Bipolar offset error is the amount of deviation between the measured midscale transition point and the ideal midscale transition point.

## 4.5Msps/4Msps, 5V/3V, 2-Channel, True-Differential, 10-Bit ADCs

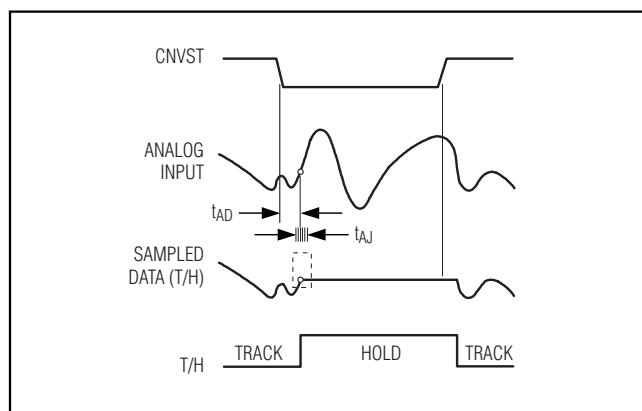


Figure 21. T/H Aperture Timing

### Gain Error

Gain error is a figure of merit that indicates how well the slope of the actual transfer function matches the slope of the ideal transfer function. For the MAX1334/MAX1335, the gain error is the difference of the measured full-scale and zero-scale transition points minus the difference of the ideal full-scale and zero-scale transition points.

For the unipolar input, the full-scale transition point is from 0x3FE to 0x3FF and the zero-scale transition point is from 0x000 to 0x001.

For the bipolar input, the full-scale transition point is from 0x1FE to 0x1FF and the zero-scale transition point is from 0x200 to 0x201.

### Aperture Jitter

Aperture jitter ( $t_{AJ}$ ) is the sample-to-sample variation in the aperture delay.

### Aperture Delay

Aperture delay ( $t_{AD}$ ) is the time defined between the falling edge of the CNVST and the instant when an actual sample is taken (Figure 21).

### Signal-to-Noise Ratio (SNR)

SNR is a dynamic figure of merit that indicates the converter's noise performance.

For a waveform perfectly reconstructed from digital samples, the theoretical maximum SNR is the ratio of the full-scale analog input (RMS value) to the RMS quantization error (residual error). The ideal, theoretical minimum analog-to-digital noise is caused by quantization error only and results directly from the ADC's resolution (N bits):

$$\text{SNR}_{\text{dB}[\text{max}]} = 6.02\text{dB} \times N + 1.76\text{dB}$$

In reality, there are other noise sources such as thermal noise, reference noise, and clock jitter also degrade SNR.

For the MAX1334/MAX1335, SNR is computed by taking the ratio of the RMS signal to the RMS noise. RMS noise includes all spectral components to the Nyquist frequency excluding the fundamental, the first five harmonics, and the DC offset.

### Signal-to-Noise Plus Distortion (SINAD)

SINAD is a dynamic figure of merit that indicates the converter's noise and distortion performance.

SINAD is computed by taking the ratio of the RMS signal to the RMS noise plus distortion. RMS noise plus distortion includes all spectral components to the Nyquist frequency excluding the fundamental and the DC offset:

$$\text{SINAD}(\text{dB}) = 20 \times \log \left[ \frac{\text{SIGNAL}_{\text{RMS}}}{(\text{NOISE} + \text{DISTORTION})_{\text{RMS}}} \right]$$

### Effective Number of Bits (ENOB)

ENOB specifies the global accuracy of an ADC at a specific input frequency and sampling rate. An ideal ADC's error consists of quantization noise only. ENOB for a full-scale sinusoidal input waveform is computed from:

$$\text{ENOB} = \frac{\text{SINAD} - 1.76}{6.02}$$

### Total Harmonic Distortion (THD)

THD is a dynamic figure of merit that indicates how much harmonic distortion the converter adds to the signal.

THD is the ratio of the RMS sum of the first five harmonics of the fundamental signal to the fundamental itself. This is expressed as:

$$\text{THD} = 20 \times \log \left( \frac{\sqrt{V_2^2 + V_3^2 + V_4^2 + V_5^2 + V_6^2}}{V_1} \right)$$

where  $V_1$  is the fundamental amplitude, and  $V_2$  through  $V_6$  are the amplitudes of the 2nd- through 6th-order harmonics.

### Spurious-Free Dynamic Range (SFDR)

SFDR is a dynamic figure of merit that indicates the lowest usable input signal amplitude. SFDR is the ratio of the RMS amplitude of the fundamental (maximum signal component) to the RMS value of the next-largest spurious component, excluding DC offset. SFDR is specified in decibels relative to the carrier (dBc).

## 4.5Msps/4Msps, 5V/3V, 2-Channel, True-Differential, 10-Bit ADCs

### Intermodulation Distortion (IMD)

IMD is the total power of the IM2 to IM5 intermodulation products to the Nyquist frequency relative to the total input power of the two input tones  $f_{IN1}$  and  $f_{IN2}$ . The individual input tone levels are at -7dBFS. The intermodulation products are as follows:

- 2nd-order intermodulation products (IM2):  $f_{IN1} + f_{IN2}$ ,  $f_{IN2} - f_{IN1}$
- 3rd-order intermodulation products (IM3):  $2f_{IN1} - f_{IN2}$ ,  $2f_{IN2} - f_{IN1}$ ,  $2f_{IN1} + f_{IN2}$ ,  $2f_{IN2} + f_{IN1}$
- 4th-order intermodulation products (IM4):  $3f_{IN1} - f_{IN2}$ ,  $3f_{IN2} - f_{IN1}$ ,  $3f_{IN1} + f_{IN2}$ ,  $3f_{IN2} + f_{IN1}$
- 5th-order intermodulation products (IM5):  $3f_{IN1} - 2f_{IN2}$ ,  $3f_{IN2} - 2f_{IN1}$ ,  $3f_{IN1} + 2f_{IN2}$ ,  $3f_{IN2} + 2f_{IN1}$

### Channel-to-Channel Isolation

Channel-to-channel isolation is a figure of merit that indicates how well each analog input is isolated from the others. The channel-to-channel isolation for the MAX1334/MAX1335 is measured by applying a low-frequency 500MHz -0.5dBFS sine wave to the “on” channel while a high-frequency 900MHz -0.5dBFS sine wave is applied to the “off” channel. An FFT is taken for the “on” channel. From the FFT data, channel-to-channel crosstalk is expressed in dB as the power ratio of the 500MHz low-frequency signal applied to the “on” channel and the 900MHz high-frequency crosstalk signal from the “off” channel.

### Full-Power Bandwidth

A large -0.5dBFS analog input signal is applied to an ADC, and the input frequency is swept up to the point where the amplitude of the digitized conversion result has decreased by -3dB. This point is defined as full-power input bandwidth frequency.

### Full-Linear Bandwidth

Full-linear bandwidth is the frequency at which the SINAD is equal to 56dB. The amplitude of the analog input signal is -0.2dBFS.

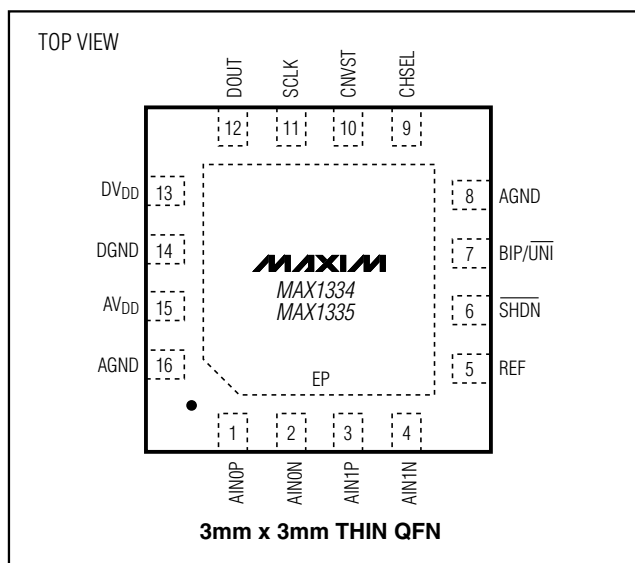
### Small-Signal Bandwidth

A small -20dBFS analog input signal is applied to an ADC so that the signal's slew rate does not limit the ADC's performance. The input frequency is then swept up to the point where the amplitude of the digitized conversion result has decreased by -3dB.

### Power-Supply Rejection (PSR)

PSR is defined as the shift in offset and gain error when the analog power supply is moved from 2.7V to 3.6V.

### Pin Configuration



### Selector Guide

| PART       | AVDD | MAX SAMPLING RATE (Msps) |
|------------|------|--------------------------|
| MAX1334ETE | +5V  | 4.5                      |
| MAX1335ETE | +3V  | 4                        |

### Chip Information

PROCESS: BiCMOS

**MAX1334/MAX1335**

The drawing consists of four main views and a detail view:

- TOP VIEW:** Shows a square package with side length  $E$ . A central square area of size  $D/2 \times E/2$  is shaded and labeled "INDEX AREA". A hatched rectangular area is labeled "AAAA". Dimensions  $D/2$ ,  $E/2$ , and  $E$  are indicated. A feature is dimensioned as  $2x \begin{matrix} \triangle 0.15 \\ C \end{matrix}$ .
- BOTTOM VIEW:** Shows the underside of the package. It includes dimensions for the lead pitch  $E/2$  and overall width  $E$ . A feature is dimensioned as  $2x \begin{matrix} \triangle 0.15 \\ C \end{matrix}$ . A detail callout "DETAIL A" points to a specific feature.
- SIDE VIEW:** Shows the profile of the package. The total height is  $0.08$ . The base is labeled "SEATING PLANE". The top surface has a feature dimensioned as  $\begin{matrix} \triangle 0.10 \\ C \end{matrix}$ . The package is labeled "12, 16L THIN QFN".
- DETAIL A:** A magnified view of the feature indicated in the bottom view. It shows the lead structure with dimensions  $(ND-1) \times$ ,  $D/2$ , and  $D/2$ . A feature is dimensioned as  $\begin{matrix} \triangle 0.10 \\ C \end{matrix}$ . A note "PIN #1 ID" is present.

Additional notes include:

- "(R IS OPTIONAL)" for the lead radius.
- "EVEN TERMINAL" and "ODD TERMINAL" labels for the lead arrangement.
- "PIN #1 ID" for the first pin identification.

**DRAWING NOT TO SCALE.**

| PKG  | 12L 3x3   |      |      | 16L 3x3   |      |      |
|------|-----------|------|------|-----------|------|------|
| REF. | MIN.      | NOM. | MAX. | MIN.      | NOM. | MAX. |
| A    | 0.70      | 0.75 | 0.80 | 0.70      | 0.75 | 0.80 |
| B    | 0.20      | 0.25 | 0.30 | 0.20      | 0.25 | 0.30 |
| D    | 2.90      | 3.00 | 3.10 | 2.90      | 3.00 | 3.10 |
| E    | 2.90      | 3.00 | 3.10 | 2.90      | 3.00 | 3.10 |
| e    | 0.50 BSC. |      |      | 0.50 BSC. |      |      |
| L    | 0.45      | 0.55 | 0.65 | 0.30      | 0.40 | 0.50 |
| N    | 12        |      |      | 16        |      |      |
| ND   | 3         |      |      | 4         |      |      |
| NE   | 3         |      |      | 4         |      |      |
| A1   | 0         | 0.02 | 0.05 | 0         | 0.02 | 0.05 |
| A2   | 0.20 REF  |      |      | 0.20 REF  |      |      |
| K    | 0.25      | -    | -    | 0.25      | -    | -    |

| EXPPOSED PAD VARIATIONS |      |      |      |      |      |      |             |        |                    |
|-------------------------|------|------|------|------|------|------|-------------|--------|--------------------|
| PKG CODES               | D2   |      |      | E2   |      |      | PIN ID      | JEDEC  | DOWN BOARD ALLOWED |
|                         | MIN. | NOM. | MAX. | MIN. | NOM. | MAX. |             |        |                    |
| T1233-1                 | 0.95 | 1.10 | 1.25 | 0.95 | 1.10 | 1.25 | 0.35 x 45°  | WEED-1 | YES                |
| T1233-3                 | 0.95 | 1.10 | 1.25 | 0.95 | 1.10 | 1.25 | 0.35 x 45°  | WEED-1 | NO                 |
| T1233-4                 | 0.95 | 1.10 | 1.25 | 0.95 | 1.10 | 1.25 | 0.35 x 45°  | WEED-1 | YES                |
| T1633-1                 | 0.95 | 1.10 | 1.25 | 0.95 | 1.10 | 1.25 | 0.35 x 45°  | WEED-2 | NO                 |
| T1633-2                 | 0.95 | 1.10 | 1.25 | 0.95 | 1.10 | 1.25 | 0.35 x 45°  | WEED-2 | YES                |
| T1633F-3                | 0.65 | 0.80 | 0.95 | 0.65 | 0.80 | 0.95 | 0.225 x 45° | WEED-2 | N/A                |
| T1633FH-3               | 0.65 | 0.80 | 0.95 | 0.65 | 0.80 | 0.95 | 0.225 x 45° | WEED-2 | N/A                |
| T1633-4                 | 0.95 | 1.10 | 1.25 | 0.95 | 1.10 | 1.25 | 0.35 x 45°  | WEED-2 | NO                 |

## NOTES:

1. DIMENSIONING & TOLERANCING CONFORM TO ASME Y14.5M-1994.
2. ALL DIMENSIONS ARE IN MILLIMETERS, ANGLES ARE IN DEGREES.
3. N IS THE TOTAL NUMBER OF TERMINALS.
4. THE TERMINAL #1 IDENTIFIER AND TERMINAL NUMBERING CONVENTION SHALL CONFORM TO JESD 95-1 SPP-012. DETAILS OF TERMINAL #1 IDENTIFIER ARE OPTIONAL, BUT MUST BE LOCATED WITHIN THE ZONE INDICATED. THE TERMINAL #1 IDENTIFIER MAY BE EITHER A MOLD OR MARKED FEATURE.
5. DIMENSION X1 APPLIES TO METALLIZED TERMINAL AND IS MEASURED BETWEEN 0.20 mm AND 0.25 mm FROM TERMINAL TIP.
6. ND AND NE REFER TO THE NUMBER OF TERMINALS ON EACH D AND E SIDE RESPECTIVELY.
7. DEPOPULATION IS POSSIBLE IN A SYMMETRICAL FASHION.
8. COPPLANAR APPLIES TO THE EXPOSED HEAT SINK SLUG AS WELL AS THE TERMINALS.
9. DRAWING CONFORMS TO JEDEC MO220 REVISION C.
10. MARKING IS FOR PACKAGE ORIENTATION REFERENCE ONLY
11. NUMBER OF LEADS SHOWN ARE FOR REFERENCE ONLY.

|  |                                 |   |        |
|--|---------------------------------|---|--------|
|  <b>DALLAS</b><br>SEMICONDUCTOR |                                 |  |        |
| TITLE PACKAGE OUTLINE<br>12, 16L THIN QFN, 3x3x0.8   |                                 |   |        |
| APPROVAL   | DOCUMENT CONTROL NO.<br>21-0136 | REV.<br>F   | 2<br>2 |

23