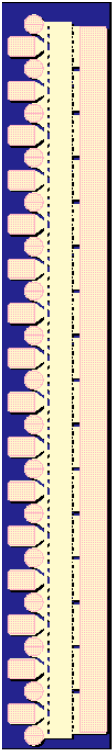
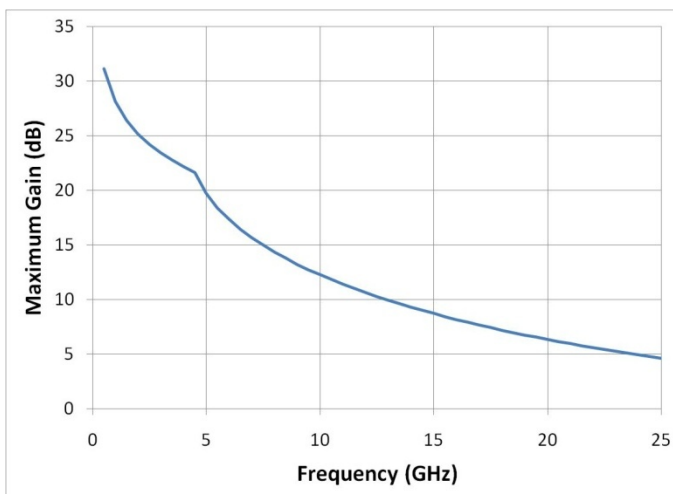


100 Watt Discrete Power GaN on SiC HEMT



Bias conditions: $V_d = 30\text{ V}$, $I_{dq} = 2\text{ A}$, $V_g = -3.6\text{ V}$ Typical



Key Features

- Frequency Range: DC - 18 GHz
- 50 dBm Nominal P_{sat}
- 55% Maximum PAE
- 8.5 dB Nominal Power Gain
- Bias: $V_d = 28 - 35\text{ V}$, $I_{dq} = 2\text{ A}$, $V_g = -3.6\text{ V}$ Typical
- Technology: 0.25 μm Power GaN on SiC
- Chip Dimensions: 0.82 x 4.56 x 0.10 mm

Primary Applications

- Defense & Aerospace
- Broadband Wireless

Product Description

The TriQuint TGF2023-20 is a discrete 20 mm GaN on SiC HEMT which operates from DC-18 GHz. The TGF2023-20 is designed using TriQuint's proven 0.25 μm GaN production process. This process features advanced field plate techniques to optimize microwave power and efficiency at high drain bias operating conditions.

The TGF2023-20 typically provides 50 dBm of saturated output power with power gain of 8 dB. The maximum power added efficiency is 55% which makes the TGF2023-20 appropriate for high efficiency applications.

Lead-free and RoHS compliant

Datasheet subject to change without notice.

Table I
Absolute Maximum Ratings 1/

Symbol	Parameter	Value	Notes
Vd	Drain Voltage	40 V	<u>2/</u>
Vg	Gate Voltage Range	-10 to 0 V	
Id	Drain Current	20 A	<u>2/</u>
Ig	Gate Current	112 mA	
Pin	Input Continuous Wave Power	43 dBm	<u>2/</u>
Tch	Channel Temperature	200 °C	

1/ These ratings represent the maximum operable values for this device. Stresses beyond those listed under “Absolute Maximum Ratings” may cause permanent damage to the device and / or affect device lifetime. These are stress ratings only, and functional operation of the device at these conditions is not implied.

2/ Combinations of supply voltage, supply current, input power, and output power shall not exceed the maximum power dissipation listed in Table IV.

Table II
Recommended Operating Conditions

Symbol	Parameter	Value
Vd	Drain Voltage	28 - 35 V
Idq	Drain Current	2 A
Id_Drive	Drain Current under RF Drive	6 A
Vg	Gate Voltage	-3.6 V

Table III
RF Characterization Table 1/

Bias: Vd = 30 V, Idq = 2000 mA, Vg = -3.6V Typical, Frequency = 10 GHz

SYMBOL	PARAMETER	Vd = 30 V	UNITS
Power Tuned:			
Psat	Saturated Output Power	50	dBm
PAE	Power Added Efficiency	50	%
Gain	Power Gain	8.0	dB
Γ_L 2/	Load Reflection Coefficient	0.96 \angle 177	-
Efficiency Tuned:			
Psat	Saturated Output Power	49	dBm
PAE	Power Added Efficiency	55	%
Gain	Power Gain	8.5	dB
Γ_L 2/	Load Reflection Coefficient	0.97 \angle 176	-

SYMBOL	PARAMETER	Vd = 30 V	UNITS
Power Tuned:			
Rp 3/	Parallel Output Resistance	54.5	Ω ·mm
Cp 3/	Parallel Output Capacitance	0.376	pF/mm
Efficiency Tuned:			
Rp 3/	Parallel Output Resistance	86.0	Ω ·mm
Cp 3/	Parallel Output Capacitance	0.384	pF/mm

- 1/ Values in this table are scaled from measurements on a 1.25 mm GaN/SiC unit cell at 10 GHz
- 2/ Optimum Gamma_Load (Γ_L) for maximum power or maximum PAE at 10 GHz, assuming all gates and drains are connected together
- 3/ Large signal equivalent output network (normalized) (see figure, pg 7)

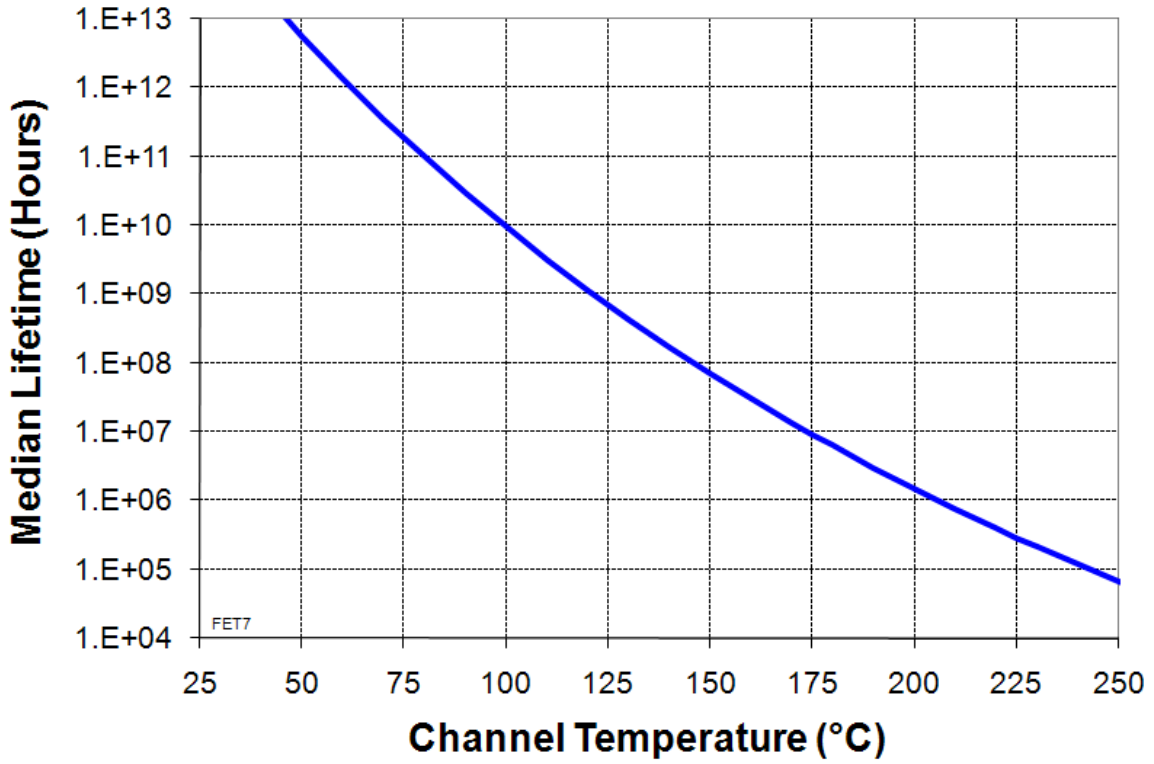
Table IV
Power Dissipation and Thermal Properties 1/

Parameter	Test Conditions	Value	Notes
Maximum Power Dissipation	Tbaseplate = 75 °C	Pd = 128 W Tchannel = 200 °C Tm = 1.5E+6 Hrs	<u>2/ 3/</u>
Thermal Resistance, θ_{jc}	Vd = 30 V Id = 2 A Pd = 60 W Tbaseplate = 70 °C	θ_{jc} = 1.0 (°C/W) Tchannel = 130 °C Tm = 4.4E+8 Hrs	
Thermal Resistance, θ_{jc} Under RF Drive	Vd = 30 V Id = 5.92 A Pout = 50 dBm Pd = 88.8 W Tbaseplate = 70 °C	θ_{jc} = 1.0 (°C/W) Tchannel = 160 °C Tm = 3.2E+7 Hrs	<u>4/</u>
Mounting Temperature	30 Seconds	320 °C	
Storage Temperature		-65 to 150 °C	

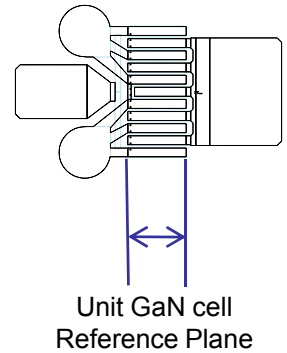
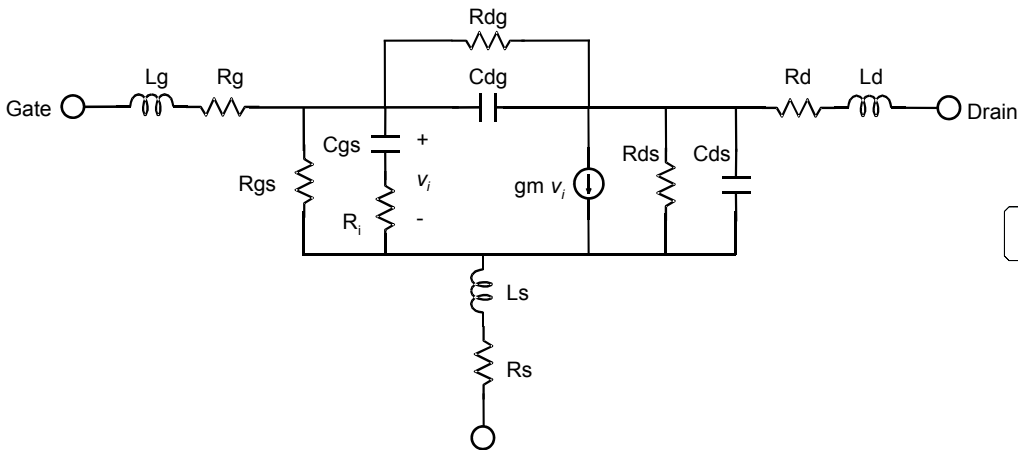
1/ Assumes eutectic attach using 1mil thick 80/20 AuSn mounted to a 10mil CuMo Carrier Plate

2/ Channel operating temperature will directly affect the device median lifetime. For maximum life, it is recommended that channel temperatures be maintained at the lowest possible levels.

Median Lifetime vs Channel Temperature



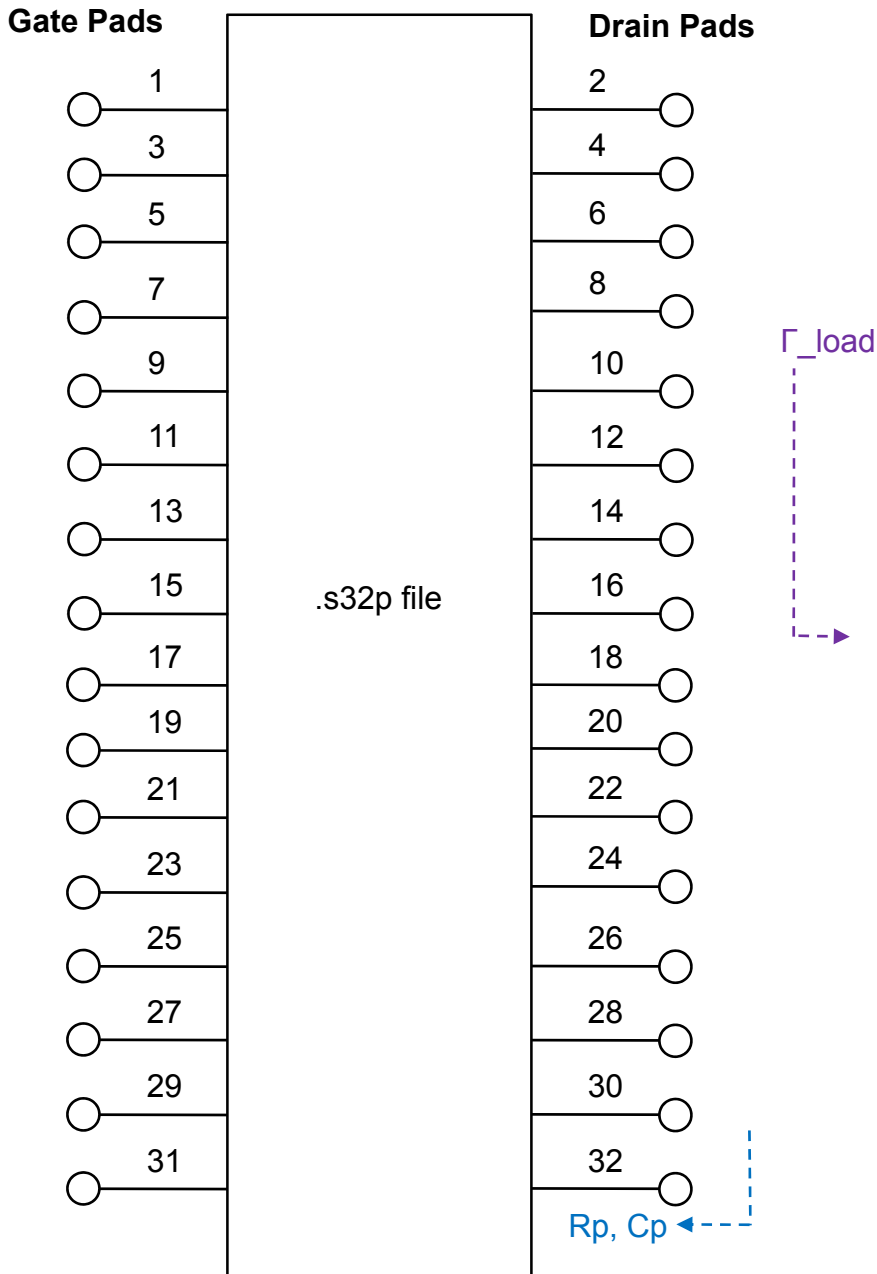
Linear Model for 1.25 mm Unit GaN Cell (UGC)



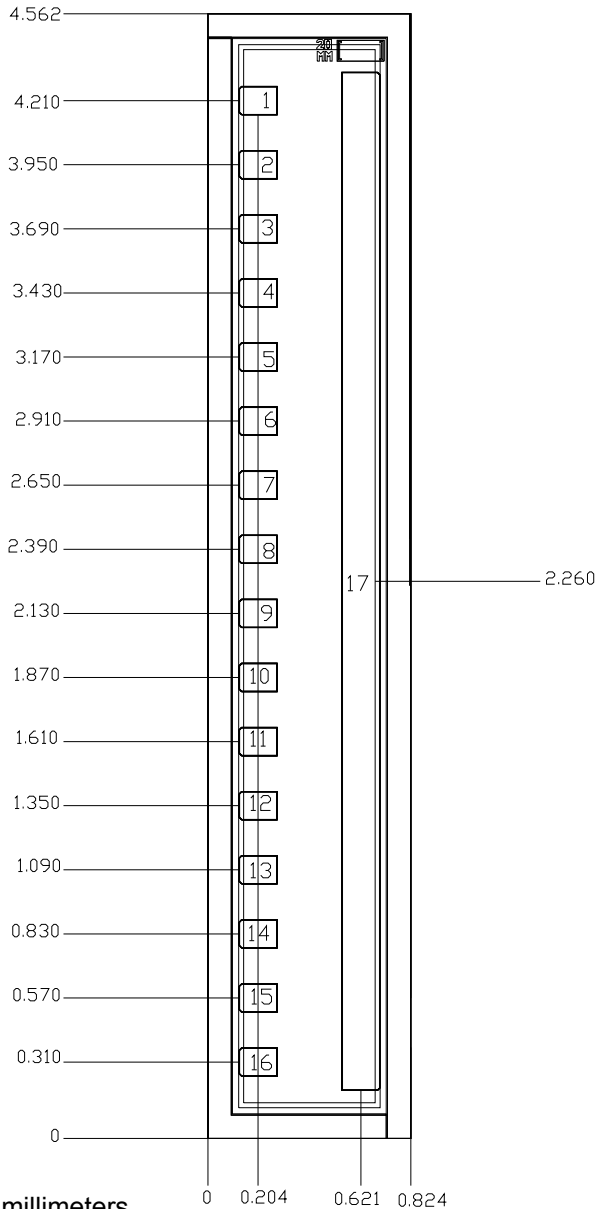
MODEL PARAMETER	Vd = 30V Idq = 125mA	UNITS
Rg	0.42	Ω
Rs	0.13	Ω
Rd	0.70	Ω
gm	0.302	S
Cgs	1.994	pF
Ri	2.62	Ω
Cds	0.275	pF
Rds	98.08	Ω
Cgd	0.068	pF
Tau	0.19	pS
Ls	-0.002	nH
Lg	-0.026	nH
Ld	-0.017	nH
Rgs	37800	Ω
Rgd	303000	Ω

Complete 20mm GaN HEMT Linear Model

Includes 16 UGC, 17 vias, and bonding pads



Mechanical Drawing



Units: millimeters

Thickness: 0.100

Die x,y size tolerance: +/- 0.050

Chip edge to bond pad dimensions are shown to center of pad

Ground is backside of die

Bond Pad #1 - 16	Vg	0.154 x 0.115
Bond Pad #17	Vd	0.154 x 4.130

GaAs MMIC devices are susceptible to damage from Electrostatic Discharge. Proper precautions should be observed during handling, assembly and test.

Assembly Notes

Component placement and adhesive attachment assembly notes:

- Vacuum pencils and/or vacuum collets are the preferred method of pick up.
- Air bridges must be avoided during placement.
- The force impact is critical during auto placement.
- Organic attachment (i.e. epoxy) can be used in low-power applications.
- Curing should be done in a convection oven; proper exhaust is a safety concern.

Reflow process assembly notes:

- Use AuSn (80/20) solder and limit exposure to temperatures above 300°C to 3-4 minutes, maximum.
- An alloy station or conveyor furnace with reducing atmosphere should be used.
- Do not use any kind of flux.
- Coefficient of thermal expansion matching is critical for long-term reliability.
- Devices must be stored in a dry nitrogen atmosphere.

Interconnect process assembly notes:

- Ball bonding is the preferred interconnect technique, except where noted on the assembly diagram.
- Force, time, and ultrasonics are critical bonding parameters.
- Aluminum wire should not be used.
- Devices with small pad sizes should be bonded with 0.0007-inch wire.

Ordering Information

Part	ECCN	Package Style
TGF2023-20	3A001.b.3.b	GaN on SiC Die

GaAs MMIC devices are susceptible to damage from Electrostatic Discharge. Proper precautions should be observed during handling, assembly and test.