



WRA SERIES 1 WATT, SIP 8PIN, DUAL OUTPUT REGULATED ISOLATION 1500VDC DC-DC CONVERTER

FEATURES

- 2:1 WIDE INPUT VOLTAGES RANGE
- EFFICIENCY TO 80%
- UL 94V-0 PACKAGE MATERIAL
- CONTINUOUS SHORT CIRCUIT PROTECTION WITH CURRENT FOLDBACK
- LOW RIPPLE AND NOISE

GENERAL SPECIFICATIONS

- RIPPLE & NOISE (VOUT = 5-9V TYPES) : 100mVp-p MAX (20MHz B.W.)
- RIPPLE & NOISE (VOUT = 12-15V TYPES) : 1% OF VOUT
- ISOLATION VOLTAGE : 1.5KVDC
- SWITCHING FREQUENCY : 50KHz MIN
- SHORT CIRCUIT PROTECTION : CONTINUOUS
- OPERATING TEMPERATURE : -40°C TO 85°C
- STORAGE TEMPERATURE RANGE : -50°C TO 130°C

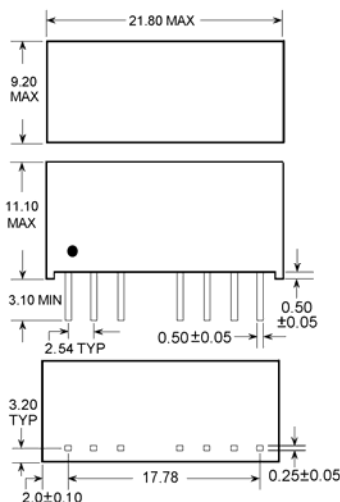
ELECTRICAL SPECIFICATIONS

- INPUT VOLTAGE RANGE : 2 : 1
- OUTPUT VOLTAGE TOLERANCE : ±3%
- LINE REGULATION (REGULATED) : 0.5% MAX
- LOAD REGULATION (REGULATED) : 0.8% MAX
- EFFICIENCY : UP TO 81%

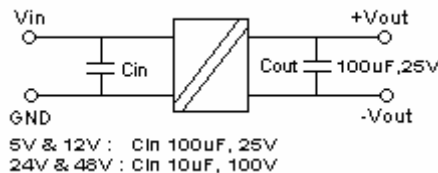
(Typical at nominal input, rated load and 25°C unless otherwise specified)

PART NO.	INPUT VOLTAGE RANGE	OUTPUT VOLTAGE RANGE	OUTPUT CURRENT	EFFICIENCY (%)	MTBF KHrs
WRA0505C(K)S-1W	5-9VDC	5VDC	±100mA	63	>1000
WRA0509C(K)S-1W	5-9VDC	9VDC	±55mA	68	
WRA0512C(K)S-1W	5-9VDC	12VDC	±42mA	69	
WRA0515C(K)S-1W	5-9VDC	15VDC	±33mA	71	
WRA1205C(K)S-1W	9-18VDC	5VDC	±100mA	71	
WRA1209C(K)S-1W	9-18VDC	9VDC	±55mA	76	
WRA1212C(K)S-1W	9-18VDC	12VDC	±42mA	78	
WRA1215C(K)S-1W	9-18VDC	15VDC	±33mA	79	
WRA2405C(K)S-1W	18-36VDC	5VDC	±100mA	71	
WRA2409C(K)S-1W	18-36VDC	9VDC	±55mA	78	
WRA2412C(K)S-1W	18-36VDC	12VDC	±42mA	79	
WRA2415C(K)S-1W	18-36VDC	15VDC	±33mA	81	
WRA4805C(K)S-1W	36-72VDC	5VDC	±100mA	70	
WRA4809C(K)S-1W	36-72VDC	9VDC	±55mA	77	
WRA4812C(K)S-1W	36-72VDC	12VDC	±42mA	79	
WRA4815C(K)S-1W	36-72VDC	15VDC	±33mA	80	

MARKINGS AND DIMENSIONS



RECOMMENDED TEST CIRCUIT



PIN CONNECTION

PIN	SINGLE OUTPUT
1	-INPUT
2	+INPUT
3	CTRL- Control input can (can be left open)
4	NO PIN
5	NE- No external connection allowed
6	+OUTPUT
7	COM
8	-OUTPUT

Dimensions: inches/mm

Unless otherwise specified, all tolerances are ±.005/±0.13