

ESD3Z...BWS Series

Transient Voltage Suppressors

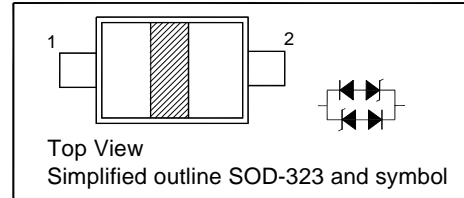
for ESD Protection

Features

- Low clamping voltage
- Low capacitance

PINNING

PIN	DESCRIPTION
1	Cathode
2	Cathode



Absolute Maximum Ratings ($T_a = 25^\circ\text{C}$)

Parameter	Symbol	Value	Unit
Peak Pulse Power ($t_p = 8/20 \mu\text{s}$)	P_{pk}	350	W
IEC61000-4-2 (ESD) Air Contact	V_{ESD}	± 15 ± 8	KV
Operating Temperature Range	T_j	- 55 to + 150	$^\circ\text{C}$
Storage Temperature Range	T_{stg}	- 55 to + 150	$^\circ\text{C}$

Characteristics at $T_a = 25^\circ\text{C}$

Type	Reverse Stand-off Voltage	Reverse Current	Breakdown Voltage		Clamping Voltage ¹⁾		Capacitance		
	V_{RWM}	I_R at V_{RWM}	V_{BR}	at I_{BR}	V_C	at I_{PP}	C_j	at f	at V_R
	Max.(V)	Max.(μA)	Min.(V)	mA	Max.(V)	A	Max.(pF)	MHz	V
ESD3Z3V0BWS	3	20	3.3	1	7.5	1	3	1	0
ESD3Z5V0BWS	5	5	6.1	1	9.8	1	3	1	0
ESD3Z8V0BWS	8	1	8.6	1	13.4	1	3	1	0
ESD3Z12BWS	12	1	13.5	1	19	1	3	1	0
ESD3Z15BWS	15	1	17.39	1	24	1	3	1	0
ESD3Z24BWS	24	1	27.27	1	43	1	3	1	0

¹⁾ $t_p = 8/20 \mu\text{s}$

TOP DYNAMIC



Dated: 23/03/2015 Rev: 04

FIGURE 1
PEAK PULSE POWER VS PULSE TIME

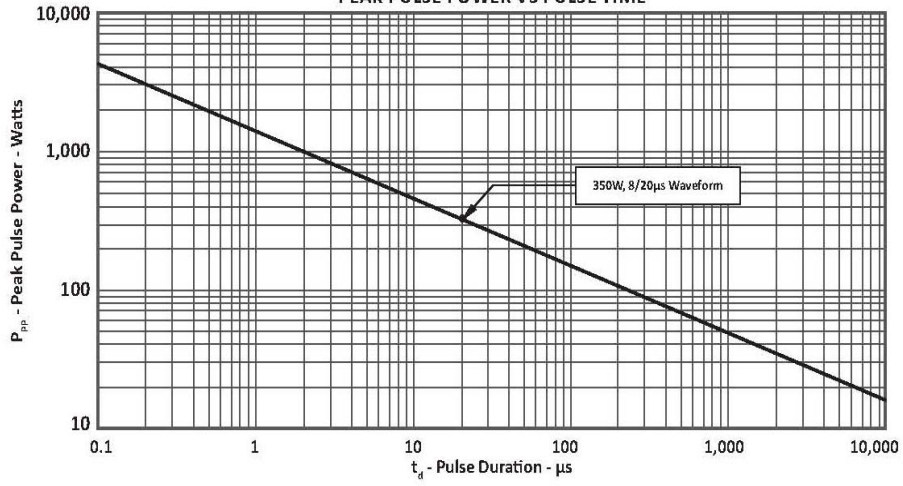
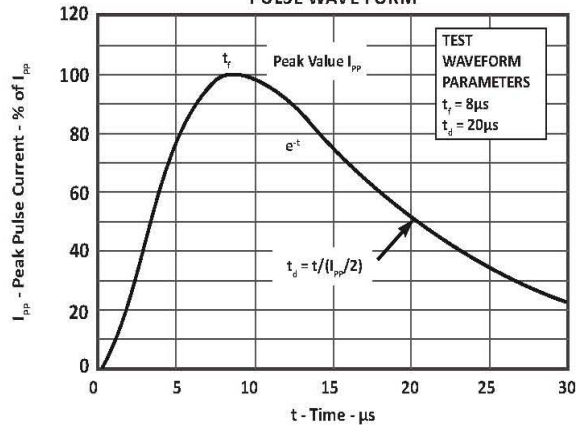


FIGURE 2
PULSE WAVE FORM

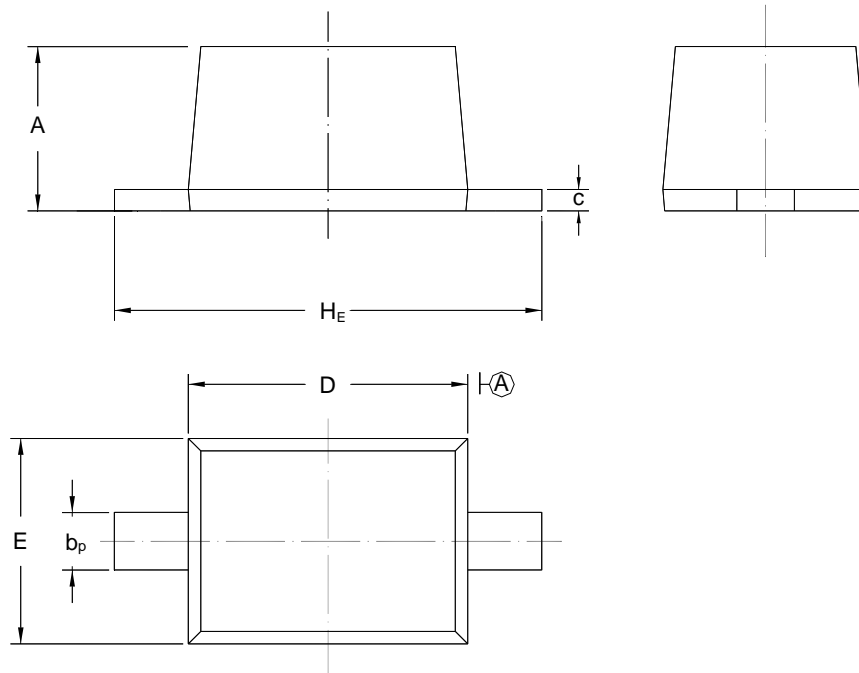


ESD3Z...BWS Series

PACKAGE OUTLINE

Plastic surface mounted package; 2 leads

SOD-323



UNIT	A	b _p	C	D	E	H _E
mm	1.10 0.80	0.40 0.25	0.15 0.10	1.80 1.60	1.35 1.15	2.80 2.30

TOP DYNAMIC



Dated: 23/03/2015 Rev: 04