

# 1SS400BP-HAF

## Silicon Epitaxial Planar Switching Diode

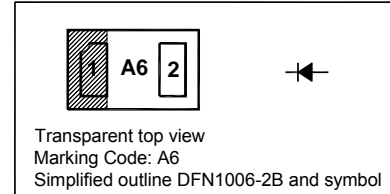
for high speed switching application

### Features

- Ultra small surface mounting type
- High reliability
- Halogen and Antimony Free(HAF), RoHS compliant

### PINNING

PIN	DESCRIPTION
1	Cathode
2	Anode



### Absolute Maximum Ratings ( $T_a = 25^\circ\text{C}$ )

Parameter	Symbol	Value	Unit
Peak Reverse Voltage	$V_{RM}$	90	V
Reverse Voltage	$V_R$	80	V
Average Rectified Forward Current	$I_{F(AV)}$	100	mA
Peak Forward Current	$I_{FM}$	225	mA
Non-repetitive Peak Forward Surge Current(at $t = 1$ s)	$I_{FSM}$	500	mA
Junction Temperature	$T_j$	150	$^\circ\text{C}$
Storage Temperature Range	$T_{stg}$	- 55 to + 150	$^\circ\text{C}$

### Characteristics at $T_a = 25^\circ\text{C}$

Parameter	Symbol	Max.	Unit
Forward Voltage at $I_F = 100$ mA	$V_F$	1.2	V
Reverse Current at $V_R = 80$ V	$I_R$	0.1	$\mu\text{A}$
Capacitance Between Terminals at $V_R = 0.5$ V, $f = 1$ MHz	$C_T$	3	pF
Reverse Recovery Time at $V_R = 6$ V, $I_F = 10$ mA, $R_L = 100$ $\Omega$	$t_{rr}$	4	ns

**TOP DYNAMIC**



ISO14001 : 2004 Certificate No. 121505007  
ISO 9001 : 2008 Certificate No. 50114012  
OHSAS 18001 : 2007 Certificate No. 05131508008  
IECQ QC 080000 Certificate No. E24H00074UM2

Dated : 13/04/2016 Rev: 01

# 1SS400BP-HAF

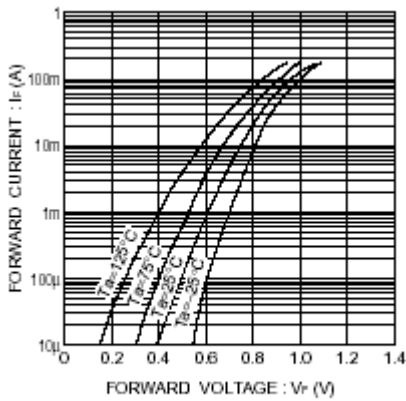


Fig.1 Forward characteristics

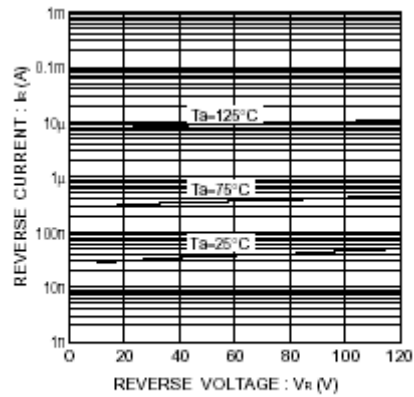


Fig.2 Reverse characteristics

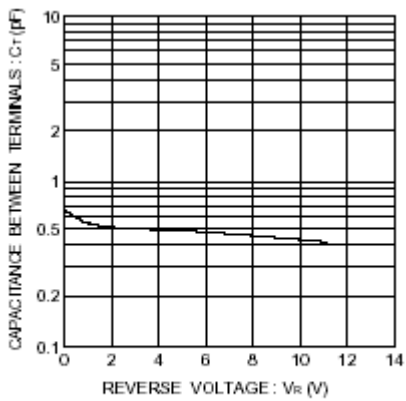


Fig.3 Capacitance between terminals

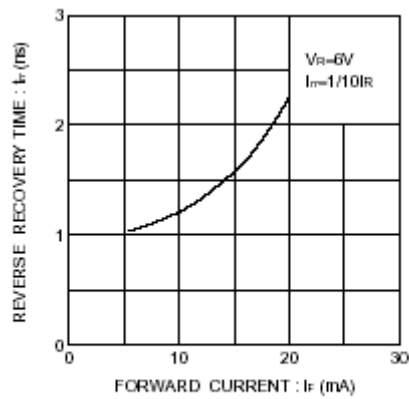


Fig.4 Reverse recovery time characteristics

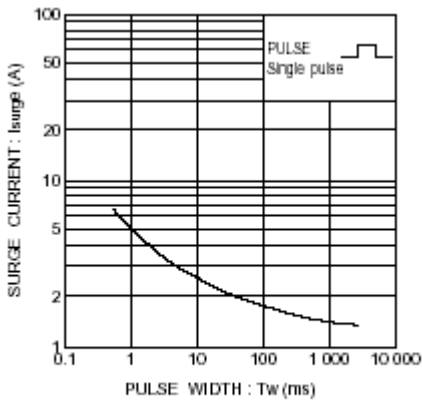


Fig.5 Surge current characteristics

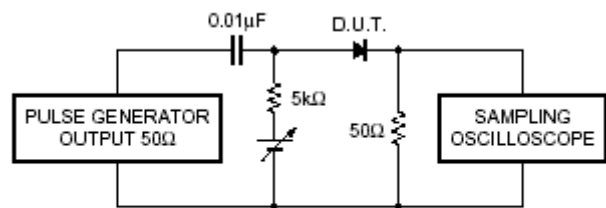


Fig.6 Reverse recovery time ( $t_r$ ) measurement circuit

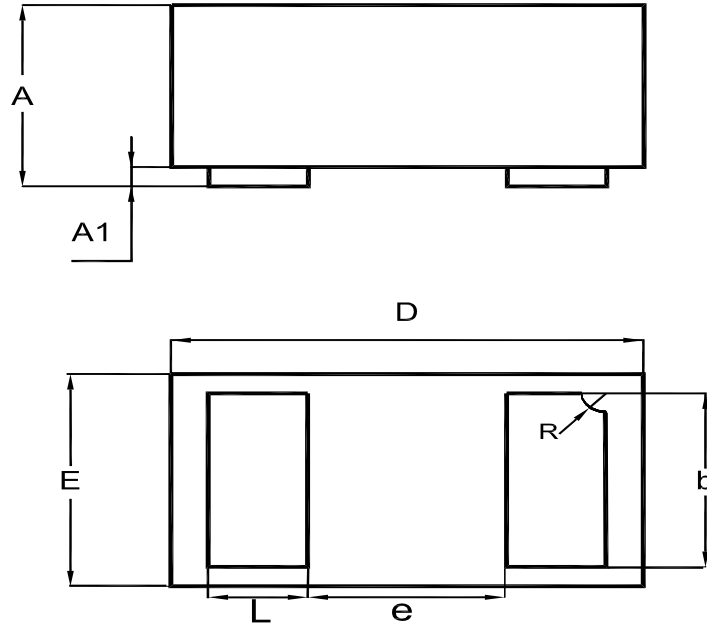
**TOP DYNAMIC**

# 1SS400BP-HAF

## PACKAGE OUTLINE

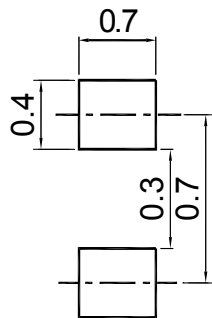
Plastic surface mounted package

DFN1006-2B



UNIT	A	A1	b	D	E	e	L	R
mm	0.40 0.36	0.05 0	0.55 0.45	1.05 0.95	0.65 0.55	0.4	0.3 0.2	0.15 0.05

## Recommended Soldering Footprint



Package	Tape Width (mm)	Pitch		Reel Size		Per Reel Packing Quantity
		mm	inch	mm	inch	
DFN1006-2B	8	4 ± 0.1	0.157 ± 0.004	178	7	5,000

**TOP DYNAMIC**



Dated : 13/04/2016 Rev: 01