

EMC Components

ACF Series ACF321825, 451832 Types

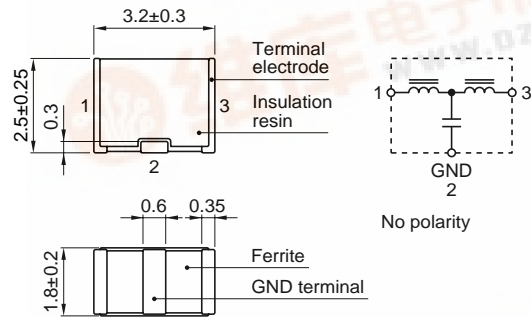
3-Terminal Filters for Signal Line and DC Power Line SMD

FEATURES

- The ACF series are T-type EMC filters incorporating ferrite chip beads and multilayer ceramic chip capacitors.
- The external structure consists entirely of ferrite, enabling these parts to achieve superior attenuation characteristics despite their extremely compact dimensions.
- Because they can be mounted on edge, the ACF series are ideal for high-density circuit configurations.
- Available for reflow soldering.

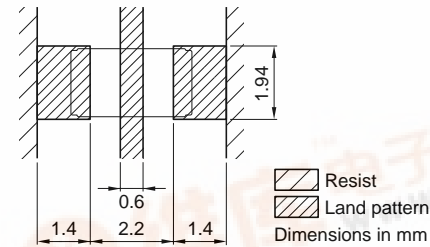
ACF321825 TYPE

SHAPES AND DIMENSIONS/CIRCUIT DIAGRAM



RECOMMENDED PC BOARD PATTERN

REFLOW SOLDERING

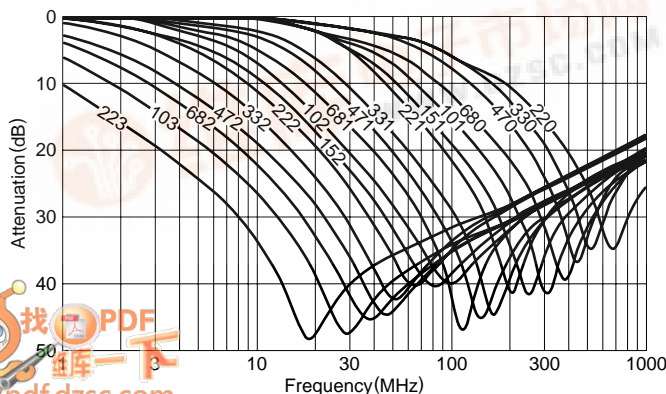


ELECTRICAL CHARACTERISTICS

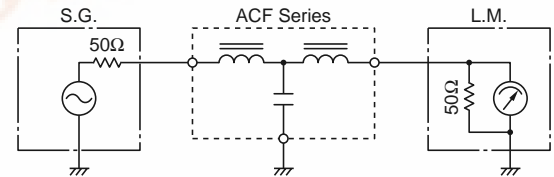
Part No.	Maximum attenuation frequency (MHz)	25dB attenuation frequency range (MHz)	Rated voltage Edc (V)max.	Rated current (mA)max.	DC resistance (Ω)max. [Terminal No.1 to 3]	Insulation resistance (MΩ)min. [Terminal No.1 to 2/No.2 to 3]
ACF321825-223-T	17	11 to 55	20	300	0.15	1000
ACF321825-103-T	27	17 to 60	20	300	0.15	1000
ACF321825-682-T	37	22 to 75	20	300	0.15	1000
ACF321825-472-T	45	30 to 85	20	300	0.15	1000
ACF321825-332-T	55	37 to 90	20	300	0.15	1000
ACF321825-222-T	65	45 to 105	20	300	0.15	1000
ACF321825-152-T	80	60 to 115	20	300	0.15	1000
ACF321825-102-T	100	80 to 140	20	300	0.15	1000
ACF321825-681-T	120	95 to 150	20	300	0.15	1000
ACF321825-471-T	145	120 to 180	20	300	0.15	1000
ACF321825-331-T	165	130 to 210	20	300	0.15	1000
ACF321825-221-T	200	170 to 250	20	300	0.15	1000
ACF321825-151-T	240	205 to 280	20	300	0.15	1000
ACF321825-101-T	300	265 to 340	20	300	0.15	1000
ACF321825-680-T	370	340 to 420	20	300	0.15	1000
ACF321825-470-T	450	420 to 500	20	300	0.15	1000
ACF321825-330-T	530	500 to 600	20	300	0.15	1000
ACF321825-220-T	650	600 to 700	20	300	0.15	1000

TYPICAL ELECTRICAL CHARACTERISTICS

ATTENUATION vs. FREQUENCY CHARACTERISTICS



MEASURING CIRCUIT



Specifications which provide more details for the proper and safe use of the described product are available upon request.

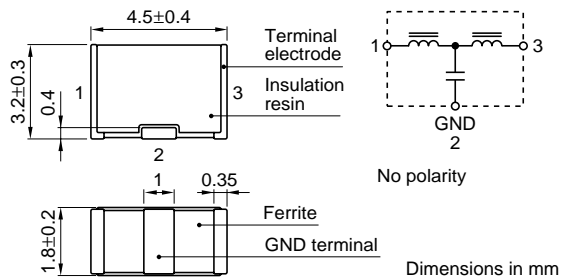
EMC Components

ACF Series ACF321825, 451832 Types

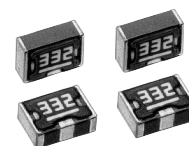
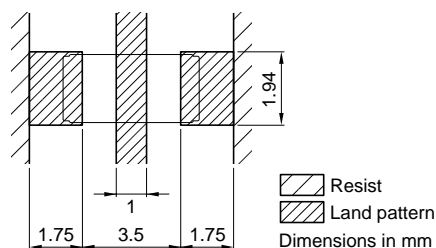
3-Terminal Filters for Signal Line and DC Power Line SMD

ACF451832 TYPE

SHAPES AND DIMENSIONS/CIRCUIT DIAGRAM



RECOMMENDED PC BOARD PATTERN REFLOW SOLDERING

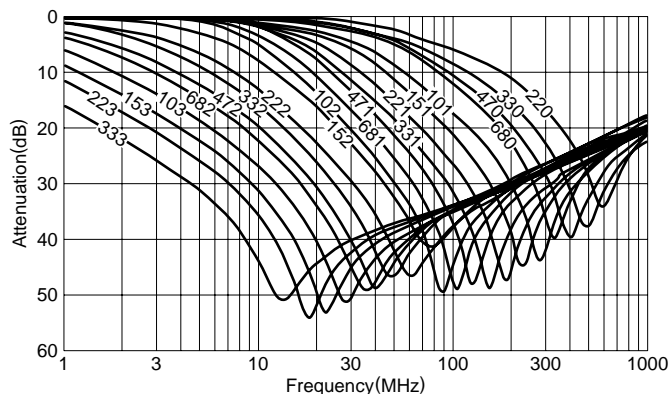


ELECTRICAL CHARACTERISTICS

Part No.	Maximum attenuation frequency (MHz)	25dB attenuation frequency range (MHz)	Rated voltage Edc (V)max.	Rated current (mA)max.	DC resistance (Ω)max. [Terminal No.1 to 3]	Insulation resistance (MΩ)min. [Terminal No.1 to 2/No.2 to 3]
ACF451832-333-T	12	7 to 60	50	300	0.15	1000
ACF451832-223-T	15	9 to 65	50	300	0.15	1000
ACF451832-153-T	18	11 to 70	50	300	0.15	1000
ACF451832-103-T	23	15 to 75	50	300	0.15	1000
ACF451832-682-T	35	20 to 85	50	300	0.15	1000
ACF451832-472-T	40	25 to 95	50	300	0.15	1000
ACF451832-332-T	50	35 to 100	50	300	0.15	1000
ACF451832-222-T	60	40 to 110	50	300	0.15	1000
ACF451832-152-T	75	50 to 130	50	300	0.15	1000
ACF451832-102-T	90	65 to 150	50	300	0.15	1000
ACF451832-681-T	105	75 to 160	50	300	0.15	1000
ACF451832-471-T	125	95 to 180	50	300	0.15	1000
ACF451832-331-T	150	115 to 205	50	300	0.15	1000
ACF451832-221-T	190	150 to 250	50	300	0.15	1000
ACF451832-151-T	230	190 to 290	50	300	0.15	1000
ACF451832-101-T	280	235 to 335	50	300	0.15	1000
ACF451832-680-T	340	295 to 395	50	300	0.15	1000
ACF451832-470-T	410	360 to 460	50	300	0.15	1000
ACF451832-330-T	500	450 to 550	50	300	0.15	1000
ACF451832-220-T	600	550 to 650	50	300	0.15	1000

TYPICAL ELECTRICAL CHARACTERISTICS

ATTENUATION vs. FREQUENCY CHARACTERISTICS



MEASURING CIRCUIT

