

Adaptenuators

50Ω, 3,6,10 dB, DC to 2000 MHz

Type-SMA/BNC
Type-N/BNC

Features

- improved interface matching
- wideband, DC-2000 MHz, useable to 4 GHz
- excellent VSWR, 1.1:1 typ.
- excellent flatness, ±0.1 dB typ.
- rugged unibody construction

Applications

- instrumentation
- provides attenuation and connector type change
- minimizes hardware

Electrical Specifications

MODEL NO.	CONNECTOR TYPE		FREQ. (MHz)	ATTENUATION (dB)					VSWR (:1)			CASE STYLE	PRICE \$						
				Nom.	Flatness*			L	M	U									
					Typ.	Max.	Typ.				Max.			Typ.	Max.				
	SM-BM-3	SMA-Male	BNC-Male	DC-2000	3±0.3	0.05	0.15	0.10	0.20	0.15	0.25	1.1	1.2	1.1	1.2	1.2	1.25	DJ869	19.95
	SM-BM-6	SMA-Male	BNC-Male	DC-2000	6±0.3	0.05	0.15	0.10	0.20	0.15	0.25	1.1	1.2	1.1	1.2	1.2	1.25	DJ869	19.95
	SM-BM-10	SMA-Male	BNC-Male	DC-2000	10±0.3	0.05	0.10	0.10	0.15	0.10	0.20	1.1	1.2	1.1	1.3	1.2	1.25	DJ869	19.95
	SF-BM-3	SMA-Female	BNC-Male	DC-2000	3±0.3	0.05	0.15	0.10	0.20	0.15	0.25	1.1	1.2	1.1	1.2	1.2	1.25	DJ870	19.95
	SF-BM-6	SMA-Female	BNC-Male	DC-2000	6±0.3	0.05	0.15	0.10	0.20	0.15	0.25	1.1	1.2	1.1	1.2	1.2	1.25	DJ870	19.95
	SF-BM-10	SMA-Female	BNC-Male	DC-2000	10±0.3	0.05	0.15	0.10	0.15	0.10	0.20	1.1	1.2	1.1	1.3	1.2	1.25	DJ870	19.95
	SM-BF-3	SMA-Male	BNC-Fem	DC-2000	3±0.3	0.05	0.15	0.10	0.20	0.15	0.25	1.1	1.2	1.1	1.2	1.2	1.25	DJ871	19.95
	SM-BF-6	SMA-Male	BNC-Fem	DC-2000	6±0.3	0.05	0.15	0.10	0.20	0.15	0.25	1.1	1.2	1.1	1.2	1.2	1.25	DJ871	19.95
	SM-BF-10	SMA-Male	BNC-Fem	DC-2000	10±0.3	0.05	0.15	0.10	0.15	0.10	0.20	1.1	1.2	1.1	1.3	1.2	1.25	DJ871	19.95
	SF-BF-3	SMA-Female	BNC-Fem	DC-2000	3±0.3	0.05	0.15	0.10	0.20	0.15	0.25	1.1	1.2	1.1	1.2	1.2	1.25	DJ872	19.95
	SF-BF-6	SMA-Female	BNC-Fem	DC-2000	6±0.3	0.05	0.15	0.10	0.20	0.15	0.25	1.1	1.2	1.1	1.2	1.2	1.25	DJ872	19.95
	SF-BF-10	SMA-Female	BNC-Fem	DC-2000	10±0.3	0.05	0.10	0.10	0.15	0.10	0.20	1.1	1.2	1.1	1.3	1.2	1.25	DJ872	19.95
	NM-BM-3	N-Male	BNC-Male	DC-2000	3±0.3	0.10	0.20	0.20	0.25	0.20	0.30	1.1	1.2	1.1	1.2	1.2	1.30	DJ865	19.95
	NM-BM-6	N-Male	BNC-Male	DC-2000	6±0.3	0.05	0.15	0.15	0.25	0.20	0.25	1.1	1.2	1.1	1.2	1.2	1.25	DJ865	19.95
	NM-BM-10	N-Male	BNC-Male	DC-2000	10±0.3	0.05	0.15	0.15	0.25	0.20	0.25	1.1	1.2	1.1	1.3	1.2	1.25	DJ865	19.95
	NF-BM-3	N-Female	BNC-Male	DC-2000	3±0.3	0.05	0.15	0.10	0.25	0.17	0.25	1.1	1.2	1.1	1.2	1.2	1.25	DJ867	19.95
	NF-BM-6	N-Female	BNC-Male	DC-2000	6±0.3	0.05	0.15	0.10	0.20	0.15	0.25	1.1	1.2	1.1	1.2	1.2	1.25	DJ867	19.95
	NF-BM-10	N-Female	BNC-Male	DC-2000	10±0.3	0.05	0.15	0.10	0.25	0.15	0.30	1.1	1.2	1.1	1.3	1.2	1.25	DJ867	19.95
	NM-BF-3	N-Male	BNC-Fem	DC-2000	3±0.3	0.05	0.15	0.10	0.20	0.15	0.25	1.1	1.2	1.1	1.2	1.2	1.25	DJ866	19.95
	NM-BF-6	N-Male	BNC-Fem	DC-2000	6±0.3	0.05	0.15	0.10	0.20	0.15	0.25	1.1	1.2	1.1	1.2	1.2	1.25	DJ866	19.95
	NM-BF-10	N-Male	BNC-Fem	DC-2000	10±0.3	0.05	0.15	0.15	0.25	0.20	0.30	1.1	1.2	1.1	1.2	1.2	1.25	DJ866	19.95
	NF-BF-3	N-Female	BNC-Fem	DC-2000	3±0.3	0.05	0.15	0.10	0.20	0.15	0.25	1.1	1.2	1.1	1.2	1.2	1.25	DJ868	19.95
	NF-BF-6	N-Female	BNC-Fem	DC-2000	6±0.3	0.05	0.15	0.10	0.20	0.15	0.25	1.1	1.2	1.1	1.2	1.2	1.25	DJ868	19.95
	NF-BF-10	N-Female	BNC-Fem	DC-2000	10±0.3	0.05	0.15	0.10	0.15	0.10	0.20	1.1	1.2	1.1	1.3	1.2	1.25	DJ868	19.95

* Flatness defined as peak to peak attenuation over band divided by 2

L= DC-500 MHz M= DC-1000 MHz U= DC- f_u MHz

Maximum Ratings

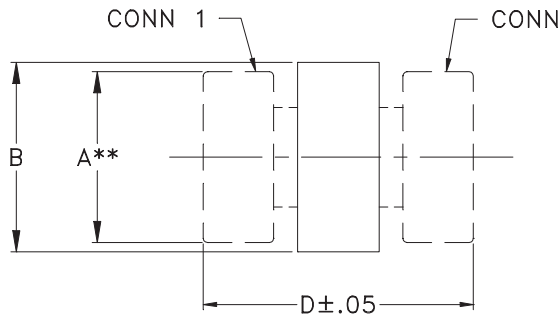
Operating Temperature	-55°C to 100°C
Storage Temperature	-55°C to 100°C
Input Power	0.5W Max.



Adaptenuators

Type-SMA/BNC
Type-N/BNC

Outline Drawing



** DIM IS ACROSS FLATS
B - OVERALL ADAPTER DIMENSION
BODY/CONNECTOR SHAPE VARIES

Outline Dimensions (inch mm)

Case No.	A	B	D	wt. grams
DJ865	.812 20.62	.88 22.35	2.25 57.15	63.8
DJ866	.812 20.62	.88 22.35	2.03 51.56	57.0
DJ867	—	.73 18.54	2.00 50.80	48.2
DJ868	—	.73 18.54	1.79 45.47	40.2
DJ869	.312 7.92	.61 15.49	1.89 48.01	25.8
DJ870	—	.61 15.49	1.69 42.93	24.0
DJ871	.312 7.92	.55 13.97	1.68 42.67	18.8
DJ872	—	.55 13.97	1.47 37.34	16.2