



SAW Components

Data Sheet B4050

Data Sheet

A large, stylized EPCOS logo is superimposed over a grayscale image of a globe. The logo is rendered in a light, glowing white color, making it stand out against the darker background of the globe.



SAW Components

B4050

Low Loss Filter

1575.42 MHz

Data Sheet



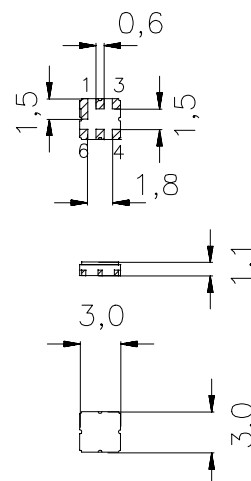
Ceramic package **DCC6D**

Features

- Low loss RF filter for GPS receivers
- Usable passband 2,4 MHz
- Low insertion attenuation, low amplitude ripple
- Unbalanced to balanced operation
- Ceramic package for **Surface Mounted Technology (SMT)**

Terminals

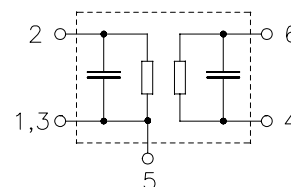
- Ni, gold-plated



Dimensions in mm, approx. weight 0,037 g

Pin configuration

2	Input, unbalanced
4, 6	Output, balanced
1, 3, 5	To be grounded
1, 3, 5	Case ground



Type	Ordering code	Marking and Package according to	Packing according to
B4050	B39162-B4050-U510	C61157-A7-A68	F61074-V8089-Z000

Electrostatic Sensitive Device (ESD)

Maximum ratings

Operable temperature range	T	-40 / +85	°C	
Storage temperature range	T_{stg}	-40 / +85	°C	
DC voltage	V_{DC}	0	V	
Source power	P_S	0	dBm	source impedance 50 Ω



SAW Components

B4050

Low Loss Filter

1575.42 MHz

Data Sheet



Characteristics

Operating temperature range: $T = -40\text{ °C to }+85\text{ °C}$
Terminating source impedance: $Z_S = 50\ \Omega$
Terminating load impedance: $Z_L = 50\ \Omega$ (balanced)

		min.	typ.	max.	
Center frequency	f_C	—	1575,42	—	MHz
Maximum insertion attenuation	α_{\max}				
1574,22 ... 1576,62 MHz		—	3,3	3,8	dB
Amplitude ripple (p-p)	$\Delta\alpha$				
1574,22 ... 1576,62 MHz		—	0,3	1,0	dB
Attenuation	α				
0,00 ... 1250,00 MHz		50,0	60,0	—	dB
1425,00 ... 1525,00 MHz		37,0	50,0	—	dB
1525,00 ... 1535,42 MHz		30,0	44,0	—	dB
1615,42 ... 1625,00 MHz		20,0	44,0	—	dB
1625,00 ... 1675,00 MHz		37,0	46,0	—	dB
1675,00 ... 1850,00 MHz		40,0	60,0	—	dB
1850,00 ... 1910,00 MHz		50,0	60,0	—	dB
1910,00 ... 2500,00 MHz		40,0	55,0	—	dB
2500,00 ... 4000,00 MHz		20,0	52,0	—	dB



SAW Components

B4050

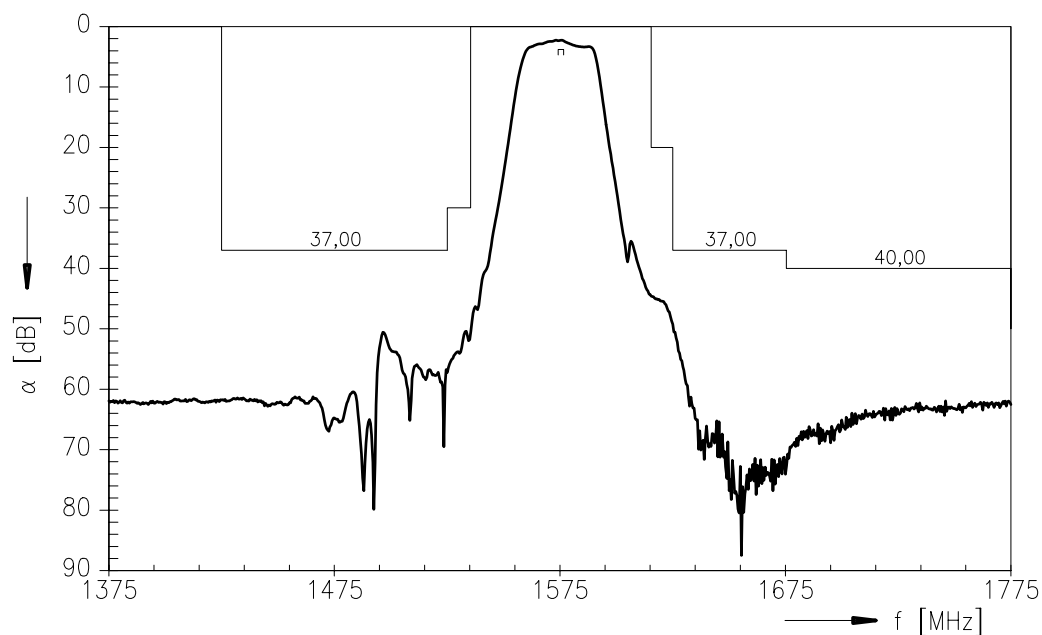
Low Loss Filter

1575.42 MHz

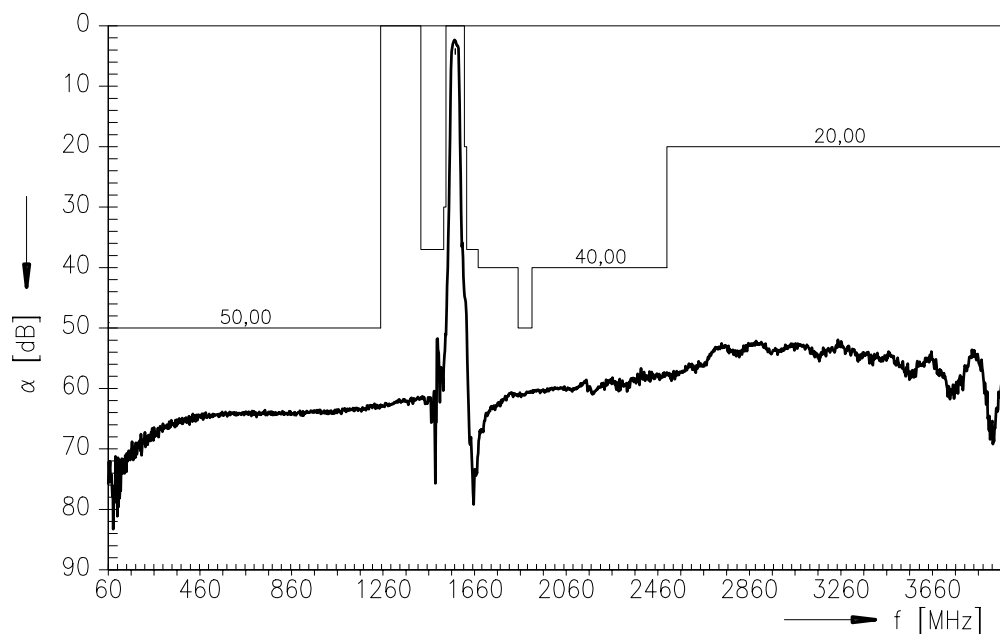
Data Sheet



Transfer function



Transfer function (wide band)





SAW Components	B4050
Low Loss Filter	1575.42 MHz
Data Sheet	SMD

Published by EPCOS AG
Surface Acoustic Wave Components Division, OFW E NK
P.O. Box 80 17 09, D-81617 München

© EPCOS AG 1999. All Rights Reserved.

As far as patents or other rights of third parties are concerned, liability is only assumed for components per se, not for applications, processes and circuits implemented within components or assemblies.

The information describes the type of component and shall not be considered as assured characteristics.

Terms of delivery and rights to change design reserved.

For questions on technology, prices and delivery please contact the sales offices of EPCOS AG or the international representatives.

Due to technical requirements components may contain dangerous substances. For information on the type in question please also contact one of our sales offices.