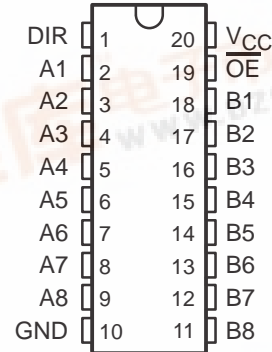


# SN74BCT2245 OCTAL TRANSCEIVER AND LINE/MOS DRIVER WITH 3-STATE OUTPUTS

SCBS102B – FEBRUARY 1992 – REVISED APRIL 1994

- **State-of-the-Art BiCMOS Design Significantly Reduces  $I_{CCZ}$**
- **ESD Protection Exceeds 2000 V Per MIL-STD-883C, Method 3015; Exceeds 200 V Using Machine Model ( $C = 200$  pF,  $R = 0$ )**
- **B Port Has Equivalent 33- $\Omega$  Series Resistors, So No External Resistors Are Required**
- **Package Options Include Plastic Small-Outline (DW) and Shrink Small-Outline (DB) Packages and Standard Plastic 300-mil DIPs (N)**

DB, DW, OR N PACKAGE  
(TOP VIEW)

## description

The SN74BCT2245 octal transceiver and line/MOS driver is designed for asynchronous communication between data buses.

The device allows data transmission from the A bus to the B bus or from the B bus to the A bus depending upon the logic level at the direction-control (DIR) input. The output-enable ( $\overline{OE}$ ) input can disable the devices so that both buses are effectively isolated.

The B-port outputs, which are designed to source or sink up to 12 mA, include 33- $\Omega$  series resistors to reduce overshoot and undershoot.

The SN74BCT2245 is characterized for operation from 0°C to 70°C.

FUNCTION TABLE

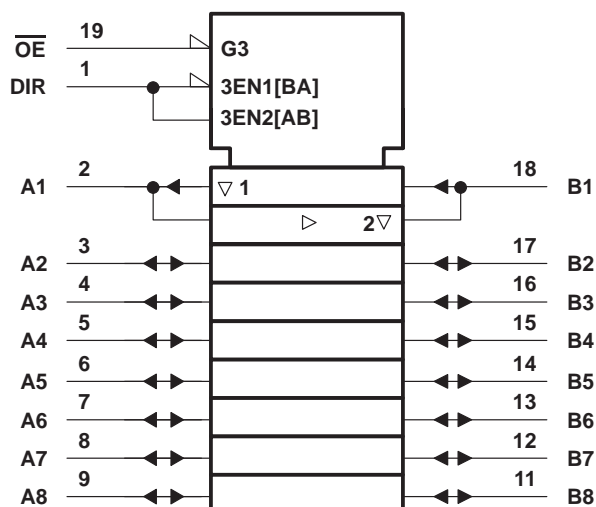
INPUTS		OPERATION
$\overline{OE}$	DIR	
L	L	B data to A bus
L	H	A data to B bus
H	X	Isolation

# SN74BCT2245

## OCTAL TRANSCEIVER AND LINE/MOS DRIVER WITH 3-STATE OUTPUTS

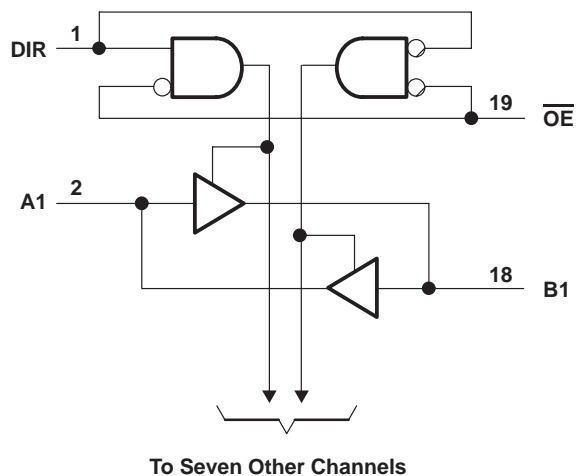
SCBS102B – FEBRUARY 1992 – REVISED APRIL 1994

### logic symbol†

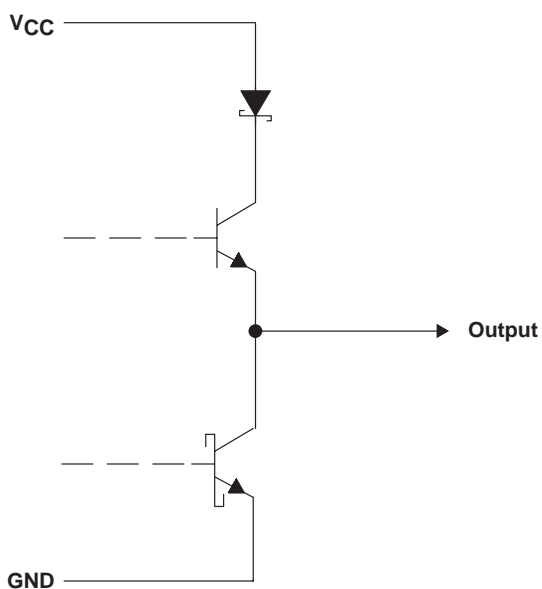


† This symbol is in accordance with ANSI/IEEE Std 91-1984 and IEC Publication 617-12.

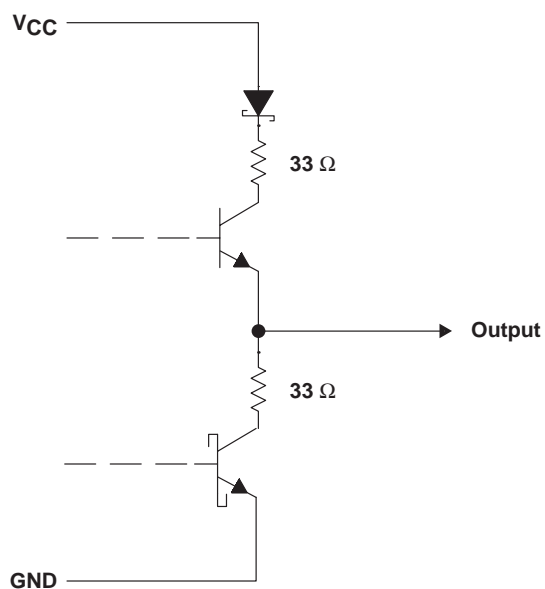
### logic diagram (positive logic)



### schematic of A-port outputs



### schematic of B-port outputs



All resistor values shown are nominal.

**SN74BCT2245**  
**OCTAL TRANSCEIVER AND LINE/MOS DRIVER**  
**WITH 3-STATE OUTPUTS**

SCBS102B – FEBRUARY 1992 – REVISED APRIL 1994

**absolute maximum ratings over operating free-air temperature range (unless otherwise noted)<sup>†</sup>**

Supply voltage range, $V_{CC}$	–0.5 V to 7 V
Input voltage range, $V_I$ (except I/O ports) (see Note 1)	–0.5 V to 7 V
Voltage range applied to any output in the disabled or power-off state, $V_O$	–0.5 V to 5.5 V
Voltage range applied to any output in the high state, $V_O$	–0.5 V to $V_{CC}$
Input clamp current, $I_{IK}$ ( $V_I < 0$ )	–30 mA
Current into any output in the low state, $I_O$	60 mA
Operating free-air temperature range	0°C to 70°C
Storage temperature range	–65°C to 150°C

<sup>†</sup> Stresses beyond those listed under “absolute maximum ratings” may cause permanent damage to the device. These are stress ratings only, and functional operation of the device at these or any other conditions beyond those indicated under “recommended operating conditions” is not implied. Exposure to absolute-maximum-rated conditions for extended periods may affect device reliability.

NOTE 1: The input negative-voltage rating may be exceeded if the input clamp-current rating is observed.

**recommended operating conditions (see Note 2)**

		MIN	NOM	MAX	UNIT
$V_{CC}$	Supply voltage	4.5	5	5.5	V
$V_{IH}$	High-level input voltage	2			V
$V_{IL}$	Low-level input voltage			0.8	V
$I_{IK}$	Input clamp current			–18	mA
$I_{OH}$	High-level output current			–3	mA
				–12	
$I_{OL}$	Low-level output current			24	mA
				12	
$T_A$	Operating free-air temperature	0		70	°C

NOTE 2: Unused or floating pins (input or I/O) must be held high or low.

# SN74BCT2245

## OCTAL TRANSCEIVER AND LINE/MOS DRIVER

### WITH 3-STATE OUTPUTS

SCBS102B – FEBRUARY 1992 – REVISED APRIL 1994

electrical characteristics over recommended operating free-air temperature range (unless otherwise noted)

PARAMETER		TEST CONDITIONS		MIN	TYP†	MAX	UNIT
V <sub>IK</sub>		V <sub>CC</sub> = 4.5 V,	I <sub>I</sub> = −18 mA			−1.2	V
V <sub>OH</sub>	A port	V <sub>CC</sub> = 4.5 V	I <sub>OH</sub> = −1 mA	2.5	3.4		V
			I <sub>OH</sub> = −3 mA	2.4	3.3		
	B port	V <sub>CC</sub> = 4.5 V	I <sub>OH</sub> = −1 mA	2.4	3.3		
			I <sub>OH</sub> = −12 mA	2	3.2		
V <sub>OL</sub>	A port	V <sub>CC</sub> = 4.5 V,	I <sub>OL</sub> = 24 mA	0.35	0.5		V
	B port	V <sub>CC</sub> = 4.5 V	I <sub>OL</sub> = 1 mA		0.5		
			I <sub>OL</sub> = 12 mA		0.8		
I <sub>I</sub>		V <sub>CC</sub> = 5.5 V,	V <sub>I</sub> = 5.5 V			0.1	mA
I <sub>IH</sub> ‡	A or B port	V <sub>CC</sub> = 5.5 V,	V <sub>I</sub> = 2.7 V			70	μA
	Control input					20	
I <sub>IL</sub> ‡		V <sub>CC</sub> = 5.5 V,	V <sub>I</sub> = 0.5 V			−0.65	mA
I <sub>OS</sub> §	A port	V <sub>CC</sub> = 5.5 V,	V <sub>O</sub> = 0	−60		−150	mA
	B port			−100		−225	
I <sub>CCL</sub>	A to B	V <sub>CC</sub> = 5.5 V,	Outputs open	63	100		mA
	B to A			40	64		
I <sub>CCH</sub>	A to B	V <sub>CC</sub> = 5.5 V,	Outputs open	37	59		mA
	B to A			29	46		
I <sub>CCZ</sub>	A to B	V <sub>CC</sub> = 5.5 V,	Outputs open	9	15		mA
	B to A			8	14		
C <sub>i</sub>	Control input	V <sub>CC</sub> = 5 V,	V <sub>I</sub> = 2.5 V or 0.5 V	7			pF
C <sub>io</sub>	A to B	V <sub>CC</sub> = 5 V,	V <sub>O</sub> = 2.5 V or 0.5 V	9			pF
	B to A			12			

† All typical values are at  $V_{CC} = 5\text{ V}$ ,  $T_A = 25^\circ\text{C}$ .

‡ For I/O ports, the parameters  $I_{IH}$  and  $I_{IL}$  include the off-state output current.

§ Not more than one output should be tested at a time, and the duration of the test should not exceed one second.

**SN74BCT2245**  
**OCTAL TRANSCEIVER AND LINE/MOS DRIVER**  
**WITH 3-STATE OUTPUTS**

SCBS102B – FEBRUARY 1992 – REVISED APRIL 1994

switching characteristics over recommended ranges of supply voltage and operating free-air temperature,  $C_L = 50$  pF (unless otherwise noted) (see Note 3)

PARAMETER	FROM (INPUT)	TO (OUTPUT)	$V_{CC} = 5$ V, $T_A = 25^\circ\text{C}$			MIN	MAX	UNIT
			MIN	TYP	MAX			
$t_{PLH}$	A	B	1	3.3	4.9	1	5.8	ns
	B	A	1.7	4.2	6.1	1.7	7	
$t_{PHL}$	A	B	2.5	5.1	6.9	2.5	7.8	ns
	B	A	2.2	4.7	7.1	2.2	7.7	
$t_{PZH}$	$\overline{OE}$	B	3.2	6.2	8.6	3.2	9.9	ns
		A	3.8	7.2	9.5	3.8	11.1	
$t_{PZL}$	$\overline{OE}$	B	5.6	8.3	10.9	5.6	12.2	ns
		A	4.2	7.6	10.1	4.2	11.4	
$t_{PHZ}$	$\overline{OE}$	B	2.6	5.2	7.1	2.6	8.2	ns
		A	3.1	5.7	8	3.1	9.4	
$t_{PLZ}$	$\overline{OE}$	B	3.5	6	7.9	3.5	9.2	ns
		A	2.3	4.7	6.5	2.3	7.6	

NOTE 3: Load circuits and voltage waveforms are shown in Section 1.



## **IMPORTANT NOTICE**

Texas Instruments and its subsidiaries (TI) reserve the right to make changes to their products or to discontinue any product or service without notice, and advise customers to obtain the latest version of relevant information to verify, before placing orders, that information being relied on is current and complete. All products are sold subject to the terms and conditions of sale supplied at the time of order acknowledgement, including those pertaining to warranty, patent infringement, and limitation of liability.

TI warrants performance of its semiconductor products to the specifications applicable at the time of sale in accordance with TI's standard warranty. Testing and other quality control techniques are utilized to the extent TI deems necessary to support this warranty. Specific testing of all parameters of each device is not necessarily performed, except those mandated by government requirements.

CERTAIN APPLICATIONS USING SEMICONDUCTOR PRODUCTS MAY INVOLVE POTENTIAL RISKS OF DEATH, PERSONAL INJURY, OR SEVERE PROPERTY OR ENVIRONMENTAL DAMAGE ("CRITICAL APPLICATIONS"). TI SEMICONDUCTOR PRODUCTS ARE NOT DESIGNED, AUTHORIZED, OR WARRANTED TO BE SUITABLE FOR USE IN LIFE-SUPPORT DEVICES OR SYSTEMS OR OTHER CRITICAL APPLICATIONS. INCLUSION OF TI PRODUCTS IN SUCH APPLICATIONS IS UNDERSTOOD TO BE FULLY AT THE CUSTOMER'S RISK.

In order to minimize risks associated with the customer's applications, adequate design and operating safeguards must be provided by the customer to minimize inherent or procedural hazards.

TI assumes no liability for applications assistance or customer product design. TI does not warrant or represent that any license, either express or implied, is granted under any patent right, copyright, mask work right, or other intellectual property right of TI covering or relating to any combination, machine, or process in which such semiconductor products or services might be or are used. TI's publication of information regarding any third party's products or services does not constitute TI's approval, warranty or endorsement thereof.