



BUT70

HIGH POWER NPN SILICON TRANSISTOR

- SGS-THOMSON PREFERRED SALESTYPE
- NPN TRANSISTOR
- HIGH CURRENT CAPABILITY
- FAST SWITCHING SPEED
- VERY LOW SATURATION VOLTAGE AND HIGH GAIN

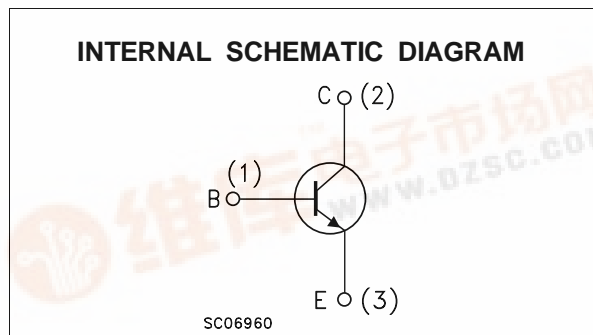
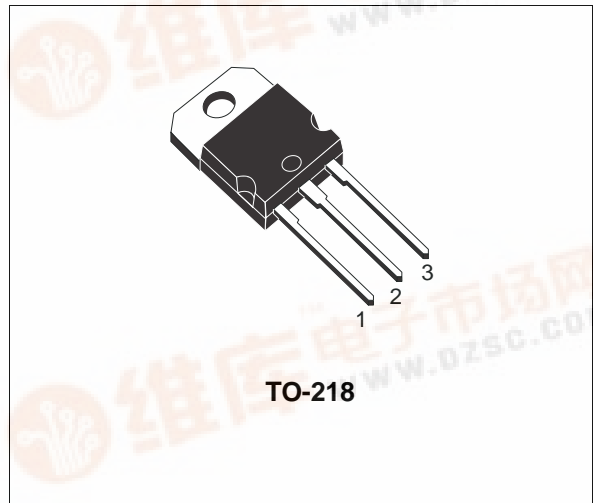
APPLICATION

- SWITCHING REGULATORS
- MOTOR CONTROL
- HIGH FREQUENCY AND EFFICENCY CONVERTERS

DESCRIPTION

The BUT70 is a Multi epitaxial planar NPN transistor in TO-218 plastic package.

It's intended for use in high frequency and efficiency converters such us motor controllers and industrial equipment.



ABSOLUTE MAXIMUM RATINGS

Symbol	Parameter	Value	Unit
V_{CEV}	Collector-emitter Voltage ($V_{BE} = -1.5V$)	200	V
V_{CEO}	Collector-emitter Voltage ($I_B = 0$)	125	V
V_{EBO}	Emitter-Base Voltage ($I_C = 0$)	7	V
$I_{E(RMS)}$	Emitter Current	40	A
I_{EM}	Emitter Peak Current	120	A
I_B	Base Current	8	A
I_{BM}	Base Peak Current	24	A
P_{tot}	Total Power Dissipation at $T_{case} < 25\text{ }^\circ\text{C}$	200	W
T_{stg}	Storage Temperature	-65 to 150	$^\circ\text{C}$
T_j	Max Operating Junction Temperature	150	$^\circ\text{C}$

BUT70

THERMAL DATA

$R_{thj-case}$	Thermal Resistance Junction-case	Max	0.63	°C/W
----------------	----------------------------------	-----	------	------

ELECTRICAL CHARACTERISTICS ($T_{case} = 25\text{ °C}$ unless otherwise specified)

Symbol	Parameter	Test Conditions	Min.	Typ.	Max.	Unit
I_{CER}	Collector Cut-off Current ($R_{BE} = 5\Omega$)	$V_{CE} = V_{CEV}$			1	mA
		$V_{CE} = V_{CEV} \quad T_c = 100\text{ °C}$			5	mA
I_{CEV}	Collector Cut-off Current	$V_{CE} = V_{CEV} \quad V_{BE} = -1.5V$			1	mA
		$V_{CE} = V_{CEV} \quad V_{BE} = -1.5V \quad T_c = 100\text{ °C}$			4	mA
I_{EBO}	Emitter Cut-off Current ($I_C = 0$)	$V_{EB} = -5V$			1	mA
$V_{CEO(sus)*}$	Collector-Emitter Sustaining Voltage	$I_C = 0.2A$ $L = 25\text{ mH}$	125			V
V_{EBO}	Emitter-base Voltage ($I_C = 0$)	$I_E = 50\text{ mA}$	7			V
$V_{CE(sat)*}$	Collector-Emitter Saturation Voltage	$I_C = 70\text{ A} \quad I_B = 7\text{ A}$			0.9	V
		$I_C = 70\text{ A} \quad I_B = 7\text{ A} \quad T_j = 100\text{ °C}$			1.5	V
		$I_C = 35\text{ A} \quad I_B = 1.75\text{ A}$			0.9	V
		$I_C = 35\text{ A} \quad I_B = 1.75\text{ A} \quad T_j = 100\text{ °C}$			1.2	V
$V_{BE(sat)*}$	Base-Emitter Saturation Voltage	$I_C = 70\text{ A} \quad I_B = 7\text{ A}$			1.8	V
		$I_C = 70\text{ A} \quad I_B = 7\text{ A} \quad T_j = 100\text{ °C}$			1.9	V
		$I_C = 35\text{ A} \quad I_B = 1.75\text{ A}$			1.4	V
		$I_C = 35\text{ A} \quad I_B = 1.75\text{ A} \quad T_j = 100\text{ °C}$			1.4	V
di_c/d_t*	Rated of Rise of on-state Collector Current	$V_{CC} = 100\text{ V} \quad R_C = 0 \quad I_{B1} = 3.5\text{ A}$ $t_p = 3\text{ }\mu\text{S} \quad T_j = 100\text{ °C}$	140			A/ μs

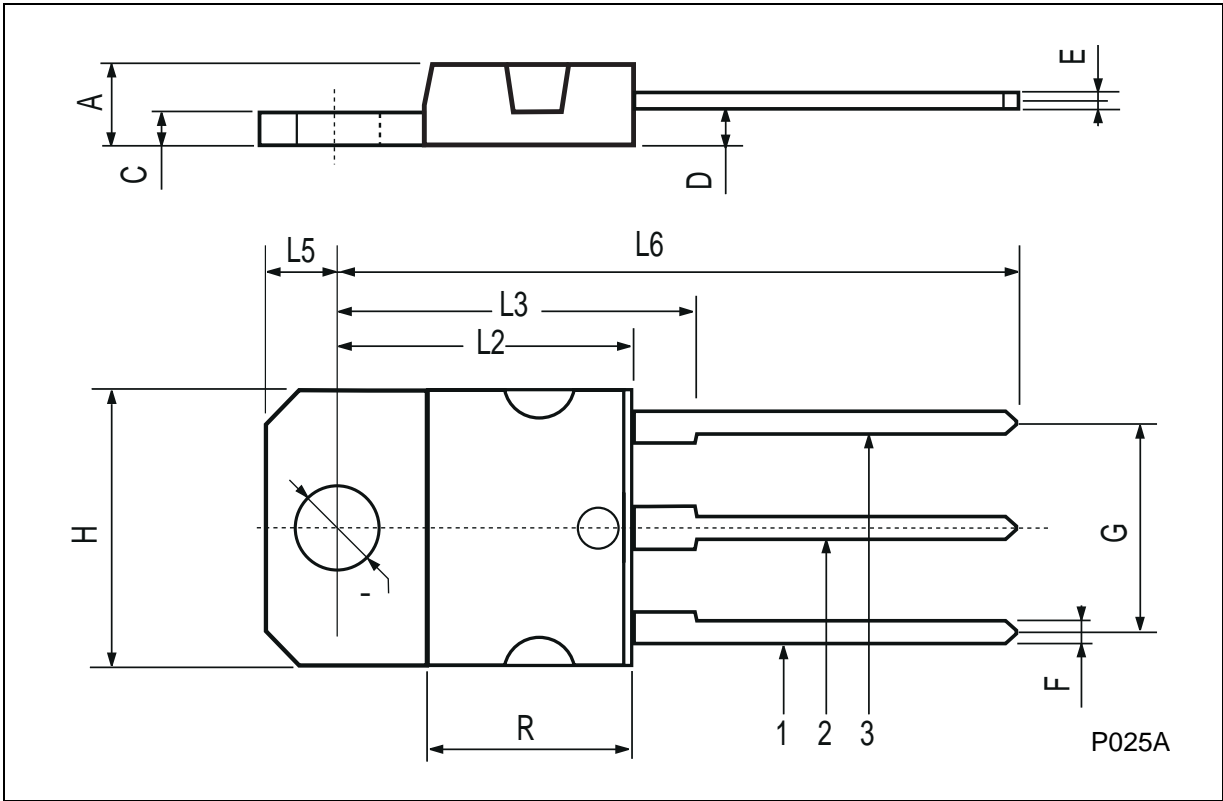
* Pulsed: Pulse duration = 300 μs , duty cycle < 2 %

INDUCTIVE LOAD

Symbol	Parameter	Test Conditions	Min.	Typ.	Max.	Unit
t_r	Rise Time	$V_{CC} = 90\text{ V} \quad I_C = 35\text{ A}$			1.8	μs
t_s	Storage Time	$V_{BB} = -5\text{ V} \quad I_{B1} = 1.75\text{ A}$			0.2	μs
t_f	Fall Time	$R_{B2} = 1.4\text{ }\Omega$			0.35	μs
		$L_C = 0.13\text{ mH} \quad T_J = 100\text{ °C}$				
		$V_{CLAMP} = 125V$				

TO-218 (SOT-93) MECHANICAL DATA

DIM.	mm			inch		
	MIN.	TYP.	MAX.	MIN.	TYP.	MAX.
A	4.7		4.9	0.185		0.193
C	1.17		1.37	0.046		0.054
D		2.5			0.098	
E	0.5		0.78	0.019		0.030
F	1.1		1.3	0.043		0.051
G	10.8		11.1	0.425		0.437
H	14.7		15.2	0.578		0.598
L2	-		16.2	-		0.637
L3		18			0.708	
L5	3.95		4.15	0.155		0.163
L6		31			1.220	
R	-		12.2	-		0.480
Ø	4		4.1	0.157		0.161



Information furnished is believed to be accurate and reliable. However, SGS-THOMSON Microelectronics assumes no responsibility for the consequences of use of such information nor for any infringement of patents or other rights of third parties which may result from its use. No license is granted by implication or otherwise under any patent or patent rights of SGS-THOMSON Microelectronics. Specifications mentioned in this publication are subject to change without notice. This publication supersedes and replaces all information previously supplied. SGS-THOMSON Microelectronics products are not authorized for use as critical components in life support devices or systems without express written approval of SGS-THOMSON Microelectronics.

© 1997 SGS-THOMSON Microelectronics - Printed in Italy - All Rights Reserved

SGS-THOMSON Microelectronics GROUP OF COMPANIES
Australia - Brazil - Canada - China - France - Germany - Italy - Japan - Korea - Malaysia - Malta - Morocco - The Netherlands -
Singapore - Spain - Sweden - Switzerland - Taiwan - Thailand - United Kingdom - U.S.A

...