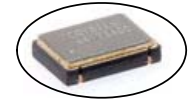


C33xx Model 5X7 mm SMD, 3.3V, HCMOS



Clock Oscillator

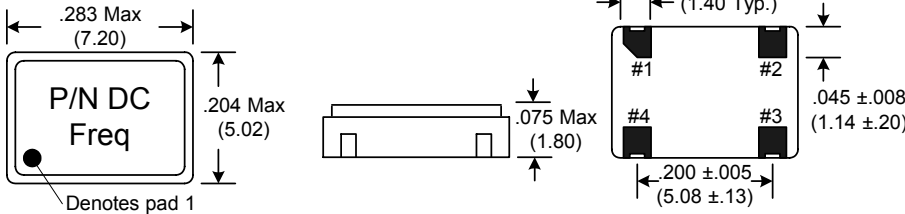
Frequency Range: 1.544MHz to 156.250MHz
Frequency Stability: ±20ppm to ±100ppm
Temperature Range:
 Operating: 0°C to 70°C
 (Option M) -20°C to 70°C
 (Option E) -40°C to 85°C
Storage: -55°C to 120°C
Input Voltage: 3.3V ± 0.3V
Input Current: 40mA Max
Output: HCMOS
 Symmetry: 45/55% Max @ 50% Vdd
 Rise/Fall Time: 8ns Max @ 20% to 80% Vdd
 >125MHz 2.5ns Max @ 10% to 90% Vdd
 Logic: "0" = 10% Vdd Max
 "1" = 90% Vdd Min
 Load: 30pF Max, >125MHz 15pF Max
Jitter RMS: 12KHz~20MHz 0.5ps Typ, 1ps Max
Jitter pk-pk: 30ps Max (20,000 periods)
Aging: <3ppm 1st/yr, <1ppm every year thereafter



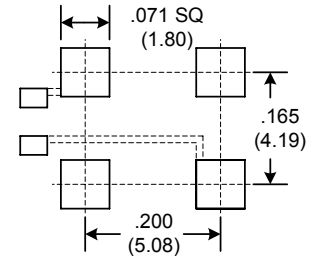
Designed to meet today's requirements for low jitter 3.3V applications. The C33xx Series utilizes fundamental and 3rd overtone crystal technology. No multiplier is used thereby reducing output jitter. Available on 16mm tape and reel in quantities of 1K.

Dimensions inches (mm)

All dimensions are Max unless otherwise specified.

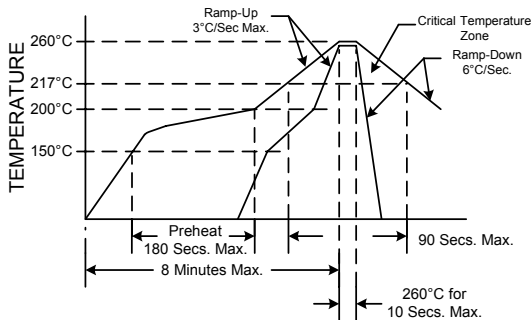


SUGGESTED PAD LAYOUT



0.01uF Bypass Capacitor Recommended

RECOMMENDED REFLOW SOLDERING PROFILE

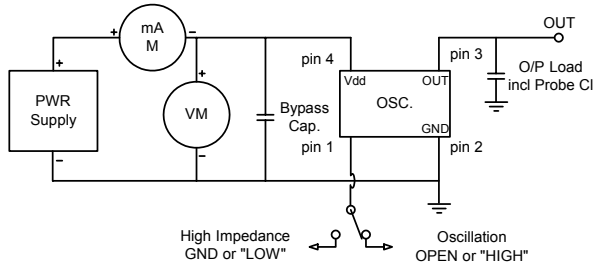


NOTE: Reflow Profile with 240°C peak also acceptable.

Crystek Part Number Guide

Example: C3392-44.736MHZ
 Example: CM3392-44.736MHZ
 Example: CE3392-44.736MHZ

	Temperature			Frequency Stability
	0/ 70°C	-20/ 70°C	-40/ 85°C	
C3390	CM3390	CE3390		+/- 100ppm
C3392	CM3392	CE3392		+/- 50ppm
C3391	CM3391	CE3391		+/- 25ppm
C3398	CM3398	CE3398		+/- 20ppm



Tri-State Function	
Function pin 1	Output pin
Open	Active
"1" level 2.4V Min	Active
"0" level 0.4V Max	High Z

Specifications subject to change without notice.

TD-02073 Rev.F



Crystek Crystals Corporation

12730 Commonwealth Drive • Fort Myers, FL 33913
 239.561.3311 • 800.237.3061 • FAX: 239.561.1025 • www.crystek.com