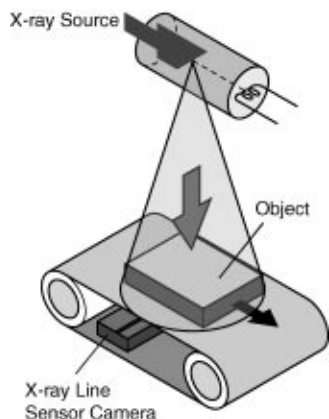


X-Ray Line Sensor Camera C7390 Series



The C7390 Series X-ray line sensor camera offers high resolution and high sensitivity for capturing finely detailed X-ray images of products or parts moving along on a belt conveyor. X-ray images are obtained in synchronization with external timing signals from the transfer mechanism such as a belt conveyor or by internal timing signals, and are then output as RS-422 digital signals.



FEATURES

- High resolution
- Equipment with wider detection areas
- Available with 256 mm or 512 mm detector length
- Easily connectable to frame grabber board

The signal output method of this X-ray line sensor camera is designed to handle commercially available, digital frame grabber boards.

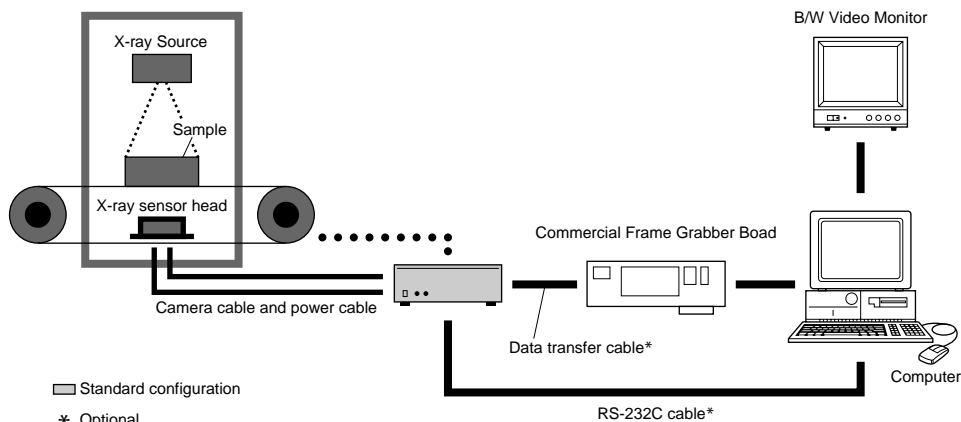
APPLICATIONS

- Detection of foreign matter in the food processing industry
- Presense of dangerous objects in incinerators, like gas bottles, fire extinguishers
- X-ray tomography for inspection of fuel tanks, moving parts in engines.

SPECIFICATIONS

Scintillator Material	Gd plastic scintillator
Effective X-ray tube voltage range	40 to 160 kV
Sensor element pitch	0.4 mm
Detection width	512 mm or 256 mm
Resolution	512 mm: 1280 pixels
	256 mm: 640 pixels
Line speed	4 to 40 m/min
A/D conversion	12 bits
Digital Interface	RS-422
External Control	RS-232C
Correction functions	Offset and Brightness
Operating temperature	0 to 40°C
Storage temperature	-10 to +50°C
Operating and storage humidity	30 to 80% (no condensation)
Line Voltage	AC100/117/220/240±10% 50/60Hz
Power consumption	Approx. 100VA

SYSTEM CONFIGURATION EXAMPLE



- NOTE**
- The C7390 X-ray line sensor camera consists of a sensor head, sensor control unit and cables. Image display equipment should be ordered separately.

STANDARD CONFIGURATION

- | | | | |
|---------------------------------|---|------------------------------------------|---|
| ● X-ray sensor head | 1 | ● Camera power cable (5 meters) | 1 |
| ● Sensor control unit..... | 1 | ● Power cable (2 meters) | 1 |
| ● Camera cable (5 meters) | 1 | ● Accessories (Instruction manual) | 1 |
| | | (Fuse)..... | 1 |

OPTIONAL

● Processor board

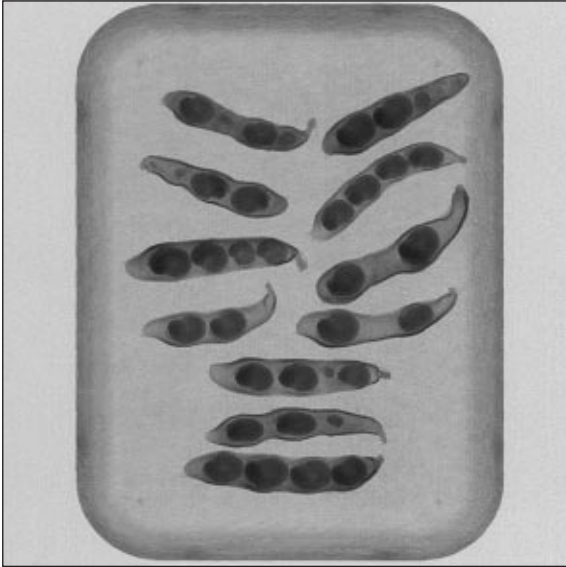
This is designed to be installed in a computer and has functions to display an image while scrolling the acquired data, freeze the image at the desired timing and control the sensor head, just as with the above display.

● Data transfer cables

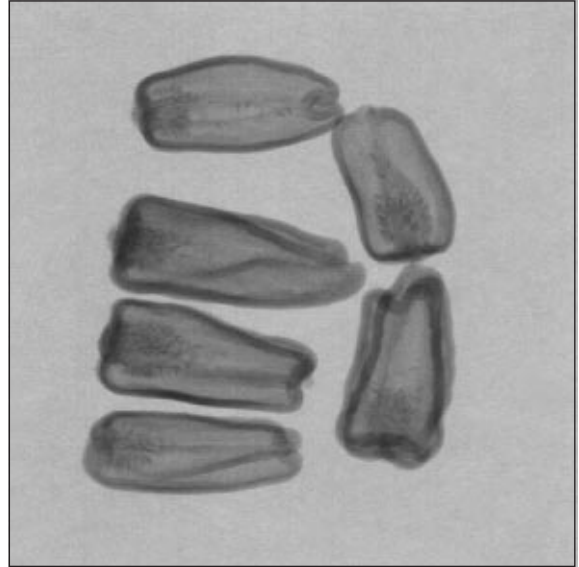
Custom data transfer cables are provided to match the particular application. For example, cables are supplied in lengths of 5, 10 and 20 meters to handle relatively long distances to the video monitor. Please consult with us if even longer cables are needed.

APPLICATION EXAMPLES

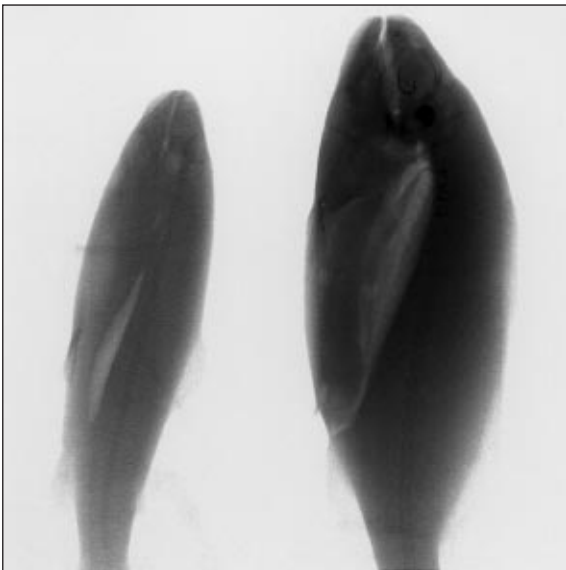
- Field pea



- Green pepper



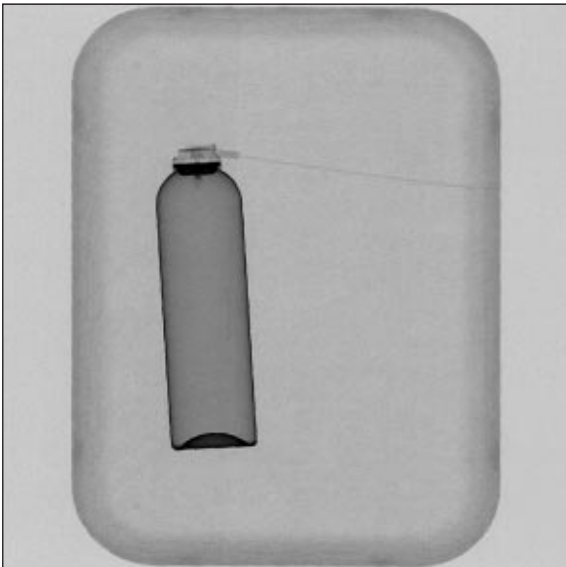
- Fish



- Chicken



- Incinerators, like gas bottles



- Shoes



Cat. No. SICS1065E03
DEC/98 CR
Created in Japan (PDF)