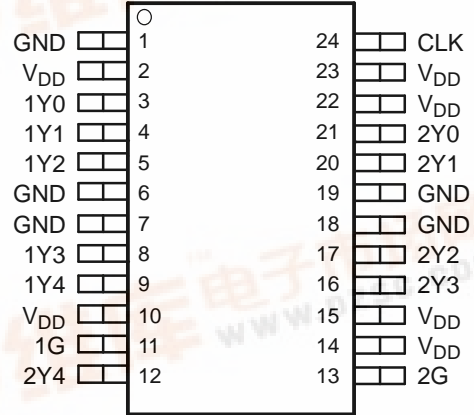


## 2.5-V TO 3.3-V HIGH-PERFORMANCE CLOCK BUFFER

- High-Performance 1:10 Clock Driver for General-Purpose Applications
- Pin-to-Pin Skew < 100 ps at V<sub>DD</sub> 3.3 V
- V<sub>DD</sub> Range = 2.3 V to 3.6 V
- Input Clock Up To 200 MHz (See Figure 7)
- Operating Temperature Range –40°C to 85°C
- Output Enable Glitch Suppression
- Distributes One Clock Input to Two Banks of Five Outputs
- Packaged in 24-Pin TSSOP
- Pin-to-Pin Compatible to the CDCVF2310, Except the R = 22-Ω Series Damping Resistors at Yn

PW PACKAGE  
(TOP VIEW)

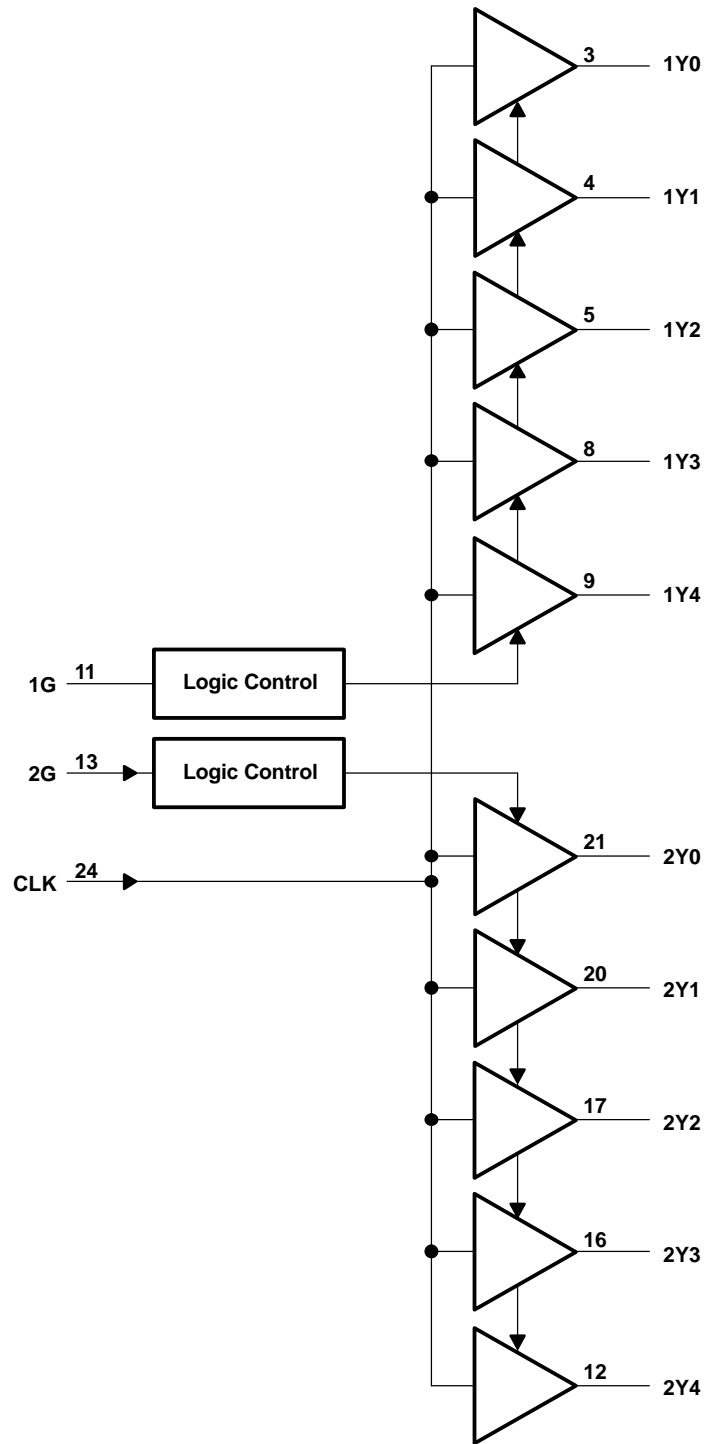


### DESCRIPTION

The CDCVF310 is a high-performance, low-skew clock buffer that operates up to 200 MHz. Two banks of five outputs each provide low-skew copies of CLK. After power up, the default state of the outputs is low regardless of the state of the control pins. For normal operation, the outputs of bank 1Y[0:4] or 2Y[0:4] can be placed in a low state when the control pins (1G or 2G, respectively) are held low and a negative clock edge is detected on the CLK input. The outputs of bank 1Y[0:4] or 2Y[0:4] can be switched into the buffer mode when the control pins (1G and 2G) are held high and a negative clock edge is detected on the CLK input. The device operates in a 2.5-V and 3.3-V environment. The built-in output enable glitch suppression ensures a synchronized output enable sequence to distribute full period clock signals.

The CDCVF310 is characterized for operation from –40°C to 85°C.

FUNCTIONAL BLOCK DIAGRAM



**FUNCTION TABLE**

INPUT			OUTPUT	
1G	2G	CLK	1Y[0:4]	2Y[0:4]
L	L	↓	L	L
H	L	↓	CLK <sup>(1)</sup>	L
L	H	↓	L	CLK <sup>(1)</sup>
H	H	↓	CLK <sup>(1)</sup>	CLK <sup>(1)</sup>

- (1) After detecting one negative edge on the CLK input, the output follows the input CLK if the control pin is held high.

**Terminal Functions**

TERMINAL		I/O	DESCRIPTION
NAME	NO.		
1G	11	I	Output enable control for 1Y[0:4] outputs. This output enable is active-high, meaning the 1Y[0:4] clock outputs follow the input clock (CLK) if this pin is logic high.
2G	13	I	Output enable control for 2Y[0:4] outputs. This output enable is active-high, meaning the 2Y[0:4] clock outputs follow the input clock (CLK) if this pin is logic high.
1Y[0:4]	3, 4, 5, 8, 9	O	Buffered output clocks
2Y[0:4]	21, 20, 17, 16, 12	O	Buffered output clocks
CLK	24	I	Input reference frequency
GND	1, 6, 7, 18, 19		Ground
V <sub>DD</sub>	2, 10, 14, 15, 22, 23		DC power supply, 2.3 V – 3.6 V

DETAILED DESCRIPTION

Output Enable Glitch Suppression Circuit

The purpose of the glitch suppression circuitry is to ensure the output enable sequence is synchronized with the clock input such that the output buffer is enabled or disabled on the next full period of the input clock (negative edge triggered by the input clock) (see Figure 1).

The G input must fulfill the timing requirements ( $t_{su}$ ,  $t_h$ ) according to the *Switching Characteristics* table for predictable operation.

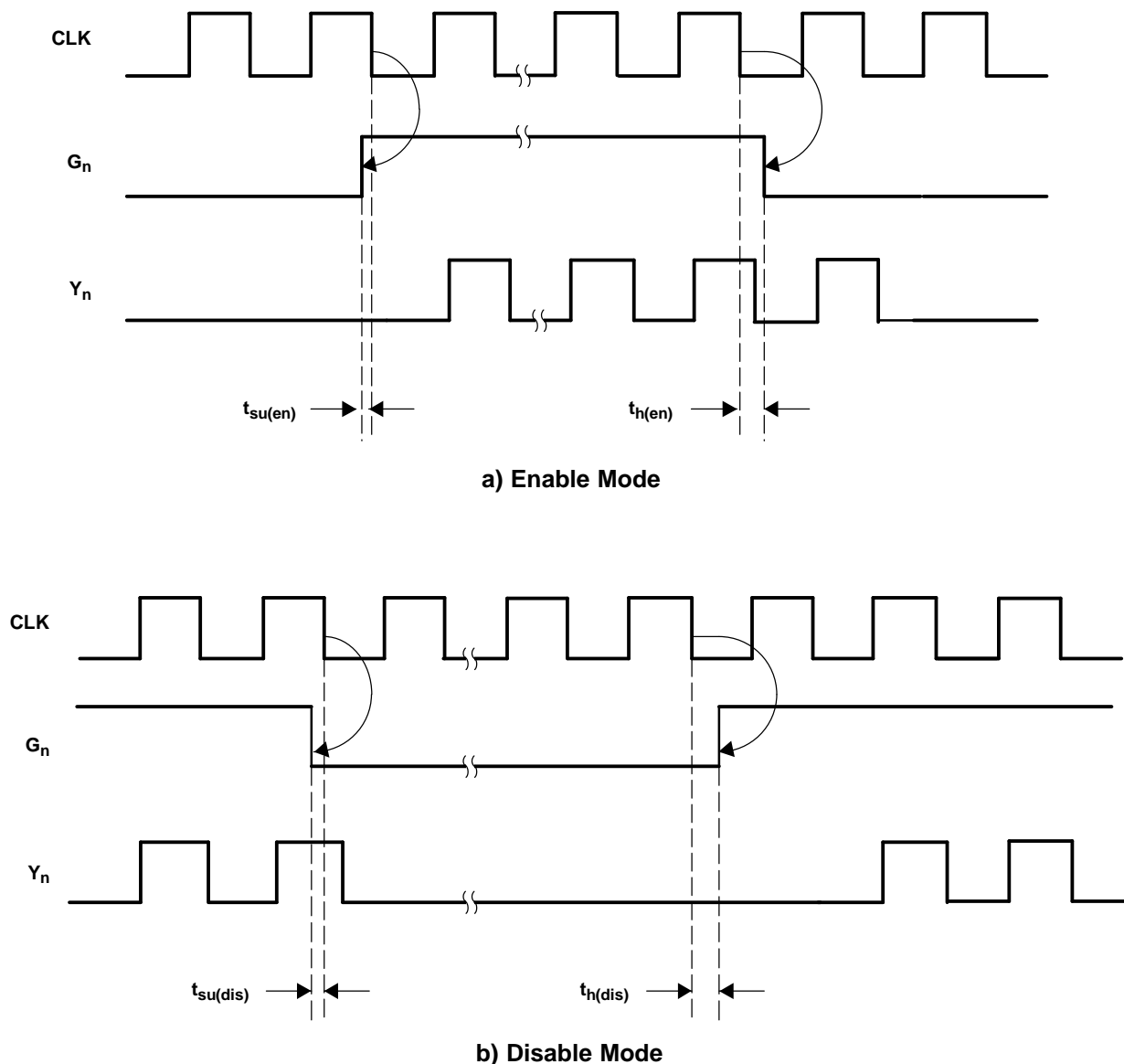


Figure 1. Enable and Disable Mode Relative to CLK↓

## ABSOLUTE MAXIMUM RATINGS

over operating free-air temperature range (unless otherwise noted) <sup>(1)</sup>

Supply voltage range, $V_{DD}$	–0.5 V to 4.6 V
Input voltage range, $V_I$ <sup>(2)(3)</sup>	–0.5 V to $V_{DD} + 0.5$ V
Output voltage range, $V_O$ <sup>(2)(3)</sup>	–0.5 V to $V_{DD} + 0.5$ V
Input clamp current, $I_{IK}$ ( $V_I < 0$ or $V_I > V_{DD}$ )	±50 mA
Output clamp current, $I_{OK}$ ( $V_O < 0$ or $V_O > V_{DD}$ )	±50 mA
Continuous total output current, $I_O$ ( $V_O = 0$ to $V_{DD}$ )	±50 mA
Package thermal impedance, $\theta_{JA}$ <sup>(4)</sup> : PW package	88°C/W, high K
	120°C/W, low K
Storage temperature range $T_{stg}$	–65°C to 150°C

- (1) Stresses beyond those listed under “absolute maximum ratings” may cause permanent damage to the device. These are stress ratings only, and functional operation of the device at these or any other conditions beyond those indicated under “recommended operating conditions” is not implied. Exposure to absolute-maximum-rated conditions for extended periods may affect device reliability.
- (2) The input and output negative voltage ratings may be exceeded if the input and output clamp-current ratings are observed.
- (3) This value is limited to 4.6 V maximum.
- (4) The package thermal impedance is calculated in accordance with JESD 51.

## RECOMMENDED OPERATING CONDITIONS <sup>(1)</sup>

		MIN	NOM	MAX	UNIT
Supply voltage, $V_{DD}$		2.3	2.5		V
			3.3	3.6	
Low-level input voltage, $V_{IL}$	$V_{DD} = 3$ V to 3.6 V			0.8	V
	$V_{DD} = 2.3$ V to 2.7 V			0.7	
High-level input voltage, $V_{IH}$	$V_{DD} = 3$ V to 3.6 V	2			V
	$V_{DD} = 2.3$ V to 2.7 V	1.7			
Input voltage, $V_I$		0		$V_{DD}$	V
High-level output current, $I_{OH}$	$V_{DD} = 3$ V to 3.6 V			–12	mA
	$V_{DD} = 2.3$ V to 2.7 V			–6	
Low-level output current, $I_{OL}$	$V_{DD} = 3$ V to 3.6 V			12	mA
	$V_{DD} = 2.3$ V to 2.7 V			6	
Operating free-air temperature, $T_A$		–40		85	°C

- (1) Unused inputs must be held high or low to prevent them from floating.

## TIMING REQUIREMENTS

over operating free-air temperature range (unless otherwise noted)

PARAMETER	TEST CONDITIONS	MIN	TYP	MAX	UNIT
$f_{clk}$	Clock frequency	$V_{DD} = 2.3$ V to 3.6 V, See Figure 7	0	200	MHz

**ELECTRICAL CHARACTERISTICS**

over recommended operating free-air temperature range (unless otherwise noted)<sup>(1)</sup>

PARAMETER	TEST CONDITIONS	MIN	TYP	MAX	UNIT
V <sub>IK</sub> Input voltage	V <sub>DD</sub> = 3 V, I <sub>I</sub> = -18 mA			-1.2	V
I <sub>I</sub> Input current	V <sub>I</sub> = 0 V or V <sub>DD</sub>			±5	µA
I <sub>DD</sub> <sup>(2)</sup> Static device current	CLK = 0 V or V <sub>DD</sub> = 3.6 V, I <sub>O</sub> = 0 mA			80	µA
C <sub>I</sub> Input capacitance	V <sub>DD</sub> = 2.3 V to 3.6 V, V <sub>I</sub> = 0 V or V <sub>DD</sub>		2.5		pF
C <sub>O</sub> Output capacitance	V <sub>DD</sub> = 2.3 V to 3.6 V, V <sub>I</sub> = 0 V or V <sub>DD</sub>		2.6		pF
C <sub>PD</sub> Power dissipation <sup>(3)</sup>	V <sub>DD</sub> = 2.3 V to 3.6 V, V <sub>I</sub> = 0 V or V <sub>DD</sub>			32	pF

- (1) All typical values are with respect to nominal V<sub>DD</sub>.
- (2) For dynamic I<sub>DD</sub> over Frequency see Figure 6.
- (3) This is the formula for the power dissipation calculation.

$$P_{tot} = P_{stat} + P_{Dyn} + P_{Load}[W]$$

$$P_{stat} = V_{DD} \times I_{DD} [W]$$

$$P_{Dyn} = C_{PD} \times V_{DD} \times V_{DD} \times f [W]$$

$$P_{Load} = C_{Load} \times V_{DD} \times V_{DD} \times f \times n [W]$$

n = Number of switching output pins

**V<sub>DD</sub> = 3.3 V ±0.3 V**

PARAMETER	TEST CONDITIONS	MIN	TYP <sup>(1)</sup>	MAX	UNIT
V <sub>OH</sub> High-level output voltage	V <sub>DD</sub> = min to max, I <sub>OH</sub> = -100 µA	V <sub>DD</sub> - 0.2			V
	V <sub>DD</sub> = 3 V, I <sub>OH</sub> = -12 mA	2.1			
	I <sub>OH</sub> = -6 mA	2.4			
V <sub>OL</sub> Low-level output voltage	V <sub>DD</sub> = min to max, I <sub>OL</sub> = 100 µA			0.2	V
	V <sub>DD</sub> = 3 V, I <sub>OL</sub> = 12 mA			0.4	
	I <sub>OL</sub> = 6 mA			0.3	
I <sub>OH</sub> High-level output current	V <sub>DD</sub> = 3 V, V <sub>O</sub> = 1 V	-37			mA
	V <sub>DD</sub> = 3.3 V, V <sub>O</sub> = 1.65 V		-57		
	V <sub>DD</sub> = 3.6 V, V <sub>O</sub> = 3.135 V			-38	
I <sub>OL</sub> Low-level output current	V <sub>DD</sub> = 3 V, V <sub>O</sub> = 1.95 V	37			mA
	V <sub>DD</sub> = 3.3 V, V <sub>O</sub> = 1.65 V		57		
	V <sub>DD</sub> = 3.6 V, V <sub>O</sub> = 0.4 V			38	

- (1) All typical values are with respect to nominal V<sub>DD</sub>.

**V<sub>DD</sub> = 2.5 V ±0.2 V**

PARAMETER	TEST CONDITIONS	MIN	TYP <sup>(1)</sup>	MAX	UNIT
V <sub>OH</sub> High-level output voltage	V <sub>DD</sub> = min to max, I <sub>OH</sub> = -100 µA	V <sub>DD</sub> - 0.2			V
	V <sub>DD</sub> = 2.3 V, I <sub>OH</sub> = -6 mA	1.8			
V <sub>OL</sub> Low-level output voltage	V <sub>DD</sub> = min to max, I <sub>OL</sub> = 100 µA			0.2	V
	V <sub>DD</sub> = 2.3 V, I <sub>OL</sub> = 6 mA			0.4	
I <sub>OH</sub> High-level output current	V <sub>DD</sub> = 2.3 V, V <sub>O</sub> = 1 V	-20			mA
	V <sub>DD</sub> = 2.5 V, V <sub>O</sub> = 1.25 V		-36		
	V <sub>DD</sub> = 2.7 V, V <sub>O</sub> = 2.375 V			-25	
I <sub>OL</sub> Low-level output current	V <sub>DD</sub> = 2.3 V, V <sub>O</sub> = 1.2 V	20			mA
	V <sub>DD</sub> = 2.5 V, V <sub>O</sub> = 1.25 V		36		
	V <sub>DD</sub> = 2.7 V, V <sub>O</sub> = 0.3 V			25	

- (1) All typical values are with respect to nominal V<sub>DD</sub>.

**SWITCHING CHARACTERISTICS**

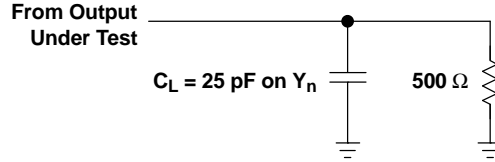
over recommended operating free-air temperature range (unless otherwise noted)

PARAMETER		TEST CONDITIONS	MIN	TYP <sup>(1)</sup>	MAX	UNIT
<b>V<sub>DD</sub> = 3.3 V ±0.3 V (see Figure 2)</b>						
t <sub>PLH</sub>	CLK to Yn	f = 0 MHz to 200 MHz	1		2.8	ns
t <sub>PHL</sub>			1		2.8	
t <sub>sk(o)</sub>	Output skew (Ym to Yn) <sup>(2)</sup> (see Figure 4)			100	150	ps
t <sub>sk(p)</sub>	Pulse skew (see Figure 5)				250	ps
t <sub>sk(pp)</sub>	Part-to-part skew				350	ps
t <sub>r</sub>	Rise time	V <sub>O</sub> = 0.4 V to 2 V	1.3		2.7	V/ns
t <sub>f</sub>	Fall time	V <sub>O</sub> = 2 V to 0.4 V	1.3		2.7	V/ns
t <sub>su(en)</sub>	Enable setup time, G_high before CLK ↓		0.1			ns
t <sub>su(dis)</sub>	Disable setup time, G_low before CLK ↓		0.1			ns
t <sub>h(en)</sub>	Enable hold time, G_high after CLK ↓		0.4			ns
t <sub>h(dis)</sub>	Disable hold time, G_low after CLK ↓		0.4			ns
<b>V<sub>DD</sub> = 2.5 V ±0.2 V (see Figure 2)</b>						
t <sub>PLH</sub>	CLK to Yn	f = 0 MHz to 200 MHz	1.3		4	ns
t <sub>PHL</sub>			1.3		4	
t <sub>sk(o)</sub>	Output skew (Ym to Yn) <sup>(2)</sup> (see Figure 4)			150	230	ps
t <sub>sk(p)</sub>	Pulse skew (see Figure 5)				280	ps
t <sub>sk(pp)</sub>	Part-to-part skew				400	ps
t <sub>r</sub>	Rise time	V <sub>O</sub> = 0.4 V to 1.7 V	0.5		1.6	V/ns
t <sub>f</sub>	Fall time	V <sub>O</sub> = 1.7 V to 0.4 V	0.5		1.6	V/ns
t <sub>su(en)</sub>	Enable setup time, G_high before CLK ↓		0.1			ns
t <sub>su(dis)</sub>	Disable setup time, G_low before CLK ↓		0.1			ns
t <sub>h(en)</sub>	Enable hold time, G_high after CLK ↓		0.4			ns
t <sub>h(dis)</sub>	Disable hold time, G_low after CLK ↓		0.4			ns

 (1) All typical values are with respect to nominal V<sub>DD</sub>.

 (2) The t<sub>sk(o)</sub> specification is only valid for equal loading of all outputs.

PARAMETER MEASUREMENT INFORMATION



- A.  $C_L$  includes probe and jig capacitance.
- B. All input pulses are supplied by generators having the following characteristics: Clock Frequency  $\leq 200 \text{ MHz}$ ,  $Z_O = 50 \Omega$ ,  $t_r < 1.2 \text{ ns}$ ,  $t_f < 1.2 \text{ ns}$ .

Figure 2. Test Load Circuit

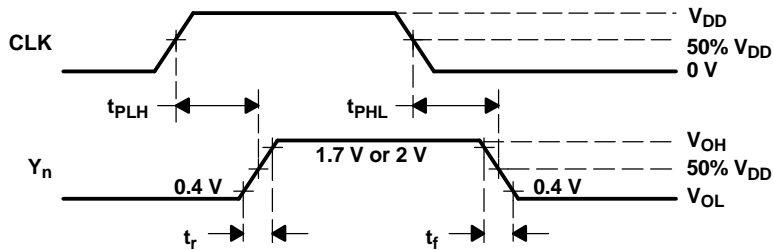


Figure 3. Voltage Waveforms Propagation Delay Times

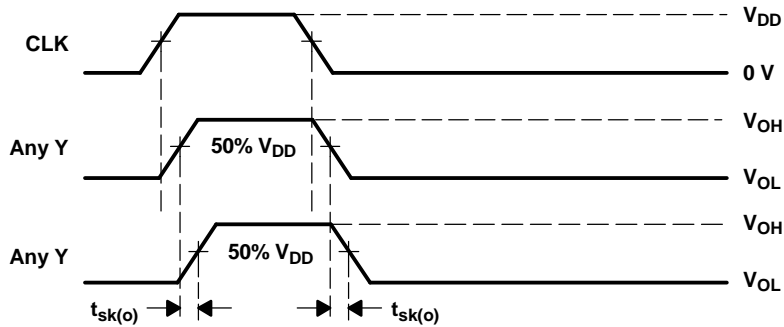
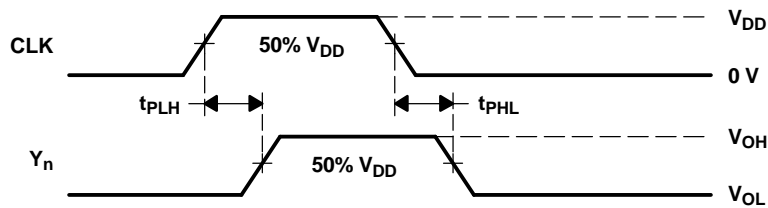


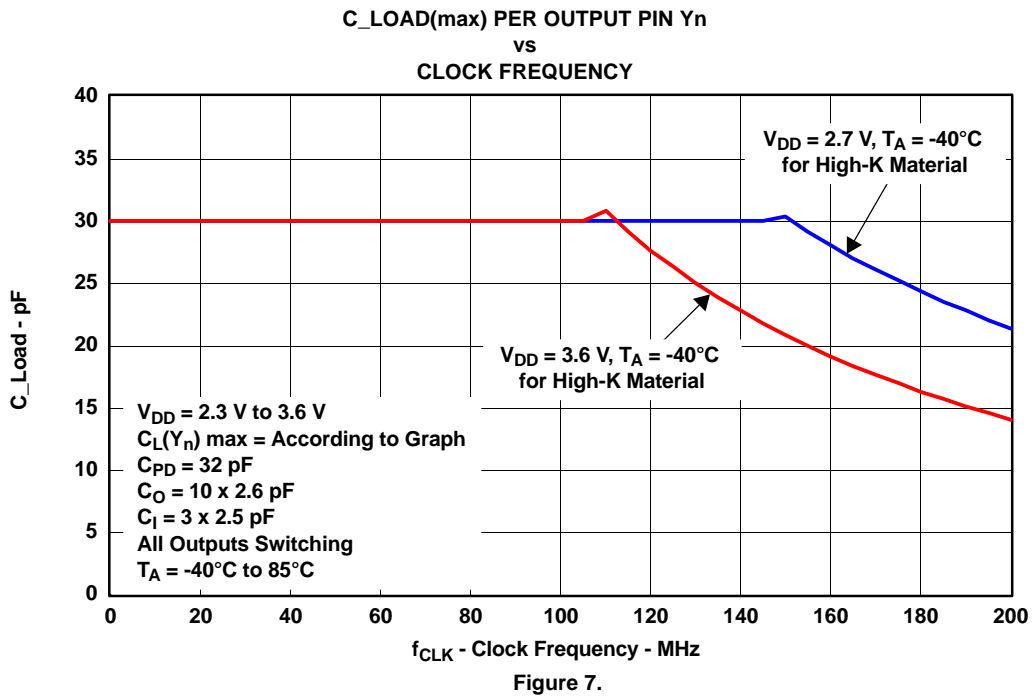
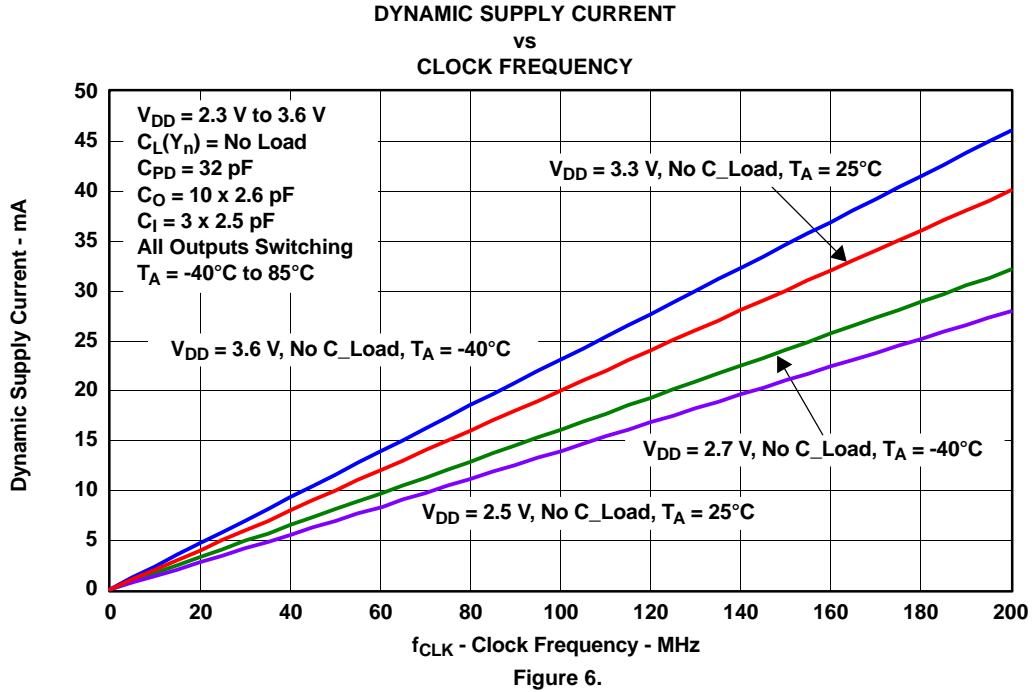
Figure 4. Output Skew



NOTE:  $t_{sk(p)} = |t_{PLH} - t_{PHL}|$

Figure 5. Pulse Skew





**PACKAGING INFORMATION**

Orderable Device	Status <sup>(1)</sup>	Package Type	Package Drawing	Pins	Package Qty	Eco Plan <sup>(2)</sup>	Lead/Ball Finish	MSL Peak Temp <sup>(3)</sup>
CDCVF310PW	ACTIVE	TSSOP	PW	24	60	Pb-Free (RoHS)	CU NIPDAU	Level-1-250C-UNLIM
CDCVF310PWR	ACTIVE	TSSOP	PW	24	2000	Pb-Free (RoHS)	CU NIPDAU	Level-1-250C-UNLIM
CDCVF310PWRG4	ACTIVE	TSSOP	PW	24	2000	Green (RoHS & no Sb/Br)	CU NIPDAU	Level-1-260C-UNLIM

<sup>(1)</sup> The marketing status values are defined as follows:

**ACTIVE:** Product device recommended for new designs.

**LIFEBUY:** TI has announced that the device will be discontinued, and a lifetime-buy period is in effect.

**NRND:** Not recommended for new designs. Device is in production to support existing customers, but TI does not recommend using this part in a new design.

**PREVIEW:** Device has been announced but is not in production. Samples may or may not be available.

**OBSOLETE:** TI has discontinued the production of the device.

<sup>(2)</sup> Eco Plan - The planned eco-friendly classification: Pb-Free (RoHS) or Green (RoHS & no Sb/Br) - please check <http://www.ti.com/productcontent> for the latest availability information and additional product content details.

**TBD:** The Pb-Free/Green conversion plan has not been defined.

**Pb-Free (RoHS):** TI's terms "Lead-Free" or "Pb-Free" mean semiconductor products that are compatible with the current RoHS requirements for all 6 substances, including the requirement that lead not exceed 0.1% by weight in homogeneous materials. Where designed to be soldered at high temperatures, TI Pb-Free products are suitable for use in specified lead-free processes.

**Green (RoHS & no Sb/Br):** TI defines "Green" to mean Pb-Free (RoHS compatible), and free of Bromine (Br) and Antimony (Sb) based flame retardants (Br or Sb do not exceed 0.1% by weight in homogeneous material)

<sup>(3)</sup> MSL, Peak Temp. -- The Moisture Sensitivity Level rating according to the JEDEC industry standard classifications, and peak solder temperature.

**Important Information and Disclaimer:**The information provided on this page represents TI's knowledge and belief as of the date that it is provided. TI bases its knowledge and belief on information provided by third parties, and makes no representation or warranty as to the accuracy of such information. Efforts are underway to better integrate information from third parties. TI has taken and continues to take reasonable steps to provide representative and accurate information but may not have conducted destructive testing or chemical analysis on incoming materials and chemicals. TI and TI suppliers consider certain information to be proprietary, and thus CAS numbers and other limited information may not be available for release.

In no event shall TI's liability arising out of such information exceed the total purchase price of the TI part(s) at issue in this document sold by TI to Customer on an annual basis.

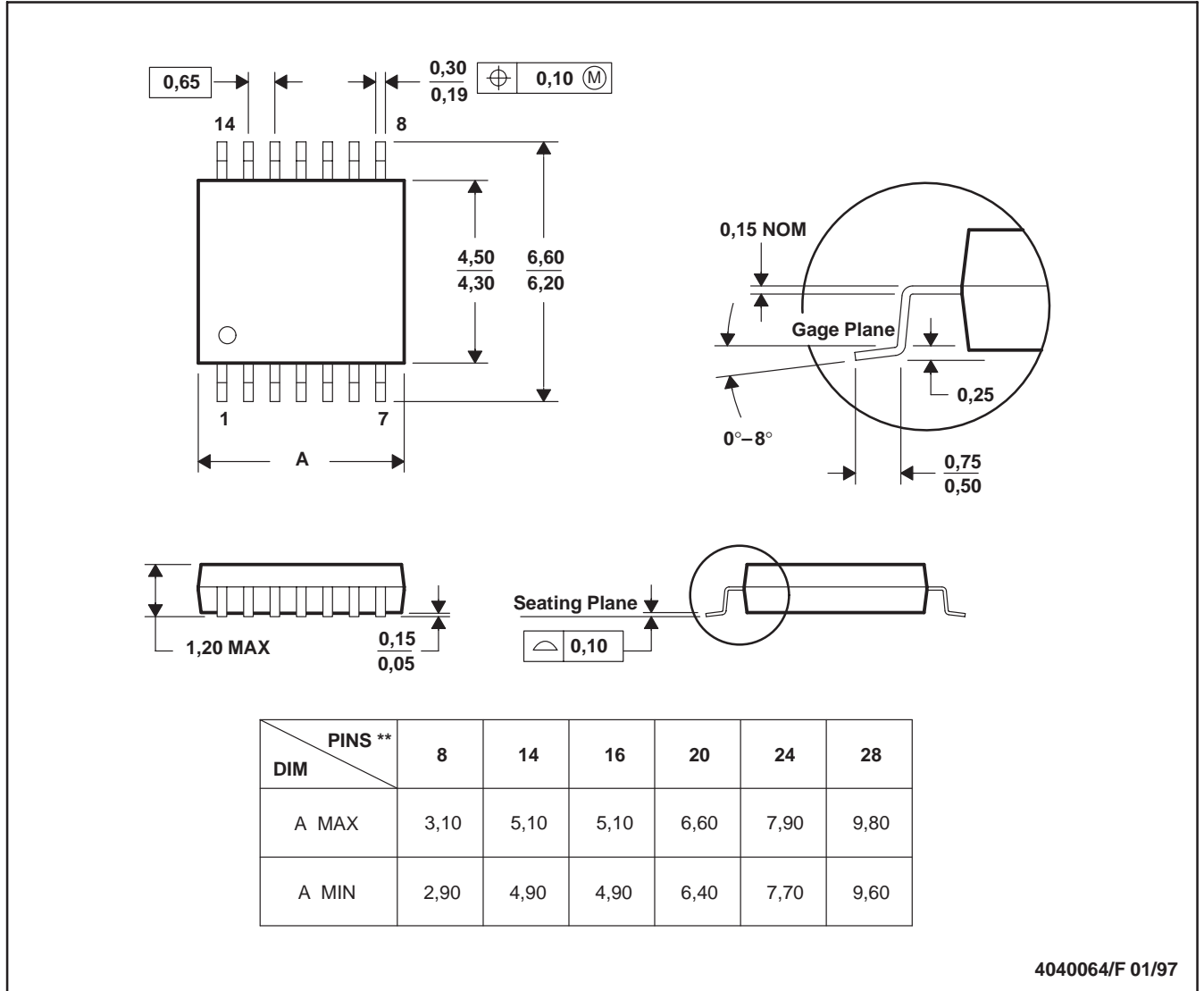
# MECHANICAL DATA

MTSS001C – JANUARY 1995 – REVISED FEBRUARY 1999

**PW (R-PDSO-G\*\*)**

**PLASTIC SMALL-OUTLINE PACKAGE**

14 PINS SHOWN



4040064/F 01/97

- NOTES: A. All linear dimensions are in millimeters.  
 B. This drawing is subject to change without notice.  
 C. Body dimensions do not include mold flash or protrusion not to exceed 0,15.  
 D. Falls within JEDEC MO-153

## IMPORTANT NOTICE

Texas Instruments Incorporated and its subsidiaries (TI) reserve the right to make corrections, modifications, enhancements, improvements, and other changes to its products and services at any time and to discontinue any product or service without notice. Customers should obtain the latest relevant information before placing orders and should verify that such information is current and complete. All products are sold subject to TI's terms and conditions of sale supplied at the time of order acknowledgment.

TI warrants performance of its hardware products to the specifications applicable at the time of sale in accordance with TI's standard warranty. Testing and other quality control techniques are used to the extent TI deems necessary to support this warranty. Except where mandated by government requirements, testing of all parameters of each product is not necessarily performed.

TI assumes no liability for applications assistance or customer product design. Customers are responsible for their products and applications using TI components. To minimize the risks associated with customer products and applications, customers should provide adequate design and operating safeguards.

TI does not warrant or represent that any license, either express or implied, is granted under any TI patent right, copyright, mask work right, or other TI intellectual property right relating to any combination, machine, or process in which TI products or services are used. Information published by TI regarding third-party products or services does not constitute a license from TI to use such products or services or a warranty or endorsement thereof. Use of such information may require a license from a third party under the patents or other intellectual property of the third party, or a license from TI under the patents or other intellectual property of TI.

Reproduction of information in TI data books or data sheets is permissible only if reproduction is without alteration and is accompanied by all associated warranties, conditions, limitations, and notices. Reproduction of this information with alteration is an unfair and deceptive business practice. TI is not responsible or liable for such altered documentation.

Resale of TI products or services with statements different from or beyond the parameters stated by TI for that product or service voids all express and any implied warranties for the associated TI product or service and is an unfair and deceptive business practice. TI is not responsible or liable for any such statements.

Following are URLs where you can obtain information on other Texas Instruments products and application solutions:

<b>Products</b>		<b>Applications</b>	
Amplifiers	<a href="http://amplifier.ti.com">amplifier.ti.com</a>	Audio	<a href="http://www.ti.com/audio">www.ti.com/audio</a>
Data Converters	<a href="http://dataconverter.ti.com">dataconverter.ti.com</a>	Automotive	<a href="http://www.ti.com/automotive">www.ti.com/automotive</a>
DSP	<a href="http://dsp.ti.com">dsp.ti.com</a>	Broadband	<a href="http://www.ti.com/broadband">www.ti.com/broadband</a>
Interface	<a href="http://interface.ti.com">interface.ti.com</a>	Digital Control	<a href="http://www.ti.com/digitalcontrol">www.ti.com/digitalcontrol</a>
Logic	<a href="http://logic.ti.com">logic.ti.com</a>	Military	<a href="http://www.ti.com/military">www.ti.com/military</a>
Power Mgmt	<a href="http://power.ti.com">power.ti.com</a>	Optical Networking	<a href="http://www.ti.com/opticalnetwork">www.ti.com/opticalnetwork</a>
Microcontrollers	<a href="http://microcontroller.ti.com">microcontroller.ti.com</a>	Security	<a href="http://www.ti.com/security">www.ti.com/security</a>
		Telephony	<a href="http://www.ti.com/telephony">www.ti.com/telephony</a>
		Video & Imaging	<a href="http://www.ti.com/video">www.ti.com/video</a>
		Wireless	<a href="http://www.ti.com/wireless">www.ti.com/wireless</a>

Mailing Address: Texas Instruments  
Post Office Box 655303 Dallas, Texas 75265