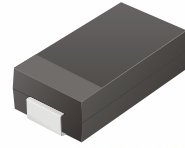


SMD General Purpose Rectifier



CGRA4001 Thru CGRA4007

Glass Passivated Type
Reverse Voltage: 50 - 1000 Volts
Forward Current: 1.0 Amp

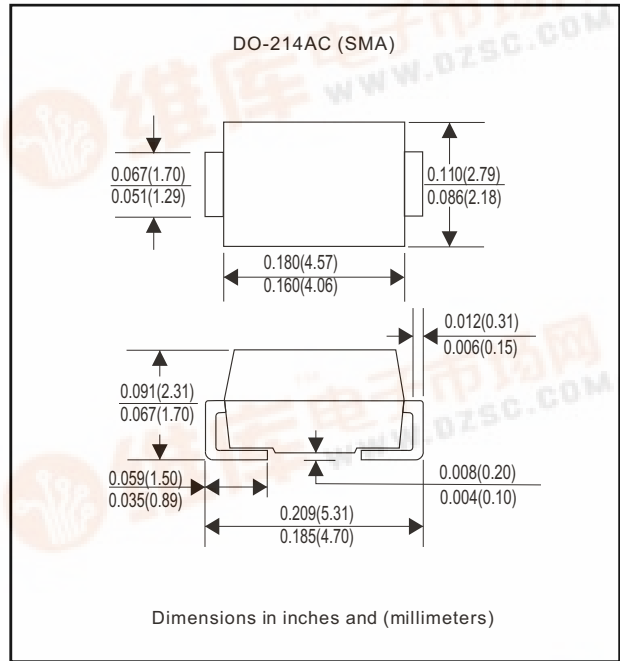


Features

- Ideal for surface mount applications
- Easy pick and place
- Plastic package has Underwriters Lab. flammability classification 94V-0
- Built-in strain relief
- High surge current capability

Mechanical data

- Case: JEDEC DO-214AC molded plastic
- Terminals: solderable per MIL-STD-750, method 2026
- Polarity: Color band denotes cathode end
- Mounting position: Any
- Approx. Weight: 0.063 gram



Maximum Ratings and Electrical Characteristics

Parameter	Symbol	CGRA 4001	CGRA 4002	CGRA 4003	CGRA 4004	CGRA 4005	CGRA 4006	CGRA 4007	Unit	
Max. Repetitive Peak Reverse Voltage	VRRM	50	100	200	400	600	800	1000	v	
Max. DC Blocking Voltage	VDC	50	100	200	400	600	800	1000	v	
Max. RMS Voltage	VRMS	35	70	140	280	420	560	700	v	
Peak Surge Forward Current 8.3ms single halfsine-wave superimposed on rate load (JEDEC method)	IFSM	30							A	
Max. Average Forward Current	Io	1.0							A	
Max. Instantaneous Forward Current at 1.0 A	VF	1.1							v	
Max. DC Reverse Current at Rated DC Blocking Voltage Ta=25°C Ta=100°C	IR	5 50							uA	
Max. Thermal Resistance (Note 1)	RθJA	75					85			°C/W
Operating Junction Temperature	Tj	-55 to +150							°C	
Storage Temperature	TSTG	-55 to +150							°C	

Note 1: Thermal resistance from junction to ambient.



Rating and Characteristic Curves (CGRA4001 Thru CGRA4007)

Fig. 1 - Reverse Characteristics

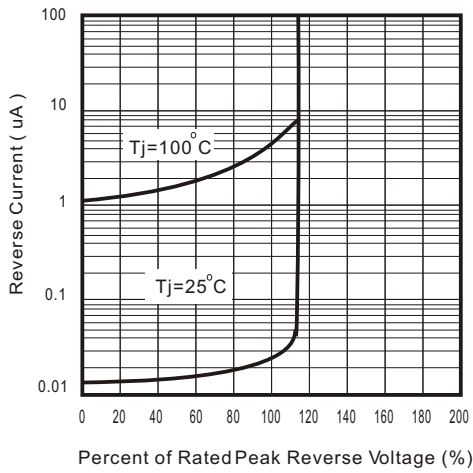


Fig.2 - Forward Characteristics

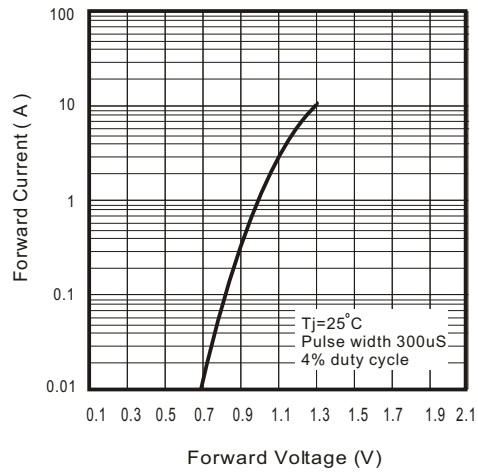


Fig. 3 - Junction Capacitance

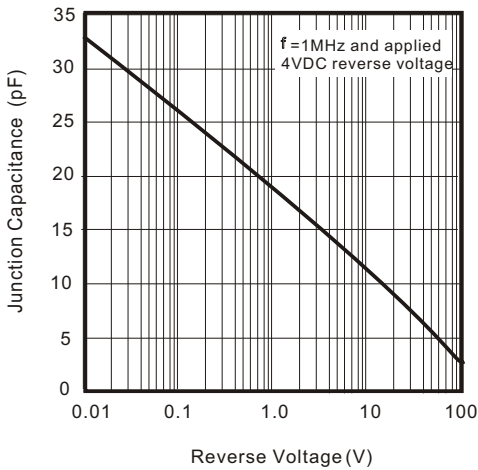


Fig. 4 - Current Derating Curve

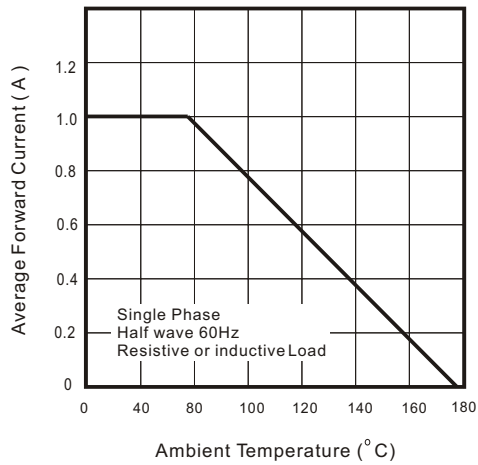


Fig. 5 - Non Repetitive Forward Surge Current

