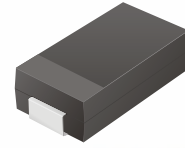


# SMD General Purpose Rectifier



## CGRB201 Thru CGRB207

Glass Passivated Type  
Reverse Voltage: 50 - 1000 Volts  
Forward Current: 2.0 Amp

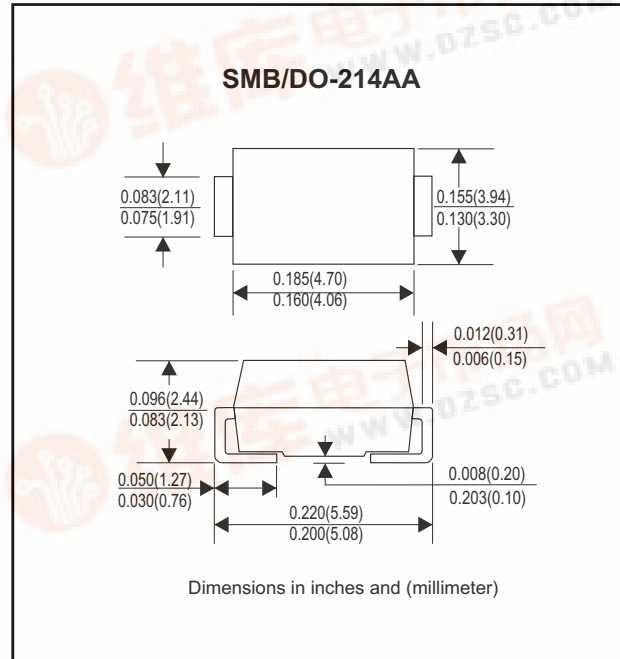


### Features

- Ideal for surface mount applications
- Easy pick and place
- Plastic package has Underwriters Lab. flammability classification 94V-0
- Built-in strain relief
- High surge current capability

### Mechanical data

- Case: JEDEC DO-214AA molded plastic
- Terminals: solderable per MIL-STD-750, method 2026
- Polarity: Color band denotes cathode end
- Mounting position: Any
- Approx. Weight: 0.093 gram



### Maximum Ratings and Electrical Characteristics

Parameter	Symbol	CGRB 201	CGRB 202	CGRB 203	CGRB 204	CGRB 205	CGRB 206	CGRB 207	Unit
Max. Repetitive Peak Reverse Voltage	VRRM	50	100	200	400	600	800	1000	v
Max. DC Blocking Voltage	VDC	50	100	200	400	600	800	1000	v
Max. RMS Voltage	VRMS	35	70	140	280	420	560	700	v
Peak Surge Forward Current 8.3ms single halfsine-wave superimposed on rate load ( JEDEC method )	IFSM	60							A
Max. Average Forward Current	Io	2.0							A
Max. Instantaneous Forward Current at 2.0 A	VF	1.1							v
Max. DC Reverse Current at Rated DC Blocking Voltage Ta=25°C Ta=100°C	IR	5 50							uA
Max. Thermal Resistance (Note 1)	RθJL	16							°C/W
Operating Junction Temperature	Tj	-55 to +150							°C
Storage Temperature	TSTG	-55 to +150							°C

Note 1: Thermal resistance from junction to lead 8.0x8.0 mm square (0.13mm thick) land areas.



## Rating and Characteristic Curves (CGRB201 Thru CGRB207)

Fig. 1 - Reverse Characteristics

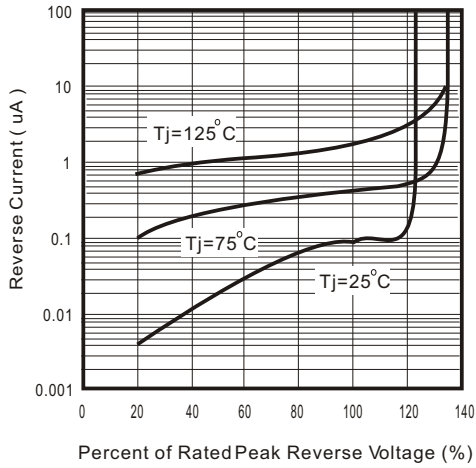


Fig.2 - Forward Characteristics

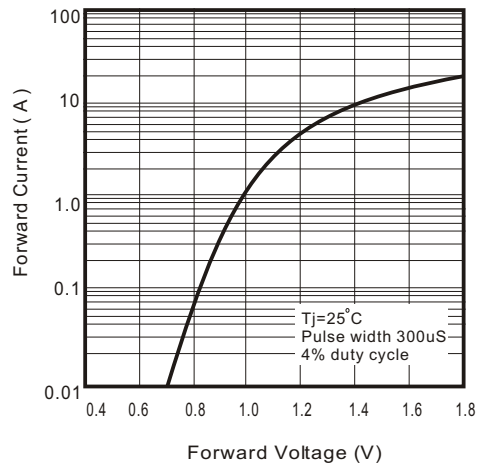


Fig. 3 - Junction Capacitance

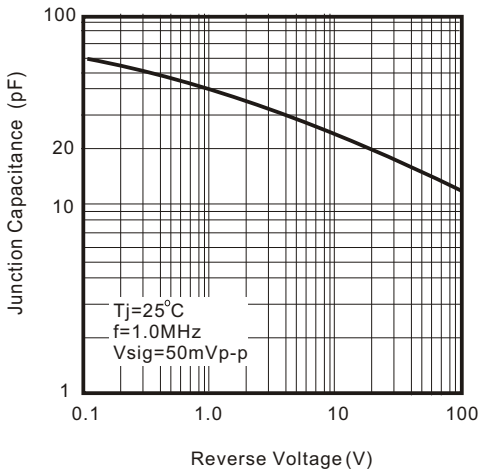


Fig. 4 - Current Derating Curve

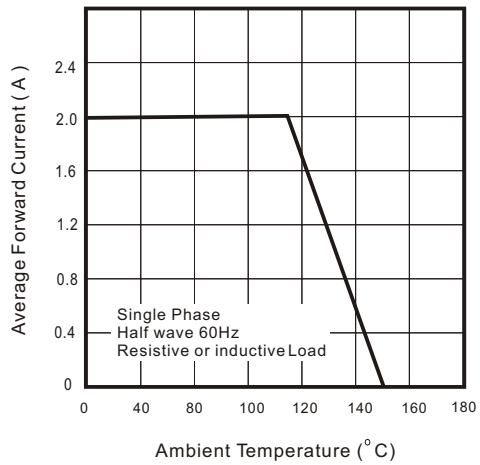


Fig. 5 - Non Repetitive Forward Surge Current

