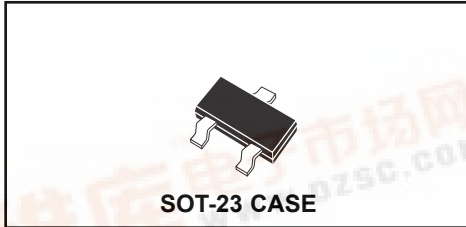


CMPTA06 NPN
CMPTA56 PNP

SURFACE MOUNT
COMPLEMENTARY
SILICON TRANSISTORS



CentralTM

Semiconductor Corp.

DESCRIPTION:

The CENTRAL SEMICONDUCTOR CMPTA06, CMPTA56 types are complementary silicon transistors manufactured by the epitaxial planar process, epoxy molded in a surface mount package, designed for small signal general purpose and switching applications.

MARKING CODES: CMPTA06 : C1G
CMPTA56 : C2G

MAXIMUM RATINGS: (T_A=25°C)

Collector-Base Voltage
Collector-Emitter Voltage
Emitter-Base Voltage
Collector Current
Base Current
Peak Base Current
Power Dissipation
Operating and Storage
Junction Temperature
Thermal Resistance

SYMBOL

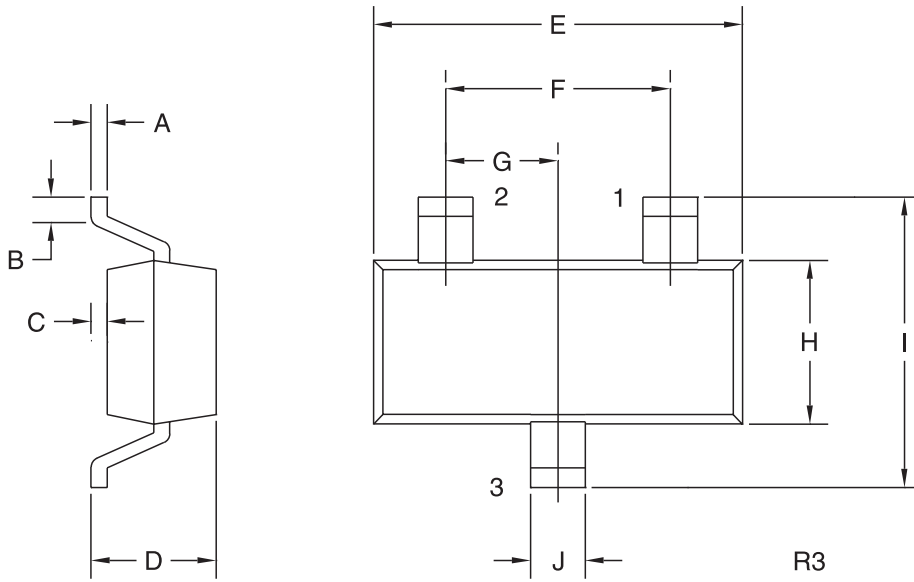
SYMBOL		UNITS
V _{CB0}	80	V
V _{CEO}	80	V
V _{EBO}	4.0	V
I _C	500	mA
I _B	100	mA
I _{BM}	200	mA
P _D	350	mW
T _J , T _{stg}	-65 to +150	°C
θ _{JA}	357	°C/W

ELECTRICAL CHARACTERISTICS (T_A=25°C unless otherwise noted)

SYMBOL	TEST CONDITIONS	MIN	MAX	UNITS
I _{CBO}	V _{CB} =80V		100	nA
I _{CBO}	V _{CB} =80V, T _A =150°C		20	μA
I _{CEO}	V _{CE} =60V		100	nA
BV _{CEO}	I _C =1.0mA	80		V
BV _{EBO}	I _E =100μA	4.0		V
V _{CE(SAT)}	I _C =100mA, I _B =10mA		0.25	V
V _{BE(ON)}	V _{CE} =1.0V, I _C =100mA		1.20	V
h _{FE}	V _{CE} =1.0V, I _C =10mA	100		
h _{FE}	V _{CE} =1.0V, I _C =100mA	100		
f _T	V _{CE} =2.0V, I _C =10mA, f=100MHz (CMPTA06)	100		MHz
f _T	V _{CE} =1.0V, I _C =100mA, f=100MHz (CMPTA56)	50		MHz

R5 (13-November 2002)

SOT-23 CASE - MECHANICAL OUTLINE



LEAD CODE:

- 1) BASE
- 2) EMITTER
- 3) COLLECTOR

MARKING CODE:

CMPTA06: C1G
CMPTA56: C2G

SYMBOL	INCHES		MILLIMETERS	
	MIN	MAX	MIN	MAX
A	0.003	0.007	0.08	0.18
B	0.006	-	0.15	-
C	-	0.005	-	0.13
D	0.035	0.043	0.89	1.09
E	0.110	0.120	2.80	3.05
F	0.075		1.90	
G	0.037		0.95	
H	0.047	0.055	1.19	1.40
I	0.083	0.098	2.10	2.49
J	0.014	0.020	0.35	0.50

SOT-23 (REV: R3)