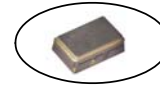


CVT32 Model
3.2X5 mm SMD, 3V, TCVCXO

Frequency Range: 10MHz to 30MHz
Calibration Tolerance: ±1.5ppm
Frequency Stability: ±2.5ppm
Temperature Range: -20°C to 80°C
Storage: -40°C to 90°C
Input Voltage: 3.0V ± 10%
Input Current: 1.2mA Typ., 2mA Max
Output: 0.8Vp-p Min
 Waveform: Clipped Sine
 Load: 6-15Kohm // 2-10pF
Voltage Control: 1.5V ± 1.0V
 Vcont Trim: ±4ppm Min, ±12ppm Max
Harmonics: -12 dBc Max
Phase Noise: -83 dBc/Hz Max 10Hz offset
 -115 dBc/Hz Max 100Hz offset
 -135 dBc/Hz Max 1KHz offset
 -140 dBc/Hz Max 10KHz offset
Aging: 1ppm Max / yr



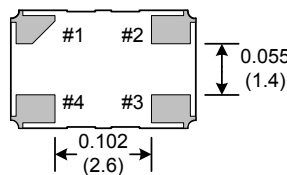
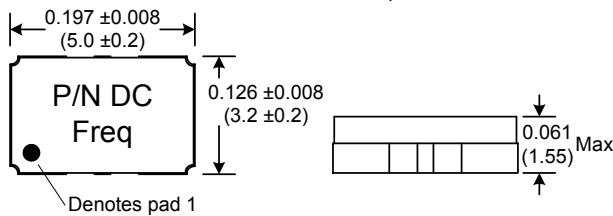
Temperature Compensated Crystal Oscillator Voltage Trim



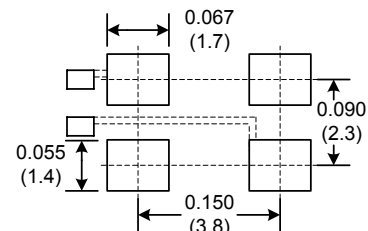
Designed to meet today's requirements for precision operation and small layout applications. Temperature compensation is accomplished through digital technology. Standard packaging is 1K tape and reel.

Dimensions inches (mm)

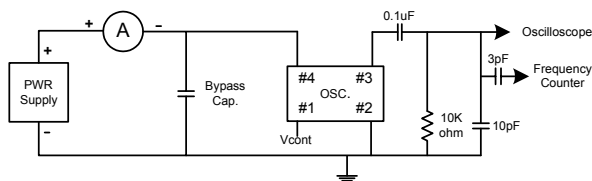
All dimensions are Max unless otherwise specified.



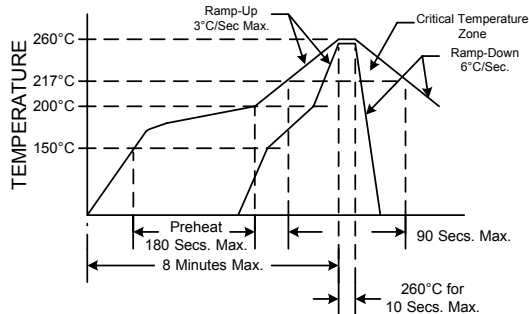
SUGGESTED PAD LAYOUT



.1uF Bypass Capacitor Recommended



RECOMMENDED REFLOW SOLDERING PROFILE



NOTE: Reflow Profile with 240°C peak also acceptable.

Crystek Part Number Guide	
Part Number	Frequency Stability
CVT32-Frequency	± 2.5ppm
Example: P/N CVT32-19.680MHZ = 3.0V Input Voltage ±1.5ppm Calibration Tolerance ±2.5ppm Frequency Stability -20°C to 80°C Operating Temp. Volt. Trim, Clipped Sinewave	

Note* Not Recommended for ultrasonic wash

Specifications subject to change without notice.

TD-030301 Rev. E



Crystek Crystals Corporation

12730 Commonwealth Drive • Fort Myers, FL 33913
239.561.3311 • 800.237.3061 • FAX: 239.561.1025 • www.crystek.com