

## Compass/Thermometer Stopwatch

Multi-Function Stopwatch displays Direction, Temperature, and Time

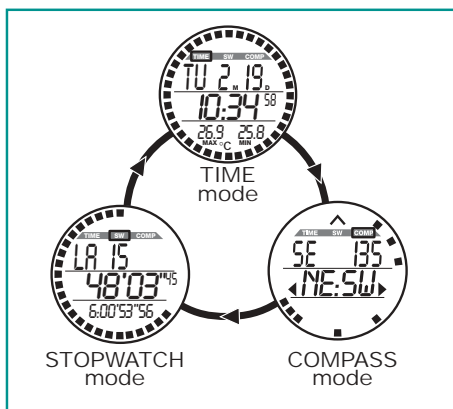
### Features:

- Digital Compass mode with numeric and graphic readouts
- Compass accuracy (resolution):  $\pm 5$  degree (1 degree)
- Temperature measurement with Max/Min record and recall
- 12 or 24 hour clock operation
- Stopwatch/Chronograph mode with 1/100sec resolution
- 30 Lap/split memory
- Fastest lap recall
- Programmable alarm
- Complete with 39" (1m) lanyard and one 3V CR2032 battery

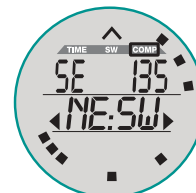
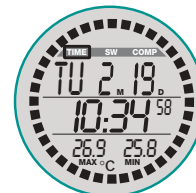


### Specifications

Timing capacity:	9hrs, 59mins, and 59secs
Accuracy:	$\pm 5$ seconds/day
Lap Memory	30 laps
Temperature:	14 to 122°F (-10 to 50°C)
Accuracy (Resolution):	$\pm 2^\circ\text{F}/^\circ\text{C}$ (0.1°)
Dimensions:	3.25x 2.4x0.88" (83x63x23mm)
Weight:	2.5oz (70g)



Stopwatch with 3 modes: Compass, Time/Temperature, and Stopwatch

**COMPASS™**  
**Watch**COMPASS  
modeSTOPWATCH  
modeTIME/  
TEMPERATURE  
mode

### Ordering Information:

CW40 .....Compass/Thermometer Stopwatch

EXTECH INSTRUMENTS CORPORATION  
285 Bear Hill Road, Waltham, MA 02451-1064, U.S.A.  
Phone: 781-890-7440 • FAX 781-890-7864

ISO 9001:2000 CERTIFIED

Make mine an Extech!  
[www.extech.com](http://www.extech.com)



08/03 - R1