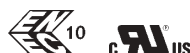


POWER ENTRY MODULES

DC21

Power entry module Type DC21

- Panel mount: screw-on version, rear side
- Appliance inlet with line switch 2-pole, for PCB



Characteristics

- All single elements are already wired
- Unwired versions available on request
- Line switch non-illuminated or illuminated
- Qualified for use in equipment according to IEC/EN 60950
- Can be ordered without insulation cover

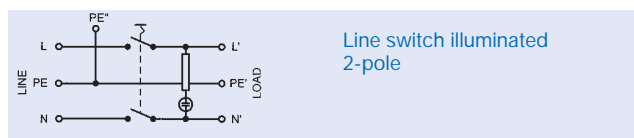
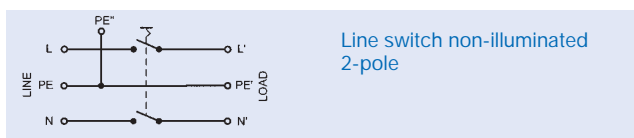
Technical data

Rated voltage	125/250 VAC
Rated current	10 A/250V VDE 11 A/125-250V UL / CSA
Dielectric strength (50 Hz, 1 Min.)	> 2,5 kV between L-N > 3 kV between L/N-PE
Allowable operating temperatures T _a	-25 °C to +70 °C
Degree of protection (fr.s)	IP40 acc. to IEC 60529
Protection class	suitable for equipment with prot. cl. I, acc. to IEC 61140
Terminals	for PCB
Panel thickness s	max. 3,5 mm
Materials: Housing	Thermoplastic, black, UL94 V-0
Appliance-inlet	acc. to IEC/EN 60320-1/C14, Protection class I, pin-temperature 70 °C (cold condition)

DC21 Switch

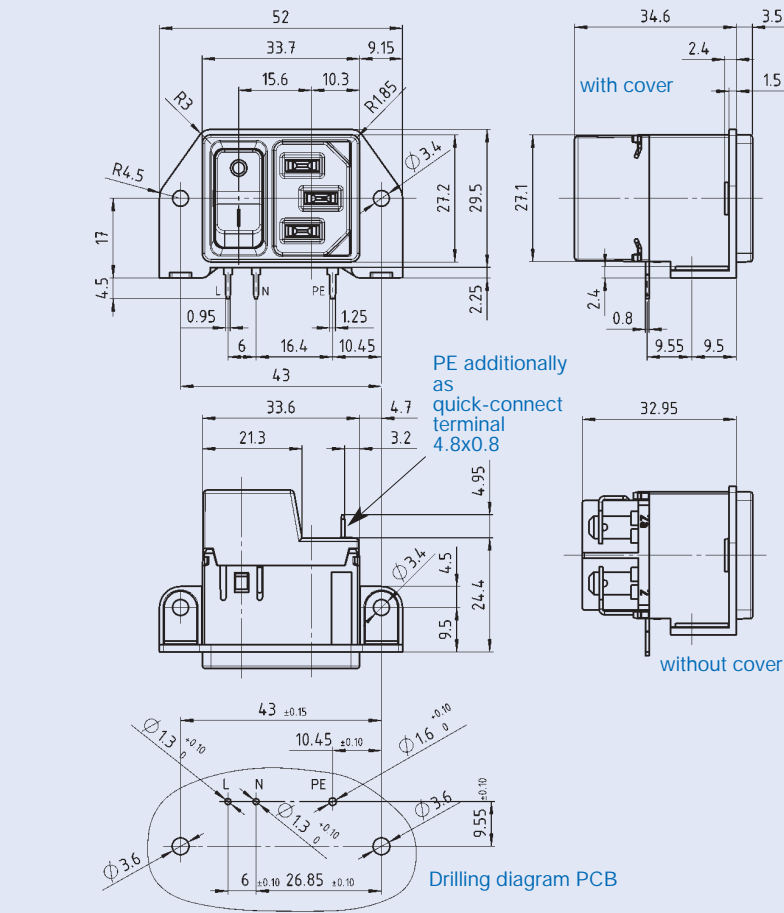
Line switch (Rocker switch)	1- or 2-pole, non-illuminated or illuminated, acc. to IEC/EN 61058-1.
Electrical rating acc. to IEC/EN 61058-1	16 (4) A / 250 VAC, 10'000 switch operations 10 (4) A / 250 VAC, 50'000 switch operations Statement () at inductive load with p. f. 0.6
Electrical rating acc. to UL1054	20 A 125 - 250 VAC, 6'000 Switch operations (1) HP 125 VAC (2) HP 250 VAC Statement () at inductive load with p. f. 0.45
Inrush current acc. to IEC/EN 61058-1	capacitive 100A, 3-4 ms continuous current 5 A
Contact gap	≥ 3 mm

Diagrams

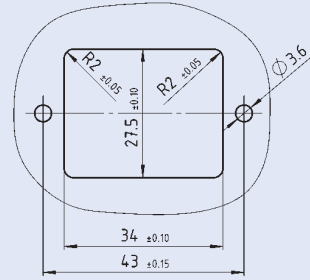


DC21

Screw-on mounting



Panel cut-out



Order Numbers socket, with internal connections

with cover	Line switch 2-pole 125/250VAC		
	non-illuminated	illuminated, red	illuminated, green
DC21.0021.1111	●		
DC21.0023.1111		●	
DC21.0024.1111			●

Other versions on request:

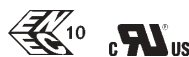
- 1-pole version illuminated and non-illuminated
- Version without cover
- for protection class II
- Line-switch with other rocker marking
- Fixing on PCB with self-tapping screws 3 mm or pre-inserted nuts M3

POWER ENTRY MODULES

DC22

Power entry module Type DC22

- Panel mount: screw-on version, rear-side
- Appliance inlet, line switch 1- or 2-pole, line-filter standard and medical versions, for PCB



Medical filters

Characteristics

- Ultra-compact design with smallest panel cut-out
- Line switch illuminated or non-illuminated
- With EMC-Shield
- Qualifield for use in equipment according to IEC/EN 60950

Technical data

Rated voltage	125/250 VAC; 50/60 Hz
Rated currents	1–10 A; @ T _a 40°C
Leakage current, Standard	< 0,5 mA (250 V/60 Hz)
Medical (M5)	< 5 µA (250 V / 60 Hz)
Test voltage (2 sec)	1,7 kVDC between L-N 2,7 kVDC between L/N-PE
Allowable operation temperatures T _a	–25 °C at +85 °C
Climatic category	25/085/21 acc. to IEC/EN 60068-1
Degree of protection (front-side)	IP40 acc. to IEC 60529
Protection class	suitable for equipment with prot. cl. I, acc. to IEC 61140
Terminals	for PCB
Panel thickness s	max. 4,0 mm
Materials: Housing	Thermoplastic, black, UL94 V-0
Appliance-inlet	acc. to IEC/EN 60320-1/C14, Protection class I, pin-temperature 70 °C (cold condition)
Line filter, standard and medical	acc. to IEC 60939, EN 133 200, UL 1283, CSA C22.2 no. 8

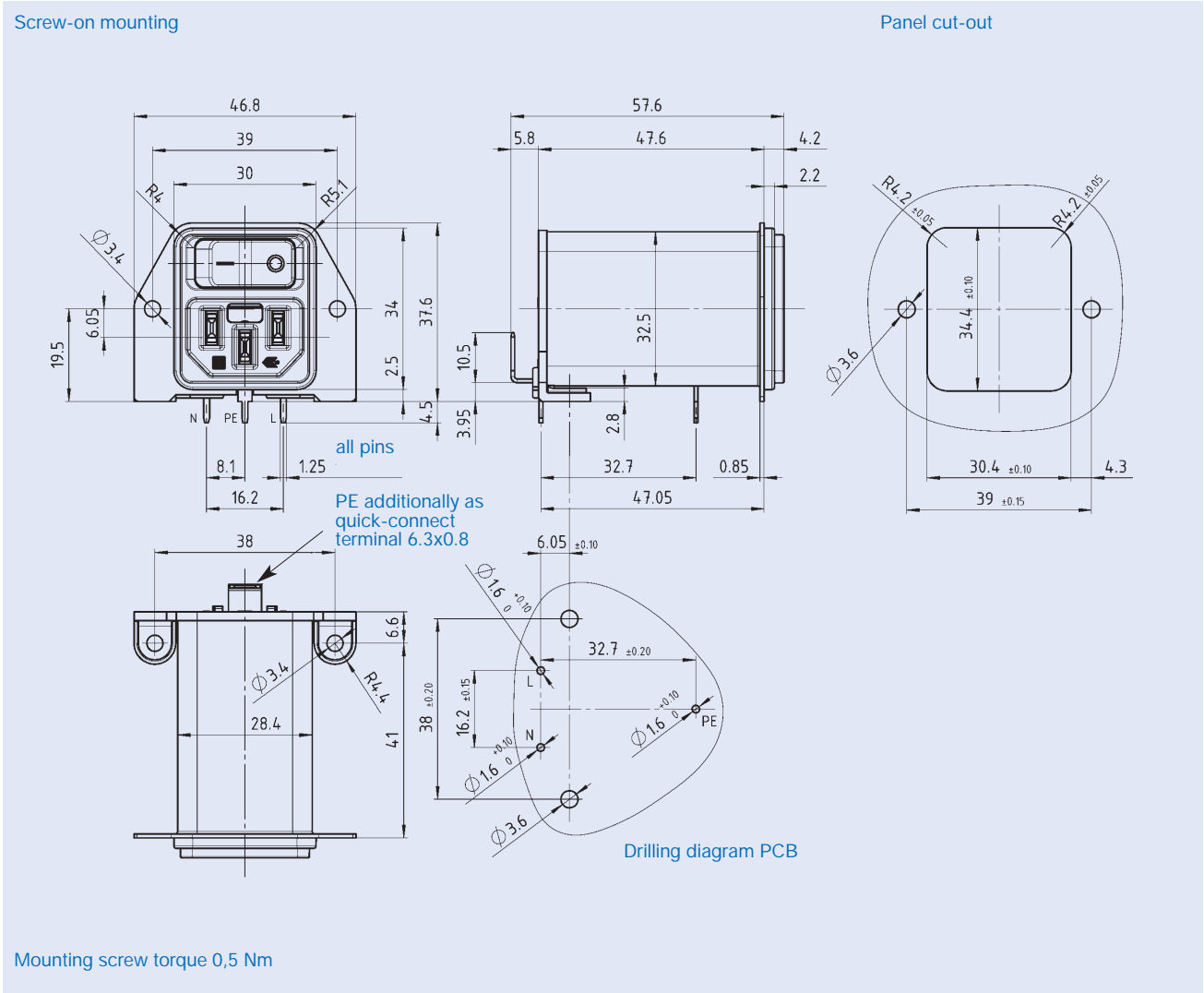
DC22 Switch

Line switch (Rocker switch)	1- or 2-pole, non-illuminated acc. to IEC/EN 61058-1
Electrical rating acc. to IEC/EN 61058-1	16 (4) A / 250 VAC, 10'000 switch operations 10 (4) A / 250 VAC, 50'000 switch operations Statement () at inductive load with p. f. 0.6
Electrical rating acc. to UL1054	20 A 125 - 250 VAC, 6'000 switch operations (1) HP 125 VAC (2) HP 250 VAC Statement () at inductive load with p. f. 0.45
Inrush current acc. to IEC/EN 61058-1	capacitive 100 A, 3-4 ms continuous current 5 A
Contact gap	≥ 3 mm

POWER ENTRY MODULES

DC22

Dimensions



Technical data of filter-components

Rated current (A)	Filter-Type	Inductance	Capacitance		R (MΩ)
		L1/L2 (mH)	CX2 (nF)	CY2 (nF)	
1	Standard	10.0	100	2 x 2,2	1
2		4.0			1
4		1.5			1
6		0.8			1
10		0.3			1
1	Medical (M5)	10.0	100	-	1
2		4.0			1
4		1.5			1
6		0.8			1
10		0.3			1

POWER ENTRY MODULES

DC22

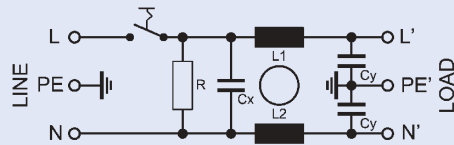
Standard version

Medical version

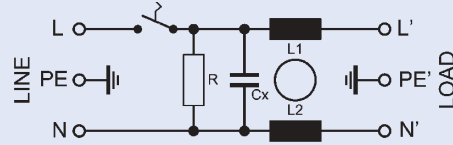


Medical filters

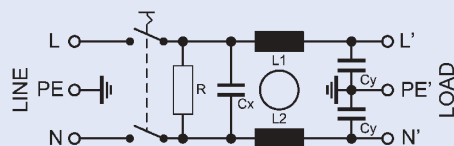
Standard filter 1-pole



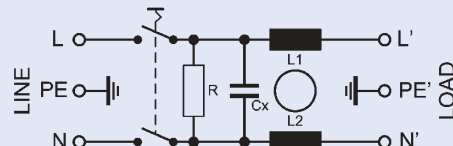
Medical filter 1-pole (M5)



Standard filter 2-pole



Medical filter 2-pole (M5)



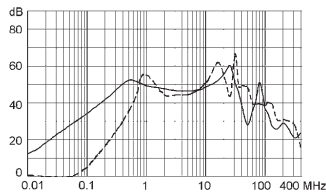
Attenuation loss

Standard version

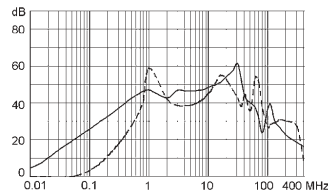
differential mode
common mode ———

Medical version

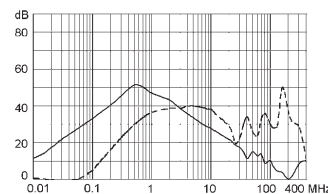
1 A



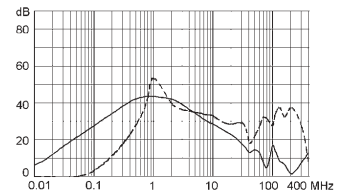
2 A



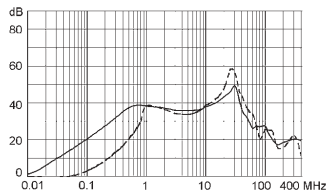
1 A



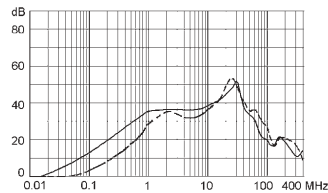
2 A



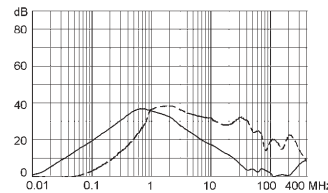
4 A



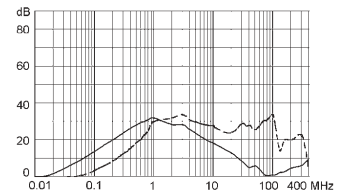
6 A



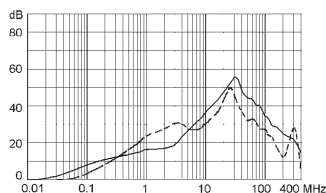
4 A



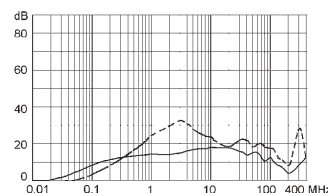
6 A



10 A



10 A



POWER ENTRY MODULES

DC22

Order Numbers

Standard		Medical (M5)		Line switch	
1-pole	2-pole	2-pole	Rated Current	non-illuminated	illuminated 125/250VAC, red
DC22.1111.111	DC22.1121.111	DC22.1221.111	1	•	
DC22.2111.111	DC22.2121.111	DC22.2221.111	2	•	
DC22.4111.111	DC22.4121.111	DC22.4221.111	4	•	
DC22.6111.111	DC22.6121.111	DC22.6221.111	6	•	
DC22.9111.111	DC22.9121.111	DC22.9221.111	10	•	
	DC22.1123.111	DC22.1223.111	1		•
	DC22.2123.111	DC22.2223.111	2		•
	DC22.4123.111	DC22.4223.111	4		•
	DC22.6123.111	DC22.6223.111	6		•
	DC22.9123.111	DC22.9223.111	10		•

Other versions on request:

- 1-pole version illuminated
- line switch with other rocker marking
- illuminated green
- Medical type (M80) with CY2
- Capacitance CX1
- Fixing on PCB with self-tapping screws 3 mm or pre-inserted nuts M3