

Inlet with filter for PCB mounting, fuse 1-/2-pole, line switch 2-pole

Standard or Medical Fuse drawer



new



C14



70° C



Description

- Panel Mount:
Screw-on mounting on PCB, from rear-side
- 4 Functions:
Inlet Protection class I, Line switch 2-pole, Fuseholder for fuse-links 5 x 20 mm 1- or 2-pole, Line filter in standard and medical version
- PCB solder terminals
- Alternative: version without line filter [DD21](#)

Approvals

- VDE License Number: E72928
- UL License Number: 4001522
- CSA License Number: 4001522

Characteristics

- Ultra-compact design. Ideal for low profile designs
- All single elements are already wired
- For added safety "Extra-Safe" fuse drawers are available
Fuse drawer meets requirements of medical standard IEC/EN 60601-1
The fuse drawer can only be opened with the aid of a tool
The fuseholder is accessible from the equipment front
- Ideal for application with high transient loads
- Qualified for use in equipment according IEC/EN 60950

Other versions on request

- Fuse drawer 1-pole, plus spare fuse case
- Fuse drawer 2-pole, with shorting bar
- Other rocker marking
- Line switch, illuminated
- Line switch 1-pole
- Medical version M80
- Protection class II, 70°C

References

[General Product Information](#)

Weblinks

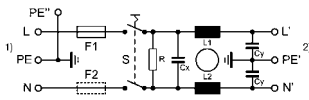
[Approvals](#), [RoHS](#), [CHINA-RoHS](#), [e-Store](#), [SCHURTER-Stock-Check](#), [Distributor-Stock-Check](#)

Technical Data

Ratings IEC	1 - 10A @ Ta 40 °C / 250VAC; 50Hz	Appliance-Inlet /-Outlet	C14 acc. to IEC/EN 60320-1 UL 498 CSA C22.2 no. 42 (for cold condition) pin-temperature 70 °C, 10A, Protection class I
Ratings UL/CSA	1 - 8A @ Ta 40 °C / 125VAC; 60Hz	Fuseholder	1 or 2 pole, Shocksafe category PC2 acc. to IEC 60127-6, for fuse-links 5 x 20mm
Dielectric Strength	> 1.7 kVDC between L-N > 2.7 kVDC between L/N-PE Test voltage (1 min/50Hz)	Rated Power Acceptance @ Ta 23 °C	5 x 20: 2W (1 pole)/ 1.6W (2-pole) per pole
Allowable Operation Temp.	-25 °C to 85 °C	Power Acceptance @ Ta > 23°C	Admissible power acceptance at higher ambient temperature see derating curves
Climatic Category	25/085/21 acc. to IEC 60068-1	Line Switch	Rocker switch 2-pole, non-illuminated, acc. to IEC 61058-1 Technical details
Degree of Protection	from front side IP 40 acc. to IEC 60529	Line Filter	Standard and Medical Version, IEC 60939, IEC 60601-1, UL 1283, UL 544, EN 133 200, CSA C22.2 no. 8 Technical details
Protection Class	Suitable for appliances with protection class I acc. to IEC 61140	MTBF	> 2'000'000h acc. to MIL-HB-217 F
Terminal	For PCB mounting 3 mm additional quick connect 6.3 x 0.8 mm		
Panel Thickness s	Screw-on: max 3mm Mounting screw torque max 0.5Nm		
Material: Housing	Thermoplastic, black, UL 94V-0		

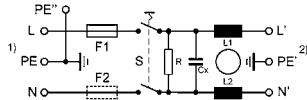
Diagrams

Filter Standard non illuminated



- 1) Line
- 2) Load

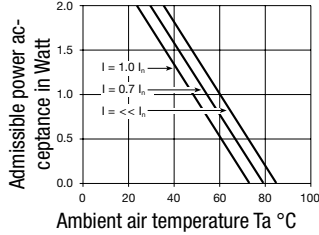
Filter Medical M5 non illuminated



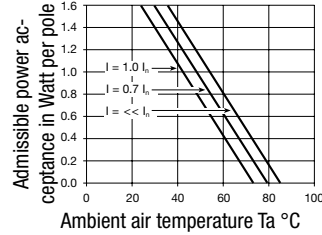
- 1) Line
- 2) Load

Derating Curves for Fuseholders

1-pole



2-pole

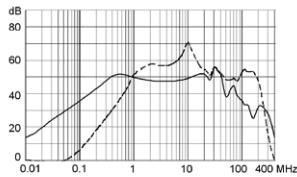


Attenuation Loss

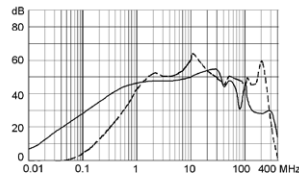
--- differential mode ____ common mode

Standard version

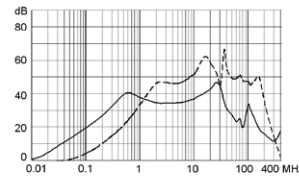
1 A



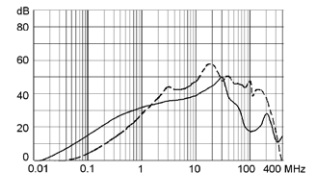
2 A



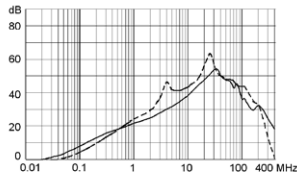
4 A



6 A

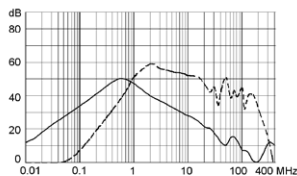


10 A

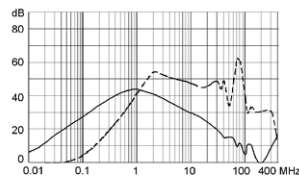


Medical version (M5)

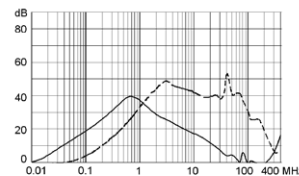
1 A



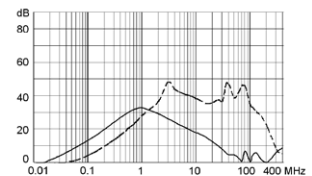
2 A



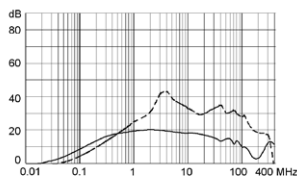
4 A



6 A



10 A



Variants

Fuse drawer must be ordered separately (see accessories).
Fingergrip and Extra Safe. The same drawer as used by type KEA.

Rated Current [A]	Filter-Type	Fuseholder	Line Switch	Order Number
1	Standard Version	1 pole	2-pole	DD22.1111.1111
2	Standard Version	1 pole	2-pole	DD22.2111.1111
4	Standard Version	1 pole	2-pole	DD22.4111.1111
6	Standard Version	1 pole	2-pole	DD22.6111.1111
10	Standard Version	1 pole	2-pole	DD22.9111.1111
1	Standard Version	2-pole	2-pole	DD22.1121.1111
2	Standard Version	2-pole	2-pole	DD22.2121.1111
4	Standard Version	2-pole	2-pole	DD22.4121.1111
6	Standard Version	2-pole	2-pole	DD22.6121.1111
10	Standard Version	2-pole	2-pole	DD22.9121.1111
1	Medical Version (M5)	2-pole	2-pole	DD22.1321.1111
2	Medical Version (M5)	2-pole	2-pole	DD22.2321.1111
4	Medical Version (M5)	2-pole	2-pole	DD22.4321.1111
6	Medical Version (M5)	2-pole	2-pole	DD22.6321.1111
10	Medical Version (M5)	2-pole	2-pole	DD22.9321.1111

Packaging unit 20 Pcs

Required Accessory**Description**

Fusedrawer 2
Fusedrawer with and without voltage selector insert