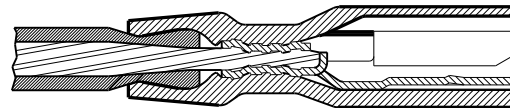
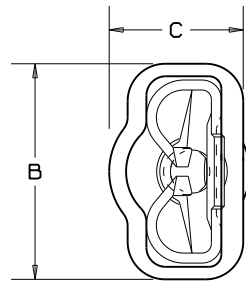
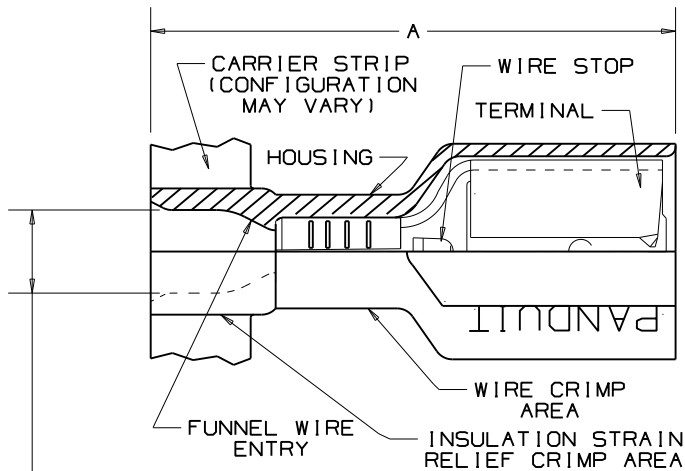


THIS COPY IS PROVIDED ON A RESTRICTED BASIS AND IS NOT TO BE USED IN ANY WAY DETRIMENTAL TO THE INTERESTS OF PANDUIT CORP.



SECTION VIEW OF CRIMPED DISCONNECT

NOTES:

- UL LISTED & CSA CERTIFIED FOR:
  - 600V MAX VOLTAGE RATING
  - 221°F (105°C) MAX TEMP RATING
  - STRANDED AWG COPPER WIRE ONLY
- PACKAGE QTY: 3K=3000 PIECES, 2K=2000 PIECES  
CONTINUOUS MOLDED STRIP CARRIER
- MATERIAL:
  - STAMPING-CDA 260 BRASS, TIN PLATED
  - HOUSING-PREMIUM GRADE NYLON FOR SUPERIOR STRAIN RELIEF INSULATION CRIMPING
- DIMENSIONS IN BRACKETS ARE IN mm OR mm<sup>2</sup>
- NYLON HOUSING IS OPAQUE

MAX. WIRE INSUL DIA. (SEE CHART)

TOOL CHART  
RECOMMENDED PRESSES  
CP-851, CP-860  
CP-861, CP-862

PART NUMBER	TAB SIZE	WIRE RANGE AWG (MM <sup>2</sup> )	COLOR (note 5)	MAX. WIRE INSULATION DIAMETER	MIN. WIRE INSULATION DIAMETER	DIMENSIONS in.			STRIP LENGTH 1/32 (0.8) -0	CA-800 & CA-9 APPLICATOR DIE INSERTS
						A ±.03 (1.8)	B ±.01 (1.3)	C ±.01 (1.3)		
DPF 18205F 1BR-3K	.205/.187 X .032 (5.2/4.8 X 0.8)	22-18 (1.5-1.0)	RED	.106 (2.69)	.060 (1.52)	.78 (19.8)	.31 (7.9)	.22 (5.6)	9/32 (7.1)	CD-800-10 CD9-10A
DPF 18206F 1BR-3K	.205/.187 X .020 (5.2/4.8 X 0.5)	22-18 (1.5-1.0)	RED	.106 (2.69)	.060 (1.52)	.78 (19.8)	.31 (7.9)	.22 (5.6)	"	
DPF 18250F 1BR-3K	.250 X .032 (6.3 X 0.8)	22-18 (1.5-1.0)	RED	.106 (2.69)	.060 (1.52)	.84 (21.3)	.35 (8.9)	.22 (5.6)	"	
DPF 18-250F 1B-3K	.250 X .032 (6.3 X 0.8)	22-18 (1.5-1.0)	RED	.136 (3.45)	.060 (1.52)	.84 (21.3)	.35 (8.9)	.22 (5.6)	"	
DPF 18-205F 1B-3K	.205/.187 X .032 (5.2/4.8 X 0.8)	22-18 (1.5-1.0)	RED	.136 (3.45)	.060 (1.52)	.78 (19.8)	.31 (7.9)	.22 (5.6)	"	
DPF 18-206F 1B-3K	.205/.187 X .020 (5.2/4.8 X 0.5)	22-18 (1.5-1.0)	RED	.136 (3.45)	.060 (1.52)	.78 (19.8)	.31 (7.9)	.22 (5.6)	"	
DPF 18-187F 1B-3K	.187 X .032 (4.8 X 0.8)	22-18 (1.5-1.0)	RED	.136 (3.45)	.060 (1.52)	.78 (19.8)	.29 (7.4)	.16 (4.1)	"	
DPF 18-188F 1B-3K	.187 X .020 (4.8 X .5)	22-18 (1.5-1.0)	RED	.136 (3.45)	.060 (1.52)	.78 (19.8)	.29 (7.4)	.16 (4.1)	"	
DPF 14-250F 1B-3K	.250 X .032 (6.3 X 0.8)	16-14 (1.5-2.5)	BLUE	.160 (4.06)	.090 (2.29)	.84 (21.3)	.35 (8.9)	.22 (5.6)	"	CD-800-11 CD9-11A
DPF 14-205F 1B-3K	.205/.187 X .032 (5.2/4.8 X 0.8)	16-14 (1.5-2.5)	BLUE	.160 (4.06)	.090 (2.29)	.78 (19.8)	.31 (7.9)	.22 (5.6)	"	
DPF 14-206F 1B-3K	.205/.187 X .020 (5.2/4.8 X 0.5)	16-14 (1.5-2.5)	BLUE	.160 (4.06)	.090 (2.29)	.78 (19.8)	.31 (7.9)	.22 (5.6)	"	
DPF 14-187F 1B-3K	.187 X .032 (4.8 X 0.8)	16-14 (1.5-2.5)	BLUE	.160 (4.06)	.090 (2.29)	.78 (19.8)	.29 (7.4)	.18 (4.6)	"	
DPF 14-188F 1B-3K	.187 X .020 (4.8 X .5)	16-14 (1.5-2.5)	BLUE	.160 (4.06)	.090 (2.29)	.78 (19.8)	.29 (7.4)	.18 (4.6)	"	
DPF 10-250F 1B-2K	.250 X .032 (6.3 X 0.8)	12-10* (4.0-6.0)	YELLOW	.220 (5.59)	.110 (2.79)	.96 (24.4)	.35 (8.9)	.23 (5.8)	3/8 (9.5)	

SA CERTIFIED LR31212

UL LISTED 20H3 E78522

Panduit part numbers shown on this drawing meet the material requirements of RoHS (EUROPEAN DIRECTIVES 2002/95/EC) as proposed by the Technical Adaptation Committee.

\* ALSO APPROVED FOR USE WITH (2) #16 (1.5) WIRES

A41409\_09

**PANDUIT**

CORP.

TINLEY PARK, ILLINOIS

REELSMART™ DISCOGRIP™

FULLY INSULATED FEMALE DISCONNECTS

.250 X .032, .205 X .032/.020, .187 X .032/.020

REV	DATE	BY	CHK	DESCRIPTION	ECN#	CUST	PM
09	02-08	SRB		Added Part numbers DPF18205F1BR-3K, DPF18206F1BR-3K, DPF18250F1BR-3K			

DRAWN BY KRC

CHK'D LA

SCALE NONE

DRAWING NO./CAD FILENAME A41409