

# ECS-CR-2 B Series SMD CERAMIC RESONATOR



The ECS CR-2-B Chip Type SMD ceramic resonator includes built in capacitors for simplification of oscillator circuits and reduces component count. The SMD ceramic resonator is an excellent low cost frequency control solution when absolute frequency accuracy is not important.

## FEATURES

- Chip Type SMD package
- Wide Frequency range
- Tape & Reel Packaging
- RoHS compliant (Note 7 exemption)

## PART NUMBERING GUIDE "EXAMPLE"

Manufacturer	Package Type	Frequency	Version	Tape and Reel Packaging		
ECS	-	CR2	10.00	B	-	TR

Sample Part Number: ECS-CR2-10.00-B-TR

## OPERATING CONDITIONS/ELECTRICAL CHARACTERISTICS

PART NUMBER *	FREQUENCY RANGE (MHz)	FREQUENCY ACCURACY @ +25°C (%)	FREQUENCY STABILITY -20 ~ +80°C (%)	AGING FOR TEN YEARS (%)	RESONANT RESISTANCE (Ω) MAX.	INSULATION RESISTANCE @ 10 VDC
ECS-CR2-[ ].[ ]-[ ]-B	10.00 ~ 40.00	± 0.5	± 0.3	± 0.3	40	100 M Ω Min.

\* Complete part number to include frequency i.e. ECS-CR2-10.00-B-TR

## PACKAGE DIMENSIONS (mm)

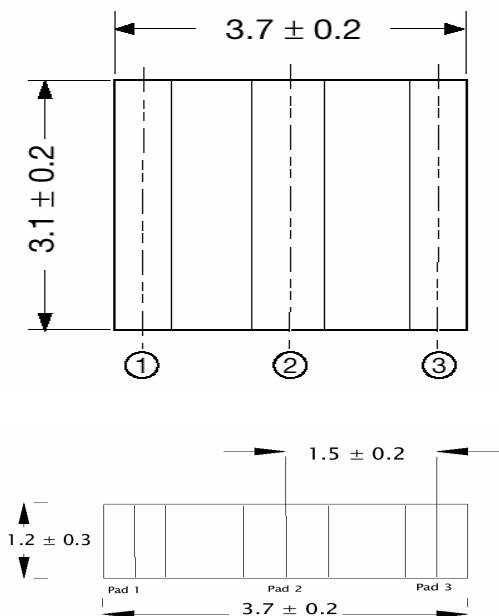


Figure 1) CR2 Top & Side View

Pad Connections	
1	In/Out
2	GROUND
3	Out/In

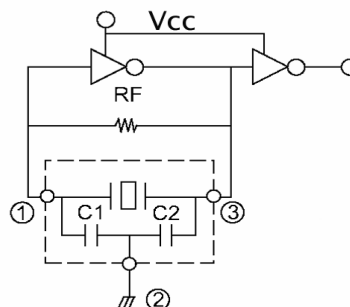


Figure 2) Test Circuit (74HCU04P)

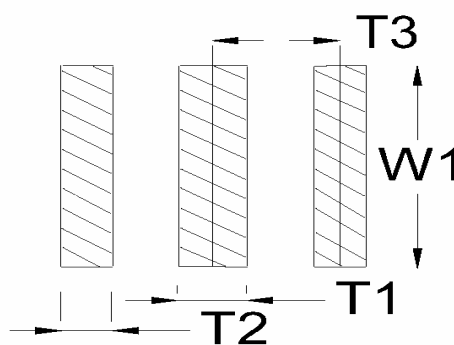


Figure 3) Land Pattern

Dimensions	CR2
T1	0.7±0.2
T2	1.0±0.2
T3	1.5±0.2
W1	4.1±0.2