



E-Series Surface Mount Mixer 1 - 1000 MHz

ESMD-C1

Features

- LO Power +7 dBm
- Up to +1 dBm RF
- Surface Mount

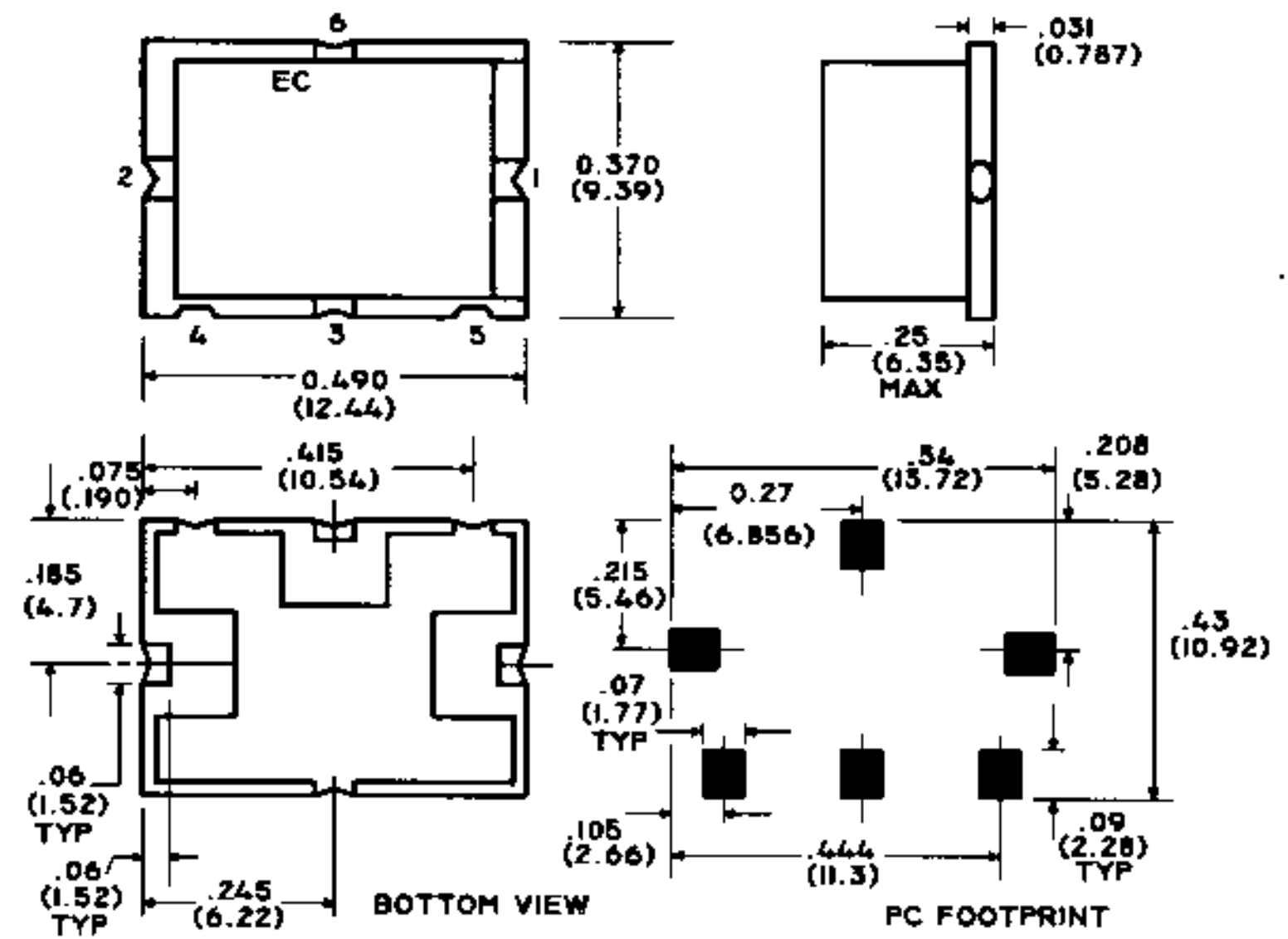
Specifications @ 25°C

Frequency Range	
RF	1 - 1000 MHz
LO	1 - 1000 MHz
IF	DC - 1000 MHz

Conversion Loss (dB)	Typical	
2 - 500 MHz	6.5	7.5
1 - 1000 MHz	7.5	9.5

Isolation (dB)	Typical	Minimum
LO to RF		
1 - 10 MHz	60	45
10 - 500 MHz	45	30
500 - 1000 MHz	40	25
LO to IF		
1 - 10 MHz	60	40
	35	23

SM-2



Operating Characteristics

Impedance	50 Ohms Nominal
RF input for 1dB Compression	+ 1 dBm

Absolute Maximum Ratings

Parameter	Absolute Maximum
RF Power	50 mW
Peak IF Current	40 mA
Storage Temperature	-55°C to 100°C
Operating Temperature	-55°C to 100°C
Pin Temperature (10 Seconds)	260°C

Function	Pin No.
LO	2
RF	1
IF	3
Ground	4,5,6
Case Ground	-
Unconnected	-

Specifications Subject to Change Without Notice

S 0329 D

AMP M/A-COM Eurotec * Loughmahon Technology Park * Blackrock * Cork * Ireland * Tel: 353-21-808300 * Fax: 353-21-359935c