

FIGURE 1

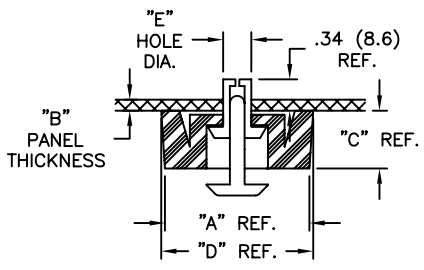


FIGURE 2

- NOTES:  
 1. MAT'L: DRIVE SCREW (FIG 1)  
 RIVET: ACETAL (RMS-14)  
 PUSH RIVET (FIG 2)  
 RIVET: NYLON 6 (RMS-52)  
 2. COLOR: BLACK

PART NO.	FOOT MAT'L	"A" REF.	"B" THKS. RANGE	"C" REF.	"D" REF.	"E" HOLE DIAMETER	FIGURE
FF-001B	RMS-76	.79 (20)	.039-.091 (1.0-2.3)	.55 (14)	.95 (24)	.197-.201(5.0-5.1)	1
FF-004B		.71 (18)					
FF-003-P3x5.5B	RMS-42	.79 (20)	.031-.071 (0.8-1.8)	.17 (4.2)	.83 (21)	.161-.165 (4.1-4.2)	2
FF-005-P4x5B			.071-.111 (1.8-2.8)				
FF-005-P4x6B		.114-.146 (2.9-3.7)					
FF-005-P4x7B		.150-.189 (3.8-4.8)					
FF-005-P4x8B		.024-.039 (0.6-1.0)					
FF-006-P4x6B		.039-.079 (1.0-2.0)					
FF-006-P4x7B		.079-.118 (2.0-3.1)					
FF-006-P4x8B		.031-.047 (0.8-1.2)					
FF-006-P5x6.5B		.075-.110 (1.9-2.8)					
FF-008-P4x7B		.114-.157 (2.9-4.0)					
FF-008-P4x8B	.79 (20)	.55 (14)	0-.031 (0-0.8)	.24 (6)	.83 (21)	.161-.165 (4.1-4.2)	
FF-009-P4x6B			.031-.079 (0.8-2.0)				
FF-009-P4x7B			.083-.118 (2.1-3.0)				
FF-009-P4x8B	RMS-76	.55 (14)	.024-.039 (0.6-1.0)	.31 (8)	.59 (15)	.161-.165 (4.1-4.2)	
FF-010-P4x6B			.039-.079 (1.0-2.0)				
FF-010-P4x7B			.079-.118 (2.0-3.1)				
FF-010-P4x8B			.032-.047 (.8-1.2)				
FF-010-P5x6.5B			.047-.087 (1.2-2.2)				
FF-010-P5x7.5B	.39 (10)	.55 (14)	.020-.047 (.5-1.2)	.16 (4)	.43 (10.8)	.142-.146 (3.6-3.7)	
FF-013-P3.5x4.5B			.047-.079 (1.2-2.0)				
FF-013-P3.5x5.5B			.059-.087 (1.5-2.2)				
FF-013-P3.5x6.0B			.098-.126 (2.5-3.2)				
FF-013-P3.5x7.0B			.138-.165 (3.5-4.2)				
FF-013-P3.5x8.0B							

F	SEE ECN #471 FOR CHANGE DETAILS	SM 09.24.02
E	RMS-42 WAS RMS-76, RMS-52 WAS RMS-28	RG 12.17.01
D	CHANGED FILE NUMBER	SM 05.18.01
C	CORRECTED "B" DIM.	AM 5/6/99
B	ADDED "B" AT THE OF PART #'S	4/30/99
A	PART NO. FF-010, FF-013 ADDED	7.27.98
REV	DESCRIPTION	ENGR DATE

TITLE: FAST FEET		DWG IN IN (MM)	FINAL
TOLERANCES UNLESS NOTED .XX=±.010 .XXX=±.005 FRAC=±1/64 ANG=±1'	FILE # FF	DWN: P.B.	APP:
	MAT'L: SEE NOTES	DT: 04-29-94	DT:
	RE: RICHCO, INC.	RICHCO INC. PO BOX 804238, CHICAGO, 60680 (773) 539-4060	
		PART #	PRINT TYPE
		SEE TABLE	CA