

[查询IRFK6H150供应商](#)

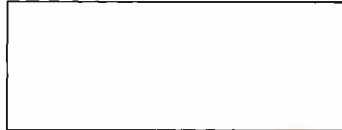
[捷多邦, 专业PCB打样工厂](#)  
[, 24小时加急出货](#)

Bulletin E27110

# International Rectifier IRFK6H150, IRFK6J150

## Isolated Base Power HEX-pak™ Assembly - Parallel Chip Configuration

- High Current Capability.
- UL recognised E78996.
- Electrically Isolated Base Plate.
- Easy Assembly into Equipment.



### Description

The HEX-pak™ utilises the well-proven HEXFET™ die, combining low on-state resistance with high transconductance. These superior technology die are assembled by state of the art techniques into the TO-240 package, featuring 2.5kV rms isolation and solid M5 screw connections. The small footprint means the package is highly suited to power applications where space is a premium. Available in two versions, IRFK.H... for fast switching and IRFK.J... for oscillation sensitive applications.

$V_{DS} = 100V$
$R_{DS(on)} = 10m\Omega$
$I_D = 150A$

### Absolute Maximum Rating

	Parameter	Max.	Units
$I_D @ T_C=25^\circ C$	Continuous Drain Current	150	A
$I_D @ T_C=100^\circ C$	Continuous Drain Current	120	A
$I_{DM}$	Pulse Drain Current	720	A ①
$P_D @ T_C=25^\circ C$	Maximum Power Dissipation	625	W
$V_{GS}$	Gate-to-Source Voltage	20	V
$V_{INS}$	R.M.S. Isolation Voltage, circuit to base	2.5	kV
$T_J$	Operating Junction Temperature Range	-40 to 150	°C
$T_{STG}$	Storage Temperature Range	-40 to 150	°C

### Thermal and Mechanical Specifications

	Parameter	Min.	Typ.	Max.	Units
$R_{thJC}$	Junction-to-Case	-	-	0.20	K/W ②
$R_{thCS}$	Case-to-Sink, smooth & greased surface	-	0.1	-	K/W
T	Mounting Torque +10%				③
	HEXpak to Heatsink	-	5	-	Nm
	Busbar to HEXpak	-	3	-	Nm
wt	Approximate Weight	-	140	-	g
		-	5	-	oz

#### Notes:

- ① - Repetitive Rating; Pulse width limited by maximum junction temperature see figure 8.
- ② - Per Module.
- ③ - A mounting compound is recommended and the torque should be rechecked after a period of three hours to allow for the spread of the compound.



# IRFK6H150, IRFK6F150



## Electrical Characteristics @ $T_j = 25^\circ\text{C}$ (Unless otherwise specified)

	Parameter	Min.	Typ.	Max.	Units	Test Conditions
$B_{VDSS}$	Drain-to-Source Breakdown voltage	100	-	-	V	$V_{GS}=0\text{V}$ , $I_D=1.0\text{mA}$
$R_{DS(on)}$	Static Drain-to-Source On-State Resistance	-	8	10	m $\Omega$	$V_{GS}=10\text{V}$ , $I_D=120\text{A}$
$I_{D(on)}$	On-State Drain Current	150	-	-	A	$V_{DS} > I_{D(on)} \times R_{DS(on)}$ max, $V_{GS}=10\text{V}$
$V_{GS(th)}$	Gate Threshold Voltage	2.0	-	4.0	V	$V_{DS}=V_{GS}$ , $I_D=1.5\text{mA}$
$g_{fs}$	Forward Transconductance ④	75	120	-	S	$V_{DS} > 50\text{V}$ , $I_D=120\text{A}$
$I_{DSS}$	Zero Gate Voltage Drain Current	-	-	1.5	mA	$V_{DS}=V_{GS}$ max, $V_{GS}=0\text{V}$
		-	-	6.0	mA	$V_{GS}=10\text{V}$ , $T_C=125^\circ\text{C}$ , $V_{DS}=V_{DS}$ max x 0.8
$I_{GSS}$	Gate-to-Source Leakage Forward	-	-	600	nA	$V_{GS}=20\text{V}$
$I_{GSS}$	Gate-to-Source Leakage Reverse	-	-	-600	nA	$V_{GS}=-20\text{V}$
$Q_g$	Total Gate Charge	-	530	750	nC	$I_D=150\text{A}$ , $V_{GS}=10\text{V}$ ,
$Q_{gs}$	Gate-to-Source Charge	-	100	150	nC	$V_{DS}=V_{DS}$ max x 0.8
$Q_{gd}$	Gate-to-Drain ("Miller") Charge	-	250	350	nC	
$t_{d(on)}$	Turn-on Delay Time	IRFK6H150	105	-	ns	$V_{DD}=40\text{V}$ , $I_D=120\text{A}$ ,
		IRFK6J150	120	-	ns	
$t_r$	Rise Time	IRFK6H150	460	-	ns	$V_{GS}=10\text{V}$ ,
		IRFK6J150	570	-	ns	
$t_{d(off)}$	Turn-off Delay Time	IRFK6H150	300	-	ns	$R_{SOURCE}=3.3\Omega$
		IRFK6J150	400	-	ns	
$t_f$	Fall Time	IRFK6H150	150	-	ns	
		IRFK6J150	240	-	ns	
$L_{DS}$	Drain-to-Source Inductance	-	18	-	nH	
$C_{iss}$	Input Capacitance	-	11.0	-	nF	$V_{GS}=0\text{V}$ , $V_{DS}=25\text{V}$ ,
$C_{oss}$	Output Capacitance	-	6.0	-	nF	$f=1.0\text{MHz}$
$C_{riss}$	Reverse Transfer Capacitance	-	5.0	-	nF	
	Linear Derating Factor	-	-	5	W/K	

## Source-Drain Diode Ratings and Characteristics

	Parameter	Min.	Typ.	Max.	Units	Test Conditions
$I_S$	Continuous Source Current (Body Diode)	-	-	150	A	
$I_{SM}$	Pulsed Source Current (Body Diode)	-	-	665	A	
$V_{SD}$	Diode Forward Voltage	-	-	2.5	V	$V_{GS}=0\text{V}$ , $I_S=150\text{A}$ , $T_C=25^\circ\text{C}$
$t_{rr}$	Reverse Recovery Time	90	190	390	ns	$di/dt=400\text{A}/\mu\text{s}$ , $T_j=150^\circ\text{C}$
$Q_{rr}$	Reverse Recovered Charge	4.5	10.0	20.0	$\mu\text{C}$	$I_S=150\text{A}$

### Notes:

④ - Pulse Width  $\leq 300\mu\text{s}$ ; Duty cycle  $\leq 2\%$ .



# IRFK6H150, IRFK6F150

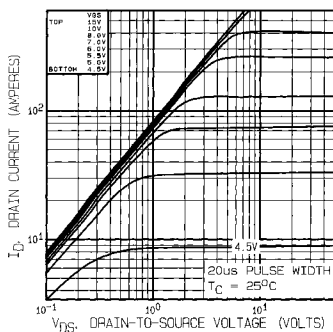


Fig 1. Typical Output Characteristics,  $T_C = 25^\circ\text{C}$

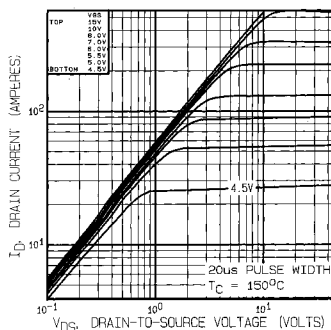


Fig 2. Typical Output Characteristics,  $T_C = 150^\circ\text{C}$

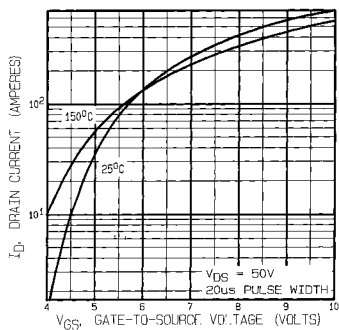


Fig 3. Typical Transfer Characteristics

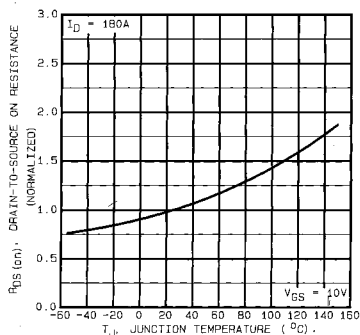
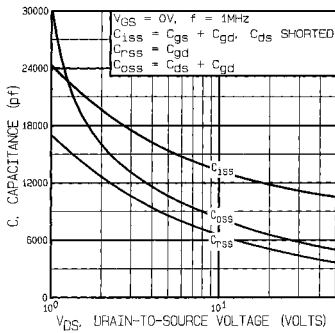
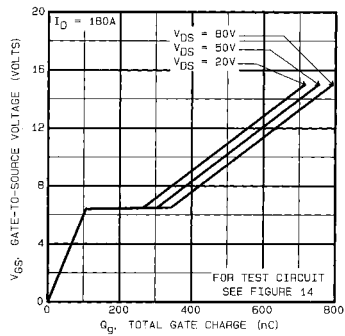


Fig 4. Normalized On-Resistance Vs. Temperature

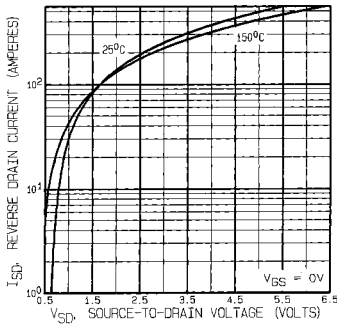
# IRFK6H150, IRFK6F150



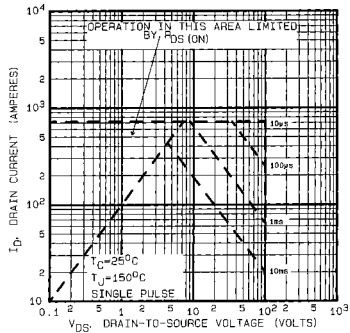
**Fig 5. Typical Capacitance Vs. Drain-to-Source Voltage**



**Fig 6. Typical Gate Charge Vs. Gate-to-Source Voltage**



**Fig 7. Typical Source-Drain Diode Forward Voltage**



**Fig 8. Maximum Safe Operating Area**



# IRFK6H150, IRFK6F150

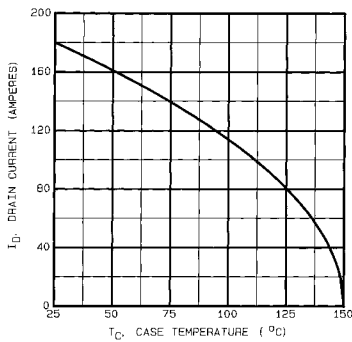


Fig 9. Maximum Drain Current Vs. Case Temperature

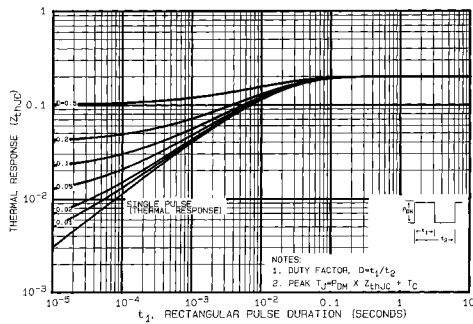


Fig 10. Maximum Effective Transient Thermal Impedance, Junction-to-Case

# IRFK6H150, IRFK6F150

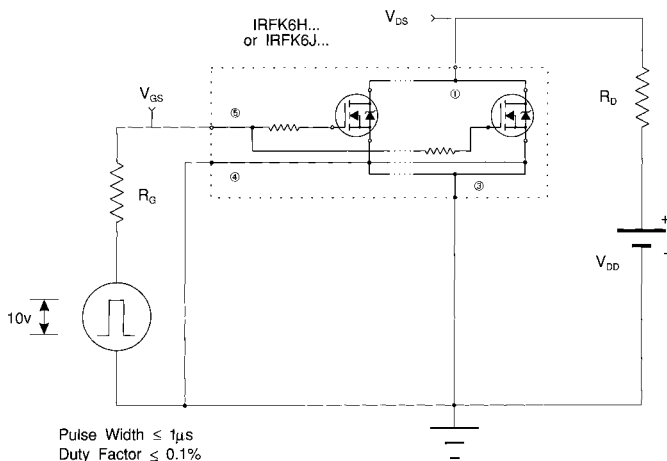


Fig 11a. Switching Time Test Circuit

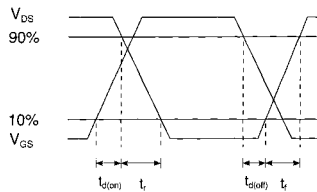
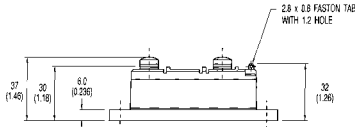
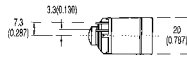
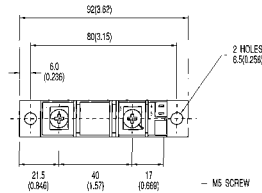
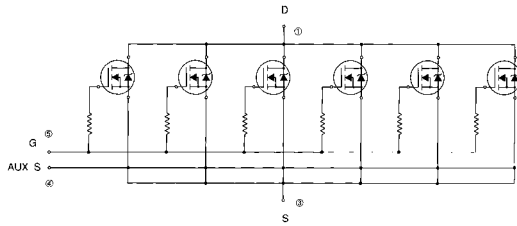


Fig 11b. Switching Time Waveforms



# IRFK6H150, IRFK6F150

## Circuit Configuration and Outline



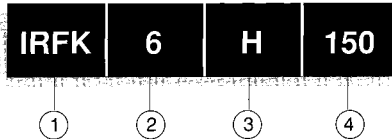
NOTE:  
DEVICE IS SUPPLIED WITH  
AUXILIARY LEADS 200(7.87) LONG

All dimensions in millimetres (inches)

# IRFK6H150,IRFK6F150



## Part Numbering



1. - HEX-pak Module.
2. - Number of HEXFETs in parallel.
3. - H - Fast switching.  
- J - Oscillation resistant for sensitive applications.
4. - Voltage code:-
  - 054 - 60V
  - 150 - 100V
  - 250 - 200V
  - 350 - 400V
  - 450 - 500V
  - C50 - 600V

**WORLD HEADQUARTERS:** 233 Kansas St. **EL SEGUNDO**, California 90245, USA. Tel:(213) 772-2000. Tlx:664464. Fax:(213) 772-9029  
**EUROPEAN HEADQUARTERS:** Hurst Green, **OXTED**, Surrey RH8 9BB, UK. Tel:(0883) 713215. Tlx:95219. Fax:(0883)714234.

**CANADA:** 101 Bentley St., Markham, **ONTARIO L3R 9L1**. Tel:(416)475-1897. Tlx:06-966-650. Fax:(416)475-8801  
**CZECHOSLOVAKIA:** Masurova 19/1505, Box 30, 148 00 **PRAGUE**. Tel:(2) 792 6631. Fax:(2) 792 6631.  
**DENMARK:** P.O. Box 70, Kroghøjvej 51, DK-2880 **BAGSVAERD**. Tel:(45) 44 37 71 60. Fax:(45) 44 37 71 52  
**FRANCE:** 123 Rue de Petit Vaux, 91360 **EPINAY sur ORGE**. Tel:(1)94.54.83.29. Tlx:600943. Fax:(1)64.54.83.30.  
**FINLAND:** Billskogsvägen 19, 02580 Sijunää St. Tel:(0) 262 8144. Fax:(0) 262 8150.  
**GERMANY:** Saaburgstr. 157, D-6380 **BAD HOMBURG**. Tel:(61)72 37066. Tlx:410404. Fax:(61)72 37065.  
**HUNGARY:** Széni Istvan Park 15, H-1137 **BUDAPEST**. Tel:(1) 1298 822. Fax:(1) 1298 822.  
**HONG KONG:** 202 Peter Building, 60 Queens Road Central, **HONG KONG**. Tel:(85) 252 98355. Fax:(85) 284 52608.  
**ITALY:** Via Liguria 49, 10071 Borgaro, **TORINO**. Tel:(011)470 14 84. Tlx:221257. Fax:(011)470 42 90.  
Via Zucca 9, 20017 Pno **MILANO**. Tel:(02)93 50 36 50. Fax:(02)93 50 36 55.  
Via Arno 1, 40139 **BOLIGNA**. Tel:(051)49 53 07. Fax:(051)49 54 80.  
**JAPAN:** 31 Greenacre, S Union Park, Khar (W), **SONBAY** 400 050. Tel:(02)3355026/533779/5400242. Tlx:011-71481.  
K & H Bldg. 2F, 3-30-4 Nishi-Ikebukuro, Toshima-ku, **TOKYO**, Japan 171. Tel:(03)983 0641. Fax:(03)983 0642.  
**SINGAPORE:** HEX 10-01 Fortune Centre, 190 Middle Road, **SINGAPORE 0718**. Tel:(65)536 3922/337 4695/336 6286. Fax:(65)337 4692.  
**SWEDEN:** Box 86, S-162 12 Vallbyväg 1, **STOCKHOLM**. Tel:(08)870035. Fax:(08)874242.  
**SWITZERLAND:** CH-8032 **ZURICH**, Kirchenweg 5. Tel:(01)368 8700/6686. Fax:(01)393 5108/2379.  
**U.S.A.:**  
Central Zone: 2401 Plum Grove Road, Suite 111, **PALATINE**, IL 60067. Tel:(312)397-0002. Fax:(312)397-0114.  
Eastern Zone: 71 Grand Avenue, **PALISADES PARK**, NJ 07650. Tel:(201)943-4554. Fax:(201)943-5754.  
Southern Zone: 800 Office Plaza Blvd., Suite 401, **KISSIMMEE**, FL 32743. Tel:(407)933-2383. Fax:(407)933-2293.  
Western Zone: 222 Kansas Street, **EL SEGUNDO**, CA 90245. Tel:(213)507-6686. Fax:(213)640-6533.

Sales Offices, Agents and Distributors in Major Cities throughout the World.

In the interest of product improvement INTERNATIONAL RECTIFIER reserves the right to change specifications at any time without notice.