

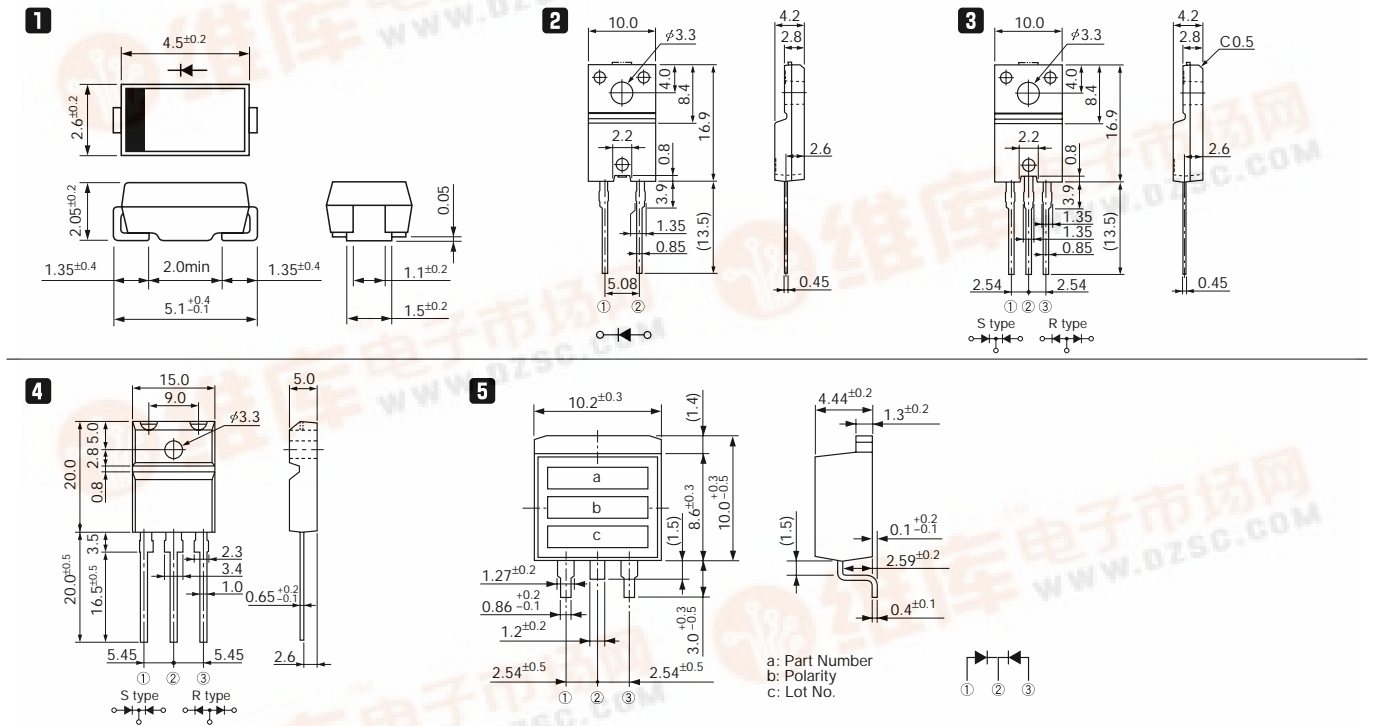
# Ultra-Fast-Recovery Rectifier Diodes 300V

t<sub>rr</sub>①: I<sub>F</sub>/I<sub>R</sub> (=I<sub>F</sub>) 90% Recovery Point  
 (ex. I<sub>F</sub>/I<sub>R</sub> = 100mA/100mA 90% Recovery Point)  
 t<sub>rr</sub>②: I<sub>F</sub>/I<sub>R</sub> (=2 I<sub>F</sub>) 75% Recovery Point  
 (ex. I<sub>F</sub>/I<sub>R</sub> = 100mA/200mA 75% Recovery Point)

V <sub>RM</sub> (V)	Package	Part Number	I <sub>F</sub> (AV) (A)	I <sub>FSM</sub> (A) 50Hz Half-cycle Sinewave Single Shot	T <sub>J</sub> (°C)	T <sub>stg</sub> (°C)	V <sub>F</sub> (V) max	I <sub>F</sub> (A)	I <sub>R</sub> (μA)	I <sub>R</sub> (H) (mA)	t <sub>rr</sub> ① (ns)	I <sub>F</sub> /I <sub>FP</sub> (mA)	t <sub>rr</sub> ② (ns)	I <sub>F</sub> /I <sub>FP</sub> (mA)	R <sub>th(j-l)</sub> R <sub>th(j-c)</sub> (°C/W)	Mass (g)	Fig. No.	Page where characteristic curve is shown
									V <sub>R</sub> =V <sub>RM</sub> max	V <sub>R</sub> =V <sub>RM</sub> max								
300	Surface Mount	SFPX-63	2.0	20	-40 to +150	1.3	2	50	3	150	30	100/100	25	100/200	20	0.07	1	—
	Surface Mount Center-tap	MPX-2103	10.0	65	-40 to +150	1.3	5.0	50	15	150(T <sub>J</sub> )	30	100/100	25	100/200	2.5	1.04	5	81
	Frame-2Pin	FML-G13S	5.0	70	-40 to +150	1.3	5.0	100	0.2	100	50	100/100	35	100/200	4.0	2.1	2	72
	Center-tap	FMG-13S, R	5.0	35	-40 to +150	1.8	2.5	500	1.5	100	100	100/100	50	100/200	4.0	2.1	3	74
		FML-13S	5.0	40	-40 to +150	1.3	2.5	50	0.1	100	50	100/100	35	100/200	4.0	2.1		76
		FMG-23S, R	10.0	65	-40 to +150	1.8	5.0	500	1.5	100	100	100/100	50	100/200	4.0	2.1		75
		FML-23S	10.0	70	-40 to +150	1.3	5.0	100	0.5	100	50	100/100	35	100/200	4.0	2.1		76
		FMX-23S	10.0	65	-40 to +150	1.3	5.0	50	15	150	30	100/100	25	100/200	4.0	2.1	—	
		FMX-2203	20.0	100	-40 to +150	1.3	10.0	100	30	150	30	500/500	25	500/1000	4.0	2.1	81	
		FMG-33S, R	20.0	150	-40 to +150	1.8	10.0	1000	5	100	100	100/100	50	100/200	2.0	5.5	77	
FML-33S		20.0	100	-40 to +150	1.3	10.0	200	1	100	50	500/500	35	500/1000	2.0	5.5	4	78	
FMX-33S	20.0	100	-40 to +150	1.3	10.0	100	30	150	30	500/500	25	500/1000	2.0	5.5	—			

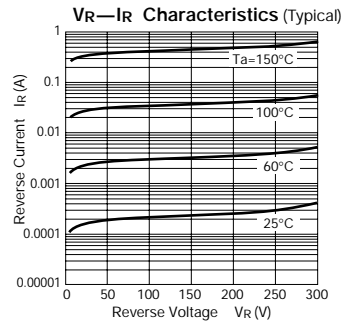
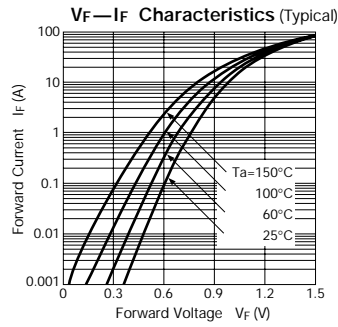
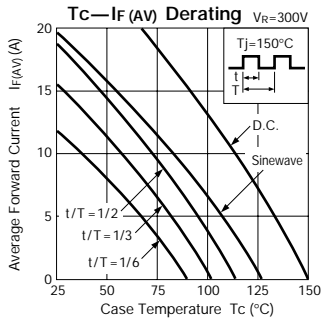
## External Dimensions

Flammability: UL94V-0 or Equivalent (Unit: mm)

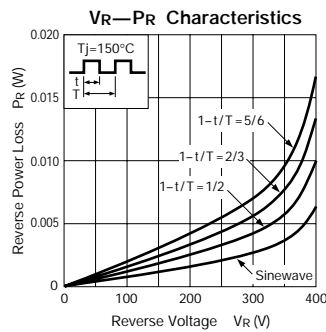
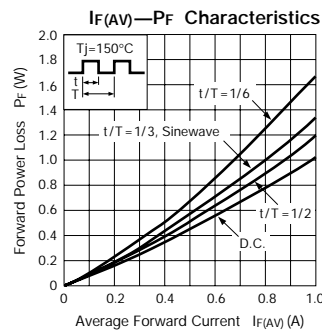
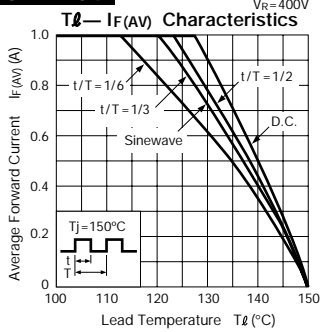


# Characteristic Curves Ultra-Fast-Recovery Rectifier Diodes

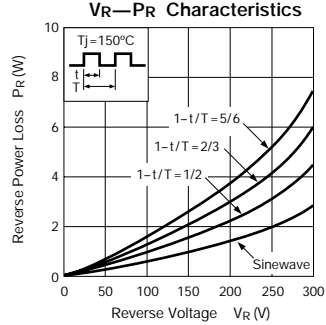
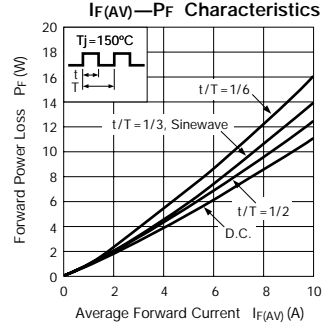
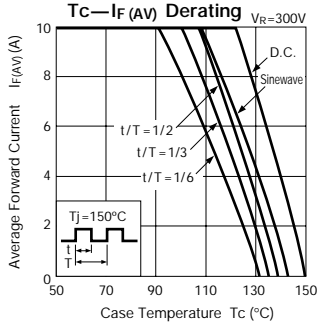
## FMX-2203



## SFPL-64



## MPX-2103



## FMW-2204

