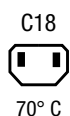


IEC appliance inlet C14 oder C18, screw-on mounting, rear side, PCB-/solder terminal

**Description**

- Panel Mount, Screw-on from rear-side
- Inlet, Pin temperature 70 °C, protection class I or II
- For PCB mounting

**Other versions on request**

- Ground terminal with quick-connect terminal 6,3 x 0,8 mm
- With solder terminals

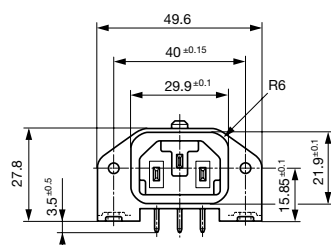
**Weblinks**

[Approvals](#), [RoHS](#), [CHINA-RoHS](#), [e-Store](#), [SCHURTER-Stock-Check](#), [Distributor-Stock-Check](#)

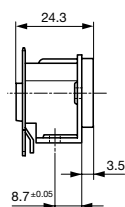
**Technical Data**

|                           |  |
|---------------------------|--|
| Ratings IEC               | 10 A / 250 VAC; Hz 50  |
| Ratings UL/CSA            | 15 A / 250 VAC; 60 Hz  |
| Dielectric Strength       | > 3 kVAC between L-N<br>> 3 kVAC between L/N-PE<br>(1 min/50 Hz)   |
| Allowable Operation Temp. | -25 °C to 70 °C  |
| Degree of Protection      | from front side IP 40 acc. to IEC 60529  |
| Protection Class          | Suitable for appliances with protection class I or II acc. to IEC 61140  |
| Terminal                  | For PCB mounting ; Ground terminal:<br>Quick connect terminals 4.8 x 0.8 mm angled or straight<br>Solder terminal on request |
| Panel Thickness s         | Screw-on: max 3 mm<br>Mounting screw torque max 0.5 Nm   |
| Material: Housing         | Thermoplastic, black, UL 94V-0   |

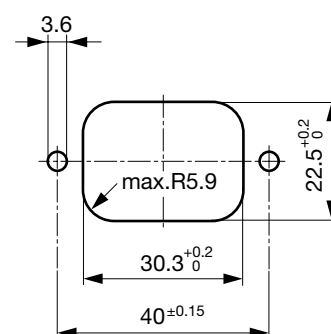
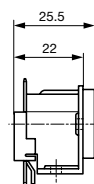
|                          |   |
|--------------------------|---|
| Appliance-Inlet /-Outlet | C14/C18 acc. to IEC/EN 60320-1,<br>UL 498, CSA C22.2 no. 42 (for cold condition) pin-temperature 70 °C, 10 A,<br>Protection class I or II |
|--------------------------|---|

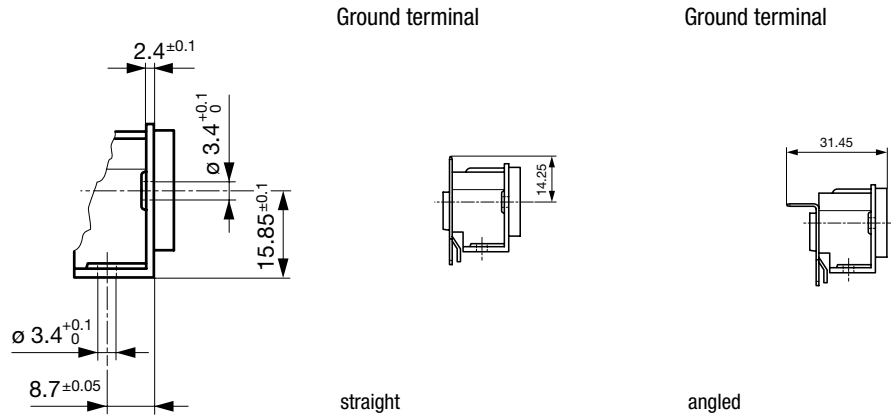
**Dimensions**

without insulation cover



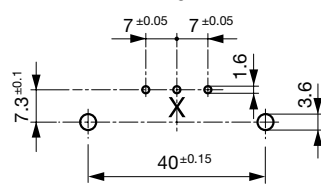
with insulation cover



**Drilling diagrams**

PCB Layout

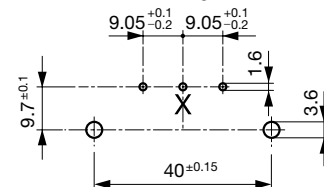
Ground terminal angled



X deleted for protection class II

PCB Layout

Ground terminal straight



X deleted for protection class II

**Variants**[Distributor-Stock-Check](#) | [SCHURTER-Stock-Check](#) | [e-Store](#)

| Protection Class | PCB terminal spacing | Mounting flange with                                 | Ground terminal 4.8 x 0.8 mm | Cover | Order Number |
|------------------|----------------------|--|------------------------------|-------|--------------|
| I                | 7/7.3                | holes for screws M3                                  | angled to pin axis           |       | GSP1.9103.1  |
| I                | 7/7.3                | holes for screws M3                                  | angled to pin axis           | ●     | GSP1.9113.1  |
| I                | 7/7.3                | holes for screws M3                                  | straight                     |       | GSP1.9101.1  |
| I                | 7/7.3                | holes for self-tapping screws 3mm, 4 screws enclosed | angled to pin axis           |       | GSP1.9503.1  |
| I                | 7/7.3                | pre-inserted nuts M3, 4 pcs.                         | angled to pin axis           |       | GSP1.9203.1  |
| I                | 9.05/9.7             | holes for screws M3                                  | angled to pin axis           |       | GSP1.8101.1  |
| I                | 9.05/9.7             | holes for screws M3                                  | straight                     |       | GSP1.8401.1  |
| I                | 9.05/9.7             | holes for screws M3                                  | straight                     | ●     | GSP1.8111.1  |
| I                | 9.05/9.7             | holes for self-tapping screws 3mm, 4 screws enclosed | straight                     |       | GSP1.8501.1  |
| I                | 9.05/9.7             | pre-inserted nuts M3, 4 pcs.                         | straight                     |       | GSP1.8201.1  |
| II               | 7/7.3                | holes for screws M3                                  | angled to pin axis           |       | GSP1.9100.1  |
| II               | 7/7.3                | holes for screws M3                                  | angled to pin axis           | ●     | GSP1.9110.1  |
| II               | 7/7.3                | holes for self-tapping screws 3mm, 4 screws enclosed | angled to pin axis           |       | GSP1.9500.1  |
| II               | 7/7.3                | pre-inserted nuts M3, 4 pcs.                         | angled to pin axis           |       | GSP1.9200.1  |
| II               | 9.05/9.7             | holes for screws M3                                  | straight                     |       | GSP1.8100.1  |
| II               | 9.05/9.7             | holes for screws M3                                  | straight                     | ●     | GSP1.8110.1  |
| II               | 9.05/9.7             | holes for self-tapping screws 3mm, 4 screws enclosed | straight                     |       | GSP1.8500.1  |
| II               | 9.05/9.7             | pre-inserted nuts M3, 4 pcs.                         | straight                     |       | GSP1.8200.1  |

**Packaging unit**

50 Pcs