

# HD14066B

查询HD14066B供应信息

捷多邦, 专业PCB打样工厂, 24小时加急

出货

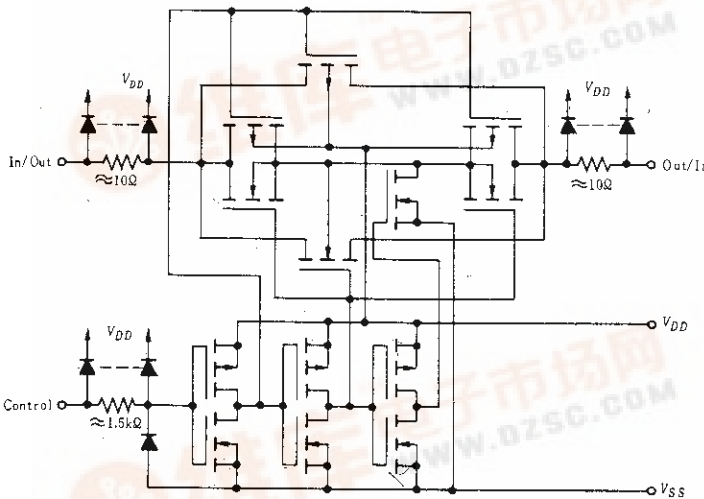
## Quadruple Analog Switch/Quadruple Multiplexer

The HD14066B consists of four independent switches capable of controlling either digital or analog signals. This quad bilateral switch is useful in signal gating, chopper, modulator, demodulator and CMOS logic implementation. The HD14066B is designed to be pin-for-pin compatible with the HD14016B, but has much lower ON resistance. Input voltage swings as large as the full supply voltage can be controlled via each independent control input.

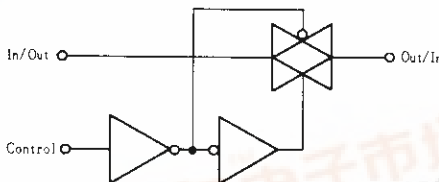
### FEATURES

- High On/Off Output Voltage Ratio = 65dB typ.
- Quiescent Current = 0.5nA/pkg typ. @5V
- Low Crosstalk Between Switches = 50dB typ. @8MHz
- Supply Voltage Range = 3 to 18V
- Linearized Transfer Characteristics,  $\Delta R_{ON} < 60\Omega$  for  $V_{in} = V_{DD}$  to  $V_{SS}$  (at 15V)
- Pin-for-Pin Replacement for CD4016/66B and MC14016/66B

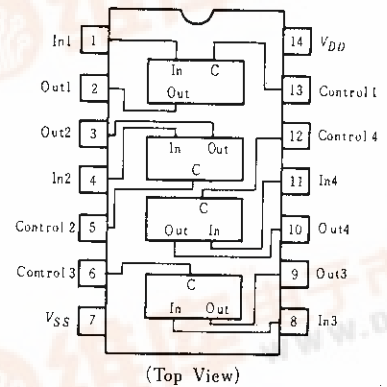
### CIRCUIT SCHEMATIC (1/4)



### LOGIC DIAGRAM (1/4)



### PIN ARRANGEMENT



### TRUTH TABLE

Control	Switch
0	OFF
1	ON

$$V_{SS} \leq V_{in} \leq V_{DD}$$

$$V_{SS} \leq V_{out} \leq V_{DD}$$

Vcontrol	$V_{in}$ to $V_{out}$ Resistance
$V_{SS}$	$> 10^9 \Omega$ typ
$V_{DD}$	$3 \times 10^2 \Omega$ typ

**ELECTRICAL CHARACTERISTICS**

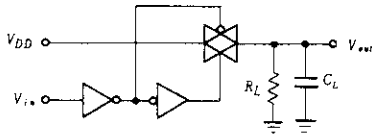
Characteristic	Symbol	$V_{DD}(V)$	Test Conditions	-40°C		25°C			85°C		Unit	
				min	max	min	typ	max	min	max		
Input Voltage	$V_{IL}$	5.0	$R_L=10k\Omega$ $SW$ 入力= $V_{DD}$	$V_O=0.5V$	-	1.5	-	2.25	1.5	-	1.5	V
		10		$V_O=1.0V$	-	3.0	-	4.50	3.0	-	3.0	
		15		$V_O=1.5V$	-	3.75	-	6.75	3.75	-	3.75	
	$V_{IH}$	5.0	$R_L=10k\Omega$ $SW$ 入力= $V_{DD}$	$V_O=1.0V$	3.5	-	3.5	2.75	-	3.5	-	V
		10		$V_O=1.0V$	7.0	-	7.0	5.50	-	7.0	-	
		15		$V_O=1.5V$	11.25	-	11.25	8.25	-	11.25	-	
Input Current	$I_{in}$	15		-	$\pm 0.3$	-	$\pm 0.00001$	$\pm 0.3$	-	$\pm 1.0$	$\mu A$	
Input Capacitance	Control	$C_{in}$	$V_{in}=0$	-	-	-	5.0	-	-	-	pF	
	Switch Input			-	-	-	8.0	-	-	-		
Output Capacitance	$C_{out}$	10		-	-	-	8.0	-	-	-	pF	
Feedthrough Capacitance	$C_{in-out}$	10		-	-	-	0.5	-	-	-	pF	
Quiescent Current	$I_Q$	5.0	Zero Signal, per Package	-	1.0	-	0.0005	1.0	-	7.5	$\mu A$	
		10		-	2.0	-	0.0010	2.0	-	15		
		15		-	4.0	-	0.0015	4.0	-	30		
ON Resistance	$R_{ON}$	5.0		-	880	-	250	1050	-	1200	$\Omega$	
		10		-	450	-	120	500	-	520		
		15		-	250	-	80	280	-	300		
$\Delta$ ON Resistance Between Any Two Channels	$\Delta R_{ON}$	5.0		-	-	-	25	-	-	-	$\Omega$	
		10		-	-	-	10	-	-	-		
		15		-	-	-	5.0	-	-	-		
Input/Output Leakage Current		15		-	$\pm 300$	-	$\pm 0.01$	$\pm 300$	-	$\pm 1000$	nA	

**SWITCHING CHARACTERISTICS ( $C_L=50pF, T_a=25^\circ C$ )**

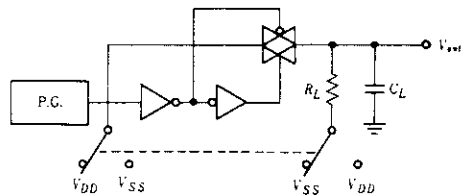
Characteristic	Symbol	$V_{DD}(V)$	Test Conditions	typ	max	Unit
Propagation Delay Time	$t_{PLH}, t_{PHL}$	5.0	$R_L=10k\Omega, V_{SS}=0$	20	45	ns
		10		10	30	
		15		7.0	20	
Output Disable Time	$t_{HZ}$	5.0	$R_L=1k\Omega, V_{SS}=0$	35	100	ns
		10		30	90	
		15		25	75	
	$t_{LZ}$	5.0		30	90	ns
		10		25	75	
		15		20	60	
Output Enable Time	$t_{ZH}$	5.0	$R_L=1k\Omega, V_{SS}=0$	60	180	ns
		10		20	60	
		15		15	45	
	$t_{ZL}$	5.0		60	180	ns
		10		16	50	
		15		14	40	
Sine Wave(Distortion) ( $V_{SS}=-5V$ )		5.0	$V_{in}=1.77V, R_L=10k\Omega, f=1kHz$	0.1	-	%
Bandwidth(Switch ON) ( $V_{SS}=-5V$ )		5.0	$R_L=1k\Omega, 20\log_{10} \frac{V_{out}}{V_{in}} = -3dB$	65	-	MHz
Feedthrough(Switch OFF) ( $V_{SS}=-5V$ )		5.0	$R_L=1k\Omega, 20\log_{10} \frac{V_{out}}{V_{in}} = -50dB$	1.0	-	MHz
Crosstalk(Switch A ON, Switch B OFF) ( $V_{SS}=-5V$ )		5.0	$R_L=1k\Omega, 20\log_{10} \frac{V_{out}(B)}{V_{in}(A)} = -50dB$	8.0	-	MHz
Crosstalk(Control Input-Signal Output) ( $V_{SS}=-5V$ )		5.0		50	-	mV
Maximum Control Frequency		5.0	$V_{SS}=0,$ $20\log_{10} \frac{V_{out}}{V_{in}} = -6dB$	6.0	-	MHz
		10		8.0	-	
		15		8.5	-	

■ DC CHARACTERISTIC TEST CIRCUIT

1. Input Voltage

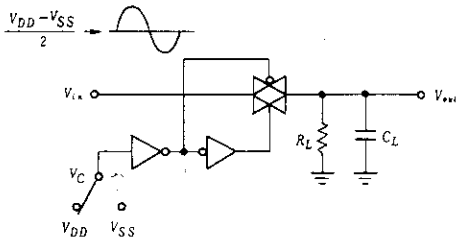


2. Propagation Delay Time

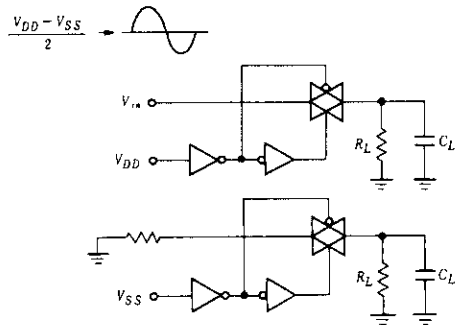


3. Bandwidth, Feedthrough

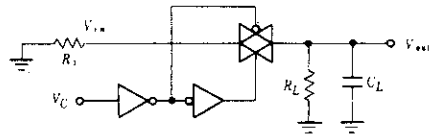
$V_C = V_{DD}$  for Bandwidth Test  
 $V_C = V_{SS}$  for Feedthrough Test



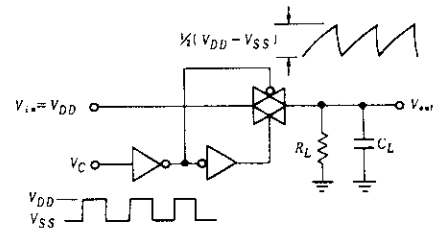
4. Crosstalk



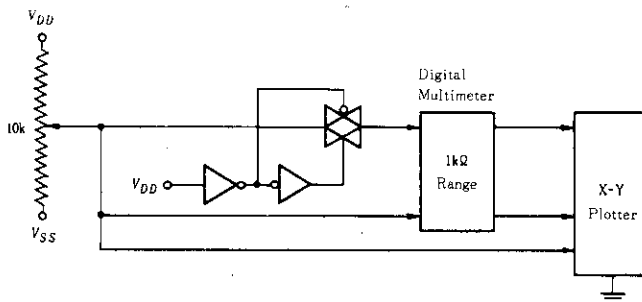
5. Crosstalk



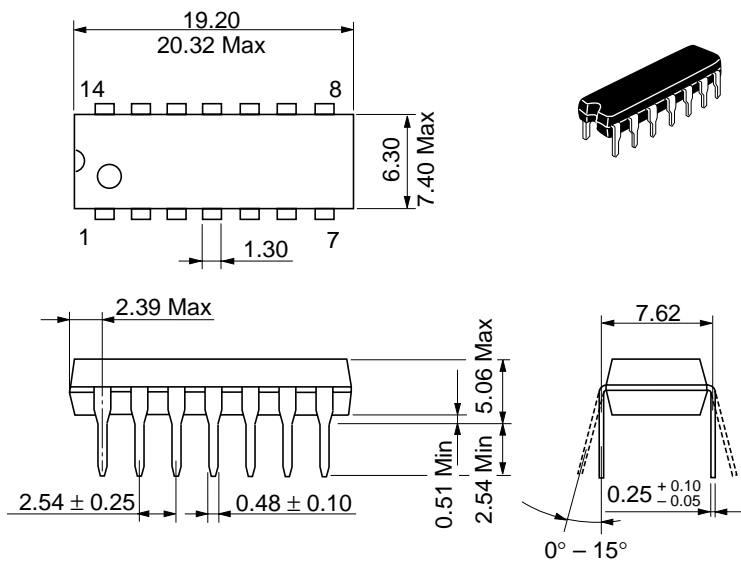
6. Maximum Control Frequency



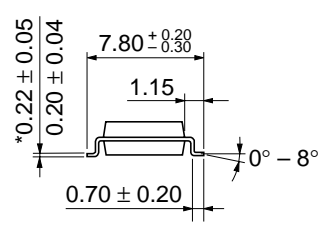
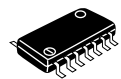
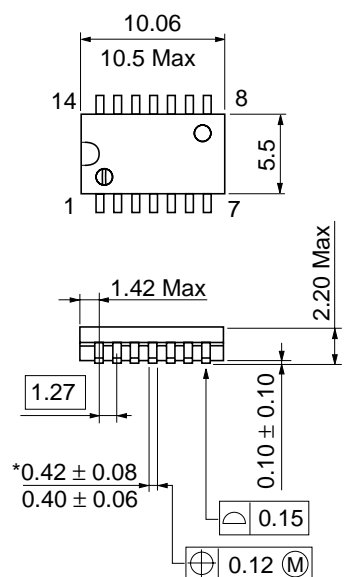
7. ON Resistance



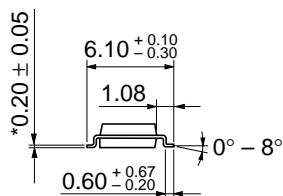
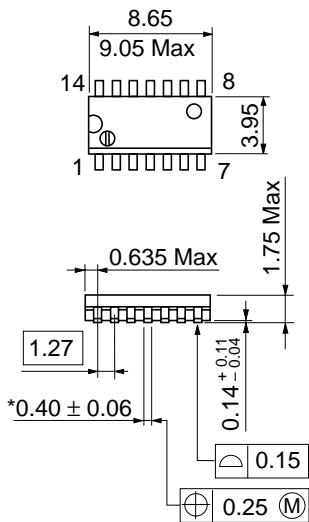
Unit: mm



Unit: mm



Unit: mm



---

---

## Cautions

1. Hitachi neither warrants nor grants licenses of any rights of Hitachi's or any third party's patent, copyright, trademark, or other intellectual property rights for information contained in this document. Hitachi bears no responsibility for problems that may arise with third party's rights, including intellectual property rights, in connection with use of the information contained in this document.
2. Products and product specifications may be subject to change without notice. Confirm that you have received the latest product standards or specifications before final design, purchase or use.
3. Hitachi makes every attempt to ensure that its products are of high quality and reliability. However, contact Hitachi's sales office before using the product in an application that demands especially high quality and reliability or where its failure or malfunction may directly threaten human life or cause risk of bodily injury, such as aerospace, aeronautics, nuclear power, combustion control, transportation, traffic, safety equipment or medical equipment for life support.
4. Design your application so that the product is used within the ranges guaranteed by Hitachi particularly for maximum rating, operating supply voltage range, heat radiation characteristics, installation conditions and other characteristics. Hitachi bears no responsibility for failure or damage when used beyond the guaranteed ranges. Even within the guaranteed ranges, consider normally foreseeable failure rates or failure modes in semiconductor devices and employ systemic measures such as fail-safes, so that the equipment incorporating Hitachi product does not cause bodily injury, fire or other consequential damage due to operation of the Hitachi product.
5. This product is not designed to be radiation resistant.
6. No one is permitted to reproduce or duplicate, in any form, the whole or part of this document without written approval from Hitachi.
7. Contact Hitachi's sales office for any questions regarding this document or Hitachi semiconductor products.

---

---

# HITACHI

## Hitachi, Ltd.

Semiconductor & Integrated Circuits.  
Nippon Bldg., 2-6-2, Ohte-machi, Chiyoda-ku, Tokyo 100-0004, Japan  
Tel: Tokyo (03) 3270-2111 Fax: (03) 3270-5109

URL      NorthAmerica      : <http://semiconductor.hitachi.com/>  
             Europe                 : <http://www.hitachi-eu.com/hel/ecg>  
             Asia (Singapore)        : <http://www.has.hitachi.com.sg/grp3/sicd/index.htm>  
             Asia (Taiwan)             : [http://www.hitachi.com.tw/E/Product/SICD\\_Frame.htm](http://www.hitachi.com.tw/E/Product/SICD_Frame.htm)  
             Asia (HongKong)         : <http://www.hitachi.com.hk/eng/bo/grp3/index.htm>  
             Japan                        : <http://www.hitachi.co.jp/Sicd/indx.htm>

### For further information write to:

Hitachi Semiconductor  
(America) Inc.  
179 East Tasman Drive,  
San Jose, CA 95134  
Tel: <1> (408) 433-1990  
Fax: <1> (408) 433-0223

Hitachi Europe GmbH  
Electronic components Group  
Dornacher StraÙe 3  
D-85622 Feldkirchen, Munich  
Germany  
Tel: <49> (89) 9 9180-0  
Fax: <49> (89) 9 29 30 00

Hitachi Europe Ltd.  
Electronic Components Group.  
Whitebrook Park  
Lower Cookham Road  
Maidenhead  
Berkshire SL6 8YA, United Kingdom  
Tel: <44> (1628) 585000  
Fax: <44> (1628) 778322

Hitachi Asia Pte. Ltd.  
16 Collyer Quay #20-00  
Hitachi Tower  
Singapore 049318  
Tel: 535-2100  
Fax: 535-1533

Hitachi Asia Ltd.  
Taipei Branch Office  
3F, Hung Kuo Building, No.167,  
Tun-Hwa North Road, Taipei (105)  
Tel: <886> (2) 2718-3666  
Fax: <886> (2) 2718-8180

Hitachi Asia (Hong Kong) Ltd.  
Group III (Electronic Components)  
7/F., North Tower, World Finance Centre,  
Harbour City, Canton Road, Tsim Sha Tsui  
Kowloon, Hong Kong  
Tel: <852> (2) 735 9218  
Fax: <852> (2) 730 0281  
Telex: 40815 HITEC HX