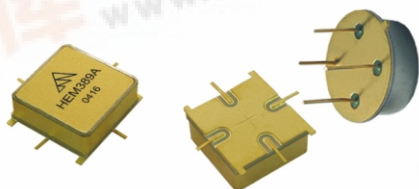




BOWEI INTEGRATED CIRCUITS CO.,LTD.

HE389A/HEM389A High Dynamic Range Amplifier



Features

- Frequency Range: 20~250MHz
- High Gain: 30dB(Typical)
- Low Noise :2.0dB(Typical)
- High Efficiency: 20dBm /45mA(Typical)
- Standard Hermetic Package
- Operating Temperature Range: -55°C ~ +85°C

Specifications (50 Ω, V_{CC} = +15V, T_A = -55°C ~ +85°C)

Parameter	Symbol	Unit	Guaranteed	Typical
Frequency Range	f _L ~f _H	MHz	20~250	--
Gain	G _p	dB	≥29.0	30.0
Gain Flatness	ΔG _p	dB	≤±0.5	--
Noise Figure	F _n	dB	≤2.5 Δ	2.0
Input VSWR	VSWR _i	--	≤2.0:1 Δ	--
Output VSWR	VSWR _o	--	≤2.0:1 Δ	--
Output Power @ 1dB Compression	P-1	dBm	≥20.0 *	21.0
DC Current	I _{CC}	mA	--	45

1) "*"f = 100MHz;

2) The G_p and P-1 will be reduced 0.4dB and 2.8dB respectively under operating at 12VDC (I_{CC}=35mA Typ)

Maximum Rating

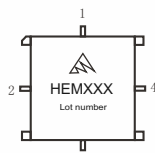
DC Voltage : +17VDC

RF Input: +7dBm

Storage Temp: +125°C



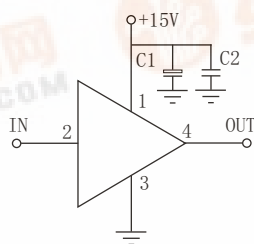
TO-8C



SMO-8C

Application Notes

1. Typical application shown as right, C₁=3.3~22 μF ; C₂=3300~6800pF;
2. Interchanged directly with A86-1 and A81 from W-J Company;
3. See assembly section for mounting information
4. Connectorized package(SMA-1)available



Typical Curves

