



**Features**

- Operating voltage: 2.7V~5.5V
- Low power consumption
  - Operation: 25mA Max. (V<sub>CC</sub>=5V)  
10mA Max. (V<sub>CC</sub>=3V)
  - Standby: 30µA Max. (V<sub>CC</sub>=5V)  
10µA Max. (V<sub>CC</sub>=3V)
- Access time: 150ns Max. (V<sub>CC</sub>=5V)  
250ns Max. (V<sub>CC</sub>=3V)
- 65536×8 bits of mask ROM
- Mask options: chip enable  $\overline{CE}/\overline{OE1}/\overline{OE1}$  and output enable  $\overline{OE}/\overline{OE}/\overline{NC}$
- TTL compatible inputs and outputs
- Tristate outputs
- Fully static operation
- Package type: 28-pin DIP/SOP

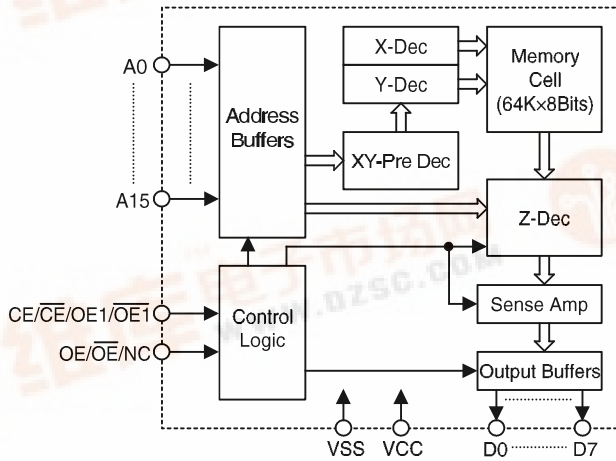
**General Description**

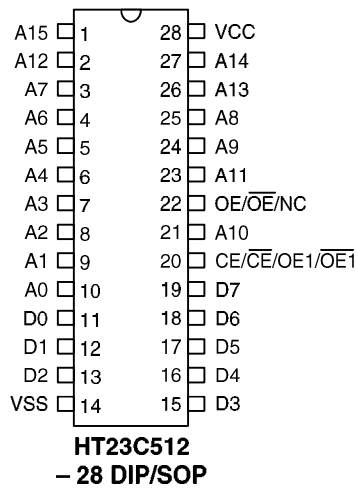
The HT23C512 is a read-only memory with high performance CMOS storage device whose 512K of memory is arranged into 65536 words by 8 bits.

For application flexibility, the chip enable and output enable control pins can be selected as active high or active low. This flexibility not only allows easy interface with most microproces-

sors, but also eliminates bus contention in multiple bus microprocessor systems. An additional feature of the HT23C512 is its ability to enter the standby mode whenever the chip enable ( $\overline{CE}/\overline{OE}$ ) is inactive, thus reducing current consumption to below 30µA. The combination of these functions makes the chip suitable for high density low power memory applications.

**Block Diagram**



**Pin Assignment**

**Pin Description**

Pin Name	I/O	Description
A0~A15	I	Address inputs
D0~D7	O	Data outputs
$\overline{CE}/\overline{OE1}/\overline{OE1}$	I	Chip enable/Output enable input
$\overline{OE}/\overline{OE}/\overline{NC}$	I	Output enable input
VSS	I	Negative power supply
VDD	I	Positive power supply

**Operation Truth Table**

Mode	$\overline{CE}/\overline{CE}$	$\overline{OE}/\overline{OE}$	A0~A15	D0~D7
Read	H/L	H/L	Valid	Data Out
Deselect	H/L	L/H	X	High Z
Standby	L/H	X	X	High Z

Note: H= $V_{IH}$ , L= $V_{IL}$ , X= $V_{IH}$  or  $V_{IL}$

**Absolute Maximum Ratings\***

Supply Voltage .....	-0.3V to 6V	Storage Temperature.....	-50°C to 125°C
Input Voltage.....	-0.3V to $V_{CC}+0.3V$	Operating Temperature.....	-40°C to 85°C

\*Note: These are stress ratings only. Stresses exceeding the range specified under “Absolute Maximum Ratings” may cause substantial damage to the device. Functional operation of this device at other conditions beyond those listed in the specification is not implied and prolonged exposure to extreme conditions may affect device reliability.

**D.C. Characteristics**
**Supply voltage: 2.7V~3.6V**
 **$T_a = -40^\circ\text{C}$  to  $85^\circ\text{C}$** 

Symbol	Parameter	Test Conditions		Min.	Typ.	Max.	Unit
		V <sub>CC</sub>	Conditions				
V <sub>CC</sub>	Operating Voltage	—	—	2.7	—	3.6	V
I <sub>CC</sub>	Operating Current	3V	O/P Unload, f=5MHz	—	—	10	mA
V <sub>IL</sub>	Input Low Voltage	3V	—	V <sub>SS</sub>	—	0.4	V
V <sub>IH</sub>	Input High Voltage	3V	—	2.0	—	V <sub>CC</sub>	V
V <sub>OL</sub>	Output Low Voltage	3V	I <sub>OL</sub> =2.1mA	—	—	0.4	V
V <sub>OH</sub>	Output High Voltage	3V	I <sub>OH</sub> =-0.4mA	2.4	—	V <sub>CC</sub>	V
I <sub>LI</sub>	Input Leakage Current	3V	V <sub>IN</sub> =0 to V <sub>CC</sub>	—	—	10	μA
I <sub>LO</sub>	Output Leakage Current	3V	V <sub>OUT</sub> =0 to V <sub>CC</sub>	—	—	10	μA
I <sub>STB1</sub>	Standby Current	3V	$\overline{CE}=V_{IL}$ $CE=V_{IH}$	—	—	500	μA
I <sub>STB2</sub>	Standby Current	3V	$CE \leq 0.2V$ $\overline{CE} \geq V_{CC}-0.2V$	—	—	10	μA
C <sub>IN</sub>	Input Capacitance (See note)	—	f=1MHz	—	—	10	pF
C <sub>OUT</sub>	Output Capacitance (See note)	—	f=1MHz	—	—	10	pF

Note: These parameters are periodically sampled but not 100% tested.

**Supply voltage: 4.5V~5.5V**
 **$T_a = -40^\circ\text{C}$  to  $85^\circ\text{C}$** 

Symbol	Parameter	Test Conditions		Min.	Typ.	Max.	Unit
		V <sub>CC</sub>	Conditions				
V <sub>CC</sub>	Operating Voltage	—	—	4.5	—	5.5	V
I <sub>CC</sub>	Operating Current	5V	O/P Unload, f=5MHz	—	—	25	mA
V <sub>IL</sub>	Input Low Voltage	5V	—	V <sub>SS</sub>	—	0.8	V

Symbol	Parameter	Test Conditions		Min.	Typ.	Max.	Unit
		V <sub>CC</sub>	Conditions				
V <sub>IH</sub>	Input High Voltage	5V	—	2.2	—	V <sub>CC</sub>	V
V <sub>OL</sub>	Output Low Voltage	5V	I <sub>OL</sub> =3.2mA	—	—	0.4	V
V <sub>OH</sub>	Output High Voltage	5V	I <sub>OH</sub> = -1mA	2.4	—	V <sub>CC</sub>	V
I <sub>LI</sub>	Input Leakage Current	5V	V <sub>IN</sub> =0 to V <sub>CC</sub>	—	—	10	μA
I <sub>LO</sub>	Output Leakage Current	5V	V <sub>OUT</sub> =0 to V <sub>CC</sub>	—	—	10	μA
I <sub>STB1</sub>	Standby Current	5V	$\frac{CE=V_{IL}}{CE=V_{IH}}$	—	—	1.5	mA
I <sub>STB2</sub>	Standby Current	5V	$\frac{CE \leq 0.2V}{CE \geq V_{CC}-0.2V}$	—	—	30	μA
C <sub>IN</sub>	Input Capacitance (See note)	—	f=1MHz	—	—	10	pF
C <sub>OUT</sub>	Output Capacitance (See note)	—	f=1MHz	—	—	10	pF

Note: These parameters are periodically sampled but not 100% tested.

### A.C. Characteristics

T<sub>a</sub>=-40°C to 85°C

Symbol	Parameter	V <sub>CC</sub> =2.7V~3.6V		V <sub>CC</sub> =4.5V~5.5V		Unit
		Min.	Max.	Min.	Max.	
t <sub>CYC</sub>	Cycle Time	250	—	150	—	ns
t <sub>AA</sub>	Address Access Time	—	250	—	150	ns
t <sub>ACE</sub>	Chip Enable Access Time	—	250	—	150	ns
t <sub>AOE</sub>	Output Enable Access Time	—	150	—	80	ns
t <sub>OH</sub>	Output Hold Time	—	—	10	—	ns
t <sub>OD</sub>	Output Disable Time (See Note)	—	—	—	70	ns
t <sub>OE</sub>	Output Enable Time (See Note)	—	—	10	—	ns

Note: These parameters are periodically sampled but not 100% tested.

#### A.C. test conditions

Output load: see figure right

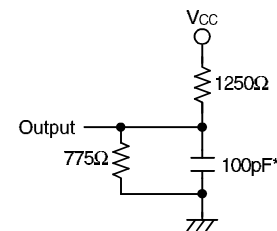
Input rise and fall time: 10ns

Input pulse levels: 0.4V to 2.4V

Input and output timing reference levels:

0.8V and 2.0V (V<sub>CC</sub>=5V)

1.5V (V<sub>CC</sub>=3V)



\* Including scope and jig

Output load circuit

### Functional Description

The HT23C512 has two modes, namely data read mode and standby mode, controlled by  $\overline{CE}/\overline{OE1}/\overline{OE1}$  and  $\overline{OE}/\overline{OE}/\overline{NC}$  inputs.

- Standby mode

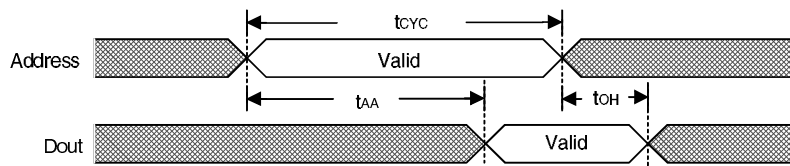
The HT23C512 has lower current consumption, controlled by the chip enable input ( $\overline{CE}/\overline{CE}$ ). When a low/high level is applied to the  $\overline{CE}/\overline{CE}$  input regardless of the output enable ( $\overline{OE}/\overline{OE}/\overline{NC}$ ) states, the chip will enter the standby mode.

- Data read mode

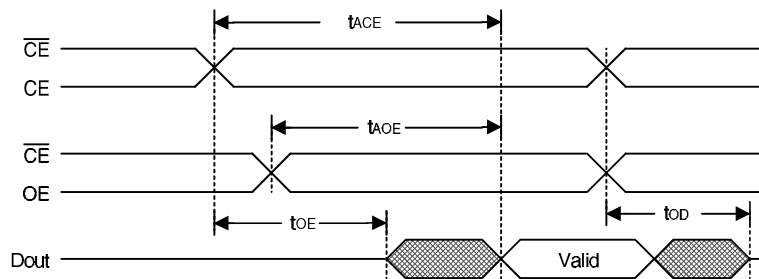
When both the chip enable ( $\overline{CE}/\overline{OE}/\overline{OE1}$ ) and the output enable ( $\overline{OE}/\overline{OE}/\overline{NC}$ ) are active, the chip is in data read mode. Otherwise, active  $\overline{CE}/\overline{CE}$  and inactive  $\overline{OE}/\overline{OE}/\overline{NC}$  result in deselect mode. The output will remain in Hi-Z state.

### Timing Diagrams

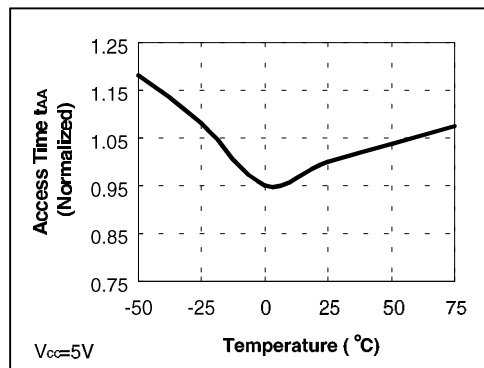
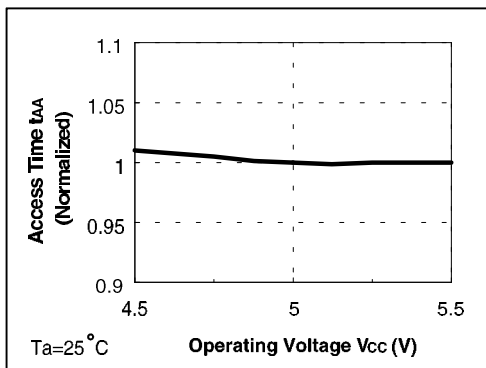
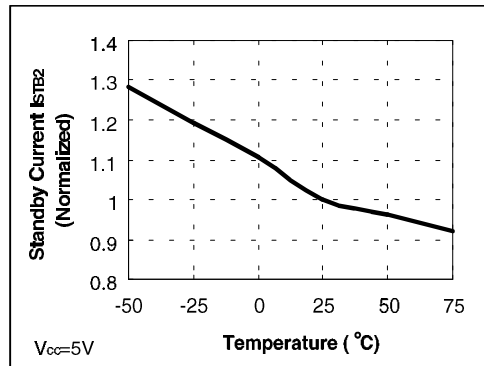
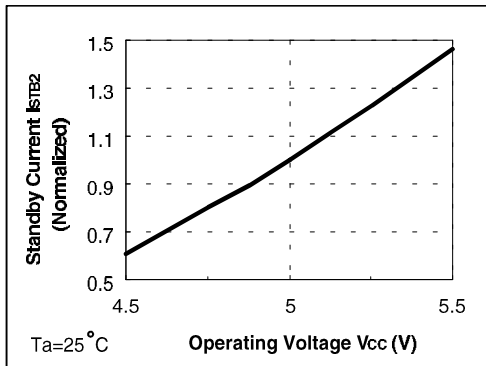
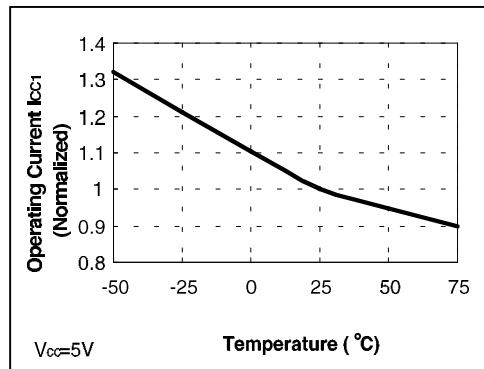
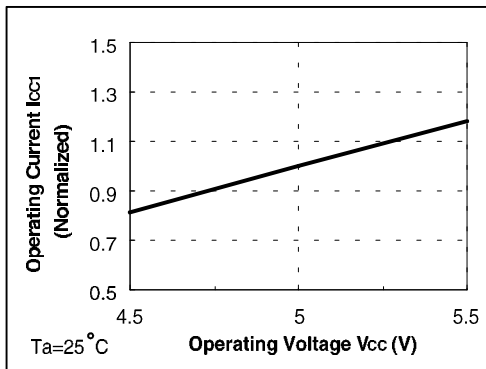
- Propagation delay due to address ( $\overline{CE}/\overline{CE}/\overline{OE1}/\overline{OE1}$  and  $\overline{OE}/\overline{OE}$  are active)

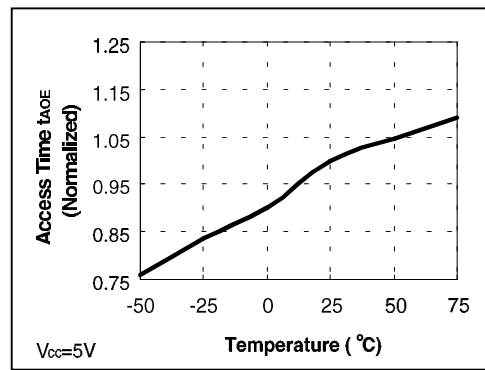
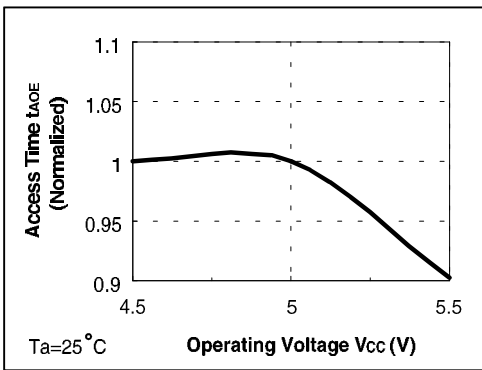
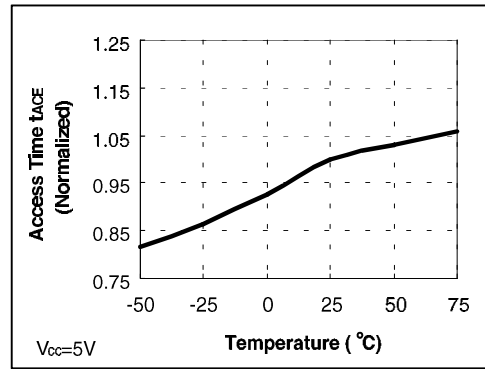
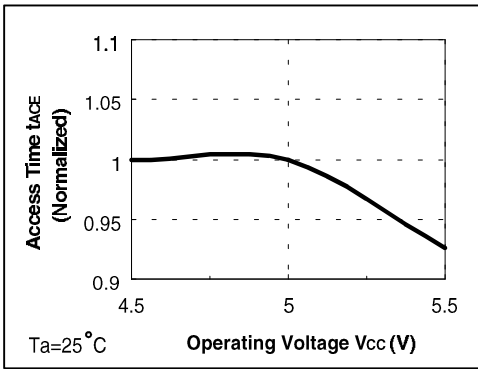


- Propagation delay due to chip enable and output enable (address valid)



Characteristic Curves





**HT23C512 MASK ROM ORDERING SHEET**

Custom: \_\_\_\_\_

Input Medium:

EPROM    DISK    File (Mail Address: romfile@holtek.com.tw)    OTHER \_\_\_\_\_

User No.	Type/Ref. Name	Q'ty	Check Sum	Memory Address	
				Start	End

Control Pin and Package Form Option:

(a) 28 Pin Type Pin 20: \_\_\_\_\_ (1) CE (2)  $\overline{CE}$  (3) OE1 (4)  $\overline{OE1}$

Pin 22: \_\_\_\_\_ (1) OE (2)  $\overline{OE}$  (3) NC

(b) Package Form: \_\_\_\_\_ (1) Chip Form (2) 28 DIP (3) 28 SOP

Companion User No. \_\_\_\_\_

Package Marking : \_\_\_\_\_

Delivery Date : \_\_\_\_\_ Q'ty: \_\_\_\_\_

CUSTOM CONFIRMED BY:

\_\_\_\_\_  
(NAME, DATE, POSITION & CO. CHOP)

HOLTEK CONFIRMED BY:

\_\_\_\_\_  
(SALES)

\_\_\_\_\_  
(SALES MANAGER)